



## Riparian Zones Land Cover/Land Use 2018 (vector), Europe, 6-yearly, Dec. 2021

Riparian zones represent transitional areas occurring between land and freshwater ecosystems, characterised by distinctive hydrology, soil and biotic conditions and strongly influenced by the stream water. They provide a wide range of riparian functions (e.g. chemical filtration, flood control, bank stabilization, aquatic life and riparian wildlife support, etc.) and ecosystem services.

The Riparian Zones products support the objectives of several European legal acts and policy initiatives, such as the EU Biodiversity Strategy to 2020, the Habitats and Birds Directives and the Water Framework Directive.

This metadata refers to the Riparian Zones 2018 Land Cover/Land Use (LC/LU), which LC/LU classification is tailored to the needs of biodiversity monitoring in a variable buffer zone of selected rivers (Strahler levels 2-9 derived from EU-Hydro) for the reference year 2018. LC/LU is extracted from Very High Resolution (VHR) satellite data and other available data in a buffer zone of selected rivers for supporting biodiversity monitoring and mapping and assessment of ecosystems and their services. The class definitions follow the pre-defined nomenclature on the basis of Mapping and Assessment of Ecosystems and their Services (MAES) typology of ecosystems (Level 1 to Level 4) and CORINE Land Cover. The classification provides 55 distinct thematic classes with a Minimum Mapping Unit (MMU) of 0.5 ha and a Minimum Mapping Width (MMW) of 10 m.

The production of the Riparian Zones products was coordinated by the European Environment Agency in the frame of the EU Copernicus programme.

### Simple

Date (Creation)	2021-12-14				
Date (Publication)	2021-12-15				
Edition	01.00				
Citation identifier	copernicus_v_3035_10_m_rz-lclu-2018_p_2017-2018_v01_r00				
Citation identifier	DAT-191-en				
Code	<a href="#">10.2909/2afca4ec-76e2-4155-b4e6-7460f9f6ae01</a>				
Point of contact	Organisation name	Individual name	Electronic mail address	Website	Role
	European Commission			<a href="https://commission.europa.eu">https://commission.europa.eu</a>	Owner
	Copernicus Land Monitoring Service		copernicus@eea.europa.eu	<a href="https://land.copernicus.eu">https://land.copernicus.eu</a>	Custodian
	European Environment Agency		sdi@eea.europa.eu	<a href="http://www.eea.europa.eu">http://www.eea.europa.eu</a>	Publisher
	Copernicus Land Monitoring Service helpdesk		copernicus@eea.europa.eu	<a href="https://land.copernicus.eu/en/contact-service-helpdesk">https://land.copernicus.eu/en/contact-service-helpdesk</a>	Point of contact
Maintenance and update frequency	Continual				
GEMET - INSPIRE themes, version 1.0	<ul style="list-style-type: none"><li>Land cover</li></ul>				
Keywords					
Continents, countries, sea regions of the world.	<ul style="list-style-type: none"><li>United Kingdom</li><li>EEA38 (from 2020)</li></ul>				
Keywords					
	<ul style="list-style-type: none"><li>riparian zone</li></ul>				

GEMET	<ul style="list-style-type: none"> <li>landscape alteration</li> <li>ecosystem services</li> <li>land use</li> <li>land cover</li> <li>hedge</li> <li>tree</li> </ul>
<a href="#">Spatial scope</a>	<ul style="list-style-type: none"> <li><a href="#">European</a></li> </ul>
EEA topics	<ul style="list-style-type: none"> <li>Land use</li> </ul>
EEA Management Plan	<ul style="list-style-type: none"> <li>2017 3.6.2</li> </ul>
Access constraints	Other restrictions
Other constraints	<a href="#">no limitations to public access</a>
Use constraints	Other restrictions
Other constraints	<p>The Copernicus component is governed by Regulation (EU) No 2021/696 of the European Parliament and of the Council of 28 April 2021 establishing the Union Space Programme and the European Union Agency for the Space Programme and repealing Regulations (EU) No 912/2010, (EU) No 1285/2013 and (EU) No 377/2014 and Decision No 541/2014/EU. Within the Copernicus component, a portfolio of land monitoring activities has been delegated by the European Union to the European Environment Agency (EEA) and the DG Joint Research Centre of the European Commission.</p> <p>The Copernicus land monitoring products and services are made available on a principle of full, open and free access, as established by the Commission Delegated Regulation (EU) No 1159/2013 of 12 July 2013.</p> <p>Free, full and open access to the products and services of the Copernicus Land Monitoring Service is made on the conditions that:</p> <ol style="list-style-type: none"> <li>1. When distributing or communicating Copernicus Land Monitoring Service products and services (data, software scripts, web services, user and methodological documentation and similar) to the public, users shall inform the public of the source of these products and services.</li> <li>2. Where the Copernicus Land Monitoring Service products and services have been adapted or modified by the user, the user shall clearly state this.</li> <li>3. Users shall make sure not to convey the impression to the public that the user's activities are officially endorsed by the European Union.</li> </ol>
Aggregate Dataset identifier	393359a7-7ebd-4a52-80ac-1a18d5f3db9c
Association Type	Cross reference
Spatial representation type	Vector
Distance	10 m
Language of dataset	English
Character set	UTF8
Topic category	<ul style="list-style-type: none"> <li>Environment</li> <li>Imagery base maps earth cover</li> </ul>
Begin date	2017-01-01
End date	2018-12-31

	N		S		E		W
--	---	--	---	--	---	--	---



Additional Information	Spatial Resolution information: The Minimum Mapping Width is 10 m		
Coordinate reference system identifier	<a href="#">EPSG:3035</a>		
Distribution format	<ul style="list-style-type: none"> <li>SHP ( 1.1)</li> </ul>		
OnLine resource	<b>Protocol</b> WWW:LINK-1.0-http-link  OGC:WMS  ESRI:REST  WWW:LINK-1.0-http-link	<b>Linkage</b> <a href="https://land.copernicus.eu/local/riparian-zones/riparian-zones-2018">https://land.copernicus.eu/local/riparian-zones/riparian-zones-2018</a> <a href="https://copernicus.discomap.eea.europa.eu/arcgis/services/RiparianZones/RZ_2018/MapServer/WMSServer?request=GetCapabilities&amp;service=WMS">https://copernicus.discomap.eea.europa.eu/arcgis/services/RiparianZones/RZ_2018/MapServer/WMSServer?request=GetCapabilities&amp;service=WMS</a> <a href="https://copernicus.discomap.eea.europa.eu/arcgis/rest/services/RiparianZones/RZ_2018/MapServer">https://copernicus.discomap.eea.europa.eu/arcgis/rest/services/RiparianZones/RZ_2018/MapServer</a> <a href="https://land.copernicus.eu/en/products/riparian-zones/rz-land-cover-land-use-2018#Download">https://land.copernicus.eu/en/products/riparian-zones/rz-land-cover-land-use-2018#Download</a>	<b>Name</b>         Download (requires authentication)
OnLine resource	<b>Protocol</b> DOI	<b>Linkage</b> <a href="https://doi.org/10.2909/2afca4ec-76e2-4155-b4e6-7460f9f6ae01">https://doi.org/10.2909/2afca4ec-76e2-4155-b4e6-7460f9f6ae01</a>	<b>Name</b>
Hierarchy level	Dataset		

## Conformance result

Title	Commission Regulation (EU) No 1089/2010 of 23 November 2010 implementing Directive 2007/2/EC of the European Parliament and of the Council as regards interoperability of spatial data sets and services
Date (Publication)	2010-12-08
Explanation	See the referenced specification

Statement	<p>Computer assisted visual interpretation of the status 2018 data compared to the LC/LU product for reference year 2012. The main dataset for visual image interpretation was the VHR_IMAGE_2018 dataset (Optical VHR coverage of EEA-39 2017-2019), consisting of 2m Pleiades, Kompsat 3/3A, SuperView-1 and 4m SPOT-6/7, TripleSat, PlanetScope and Deimos satellite data. Subsequently, intersection of classification results with additional data (Urban Atlas 2012) was performed.</p> <p>The current LC/LU layer differentiates 55 thematic LC/LU classes covering Strahler levels 2 to 9 for the reference year 2018.</p> <p>Positional Accuracy: less than 5 m (according to geo-location accuracy of satellite imagery delivered by ESA: less than 5m RMSE). Thematic accuracy (area-corrected Overall Accuracy, internal validation): 95.56% (at CODE_4 level) for status layer 2018 and 98.97% (at CODE_1 level) for change layer 2012-2018. Accuracy Assessment approach: Stratified Random Point Sampling with 1669 sampling points for both, 2018 status layer and 2012-2018 change layer. Interpretation of sampling points has been performed on the best available reference data.</p>
-----------	---

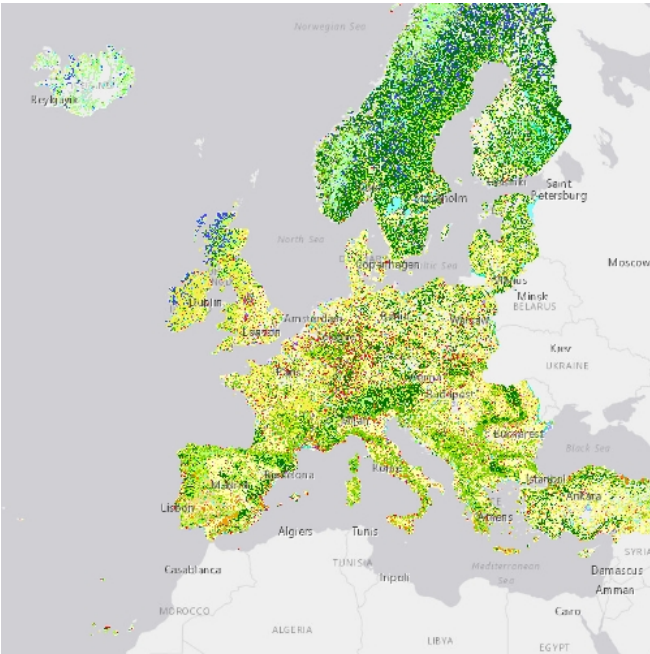
Source

- [Urban Atlas Land Cover/Land Use 2018 \(vector\), Europe, 6-yearly, Jul, 2021](#)
- [Riparian Zones Land Cover/Land Use 2012 \(vector\), Europe, 6-yearly, Dec, 2021](#)

Metadata

File identifier	2afca4ec-76e2-4155-b4e6-7460f9f6ae01 <a href="#">XML</a>		
Metadata language	English		
Character set	UTF8		
Hierarchy level	Dataset		
Date stamp	2023-08-15T14:57:18.867Z		
Metadata standard name	ISO 19115/19139		
Metadata standard version	1.0		
Metadata author	Organisation name	Individual name	Electronic mail addressWebsite Role
	European Environment Agency		sdi@eea.europa.euPoint of contact

Overviews



Provided by

