

EU-Hydro

EU-Hydro is a pan-European level suite of products that provide a photo-interpreted river network, consistent of surface interpretation of water bodies (lakes and wide rivers) and a drainage model (also called Drainage Network), derived from EU-DEM, with catchments and drainage lines and nodes. The coastline, provided for each basin in the EU-Hydro River Network Database, is available as a single dataset merged for all the basins.

EU-Hydro is part of the European Union's Copernicus Land Monitoring Service.

Simple

Date (Publication)	2019-11-19
Citation identifier	copernicus_eu-hydro_s
Citation identifier	DAT-194-en

Point of contact

No information provided.

Continents, countries, sea regions of the world.	<ul style="list-style-type: none"> • United Kingdom • EEA38 (from 2020) • EEA39
EEA Management Plan	<ul style="list-style-type: none"> • 2017 3.6.1
Keywords	
Keywords	
EEA topics	<ul style="list-style-type: none"> • Land use • Water
GEMET	<ul style="list-style-type: none"> • river • environment • ocean • catchment area • land • hydrographic network • drainage system • hydrology • landscape alteration • inland water • canal • drainage • catchment • water body

	<ul style="list-style-type: none"> coastal area coast
GEMET - INSPIRE themes, version 1.0	<ul style="list-style-type: none"> Hydrography Land cover
Spatial scope	<ul style="list-style-type: none"> European
Aggregate Datasetidentifier	393359a7-7ebd-4a52-80ac-1a18d5f3db9c
Association Type	Is composed of
Aggregate Datasetidentifier	9d6c471c-d585-4997-9b73-345c55feb0c2
Association Type	Is composed of
Aggregate Datasetidentifier	2738bb1f-6b50-47e9-aba9-50157cb7228f
Association Type	Is composed of
Aggregate Datasetidentifier	da419ff3-5ae7-46a0-b0c0-ebf2d487f964
Association Type	Is composed of
Aggregate Datasetidentifier	f1c6c2e1-d3f5-4326-8ead-0dad7f354eb2
Association Type	Is composed of
Aggregate Datasetidentifier	ffc1c5f3-5fa3-4af0-b40f-2061c3e8b681
Association Type	Is composed of
Aggregate Datasetidentifier	4c0121bd-16db-4a3b-b905-cab557f2acd1
Association Type	Is composed of
Aggregate Datasetidentifier	801dc3ca-339d-4e27-9a18-08b6934efe34
Association Type	Is composed of
Aggregate Datasetidentifier	a4613aeb-ec3e-49c5-adca-69cd1c9204a3
Association Type	Is composed of
Spatial representation type	Vector
Denominator	50000
Language of dataset	English
Character set	UTF8
Topic category	<ul style="list-style-type: none"> Environment Imagery base maps earth cover

N

S

E

W

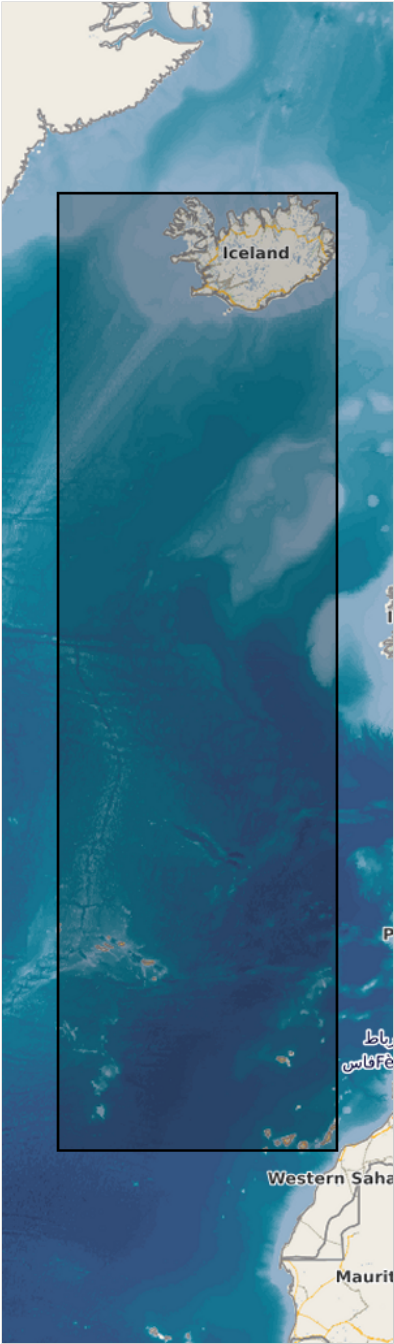


N

S

E

W



N

S

E

W



	N
--	---

	S
--	---

	E
--	---

	W
--	---

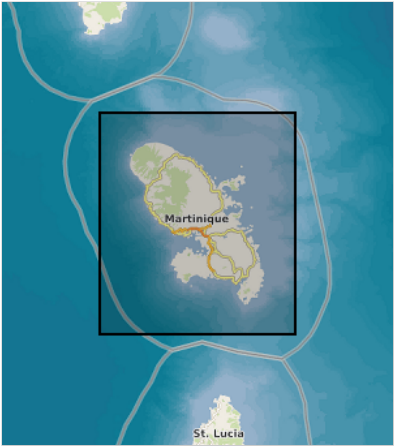


	N
--	---

	S
--	---

	E
--	---

	W
--	---



	N
--	---

	S
--	---

	E
--	---

	W
--	---



	N		S		E		W
--	---	--	---	--	---	--	---



Begin date	2006-01-01
End date	2012-12-31

Metadata

File identifier	2e782ca5-c7b2-4b48-8928-03031b642176 XML
Metadata language	English
Character set	UTF8
Hierarchy level	Series
Date stamp	2024-04-24T12:39:24.159006Z
Metadata standard name	ISO 19115:2003/19139
Metadata standard version	1.0

Metadata author	Organisation name	Individual name	Electronic mail address	Website Role
	European Environment Agency		sdi@eea.europa.eu	Point of contact

Overviews



Provided by

