



## EU-DEM (raster) - version 1.1, Apr. 2016

The EU-DEM v1.1 is a resulting dataset of the EU-DEM v1.0 upgrade which enhances the correction of geo-positioning issues, reducing the number of artefacts, improving the vertical accuracy of EU-DEM using ICESat as reference and ensuring consistency with EU-Hydro public beta.

EU-DEM v1.1 is available in GeoTIFF 32 bits format. It is a contiguous dataset divided into 100x100 km tiles, resulting in a total of 1992 tiles of 4000x4000 pixel at 25m resolution with vertical accuracy: +/- 7 meters RMSE. The tiles have been grouped in big regions:

- EUDEM2\_ASIA (Türkiye)
- EUDEM2\_ATLAN (Hondo and Fr\_Islands)
- EUDEM2\_BRITAIN (Thames, Shannon and Tweed)
- EUDEM2\_EUROPE\_1 (Duero, Ebro, Tajo, Guadalquivir and Jucar)
- EUDEM2\_EUROPE\_2 (Tirso, Mesima, Tevere and Po)
- EUDEM2\_EUROPE\_3 (Garonne, Rhone, Loire, Seine and western Rhine)
- EUDEM2\_EUROPE\_4 (Danube)
- EUDEM2\_EUROPE\_5 (Skjern, Nemunas, Vistula, Oder, Elbe and Eastern Rhine)
- EUDEM2\_EUROPE\_6 (Bulgaria and Pinios)
- EUDEM2\_ICELAND (Iceland)
- EUDEM2\_SCAND (Vorma, Gota, Angerman, Tana, Kemi and Neva)
- EUDEM2\_SOUTH\_AMERICA (Fr\_Guiana)

EU-DEM v1.1 upgrade was coordinated by the European Environment Agency (EEA) in the frame of the EU Copernicus programme.

## Simple

<b>Date (Creation)</b>	2016-04-20				
<b>Date (Publication)</b>	2016-04-20				
<b>Date (Revision)</b>	2016-04-20				
<b>Edition</b>	01.01				
<b>Citation identifier</b>	copernicus_r_3035_25_m_eu-dem_p_2011_v01_r01				
<b>Citation identifier</b>	DAT-193-en				
<b>Status</b>	Obsolete				
<b>Point of contact</b>	<b>Organisation name</b>	<b>Individual name</b>	<b>Electronic mail address</b>	<b>Website</b>	<b>Role</b>
	European Commission			<a href="https://commission.europa.eu">https://commission.europa.eu</a>	Owner
	Copernicus Land Monitoring Service		copernicus@eea.europa.eu	<a href="https://land.copernicus.eu">https://land.copernicus.eu</a>	Custodian
	European Environment Agency		sdi@eea.europa.eu	<a href="http://www.eea.europa.eu">http://www.eea.europa.eu</a>	Publisher
	Copernicus Land Monitoring Service helpdesk		copernicus@eea.europa.eu	<a href="https://land.copernicus.eu/en/contact-service-helpdesk">https://land.copernicus.eu/en/contact-service-helpdesk</a>	Point of contact
<b>Maintenance and update frequency</b>	Continual				
	<ul style="list-style-type: none"><li>• Elevation</li></ul>				

<b>GEMET - INSPIRE themes, version 1.0</b>	
<b>Keywords</b>	<ul style="list-style-type: none"> <li>• EEA39</li> </ul>
<b>Continents, countries, sea regions of the world.</b>	
<b>Keywords</b>	<ul style="list-style-type: none"> <li>• land use</li> </ul>
<b>GEMET</b>	<ul style="list-style-type: none"> <li>• landscape alteration</li> <li>• digital land model</li> <li>• land cover</li> </ul>
<b><a href="#">Spatial scope</a></b>	<ul style="list-style-type: none"> <li>• <a href="#">European</a></li> </ul>
<b>EEA Management Plan</b>	<ul style="list-style-type: none"> <li>• 2017 3.6.1</li> </ul>
<b>EEA topics</b>	<ul style="list-style-type: none"> <li>• Land use</li> </ul>
<b>Access constraints</b>	Other restrictions
<b>Other constraints</b>	<a href="#">no limitations to public access</a>
<b>Use constraints</b>	Other restrictions
<b>Other constraints</b>	<p>The Copernicus component is governed by Regulation (EU) No 2021/696 of the European Parliament and of the Council of 28 April 2021 establishing the Union Space Programme and the European Union Agency for the Space Programme and repealing Regulations (EU) No 912/2010, (EU) No 1285/2013 and (EU) No 377/2014 and Decision No 541/2014/EU. Within the Copernicus component, a portfolio of land monitoring activities has been delegated by the European Union to the European Environment Agency (EEA) and the DG Joint Research Centre of the European Commission.</p> <p>The Copernicus land monitoring products and services are made available on a principle of full, open and free access, as established by the Commission Delegated Regulation (EU) No 1159/2013 of 12 July 2013.</p> <p>Free, full and open access to the products and services of the Copernicus Land Monitoring Service is made on the conditions that:</p> <ol style="list-style-type: none"> <li>1. When distributing or communicating Copernicus Land Monitoring Service products and services (data, software scripts, web services, user and methodological documentation and similar) to the public, users shall inform the public of the source of these products and services.</li> <li>2. Where the Copernicus Land Monitoring Service products and services have been adapted or modified by the user, the user shall clearly state this.</li> <li>3. Users shall make sure not to convey the impression to the public that the user's activities are officially endorsed by the European Union.</li> </ol>
<b>Aggregate Dataset identifier</b>	19cff95e-61ac-45ed-8ee3-c43220d709cf
<b>Association Type</b>	revision of
<b>Spatial representation type</b>	Grid
<b>Distance</b>	25 m
<b>Language of dataset</b>	English
<b>Character set</b>	UTF8
<b>Topic category</b>	<ul style="list-style-type: none"> <li>• Environment</li> <li>• Imagery base maps earth cover</li> </ul>
<b>Begin date</b>	2011-01-01

End date

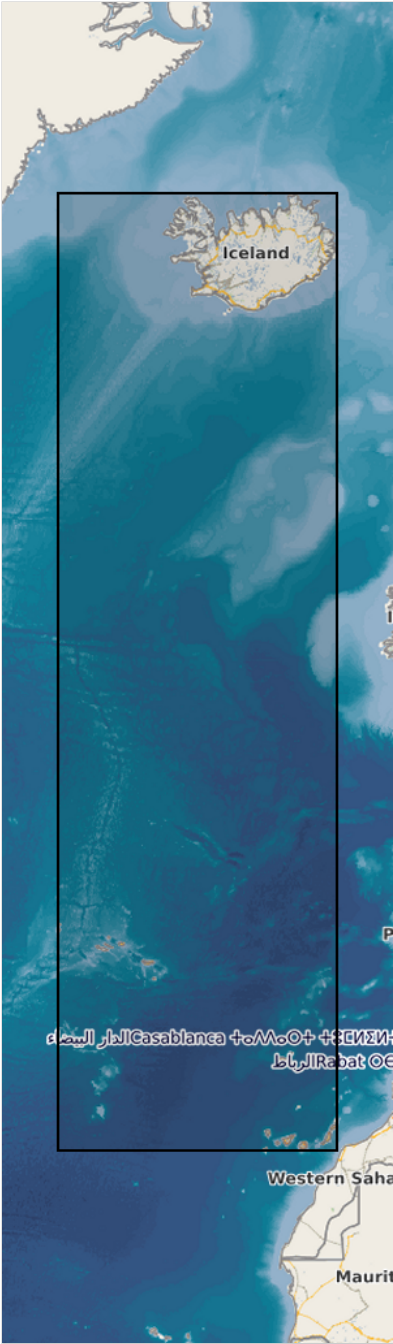
2011-12-31

N

S

E

W



	N		S		E		W
--	---	--	---	--	---	--	---



Coordinate reference system identifier	<a href="#">EPSG:3035</a>
Distribution format	<ul style="list-style-type: none"> <li>GeoTIFF ( 1.0)</li> </ul>

### Distributor

Distributor contact	Organisation name	Individual name	Electronic mail address	Website Role
Ordering instructions	<p>This dataset is no longer accessible from the website of the Copernicus Land Monitoring Service.</p> <p>You can request access to this dataset by contacting the service desk of the Copernicus Land Monitoring Service at <a href="mailto:copernicus@eea.europa.eu">copernicus@eea.europa.eu</a>.</p>			
Hierarchy level	Dataset			

### Conformance result

Title	Commission Regulation (EU) No 1089/2010 of 23 November 2010 implementing Directive 2007/2/EC of the European Parliament and of the Council as regards interoperability of spatial data sets and services
Date (Publication)	2010-12-08
Explanation	See the referenced specification

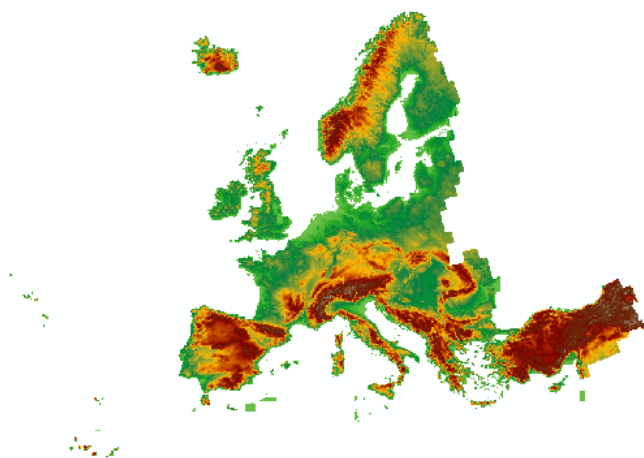
Statement	<ul style="list-style-type: none"> <li>•Correction of geo-positioning issues in EU-DEM v1.0 as reference also using SPOT 2011 imagery</li> <li>•Bias adjustment with ICESat points</li> <li>•Screening and removal of artefacts in the EU-DEM v1.0, including the presence of blunders (i.e. negative or positive anomalies)</li> <li>•Ensuring consistency with EU-Hydro to produce a better river network topology:               <ul style="list-style-type: none"> <li>--Consistency of the coastline with the EU-HYDRO coastline, including the removal of DEM values outside the EU-HYDRO coastline</li> <li>--Use of the EU-HYDRO coastline to smooth the gradient to the coast in flat regions</li> <li>--Burning of EU-HYDRO water bodies to set EU-DEM to the minimum height inside the water body, smoothing the boundaries</li> </ul> </li> </ul>
-----------	---

### Metadata

File identifier	3473589f-0854-4601-919e-2e7dd172ff50 <a href="#">XML</a>
-----------------	--

Metadata language	English		
Character set	UTF8		
Hierarchy level	Dataset		
Date stamp	2024-01-09T10:31:14.52Z		
Metadata standard name	ISO 19115/19139		
Metadata standard version	1.0		
Metadata author	Organisation name	Individual name	Electronic mail addressWebsite Role
	European Environment Agency		sdi@eea.europa.euPoint of contact

Overviews



Provided by

