

Elevation map of Europe (1km hillshade)

The map is made using the global digital elevation model (DEM) derived from GTOPO30. Note that the values in the file are not the original elevation data. The data has been processed to create an image for presentation purposes stretching a predefined colour template over the derived values.

Simple

Date (Creation)	2016-07-07T13:25:07+00:00		
Date (Publication)	2016-07-07T13:25:07+00:00		
Edition	01.00		
Citation identifier	http://www.eea.europa.eu/data-and-maps/data/digital-elevation-model-of-europe		
Citation identifier	DAT-36-en		
Citation identifier	digital-elevation-model-of-europe		
Citation identifier	eea_r_4326_1_1km_hillshade-elevation-map-europe_p_2004_v01_r00		
Point of contact	Organisation name	Individual name	Electronic mail address Website Role
	European Environment Agency		sdi@eea.europa.eu Point of contact
Maintenance and update frequency	Not planned		
EEA Management Plan	<ul style="list-style-type: none"> 2004 0.0.0 		
Keywords			
Keywords			
GEMET	<ul style="list-style-type: none"> altitude 		
Continents, countries, sea regions of the world.	<ul style="list-style-type: none"> Sweden Ukraine Portugal Ireland Finland Cyprus Hungary Netherlands Georgia Switzerland Albania Bulgaria Armenia 		

	<ul style="list-style-type: none"> • Liechtenstein • Croatia • Latvia • Belgium • Germany • Montenegro • Bosnia and Herzegovina • Spain • Slovakia • Türkiye • Russian Federation (European part) • Romania • Czechia • Moldova • Serbia • Denmark • Greece • Estonia • Austria • France • Italy • Lithuania • Belarus • Iceland • Malta • Poland • Luxembourg • United Kingdom • Norway • Slovenia
GEMET - INSPIRE themes, version 1.0	<ul style="list-style-type: none"> • Elevation
Keywords	
Access constraints	Other restrictions
Other constraints	No limitations to public access
Use constraints	Other restrictions
Other constraints	EEA standard re-use policy: unless otherwise indicated, re-use of content on the EEA website for commercial or non-commercial purposes is permitted free of charge, provided that the source is acknowledged (http://www.eea.europa.eu/legal/copyright). Copyright holder: European Environment Agency (EEA).
Spatial representation type	Grid
Distance	1 1 km

Language of dataset	English
Topic category	<ul style="list-style-type: none">• Environment
Begin date	2004-01-01
End date	2004-12-31



Additional Information	Geographical coverage: Russian Federation covered until Ural Mountains.1000 m		
Coordinate reference system identifier	EPSG:4326		
Distribution format	<ul style="list-style-type: none"> GeoTIFF () 		
OnLine resource	Protocol EEA:FOLDERPATH WWW:URL	Linkage https://sdi.eea.europa.eu/webdav/datastore/public/eea_r_4326_1_km_hillshade-elevation-map-europe_p_2004_v01_r00/ https://sdi.eea.europa.eu/data/4808a4a8-b4a6-4e5f-9de9-ce62a603f707	Name Direct download
Hierarchy level	Dataset		

Conformance result

Date (Publication)	2010-12-08
Explanation	See the referenced specification

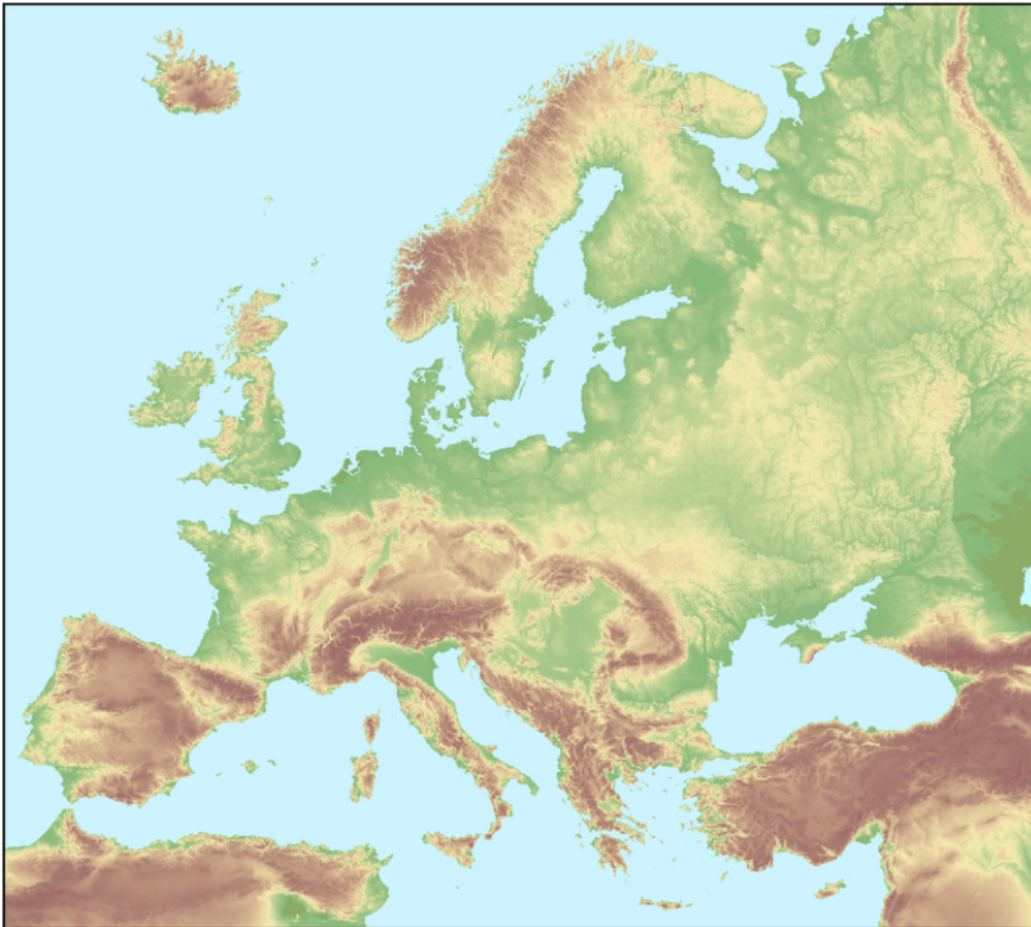
Statement	<p>The data set was compiled by EEA and is derived from the GTOPO30 dataset (http://edcdaac.usgs.gov/gtopo30/gtopo30.html). The DTM was converted to raster (georeferenced tiff) using Arcview and Grid Pig extension. The Caspian Sea border, the Africa depression and some areas from the Netherlands, all under sea level were corrected. The DTM was hillshaded using ArcMap and Spatial Analyst using following parametres: Azimuth: 315, Altitude: 45, Model shadows: Yes, Z factor: 10, Cell size: 1000 m.</p> <p>GTOPO30, available from U.S. Geological Survey, EROS Data Center, Sioux Falls, South Dakota. GTOPO30 is a global digital elevation model (DEM) with a horizontal grid spacing of 30 arc seconds (approximately 1 kilometer). GTOPO30 was derived from several raster and vector sources of topographic information. GTOPO30, completed in late 1996, was developed over a three year period through a collaborative effort led by staff at the U.S. Geological Survey's EROS Data Center (EDC).</p> <p>The following organizations participated by contributing funding or source data: the National Aeronautics and Space Administration (NASA), the United Nations Environment Programme/Global Resource Information Database (UNEP/GRID), the U.S. Agency for International Development (USAID), the Instituto Nacional de Estadística Geográfica e Informática (INEGI) of Mexico, the Geographical Survey Institute (GSI) of Japan, Manaaki Whenua Landcare Research of New Zealand, and the Scientific Committee on Antarctic Research (SCAR).</p>
------------------	--

Metadata

File identifier	4808a4a8-b4a6-4e5f-9de9-ce62a603f707 XML
Metadata language	English
Character set	UTF8
Hierarchy level	Dataset
Date stamp	2023-02-22T09:36:51.693Z

Metadata standard name	ISO 19115:2003/19139		
Metadata standard version	1.0		
Metadata author	Organisation name	Individual name	Electronic mail address
	European Environment Agency		sdi@eea.europa.eu
			Website Role
			Point of contact

Overviews



Provided by

