

## Global Administrative Unit Layers (GAUL), first level (level 1) for reference year 2008 - version 2009, Dec. 2008

The Global Administrative Unit Layers (GAUL) is an initiative implemented by FAO within the EC-FAO Food Security Programme funded by the European Commission ( [http://www.foodsecinfoaction.org/News/news\\_06\\_06.htm](http://www.foodsecinfoaction.org/News/news_06_06.htm) ). The GAUL aims at compiling and disseminating the most reliable spatial information on administrative units for all the countries in the world, providing a contribution to the standardization of the spatial dataset representing administrative units.

The GAUL always maintains global layers with a unified coding system at country, first (e.g. regions) and second administrative levels (e.g. districts). In addition, when data is available, it provides layers on a country by country basis down to third, fourth and lower levels.

The GAUL is released once a year and the target beneficiary of the GAUL data is the UN community, the Universities and other authorized international and national institutions/agencies. Data might not be officially validated by authoritative national sources and can not be distributed to the general public. A disclaimer should always accompany any use of the GAUL data.

About 21 countries have been updated respect to the previous release (see countries\_updated.dbf).

The GAUL keeps track of administrative units that has been changed, added or dismissed in the past for political causes. Changes implemented in different years are recorded in the GAUL on different layers. For this reason the GAUL product is not a single layer but a group of layers, named "GAUL Set" (see Gaul\_Set.pdf).

The original dataset containing Level 0 administrative units has been combined by EEA with some attributes data provided within GAUL in a separate file. No data from outside GAUL have been used and it is possible to reconstruct the original dataset by removing the extra attributes added.

### Simple

<b>Date (Creation)</b>	2008-12-10
<b>Edition</b>	2009
<b>Citation identifier</b>	fao_v_4326_1_mio_gaul1_2008_rev2009

### Point of contact

No information provided.

<b>Maintenance and update frequency</b>	Annually
<b>GEMET - INSPIRE themes, version 1.0</b>	<ul style="list-style-type: none"> <li>Administrative units</li> </ul>
<b>Keywords</b>	
<b>Keywords</b>	
<b><u>Spatial scope</u></b>	<ul style="list-style-type: none"> <li><a href="#">Global</a></li> </ul>
<b>GEMET</b>	<ul style="list-style-type: none"> <li>administrative boundary</li> </ul>
<b>Use limitation</b>	License
<b>Access constraints</b>	Copyright
<b>Access constraints</b>	Other restrictions
<b>Use constraints</b>	License
<b>Other constraints</b>	<p>DEFAULT STATEMENT from FAO</p> <p>The Global Administrative Unit Layers (GAUL) provides the most reliable spatial information on administrative units for all countries in the world. The GAUL dataset is for the benefit of the United Nations and other authorized international and national institutions /agencies. The Food and Agriculture Organization of the United Nations (FAO) hereby grants you a licence to use, download and print the materials contained in the GAUL dataset solely for your own non-commercial purposes and in accordance with the conditions listed below. Copyrighted data made available to you through the GAUL dataset is subject to the conditions specified in the metadata. The</p>

	<p>licencee will at all times use due diligence to safeguard and protect all such confidential and proprietary information pertaining to the Licensed Data. Except as may otherwise be expressly permitted by applicable law, all redistribution to non-authorized users or commercial exploitation of any material contained in the GAUL dataset is strictly prohibited without the prior written consent of FAO. Any request for permission to reproduce or otherwise use any material contained in or otherwise made available to you through the GAUL dataset other than as provided for herein, should be directed to FAO. The full GAUL Data License document is available for downloading.</p> <p>+++++</p> <p>It has been agreed between EEA (HP) and FAO that EEA may use GAUL vector data and publish derived products, as defined in the license agreement. Published derived products will contain an appropriate attribution statement: "derived from the Global Administrative Unit Layers (GAUL) dataset, implemented by FAO."</p>
Spatial representation type	Vector
Denominator	1000000
Language of dataset	English
Character set	UTF8
Topic category	<ul style="list-style-type: none"><li>Boundaries</li></ul>



Begin date	2008-01-01
End date	2008-12-31
Coordinate reference system identifier	<a href="#">EPSG:4326</a>
Distribution format	<ul style="list-style-type: none"><li>Postgis ( )</li></ul>

OnLine resource

No information provided.

OnLine resource

No information provided.

Hierarchy level	Dataset
-----------------	---------

Conformance result

Date (Publication)	2010-12-08
Explanation	See the referenced specification

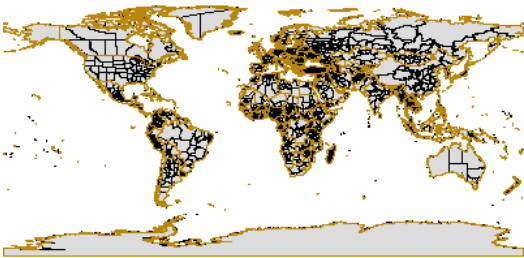
Statement	<p>The overall methodology consists in</p> <ul style="list-style-type: none"><li>a) collecting the best available data from most reliable sources,</li><li>b) establishing validation periods of the geographic features (when possible),</li><li>c) adding selected data to the global layer based on the last country boundaries map provided by the UN Cartographic Unit (UNCS),</li><li>d) generating codes using the GAUL Coding System and e) distribute data to the users (see GAUL Doc01 Ver17.pdf)</li></ul> <p>Because the GAUL works at global level, controversial boundaries can not be ignored. The approach of the GAUL is to maintain disputed areas in such a way to preserve national integrity for all disputing countries (see GAUL Doc01 Ver17.pdf and disputed_areas.dbf).</p> <p>The coastal line of the GAUL is mostly compliant with the coast of the International Boundary map delivered by UNCS except for some countries (e.g. Viet Nam, India, Bangaldesh, etc.) where it has been updated according to the satellite images (e.g. Landsat ETM). For the next releases of the GAUL, the updating process of the coast-line will go on, country by country, through a comparison with the satellite images.</p>
-----------	--

Metadata

File identifier	5f9a77a6-8f6f-4551-a158-82e138336a6f <a href="#">XML</a>
Metadata language	English

Character set	UTF8		
Hierarchy level	Dataset		
Date stamp	2021-09-21T12:34:39.323Z		
Metadata standard name	ISO 19115/19139		
Metadata standard version	1.0		
Metadata author	<div><div>Organisation name</div><div>European Environment Agency</div></div>	<div><div>Individual name</div></div>	<div><div>Electronic mail address</div><div>sdi@eea.europa.eu</div></div> <div><div>Website Role</div><div>Point of contact</div></div>

Overviews



Provided by

