



## N2K 2018 (vector), Europe, 6-yearly, Jul. 2021

This metadata refers to CLMS N2K 2018 product, the Copernicus Land Cover/Land Use (LC/LU) status map, with 2018 as reference year for the classification, tailored to the needs of biodiversity monitoring in selected Natura2000 sites: 4790 sites of natural and semi-natural grassland formations listed in Annex I of the Habitats Directive, including a 2 km buffer zone surrounding the sites and covering an area of 631.820 km<sup>2</sup> across Europe (EU27, the United Kingdom and Switzerland). The product includes three Emerald sites in Switzerland. LC/LU has been extracted from VHR satellite data and other available data.

The production of N2K updates was coordinated by the European Environment Agency (EEA) in the frame of the EU Copernicus programme.

### Simple

<b>Date (Creation)</b>	2021-07-16				
<b>Date (Publication)</b>	2021-07-16				
<b>Edition</b>	01.00				
<b>Citation identifier</b>	copernicus_v_3035_10_m_n2k-2018_p_2017-2019_v01_r00				
<b>Citation identifier</b>	DAT-192-en				
<b>Code</b>	<a href="https://doi.org/10.2909/7d3b6dde-5884-45ee-82b2-611e7b2efd1f">10.2909/7d3b6dde-5884-45ee-82b2-611e7b2efd1f</a>				
<b>Point of contact</b>	<b>Organisation name</b>	<b>Individual name</b>	<b>Electronic mail address</b>	<b>Website</b>	<b>Role</b>
	European Commission			<a href="https://commission.europa.eu">https://commission.europa.eu</a>	Owner
	Copernicus Land Monitoring Service		copernicus@eea.europa.eu	<a href="https://land.copernicus.eu">https://land.copernicus.eu</a>	Custodian
	European Environment Agency		sdi@eea.europa.eu	<a href="http://www.eea.europa.eu">http://www.eea.europa.eu</a>	Publisher
	Copernicus Land Monitoring Service helpdesk		copernicus@eea.europa.eu	<a href="https://land.copernicus.eu/en/contact-service-helpdesk">https://land.copernicus.eu/en/contact-service-helpdesk</a>	Point of contact
<b>Maintenance and update frequency</b>	Continual				
<b>GEMET - INSPIRE themes, version 1.0</b>	<ul style="list-style-type: none"><li>Land cover</li><li>Protected sites</li></ul>				
<b>Keywords</b>					
<b>Continents, countries, sea regions of the world.</b>	<ul style="list-style-type: none"><li>Switzerland</li><li>United Kingdom</li><li>EU27 (from 2020)</li></ul>				
<b>Keywords</b>					
<b>GEMET</b>	<ul style="list-style-type: none"><li>protected area</li><li>natural areas protection</li><li>habitat</li><li>natural area</li><li>landscape alteration</li></ul>				

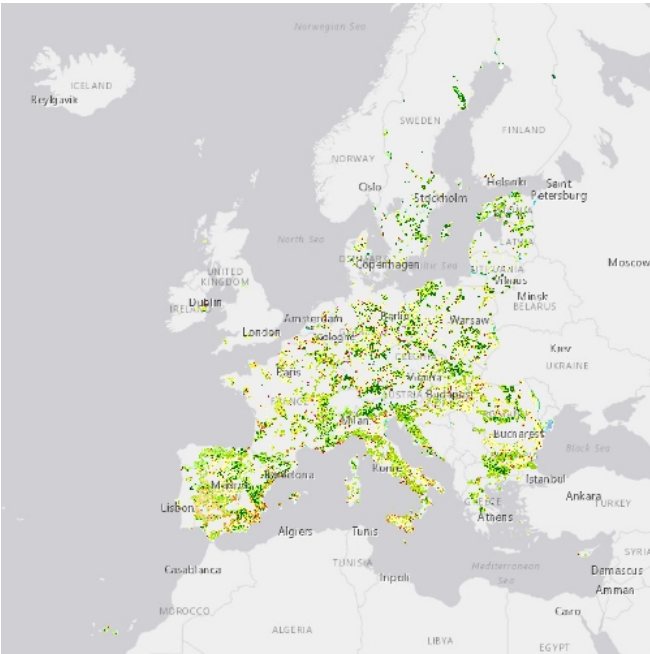
	<ul style="list-style-type: none"> <li>• land use</li> <li>• species</li> </ul>
<b>Spatial scope</b>	<ul style="list-style-type: none"> <li>• <a href="#">European</a></li> </ul>
<b>EEA topics</b>	<ul style="list-style-type: none"> <li>• Biodiversity</li> <li>• Land use</li> </ul>
<b>EEA Management Plan</b>	<ul style="list-style-type: none"> <li>• 2017 3.6.2</li> </ul>
<b>Access constraints</b>	Other restrictions
<b>Other constraints</b>	<a href="#">no limitations to public access</a>
<b>Use constraints</b>	Other restrictions
<b>Other constraints</b>	<p>The Copernicus component is governed by Regulation (EU) No 2021/696 of the European Parliament and of the Council of 28 April 2021 establishing the Union Space Programme and the European Union Agency for the Space Programme and repealing Regulations (EU) No 912/2010, (EU) No 1285/2013 and (EU) No 377/2014 and Decision No 541/2014/EU. Within the Copernicus component, a portfolio of land monitoring activities has been delegated by the European Union to the European Environment Agency (EEA) and the DG Joint Research Centre of the European Commission.</p> <p>The Copernicus land monitoring products and services are made available on a principle of full, open and free access, as established by the Commission Delegated Regulation (EU) No 1159/2013 of 12 July 2013.</p> <p>Free, full and open access to the products and services of the Copernicus Land Monitoring Service is made on the conditions that:</p> <ol style="list-style-type: none"> <li>1. When distributing or communicating Copernicus Land Monitoring Service products and services (data, software scripts, web services, user and methodological documentation and similar) to the public, users shall inform the public of the source of these products and services.</li> <li>2. Where the Copernicus Land Monitoring Service products and services have been adapted or modified by the user, the user shall clearly state this.</li> <li>3. Users shall make sure not to convey the impression to the public that the user's activities are officially endorsed by the European Union.</li> </ol>
<b>Spatial representation type</b>	Vector
<b>Distance</b>	10 m
<b>Language of dataset</b>	English
<b>Character set</b>	UTF8
<b>Topic category</b>	<ul style="list-style-type: none"> <li>• Environment</li> <li>• Imagery base maps earth cover</li> </ul>
<b>Begin date</b>	2017-01-01
<b>End date</b>	2019-12-31



Metadata

File identifier	7d3b6dde-5884-45ee-82b2-611e7b2efd1f <a href="#">XML</a>		
Metadata language	English		
Character set	UTF8		
Hierarchy level	Dataset		
Date stamp	2024-02-06T16:45:22.692Z		
Metadata standard name	ISO 19115/19139		
Metadata standard version	1.0		
Metadata author	Organisation name	Individual name	Electronic mail addressWebsite Role
	European Environment Agency		sdi@eea.europa.euPoint of contact

Overviews



Provided by

