

Medium Resolution Vegetation Phenology and Productivity: Small integral (raster 500m), Oct. 2022

The small integral (SINT), one of the Vegetation Phenology and Productivity (VPP) parameters, is a product of the pan-European Medium Resolution Vegetation Phenology and Productivity (MR-VPP) component of the Copernicus Land Monitoring Service (CLMS).

The small integral (SINT) expresses the difference between the function describing the season and the base level from season start to season end.

The Plant Phenology Index (PPI) is a physically based vegetation index, developed for improving the monitoring of the vegetation growth cycle. The PPI index values, with 5-day satellite revisit cycle, are first used in a function fitting to derive the PPI Seasonal Trajectories. From these Seasonal Trajectories, a suite of 13 Vegetation Phenology and Productivity (VPP) parameters are then computed and provided, for up to two seasons each year. The small integral for the fitted function during the season is one of the 13 parameters. The full list is available in the Product User Manual: https://land.copernicus.eu/user-corner/technical-library/clms_mrvpp_pum_d1-0.pdf

The small integral time series dataset is made available as raster files with 500x 500m resolution, in ETRS89-LAEA projection corresponding to the MCD43 tiling grid, for those tiles that cover the EEA38 countries and the United Kingdom and for two seasons in each year from 2000 onwards. It is updated in the first quarter of each year.

The full on-line access to open and free data for this resource will be made available in the second half of 2024. Until then the data will be made available 'on-demand' by filling in the form at: <https://land.copernicus.eu/contact-form>

Simple

Date (Creation)	2022-06-08		
Date (Publication)	2022-10-10		
Edition	01.00		
Citation identifier	copernicus_r_3035_500_m_mrvpp-sint_p_2000-now_v01_r00		
Point of contact	Organisation name	Individual name	Electronic mail address Website Role
	European Environment Agency		copernicus@eea.europa.eu https://land.copernicus.eu Distributor
	European Environment Agency		copernicus@eea.europa.eu https://land.copernicus.eu Custodian
	European Environment Agency		copernicus@eea.europa.eu https://land.copernicus.eu Point of contact

Point of contact

No information provided.

Maintenance and update frequency	Annually
GEMET - INSPIRE themes, version 1.0	<ul style="list-style-type: none"> • Orthoimagery • Habitats and biotopes • Environmental monitoring facilities
Keywords	
Continents, countries, sea regions of the world.	<ul style="list-style-type: none"> • EEA38 (from 2020) • United Kingdom
Keywords	

GEMET	<ul style="list-style-type: none"> • productivity • land • remote sensing • plant production • index • vegetation • plant ecology
Spatial scope	<ul style="list-style-type: none"> • European
Temporal resolution	<ul style="list-style-type: none"> • Annually
EEA topics	<ul style="list-style-type: none"> • Agriculture and food • Land use • Forests and forestry
Access constraints	Other restrictions
Other constraints	no limitations to public access
Use constraints	Other restrictions
Other constraints	<p>Access to data is based on a principle of full, open and free access as established by the Copernicus data and information policy Regulation (EU) No 1159/2013 of 12 July 2013. This regulation establishes registration and licensing conditions for GMES/Copernicus users.</p> <p>Free, full and open access to this data set is made on the conditions that:</p> <ol style="list-style-type: none"> 1. When distributing or communicating Copernicus dedicated data and Copernicus service information to the public, users shall inform the public of the source of that data and information. 2. Users shall make sure not to convey the impression to the public that the user's activities are officially endorsed by the Union. 3. Where that data or information has been adapted or modified, the user shall clearly state this. 4. The data remain the sole property of the European Union. Any information and data produced in the framework of the action shall be the sole property of the European Union. Any communication and publication by the beneficiary shall acknowledge that the data were produced "with funding by the European Union".
Spatial representation type	Grid
Distance	500 500 m
Language of dataset	English
Character set	UTF8
Topic category	<ul style="list-style-type: none"> • Environment • Imagery base maps earth cover • Climatology, meteorology, atmosphere

	N		S		E		W
--	---	--	---	--	---	--	---



Begin date	2000-01-01		
Coordinate reference system identifier	EPSG:3035		
Distribution format	<ul style="list-style-type: none"> • GeoTIFF () 		
OnLine resource	Protocol WWW:LINK-1.0-http--link	Linkage https://land.copernicus.eu/user-corner/technical-library/clms_mrvpp_pum_d1-0.pdf	Name User manual
Hierarchy level	Dataset		

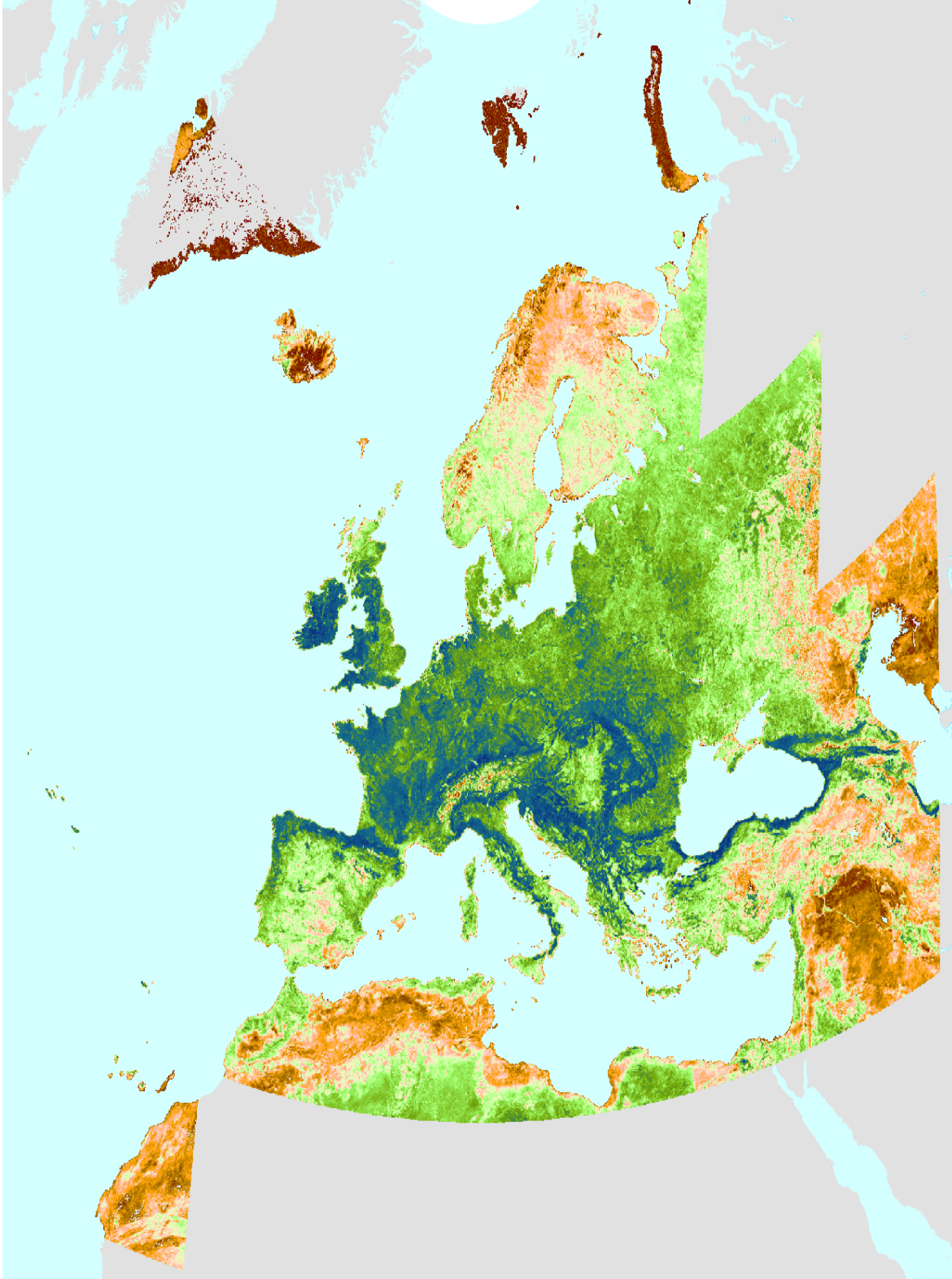
Conformance result

Date (Publication)	2010-12-08
Explanation	See the referenced specification
Statement	Vegetation Phenology and Productivity parameters (VPP) are based on Plant Phenology Index (PPI) seasonal trajectories and are yearly produced for two seasons using the Timesat software. One of the parameters is the small integral (SINT) that expresses the difference between the function describing the season and the base level from season start to season end.

Metadata

File identifier	89931f75-901b-439e-ad45-2066e399471f XML		
Metadata language	English		
Character set	UTF8		
Hierarchy level	Dataset		
Date stamp	2024-04-02T13:55:06.582332Z		
Metadata standard name	ISO 19115/19139		
Metadata standard version	1.0		
Metadata author	Organisation name	Individual name	Electronic mail address Website Role Point

Overviews



Provided by

