

Riparian Zones Green Linear Elements (vector), Aug. 2015

Riparian zones represent transitional areas occurring between land and freshwater ecosystems, characterised by distinctive hydrology, soil and biotic conditions and strongly influenced by the stream water. They provide a wide range of riparian functions (e.g. chemical filtration, flood control, bank stabilization, aquatic life and riparian wildlife support, etc.) and ecosystem services.

The Riparian Zones products support the objectives of several European legal acts and policy initiatives, such as the EU Biodiversity Strategy to 2020, the Habitats and Birds Directives and the Water Framework Directive.

Green Linear Elements (GLE) are ecologically significant, structural landscape elements which act as important dispersion vectors of biodiversity. GLEs comprise hedgerows and lines of trees and offer a wide range of ecosystem services: they are linked to both landscape richness and fragmentation of habitats, with a direct potential for restoration, and contribute also to hazard protection. Green linear elements form part of the Green Infrastructure and are specifically addressed in the EU Biodiversity Strategy 2020. The GLE product provides reliable and detailed geospatial information on the occurrence and spatial distribution of: Small linear vegetation features such as hedgerows, scrub and tree rows with a minimum length of 100m and a width of up to 10m; Isolated patches of trees and scrub with a size between 500 m² and 0.5 ha. Green linear elements including trees and hedgerows with 100m minimum length and 500 m² Minimum Mapping Unit (MMU).

The production of the Riparian Zones products was coordinated by the European Environment Agency in the frame of the EU Copernicus programme.

Simple

Date (Creation)	2015-08-08		
Date (Publication)	2015-08-08		
Edition	xx.xx		
Citation identifier	copernicus_v_3035_10_m_rz-gle_p_2011-2013_vxx_rxx		
Citation identifier	DAT-191-en		
Status	Obsolete		
Point of contact	Organisation name	Individual name	Electronic mail address Website Role
	European Environment Agency		copernicus@eea.europa.eu https://land.copernicus.eu Distributor
	European Environment Agency		copernicus@eea.europa.eu https://land.copernicus.eu Custodian
	European Environment Agency		copernicus@eea.europa.eu https://land.copernicus.eu Point of contact

Point of contact

No information provided.

Maintenance and update frequency	Continual
GEMET - INSPIRE themes, version 1.0	<ul style="list-style-type: none"> Land cover
Keywords	
Continents, countries, sea regions of the world.	<ul style="list-style-type: none"> EEA39
Keywords	

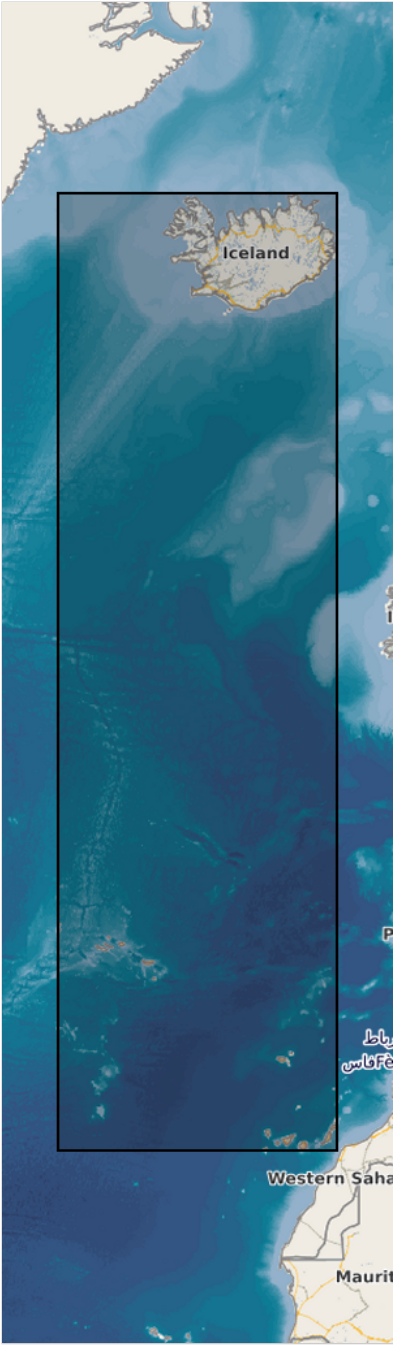
GEMET	<ul style="list-style-type: none"> • hedge • land cover • ecosystem services • landscape alteration • riparian zone • tree • land use
Spatial scope	<ul style="list-style-type: none"> • European
EEA Management Plan	<ul style="list-style-type: none"> • 2017 3.6.2
EEA topics	<ul style="list-style-type: none"> • Water • Land use • Biodiversity
Access constraints	Other restrictions
Other constraints	no limitations to public access
Use constraints	Other restrictions
Other constraints	<p>Access to data is based on a principle of full, open and free access as established by the Copernicus data and information policy Regulation (EU) No 1159/2013 of 12 July 2013. This regulation establishes registration and licensing conditions for GMES/Copernicus users.</p> <p>Free, full and open access to this data set is made on the conditions that:</p> <ol style="list-style-type: none"> 1. When distributing or communicating Copernicus dedicated data and Copernicus service information to the public, users shall inform the public of the source of that data and information. 2. Users shall make sure not to convey the impression to the public that the user's activities are officially endorsed by the Union. 3. Where that data or information has been adapted or modified, the user shall clearly state this. 4. The data remain the sole property of the European Union. Any information and data produced in the framework of the action shall be the sole property of the European Union. Any communication and publication by the beneficiary shall acknowledge that the data were produced "with funding by the European Union".
Spatial representation type	Vector
Distance	10 10 m
Language of dataset	English
Character set	UTF8
Topic category	<ul style="list-style-type: none"> • Environment • Imagery base maps earth cover
Begin date	2011-01-01
End date	2013-12-31

N

S

E

W



	N		S		E		W
--	---	--	---	--	---	--	---



Additional Information	Spatial Resolution information: The Minimum Mapping Width is 10 m
Coordinate reference system identifier	EPSG:3035
Distribution format	<ul style="list-style-type: none"> • SHP (1.1)

Distributor

Distributor contact	<table border="1"> <thead> <tr> <th>Organisation name</th> <th>Individual name</th> <th>Electronic mail address</th> <th>Website Role</th> </tr> </thead> <tbody> <tr> <td></td> <td></td> <td></td> <td></td> </tr> </tbody> </table>	Organisation name	Individual name	Electronic mail address	Website Role				
Organisation name	Individual name	Electronic mail address	Website Role						
Ordering instructions	<p>This dataset is no longer accessible from the website of the Copernicus Land Monitoring Service.</p> <p>You can request access to this dataset by contacting the service desk of the Copernicus Land Monitoring Service at copernicus@eea.europa.eu .</p>								

OnLine resource	<table border="1"> <thead> <tr> <th>Protocol</th> <th>Linkage</th> <th>Name</th> </tr> </thead> <tbody> <tr> <td>WWW:LINK-1.0-http--link</td> <td>https://land.copernicus.eu/en/products/riparian-zones/green-linear-elements-in-riparian-zones-catchments-regions#Download</td> <td>Download (requires authentication)</td> </tr> </tbody> </table>	Protocol	Linkage	Name	WWW:LINK-1.0-http--link	https://land.copernicus.eu/en/products/riparian-zones/green-linear-elements-in-riparian-zones-catchments-regions#Download	Download (requires authentication)
Protocol	Linkage	Name					
WWW:LINK-1.0-http--link	https://land.copernicus.eu/en/products/riparian-zones/green-linear-elements-in-riparian-zones-catchments-regions#Download	Download (requires authentication)					
Hierarchy level	Dataset						

Conformance result

Date (Publication)	2010-12-08
Explanation	See the referenced specification

Statement	<p>Semi-automatic classification and visual interpretation of Green Linear Elements (Nomenclature: 1: trees; 2: hedgerows and scrub) on 1.5m SPOT-6 and 2.5m SPOT-5 HRG satellite data from the DWH_MG2b_CORE_03 dataset (Optical VHR2 coverage over EU 2011-2013 and Riparian zones) with subsequently automated GIS-based generalisation. Geometric differentiation into linear structures as well as patches by considering a compactness factor (1. Linear structures of hedgerows/scrub and tree rows; 2. Patches of tree and hedgerows/scrub).</p> <p>Minimum Mapping Unit: 0.5 ha. Minimum Mapping Width: 10 m.</p>
------------------	--

Metadata

File identifier	9538a26a-d55d-4ba0-b77c-92eeb61d3061 XML
------------------------	--

