



## Soil moisture deficit during the vegetation growing season, annual time-series, 2000-2019, Sep. 2020

The dataset consists of a collection of annual soil moisture (SM) anomalies during the vegetation growing season (GS) for the years 2000-2019 across EEA 38 area and the United Kingdom. The vegetation growing season is defined by EEA's phenology data series "Vegetation growing season length 2000-2016", available in the EEA website and in this catalogue.

The anomalies are calculated based on the European Commission's Joint Research Centre European Drought Observatory (EDO) Soil Moisture Index (SMI) with respect to the 1995–2019 base period. The yearly start and end of GS periods are dynamic and calculated according to the EEA Phenology Indicators. A positive anomaly indicates that the observed SM was wetter than the long-term SM average for the base period, while a negative anomaly indicates that the observed SM was drier than the reference value. Because SM anomalies are measured in units of standard deviation from the long-term SMI average, they can be used to compare annual deficits/surplus of SM between geographic regions.

EDO is one of the early warning and monitoring systems of the Copernicus Emergency Management Service. As the dataset builds on EDO's SMI, it therefore contains modified Copernicus Emergency Management Service information (2019).

### Simple

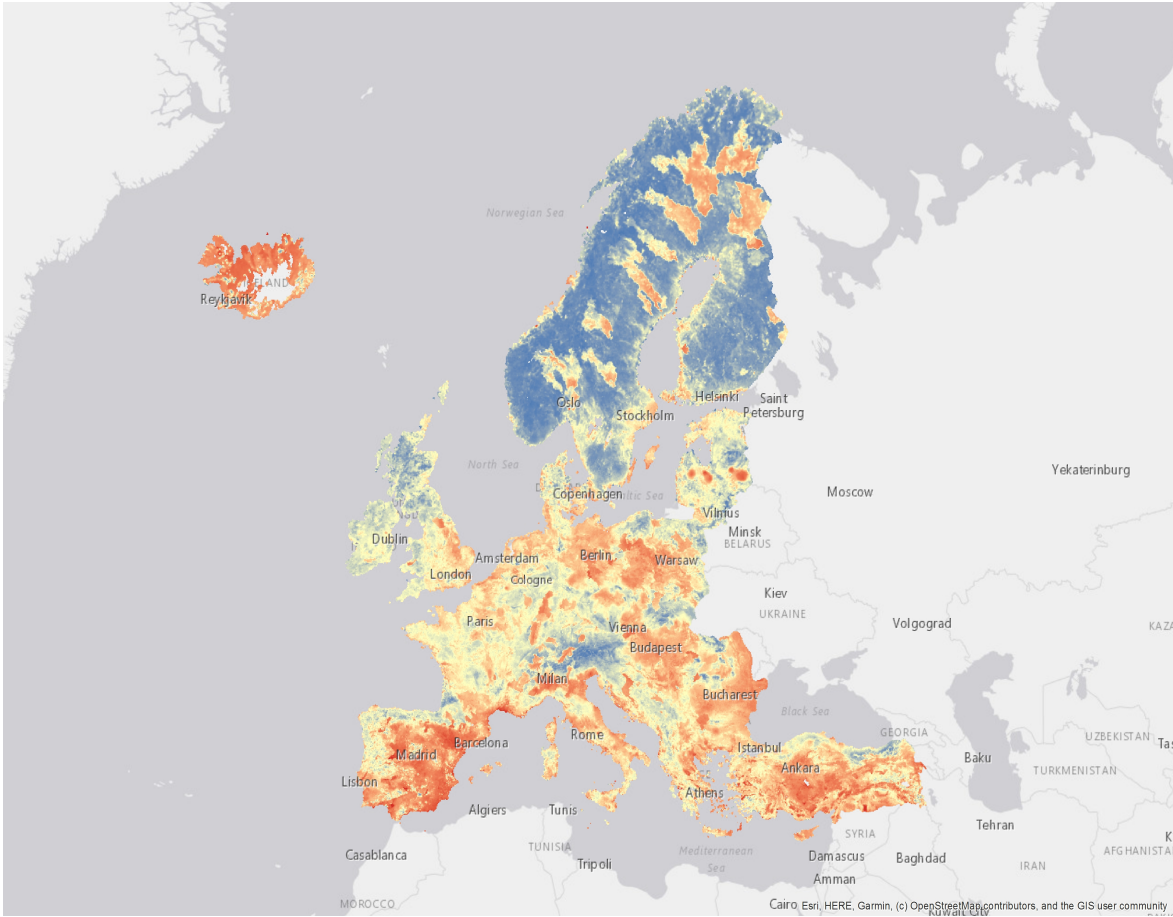
Date (Creation)	2020-09-28T00:00:00				
Date (Publication)	2020-09-28T00:00:00				
Edition	01.00				
Citation identifier	eea_r_3035_5_km_smoisture-anomalies-gs-2019_p_2000-2019_v01_r00				
Citation identifier	DAT-247-en				
Status	Superseded				
Point of contact	Organisation name	Individual name	Electronic mail address	Website	Role
	European Environment Agency		sdi@eea.europa.eu	<a href="http://www.eea.europa.eu">http://www.eea.europa.eu</a>	Point of contact
	European Environment Agency		sdi@eea.europa.eu		Custodian
Maintenance and update frequency	Annually				
GEMET - INSPIRE themes, version 1.0	<ul style="list-style-type: none"><li>Soil</li></ul>				
Keywords					
Keywords					
GEMET	<ul style="list-style-type: none"><li>soil moisture</li><li>climate change adaptation</li><li>drought</li><li>land use</li><li>environmental pressure</li><li>ecosystem degradation</li></ul>				
Continents, countries, sea regions of the world.	<ul style="list-style-type: none"><li>EEA38 (from 2020)</li><li>United Kingdom</li></ul>				
Temporal resolution	<ul style="list-style-type: none"><li>Annually</li></ul>				

<a href="#">Spatial scope</a>	<ul style="list-style-type: none"> <li>• <a href="#">European</a></li> </ul>
<a href="#">EEA topics</a>	<ul style="list-style-type: none"> <li>• <a href="#">Agriculture and food</a></li> <li>• <a href="#">Climate adaptation</a></li> <li>• <a href="#">Soil</a></li> <li>• <a href="#">Biodiversity</a></li> </ul>
<b>EEA Management Plan</b>	<ul style="list-style-type: none"> <li>• 2020 1.8.2</li> </ul>
<b>Access constraints</b>	Other restrictions
<b>Other constraints</b>	<a href="#">no limitations to public access</a>
<b>Use constraints</b>	Other restrictions
<b>Other constraints</b>	<p>This dataset is derived from the European Commission's Joint Research Centre European Drought Observatory (EDO) Soil Moisture Index (SMI), which as a component of the Copernicus Emergency Management Service, follows the Terms and Conditions of Access as stated here: <a href="https://edo.jrc.ec.europa.eu/edov2/php/index.php?id=1044">https://edo.jrc.ec.europa.eu/edov2/php/index.php?id=1044</a>.</p> <p>As an EEA derived product, the EEA standard re-use policy also applies: unless otherwise indicated, re-use of content on the EEA website for commercial or non-commercial purposes is permitted free of charge, provided that the source is acknowledged ( <a href="http://www.eea.europa.eu/legal/copyright">http://www.eea.europa.eu/legal/copyright</a>). Copyright holder: EEA, European Union.</p>
<b>Spatial representation type</b>	Grid
<b>Distance</b>	5 km
<b>Language of dataset</b>	English
<b>Topic category</b>	<ul style="list-style-type: none"> <li>• Climatology, meteorology, atmosphere</li> <li>• Environment</li> </ul>
<b>Begin date</b>	2000-01-01
<b>End date</b>	2019-12-31



Metadata language	English		
Character set	UTF8		
Hierarchy level	Dataset		
Date stamp	2023-06-14T11:53:53.103Z		
Metadata standard name	ISO 19115/19139		
Metadata standard version	1.0		
Metadata author	<div> <div> <div>Organisation name</div> <div>Individual name</div> </div> <div> <div>European Environment Agency</div> <div></div> </div> </div> <div> <div>Electronic mail address</div> <div>sdi@eea.europa.eu</div> </div> <div> <div>Website Role</div> <div>Point of contact</div> </div>		

Overviews



Provided by

