



Medium Resolution Vegetation Phenology and Productivity: Start-of-season date (raster 500m), Oct. 2022

The raster file is the time series of the start of the vegetation growing season. The start of the growing season time-series is based on the time series of the Plant Phenology Index (PPI) derived from the MODIS BRDF-Adjusted Reflectance product (MODIS MCD43 NBAR). The PPI index is optimized for efficient monitoring of vegetation phenology and is derived from the source MODIS data using radiative transfer solutions applied to the reflectance in visible-red and near infrared spectral domains. The start of season indicator is based on calculating the start of the vegetation growing season from the annual PPI temporal curve using the TIMESAT software for each year between and including 2000 and 2021.

The Start-of-Season Date (SOSD), one of the Vegetation Phenology and Productivity (VPP) parameters, is a product of the pan-European High Resolution Vegetation Phenology and Productivity (HR-VPP) component of the Copernicus Land Monitoring Service (CLMS).

The Start-of-Season Date (SOSD) marks the date when the vegetation growing season starts in the time profile of the Plant Phenology Index (PPI). The start-of-season occurs, by definition, when the PPI value reaches 25% of the season amplitude during the green-up period.

The Plant Phenology Index (PPI) is a physically based vegetation index, developed for improving the monitoring of the vegetation growth cycle. The PPI index values, with 5-day satellite revisit cycle, are first used in a function fitting to derive the PPI Seasonal Trajectories. From these Seasonal Trajectories, a suite of 13 Vegetation Phenology and Productivity (VPP) parameters are then computed and provided, for up to two seasons each year. The Start-of-Season Date (SOSD) is one of the 13 parameters. The full list is available in the Product User Manual: https://land.copernicus.eu/user-corner/technical-library/clms_mrvpp_pum_d1-0.pdf

The Start-of-Season Date (SOSD) time series dataset is made available as raster files with 500x 500m resolution, in ETRS89-LAEA projection corresponding to the MCD43 tiling grid, for those tiles that cover the EEA38 countries and the United Kingdom and for two seasons in each year from 2000 onwards. It is updated in the first quarter of each year.

The full on-line access to open and free data for this resource will be made available in the second half of 2024. Until then the data will be made available 'on-demand' by filling in the form at: <https://land.copernicus.eu/contact-form>

Simple

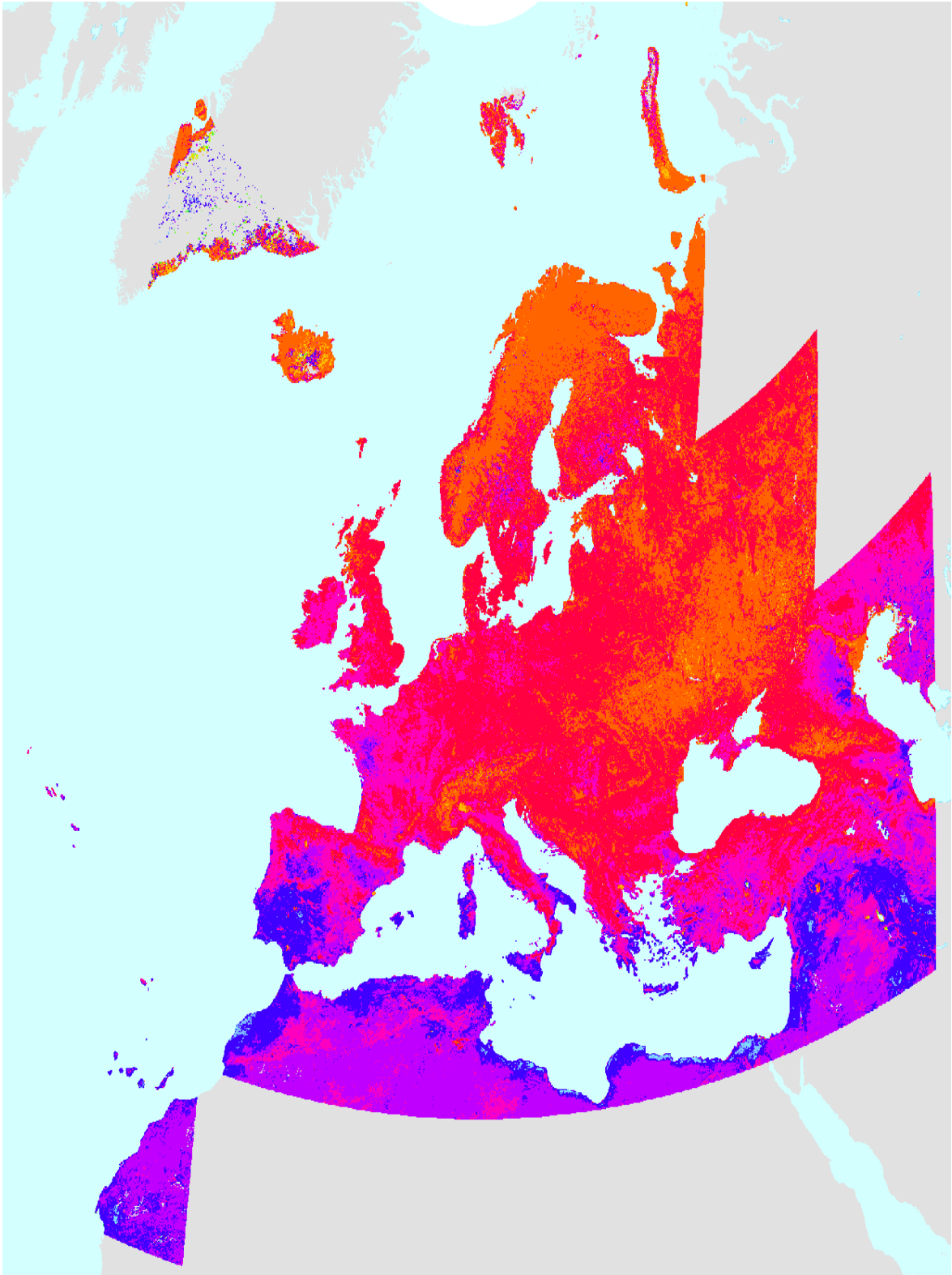
Date (Creation)	2022-06-08				
Date (Publication)	2022-10-10				
Edition	01.00				
Citation identifier	copernicus_r_3035_500_m_mrvpp-sos_p_2000-now_v01_r00				
Point of contact	Organisation name	Individual name	Electronic mail address	Website	Role
	European Commission			https://commission.europa.eu	Owner
	Copernicus Land Monitoring Service		copernicus@eea.europa.eu	https://land.copernicus.eu	Custodian
	European Environment Agency		sdi@eea.europa.eu	http://www.eea.europa.eu	Publisher
Maintenance and update frequency	Copernicus Land Monitoring Service helpdesk		copernicus@eea.europa.eu	https://land.copernicus.eu/en/contact-service-helpdesk	Point of contact
	Annually				
	GEMET - INSPIRE themes, version 1.0				
	<ul style="list-style-type: none">• Environmental monitoring facilities• Habitats and biotopes• Orthoimagery				
Keywords					
Keywords					

GEMET	<ul style="list-style-type: none"> • remote sensing • land • plant ecology • vegetation • index • plant production • productivity
Spatial scope	<ul style="list-style-type: none"> • European
Temporal resolution	<ul style="list-style-type: none"> • Annually
Continents, countries, sea regions of the world.	<ul style="list-style-type: none"> • United Kingdom • EEA38 (from 2020)
Access constraints	Other restrictions
Other constraints	no limitations to public access
Use constraints	Other restrictions
Other constraints	<p>The Copernicus component is governed by Regulation (EU) No 2021/696 of the European Parliament and of the Council of 28 April 2021 establishing the Union Space Programme and the European Union Agency for the Space Programme and repealing Regulations (EU) No 912/2010, (EU) No 1285/2013 and (EU) No 377/2014 and Decision No 541/2014/EU. Within the Copernicus component, a portfolio of land monitoring activities has been delegated by the European Union to the European Environment Agency (EEA) and the DG Joint Research Centre of the European Commission.</p> <p>The Copernicus land monitoring products and services are made available on a principle of full, open and free access, as established by the Commission Delegated Regulation (EU) No 1159/2013 of 12 July 2013.</p> <p>Free, full and open access to the products and services of the Copernicus Land Monitoring Service is made on the conditions that:</p> <ol style="list-style-type: none"> 1. When distributing or communicating Copernicus Land Monitoring Service products and services (data, software scripts, web services, user and methodological documentation and similar) to the public, users shall inform the public of the source of these products and services. 2. Where the Copernicus Land Monitoring Service products and services have been adapted or modified by the user, the user shall clearly state this. 3. Users shall make sure not to convey the impression to the public that the user's activities are officially endorsed by the European Union.
Aggregate Datasetidentifier	copernicus_r_utm-wgs84_10_m_hrvpp-vi-qflag2_p_2017-ongoing_v01_r01
Association Type	Cross reference
Aggregate Datasetidentifier	copernicus_r_utm-wgs84_10_m_hrvpp-vi-ndvi_p_2017-ongoing_v01_r01
Association Type	Cross reference
Aggregate Datasetidentifier	copernicus_r_utm-wgs84_10_m_hrvpp-vi-fapar_p_2017-ongoing_v01_r01
Association Type	Cross reference
Aggregate Datasetidentifier	copernicus_r_utm-wgs84_10_m_hrvpp-vi-lai_p_2017-ongoing_v01_r01
Association Type	Cross reference
Aggregate Datasetidentifier	0c52604e-8258-4d83-adfa-fda224eadbb6

Association Type	revision of
Spatial representation type	Grid
Distance	500 m
Language of dataset	English
Character set	UTF8
Topic category	<ul style="list-style-type: none">• Environment• Imagery base maps earth cover• Climatology, meteorology, atmosphere

Organisation name	Individual name	mail address	Website Role
European Environment Agency		sdi@eea.europa.eu	Point of contact

Overviews



Provided by

