

European catchments and Rivers network system (Ecrins)

The aggregation of European catchments and Rivers network system (Ecrins) is a geographical information system of the European hydrographical systems with a full topological information. It is organised from a layer of 181,071 "functional elementary catchments (FECs)" which average size is ~62 km², fully connected with explicit identifier (ID) relationships and upstream area. Catchments are grouped as sub-basins, river basin districts (actual and functional to meet hydrographical continuity).

The catchments are as well organised according to their sea shore of emptying to meet Marine Strategy delineations. Catchments are drained by 1,348,163 river segments, sorted as "main drains" (connecting together the FECs) and secondary drains (internal to a FEC). river segments mimic the natural drainage, however fulfilling the topological constraint of "0,1 or 2 upstreams, single or 0 downstream". Each segment is populated with distance to the sea, to ease further processing. They are connected to elementary catchments and nodes documented with altitude.

Simple

Date (Publication)	2012-06-13				
Citation identifier	eea_ecrins_s				
Citation identifier	DAT-120-en				
Point of contact	Organisation name	Individual name	Electronic mail address	Website	Role
	European Environment Agency		sdi@eea.europa.eu	http://www.eea.europa.eu	Point of contact
EEA Management Plan	<ul style="list-style-type: none"> 2012 1.4.1 				
Keywords					
Keywords					
EEA topics	<ul style="list-style-type: none"> Water 				
GEMET	<ul style="list-style-type: none"> hydrography 				
GEMET - INSPIRE themes, version 1.0	<ul style="list-style-type: none"> Hydrography 				
Spatial scope	<ul style="list-style-type: none"> European 				
Aggregate Dataset identifier	eea-data-and-maps-data-european-catchments-and-rivers-network				
Association Type	Is composed of				
Aggregate Dataset identifier	0176688a-1d75-45bc-8419-aaf45a59a72f				
Association Type	Is composed of				
Aggregate Dataset identifier	48545018-0505-494c-9ee1-d9ae792d4cf8				
Association Type	Is composed of				
Aggregate Dataset identifier	c156fb97-f3ea-4e61-b33f-b48236cb7f30				
Association Type	Is composed of				
Aggregate Dataset identifier	af51f22b-bd28-4217-aa73-1c95c08577d1				

Association Type	Is composed of
Aggregate DatasetIdentifier	f41103f0-73ba-4fe7-8cb6-12b7e3c4f189
Association Type	Is composed of
Aggregate DatasetIdentifier	663e4a29-3a1c-461b-9975-174f46ccd944
Association Type	Is composed of
Aggregate DatasetIdentifier	5fd67b22-2e7e-445c-b466-a0faa842001a
Association Type	Is composed of
Aggregate DatasetIdentifier	88bc8c56-55d6-45a4-91bf-a03843b3e3e7
Association Type	Is composed of
Association Type	Is composed of
Spatial representation type	Vector
Denominator	250000
Language of dataset	English
Character set	UTF8
Topic category	<ul style="list-style-type: none"> Inland waters

	N		S		E		W
--	---	--	---	--	---	--	---

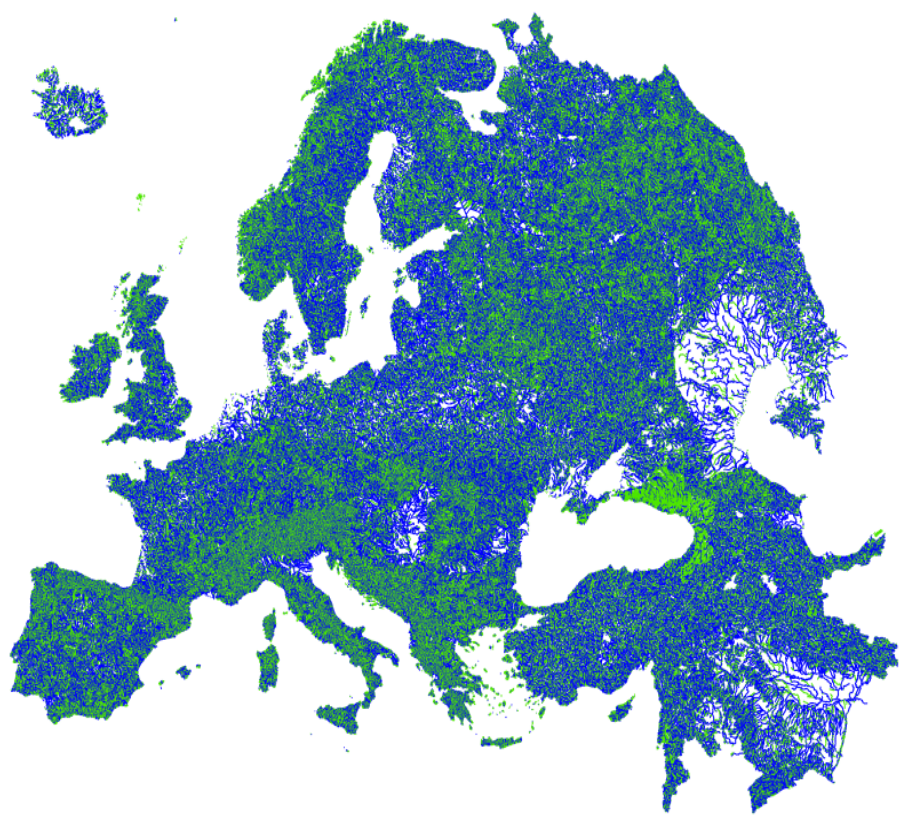


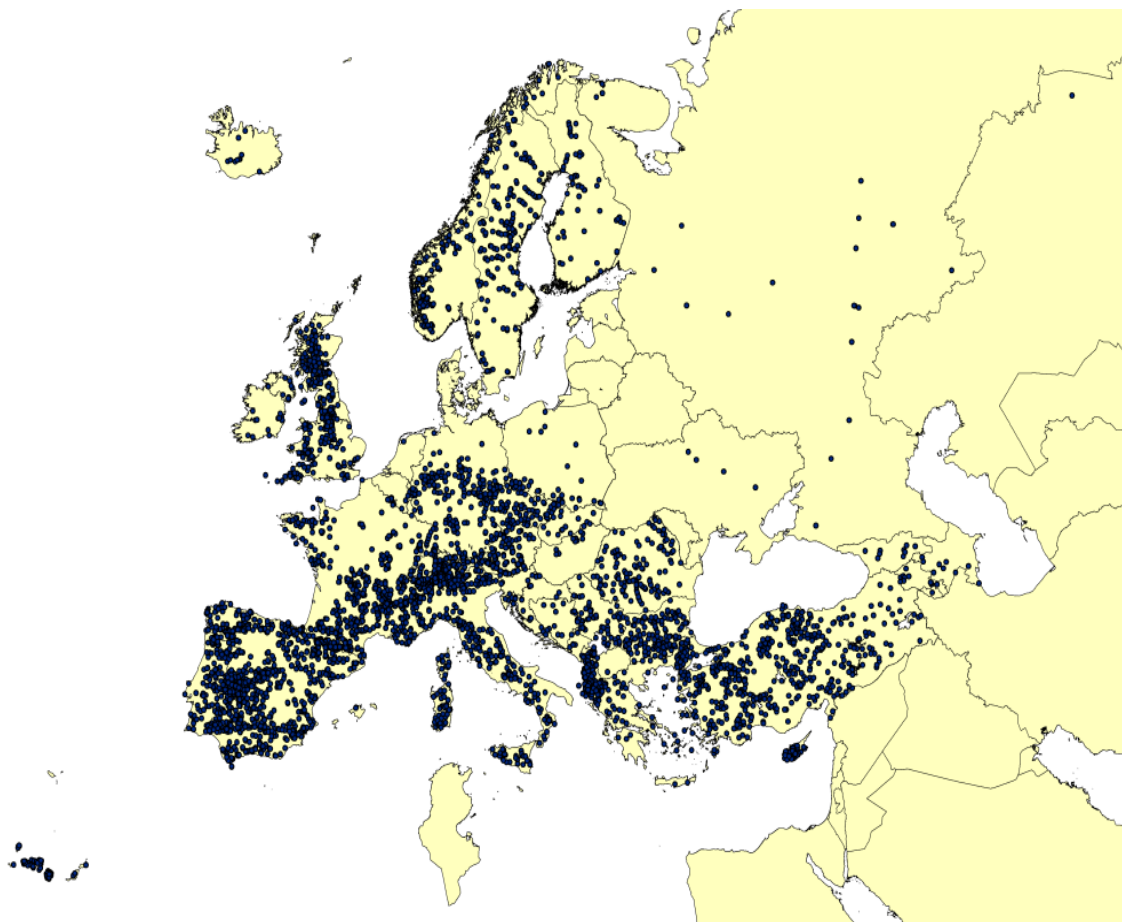
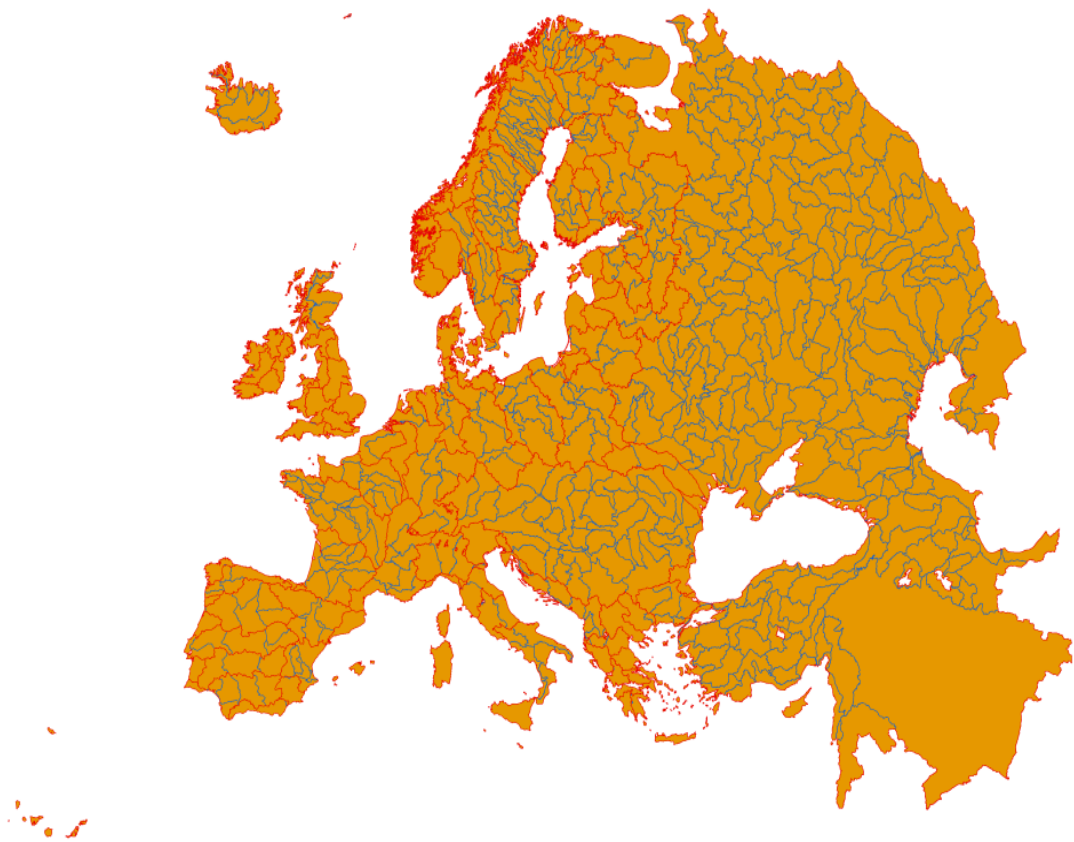
Begin date	1990-01-01
End date	2006-12-31

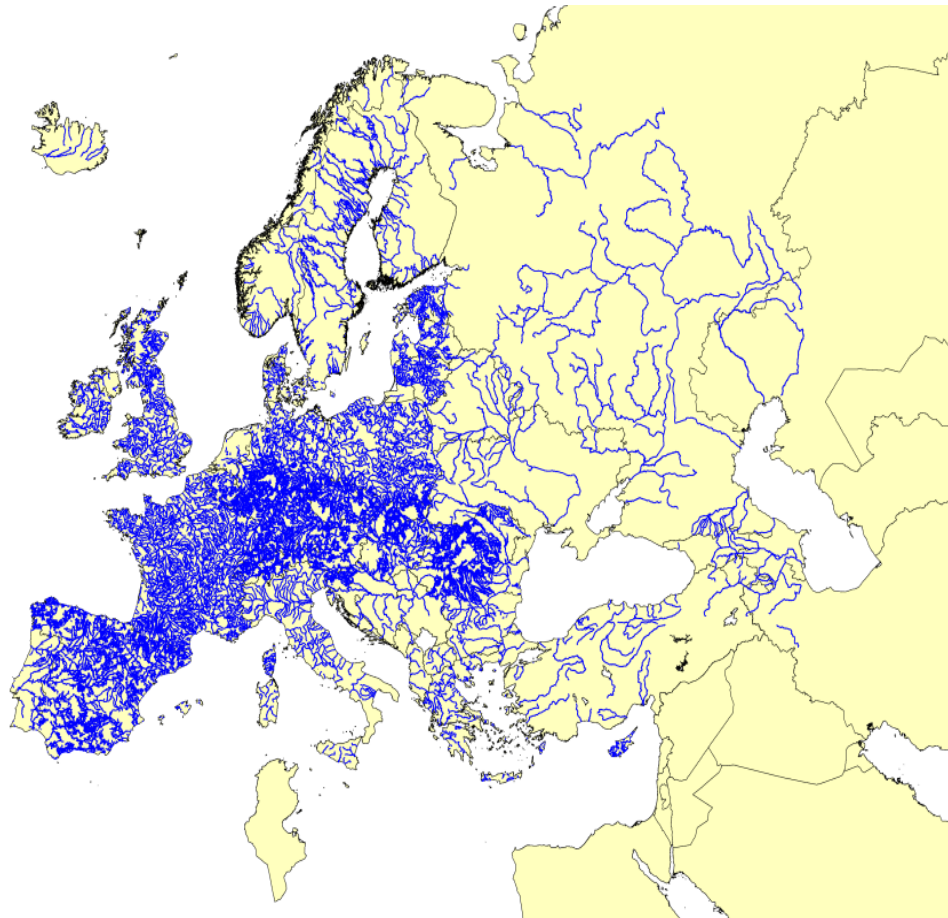
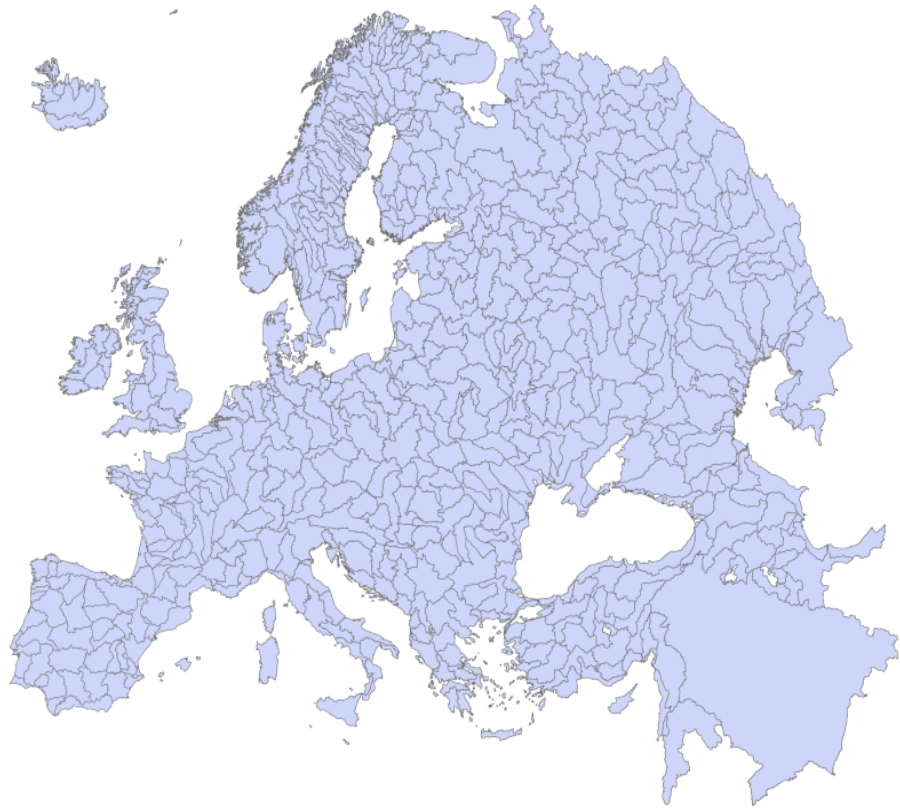
Metadata

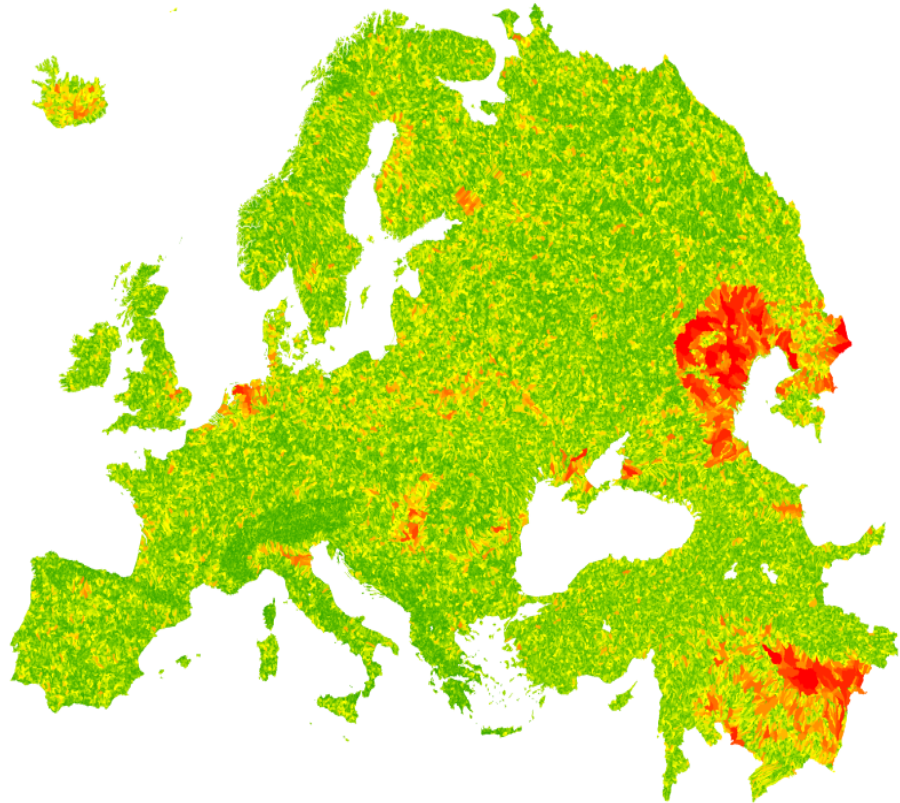
File identifier	a9844d0c-6dfb-4c0c-a693-7d991cc82e6e XML		
Metadata language	English		
Character set	UTF8		
Hierarchy level	Series		
Date stamp	2022-09-29T14:45:55.125Z		
Metadata standard name	ISO 19115:2003/19139		
Metadata standard version	1.0		
Metadata author	Organisation name	Individual name	Electronic mail address Website Role
	European Environment Agency		sdi@eea.europa.eu Point of contact

Overviews









Provided by

