

## EUNIS habitat suitability - modelled distribution (spatial data)

This series of metadata corresponds to the EUNIS predicted modelled distribution of habitat suitability dataset for the following habitat types:

- Coastal habitat types (N)
- Forest and other wooded land habitat types (T)
- Grassland and lands dominated by forbs, mosses or lichens habitat types (R)
- Heathland, scrub and tundra habitat types (S)
- Inland habitats with no or little soil and mostly with sparse vegetation (U)
- Littoral biogenic habitat types (salt marshes) (M)
- Vegetated man-made habitat types (V)
- Wetlands habitat types (Q)

The sample datasets count more than 100 raster files with a resolution on 100 m.

### Simple

<b>Date (Publication)</b>	2021-11-15
<b>Citation identifier</b>	eea_eunis-habitat-suitability_s
<b>Citation identifier</b>	DAT-137-en

### Point of contact

No information provided.

### Point of contact

No information provided.

### Point of contact

No information provided.

<b>Continents, countries, sea regions of the world.</b>	<ul style="list-style-type: none"> <li>• EEA38 (from 2020)</li> <li>• United Kingdom</li> <li>• EEA39</li> </ul>
<b>EEA Management Plan</b>	<ul style="list-style-type: none"> <li>• 2021 1.1.4</li> </ul>
<b>Keywords</b>	
<b>Keywords</b>	
<b>EEA topics</b>	<ul style="list-style-type: none"> <li>• Biodiversity</li> <li>• Soil</li> <li>• Water</li> </ul>

<b>GEMET</b>	<ul style="list-style-type: none"> <li>• modelling</li> <li>• terrestrial ecosystem</li> <li>• forest biodiversity</li> <li>• woodland ecosystem</li> <li>• natural area</li> <li>• habitat</li> <li>• forest</li> <li>• grassland</li> <li>• lichen</li> <li>• moss</li> <li>• tundra</li> <li>• heathland</li> <li>• salt marsh</li> <li>• coastal ecosystem</li> </ul>
<b>GEMET - INSPIRE themes, version 1.0</b>	<ul style="list-style-type: none"> <li>• Habitats and biotopes</li> </ul>
<b><a href="#">Spatial scope</a></b>	<ul style="list-style-type: none"> <li>• <a href="#">European</a></li> </ul>
<b>Aggregate DatasetIdentifier</b>	169b69b5-a1f8-4aed-8042-bfcb4c1e4948
<b>Association Type</b>	Is composed of
<b>Aggregate DatasetIdentifier</b>	70fbb9d1-b61b-4bdc-973b-fec4d8835ccd
<b>Association Type</b>	Is composed of
<b>Aggregate DatasetIdentifier</b>	156377d3-14ee-42f9-855e-71d8c710d441
<b>Association Type</b>	Is composed of
<b>Aggregate DatasetIdentifier</b>	96b7f7df-3f79-4001-b489-1d918c813a62
<b>Association Type</b>	Is composed of
<b>Aggregate DatasetIdentifier</b>	5b3e4da9-4c14-498c-b20e-bc514470eab5
<b>Association Type</b>	Is composed of
<b>Aggregate DatasetIdentifier</b>	05cbf86d-0168-47f5-9384-18c84b14f59c
<b>Association Type</b>	Is composed of
<b>Aggregate DatasetIdentifier</b>	917348e8-42ea-4df9-8fe8-4d47bcd8d241
<b>Association Type</b>	Is composed of
<b>Aggregate DatasetIdentifier</b>	f97c9bdc-3bdc-45e9-8f28-e687702096d7
<b>Association Type</b>	Is composed of
<b>Spatial representation type</b>	Grid
<b>Language of dataset</b>	English
<b>Character set</b>	UTF8
<b>Topic category</b>	<ul style="list-style-type: none"> <li>• Biota</li> </ul>



N

S

E

W



	N		S		E		W
--	---	--	---	--	---	--	---

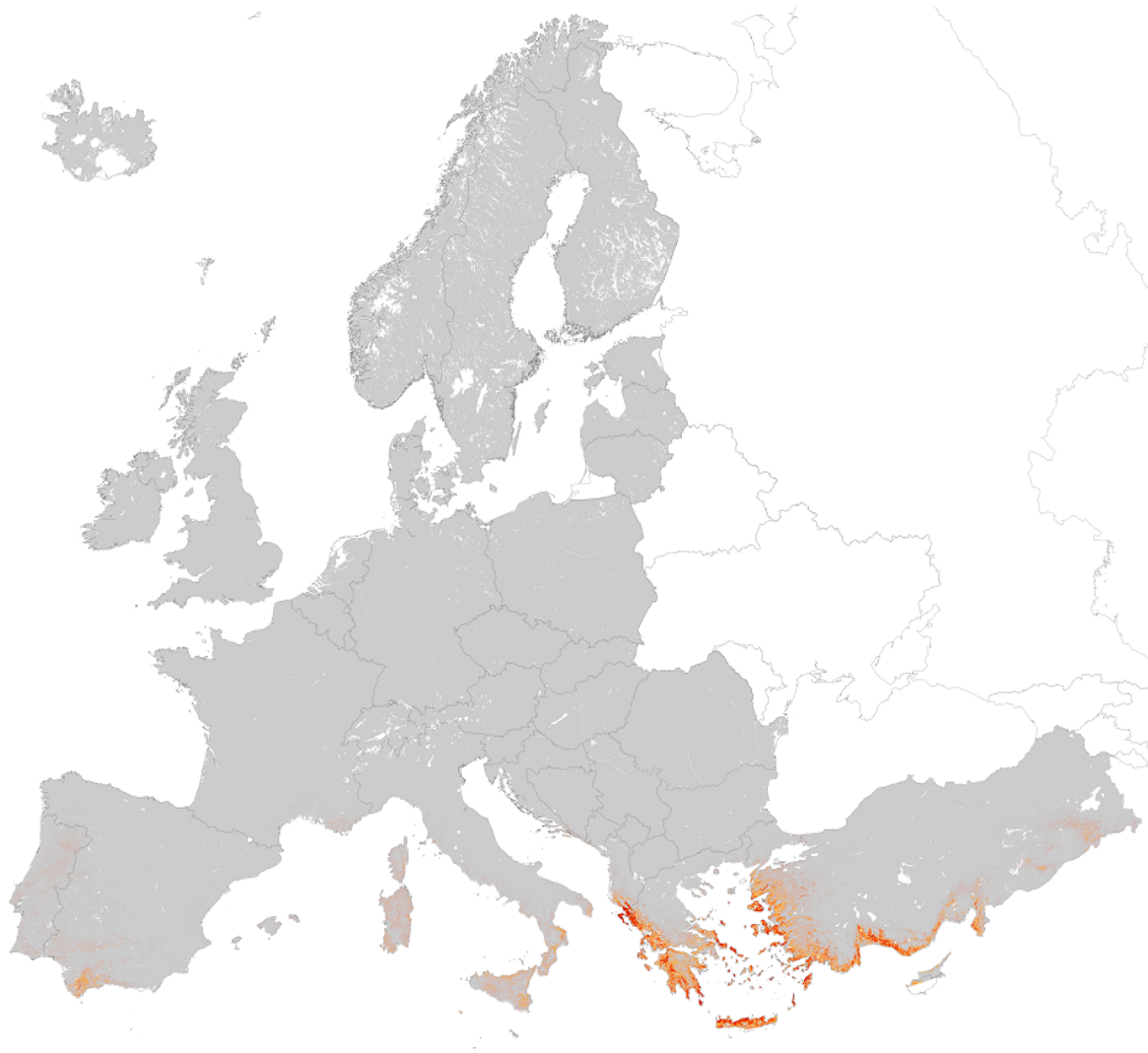


<b>Begin date</b>	1940-01-01
<b>End date</b>	2017-12-31

### Metadata

<b>File identifier</b>	adbb2781-2d4d-4a6c-8ce1-875bae0f6703 <a href="#">XML</a>
<b>Metadata language</b>	English
<b>Character set</b>	UTF8
<b>Hierarchy level</b>	Series
<b>Date stamp</b>	2024-01-03T13:17:15.051Z
<b>Metadata standard name</b>	ISO 19115:2003/19139
<b>Metadata standard version</b>	1.0

### Overviews



Provided by



About  
Github