

Copernicus EEA38 Boundary Layer with 250 m buffer (vector), version 1, Nov. 2022

For the provision of land monitoring services within the Copernicus programme, a consistent, stable, sufficiently detailed boundary layer is required at EEA, which provides a "land mask" for the area that needs to be monitored.

This metadata refers to the Copernicus boundary layer covering EEA38 in vector format (SHP and GDB), including the French DOM (French Guiana GF, Guadeloupe GP, Martinique MQ, Mayotte YT and Reunion RE).

The production of this Border Product was coordinated by the European Environment Agency in the frame of the EU Copernicus programme.

IMPORTANT NOTE: This dataset is only available for internal use within EEA in the context of the EU Copernicus programme. Copyright restrictions apply, as in this product ungeneralised data from EuroGeographics EuroBoundary Map Version 12 is included. Use of this dataset has therefore to be agreed with EEA and ultimately with EuroGeographics.

Simple

Date (Creation)	2022-09-13			
Date (Publication)	2023-01-31			
Edition	01.00			
Citation identifier	eea_v_3035_1_mio_copernicus-250-m-buffer_i_2012-2018_v01_r00			
Point of contact	Organisation name	Individual name	Electronic mail address	Website Role
	European Environment Agency		sdi@eea.europa.eu	http://www.eea.europa.eu Point of contact
	European Environment Agency		sdi@eea.europa.eu	Custodian

Point of contact

No information provided.

Maintenance and update frequency	As needed
GEMET - INSPIRE themes, version 1.0	<ul style="list-style-type: none"> Administrative units
Keywords	
Keywords	
GEMET	<ul style="list-style-type: none"> coast administrative boundary
Continents, countries, sea regions of the world.	<ul style="list-style-type: none"> EEA38 (from 2020)
Spatial scope	<ul style="list-style-type: none"> European
EEA topics	<ul style="list-style-type: none"> Land use
	Other restrictions

Access constraints	public access limited according to Article 13(1)(e) of the INSPIRE Directive
Other constraints	Other restrictions
Use constraints	<p>INTELLECTUAL PROPERTY RIGHTS: The Commission (and EEA) is authorized to distribute derived geographic data and other derived products based on EuroGeographics Administrative and Topographic spatial datasets, if (1) The original geometry is generalised to the equivalent of a scale of 1:3000000 or smaller, applying the same quality principles in terms of resolution and accuracy as for the original geographic data or if the content of information in terms of number of features is less or equal to 20% of the number of features in the original geographic data (for the data extent relevant to the data to be distributed), (2) The data is not used for commercial purpose and, (3) The source is acknowledged. More information about the acknowledgement of the source or metadata is given in the document "LicenseConditions.pdf" provided with the dataset.</p>
Other constraints	
Spatial representation type	Vector
Denominator	1000000
Language of dataset	English
Topic category	<ul style="list-style-type: none"> Boundaries

	N		S		E		W
--	---	--	---	--	---	--	---



Begin date	2012-01-01
End date	2018-01-20

	N
--	---

	S
--	---

	E
--	---

	W
--	---



	N
--	---

	S
--	---

	E
--	---

	W
--	---



	N
--	---

	S
--	---

	E
--	---

	W
--	---



N

S

E

W

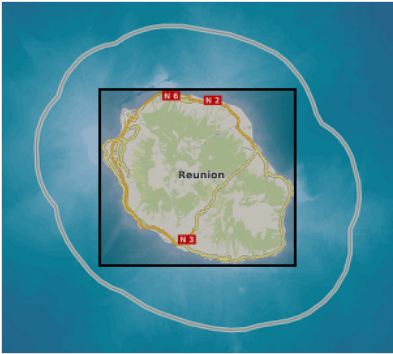


N

S

E

W



Coordinate reference system identifier	EPSG:3035
Coordinate reference system identifier	EPSG:32740
Coordinate reference system identifier	EPSG:32738
Coordinate reference system identifier	EPSG:32620
Coordinate reference system identifier	EPSG:32622
Distribution format	<ul style="list-style-type: none">SHP ()

OnLine resource

No information provided.

OnLine resource

No information provided.

Hierarchy level	Dataset
-----------------	---------

Conformance result

Date (Publication)	2010-12-08
Explanation	See the referenced specification

Statement	<p>The dataset is based on a generalisation to a scale of about 1:1 000 000 (a buffer of 250m is applied) of the Copernicus Border Expert product. The Copernicus Border Expert product is based on:</p> <ul style="list-style-type: none">* the EU-Hydro Coastline Version 3 from EEA* the EEA coastline for analysis Version 2* the EBM GISCO Hybrid Layer from EEA* the EuroGeographics EuroBoundary Map Version 12* the "Water and Wetness High Resolution Layer 2015" from EEA* the JRC-Global Surface Water Occurrence layer. <p>The territory of the United Kingdom has been removed, due to its exit from the EEA.</p> <p>IMPORTANT NOTE: This dataset is only available for internal use within EEA in the context of the EU Copernicus programme. Copyright restrictions apply, as in this product ungeneralised data from EuroGeographics EuroBoundary Map Version 12 is included. Use of this dataset has therefore to be agreed with EEA and ultimately with EuroGeographics.</p>
-----------	---

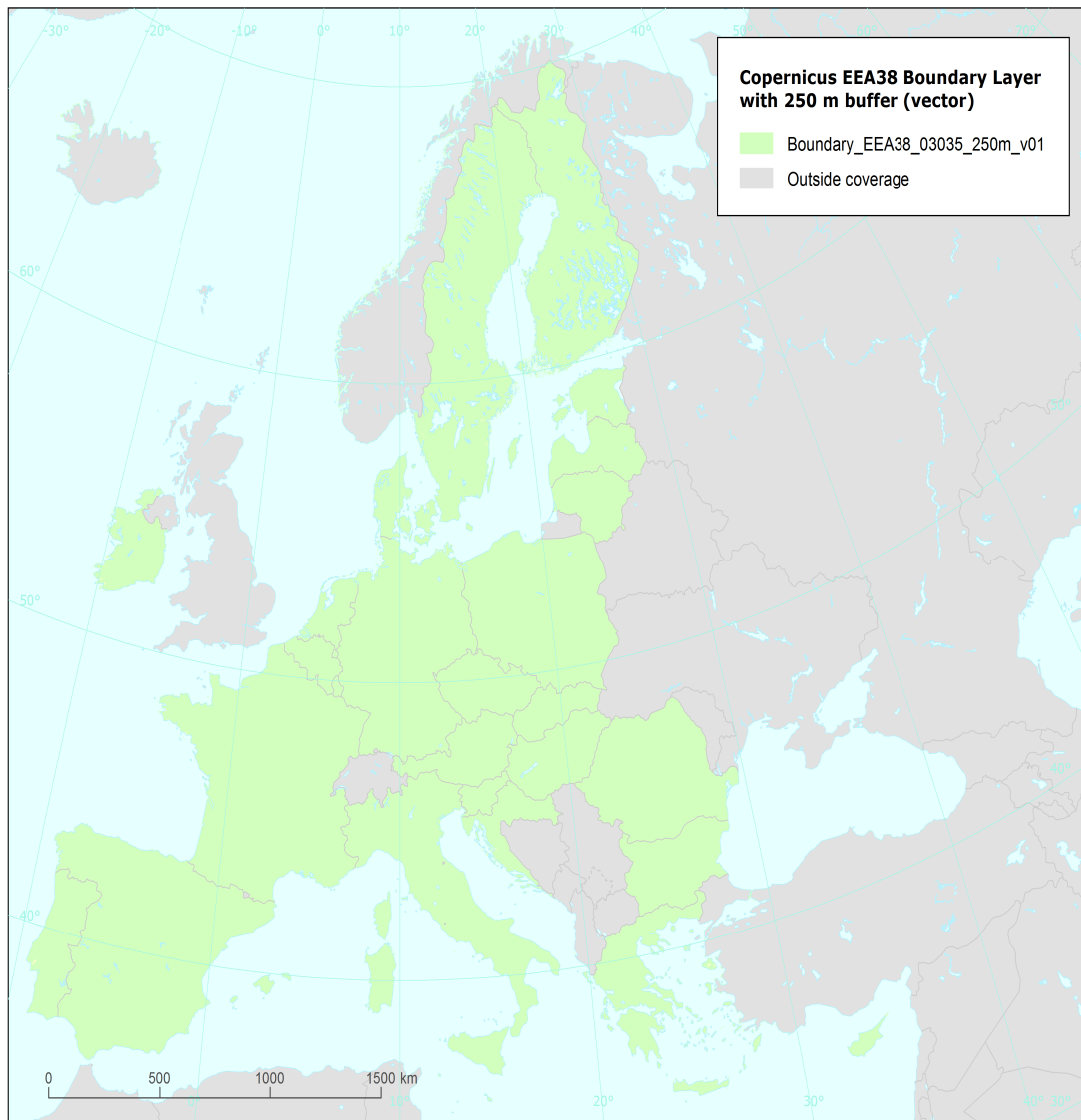
Source

- [Copernicus EEA39 Border Expert product \(vector\), version 3, Jan. 2019](#)

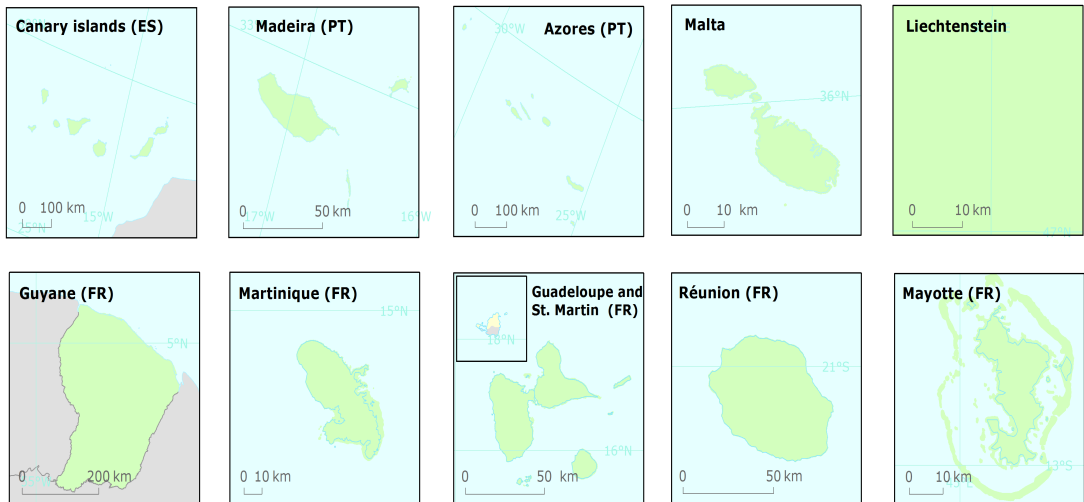
Metadata

File identifier	b386b336-5481-4b04-83a8-c1bca0300aee XML		
Metadata language	English		
Character set	UTF8		
Hierarchy level	Dataset		
Date stamp	2023-02-03T12:00:51.065Z		
Metadata standard name	ISO 19115/19139		
Metadata standard version	1.0		
Metadata author	<div>Organisation name</div> <div>European Environment Agency</div>	<div>Individual name</div>	<div>Electronic mail address</div> <div>sdi@eea.europa.eu</div> <div>Website Role</div> <div>Point of contact</div>

Overviews



Reference data : © EuroGeographics, © FAO (UN), © TurkStat Source: European Commission – Eurostat/GISCO



Provided by

