

## European Ground Motion Service (EGMS)

The European Ground Motion Service (EGMS) provides consistent and reliable information regarding natural and anthropogenic ground motion over the Copernicus participating states and across national borders, with millimeter accuracy.

The EGMS distributes three levels of products updated annually: basic, calibrated and ortho.

The EGMS distributes three product levels updated annually:

Basic. Line of sight velocity maps in ascending and descending orbits with annotated geolocalisation and quality measures per measurement point. Velocities in the basic products are referred to a local reference point.

Calibrated. Line of sight velocity maps in ascending and descending orbits referenced to a model derived from global navigation satellite systems data. Calibrated velocities are absolute, being no longer relative to a local reference point.

Ortho. Components of motion (horizontal and vertical) anchored to the reference model used above. Ortho products are resampled to a 100 m grid.

The EGMS is part of the European Union's Copernicus Land Monitoring Service.

## Simple

<b>Date (Publication)</b>	2023-10-25
<b>Citation identifier</b>	copernicus_egms_s

### Point of contact

No information provided.

### Point of contact

No information provided.

<b>Continents, countries, sea regions of the world.</b>	<ul style="list-style-type: none"> <li>Norway</li> <li>EU27 (from 2020)</li> <li>Iceland</li> <li>United Kingdom</li> <li>EEA38 (from 2020)</li> </ul>
<b>EEA Management Plan</b>	<ul style="list-style-type: none"> <li>2023 6.5.32</li> </ul>
<b>Keywords</b>	
<b>Keywords</b>	
<a href="#">EEA topics</a>	<ul style="list-style-type: none"> <li>Land use</li> <li>Buildings and construction</li> <li>Production and consumption</li> </ul>
<b>GEMET</b>	<ul style="list-style-type: none"> <li>geological process</li> <li>landslide</li> </ul>

	<ul style="list-style-type: none"> <li>• built environment</li> <li>• subsidence</li> <li>• earth observation</li> <li>• risk reduction</li> <li>• geo-referenced data</li> <li>• urban area</li> <li>• infrastructure</li> <li>• calibration</li> <li>• geodesy</li> <li>• model</li> <li>• geo-referenced information</li> </ul>
<b>GEMET - INSPIRE themes, version 1.0</b>	<ul style="list-style-type: none"> <li>• Natural risk zones</li> </ul>
<a href="#">Spatial scope</a>	<ul style="list-style-type: none"> <li>• <a href="#">European</a></li> </ul>
<b>Temporal resolution</b>	<ul style="list-style-type: none"> <li>• Weekly</li> <li>• Not planned</li> </ul>
<b>Aggregate Datasetidentifier</b>	bef2507a-13cf-44c0-a809-0a1566f27631
<b>Association Type</b>	Is composed of
<b>Aggregate Datasetidentifier</b>	538ebcde-a5cb-4911-ab61-f97b661a3193
<b>Association Type</b>	Is composed of
<b>Aggregate Datasetidentifier</b>	dbc229ee-b94e-44e1-b0db-9bc57076bef1
<b>Association Type</b>	Is composed of
<b>Aggregate Datasetidentifier</b>	5957ac99-3fb1-416c-8a56-2fb62fae74c1
<b>Association Type</b>	Is composed of
<b>Aggregate Datasetidentifier</b>	41cc308a-4519-411c-afe2-ea3d028d935d
<b>Association Type</b>	Is composed of
<b>Aggregate Datasetidentifier</b>	9bd4186b-7e99-4630-86e0-df4581169a00
<b>Association Type</b>	Is composed of
<b>Aggregate Datasetidentifier</b>	0a94b5d4-b414-4f2b-a6be-eea73094a0f5
<b>Association Type</b>	Is composed of
<b>Aggregate Datasetidentifier</b>	b3f4fd3d-c2d1-4ee9-b2ee-286196a5d261
<b>Association Type</b>	Is composed of
<b>Aggregate Datasetidentifier</b>	1aeea29f-cea2-4494-af80-789a038a87b8
<b>Association Type</b>	Is composed of
<b>Aggregate Datasetidentifier</b>	8780c353-e01e-4b51-bbb3-e1e01a597033
<b>Association Type</b>	Is composed of

Aggregate Datasetidentifier	fef95698-bcb5-4e68-9575-f7dbbf835dd7
Association Type	Is composed of
Aggregate Datasetidentifier	943e9cbb-f8ef-4378-966c-63eb761016a9
Association Type	Is composed of
Aggregate Datasetidentifier	d92e61be-d6e8-4bc1-aa10-f742bf27bab9
Association Type	Is composed of
Aggregate Datasetidentifier	1b2eb0d6-8c3a-4de2-b99d-10a30079f3cc
Association Type	Is composed of
Spatial representation type	Vector
Language of dataset	English
Character set	UTF8
Topic category	<ul style="list-style-type: none"><li>Geoscientific information</li></ul>

N

S

E

W

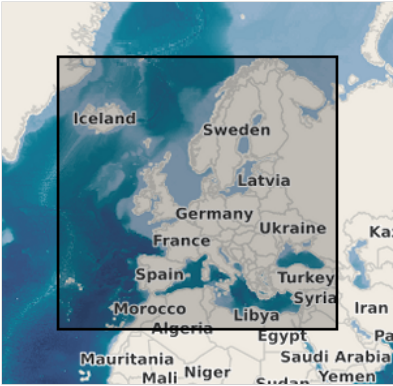


N

S

E

W

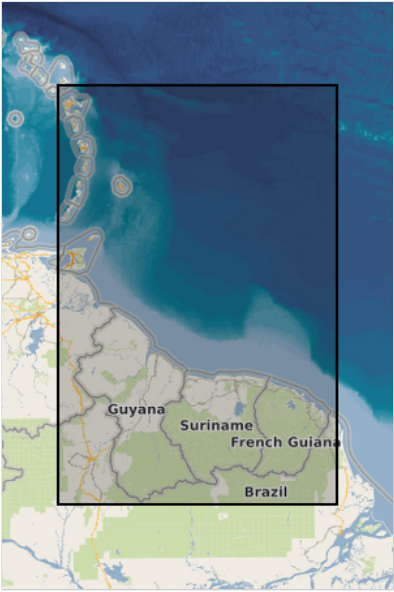


N

S

E

W

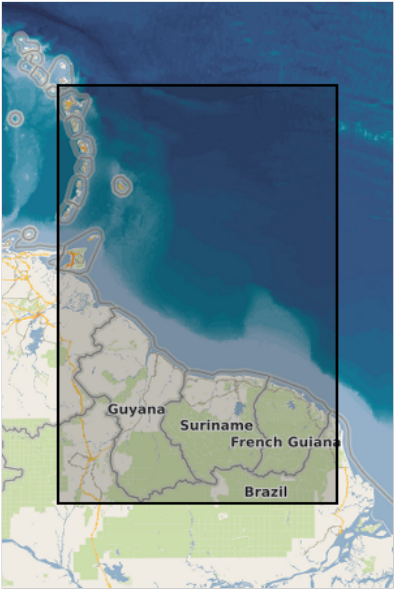


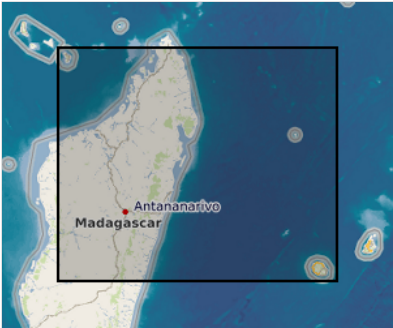
N

S

E

W





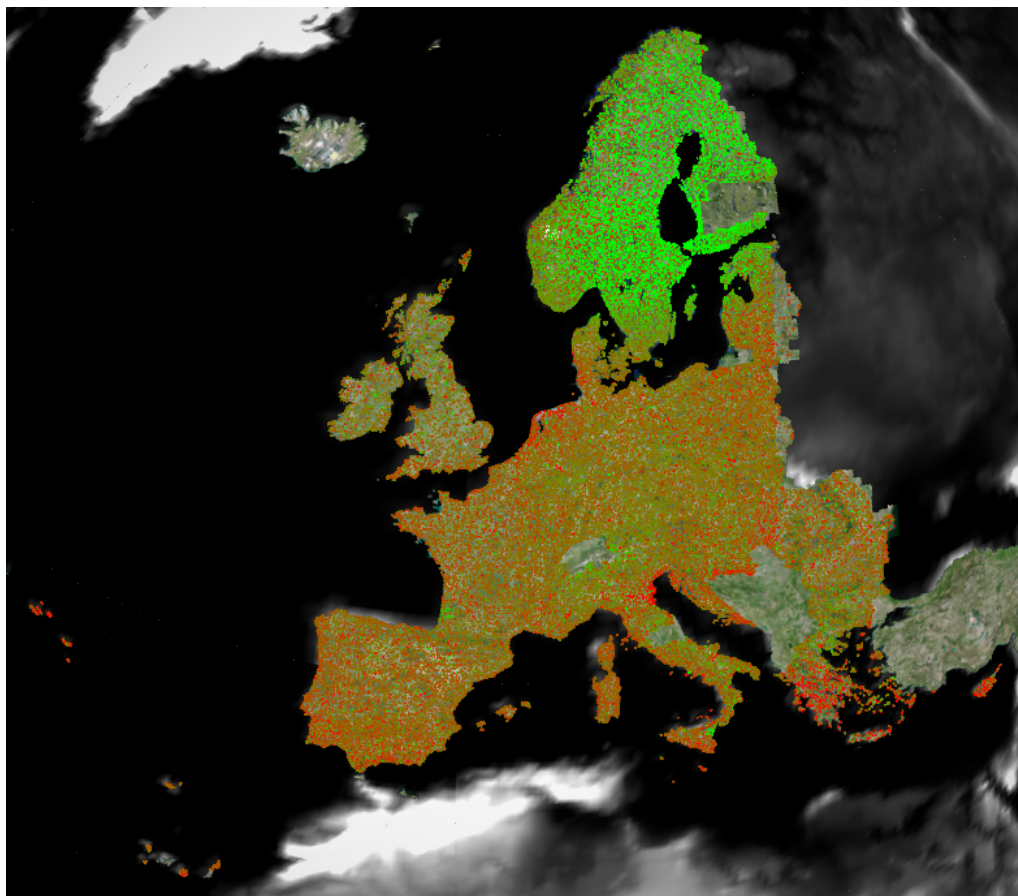
Begin date	2015-02-01
End date	2020-12-31
Begin date	2015-02-01
End date	2021-12-31
Begin date	2015-02-01
End date	2023-01-01
Begin date	2018-01-01
End date	2022-12-31
Begin date	2018-02-01
End date	2022-12-31

Metadata

File identifier	b67d6289-bc0b-486b-b4ce-d08eb397d337 <a href="#">XML</a>		
Metadata language	English		
Character set	UTF8		
Hierarchy level	Series		
Date stamp	2024-03-22T14:14:32.840221Z		
Metadata standard name	ISO 19115:2003/19139		
Metadata standard version	1.0		
Metadata author	Organisation name	Individual name	Electronic mail addressWebsite Role
	European Environment Agency		sdi@eea.europa.euPoint of contact

Overviews





Provided by

