

Copernicus EEA39 Border Expert product (vector), version 3, Jan. 2019

For the provision of land monitoring services within the Copernicus programme, a consistent, stable, sufficiently detailed boundary layer is required at EEA, which provides a "land mask" for the area that needs to be monitored.

This metadata refers to the Border Expert product covering EEA38 and the United Kingdom (former EEA39) in vector format (GDB, SHP), including the French DOM (Saint-Barthelemy BL, Saint Martin MF, French Guiana GF, Guadeloupe GP, Martinique MQ, Mayotte YT and Reunion RE) as well as the Falkland Islands (FK).

This is an intermediate product which is further derived from the EU-Hydro Coastline Version 3 from EEA, the EEA coastline for analysis Version 2, the EBM GISCO Hybrid Layer from EEA, the "Water and Wetness High Resolution Layer 2015" from EEA and the JRC-Global Surface Water Occurrence layer.

The production of this Border Expert Product was coordinated by the European Environment Agency in the frame of the EU Copernicus programme.

IMPORTANT NOTE: This dataset is only available for internal use within EEA in the context of the EU Copernicus programme. Copyright restrictions apply, as in this product ungeneralised data from EuroGeographics EuroBoundary Map Version 12 is included. Use of this dataset has therefore to be agreed with EEA and ultimately with EuroGeographics.

Simple

Date (Creation)	2019-01-15		
Edition	03.00		
Citation identifier	eea_v_3035_100_k_copernicus-border-expert_i_2012-2018_v03_r00		
Point of contact	Organisation name	Individual name	Electronic mail address Role
	European Environment Agency		info@eea.eur info@eea.europa.eu Point of contact
	European Environment Agency		info@eea.eur info@eea.europa.eu Custodian
Maintenance and update frequency	As needed		
GEMET - INSPIRE themes, version 1.0	<ul style="list-style-type: none"> Administrative units 		
Keywords			
Keywords			
GEMET	<ul style="list-style-type: none"> administrative boundary coast national boundary 		
Continents, countries, sea regions of the world.	<ul style="list-style-type: none"> EEA38 (from 2020) United Kingdom 		
Spatial scope	<ul style="list-style-type: none"> European 		
	<ul style="list-style-type: none"> Land use 		

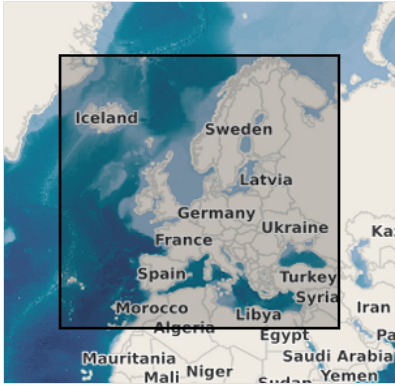
EEA topics	
	Other restrictions
Access constraints	public access limited according to Article 13(1)(e) of the INSPIRE Directive
Other constraints	Other restrictions
Use constraints	
Other constraints	INTELLECTUAL PROPERTY RIGHTS: The Commission (and EEA) is authorized to distribute derived geographic data and other derived products based on EuroGeographics Administrative and Topographic spatial datasets, if (1) The original geometry is generalised to the equivalent of a scale of 1:3000000 or smaller, applying the same quality principles in terms of resolution and accuracy as for the original geographic data or if the content of information in terms of number of features is less or equal to 20% of the number of features in the original geographic data (for the data extent relevant to the data to be distributed), (2) The data is not used for commercial purpose and, (3) The source is acknowledged. More information about the acknowledgement of the source or metadata is given in the document "LicenseConditions.pdf" provided with the dataset.
Spatial representation type	Vector
Denominator	100000
Language of dataset	English
Topic category	<ul style="list-style-type: none"> • Boundaries

N

S

E

W



Begin date

2012-01-01

End date

2018-01-20

N

S

E

W



N

S

E

W



N

S

E

W



N

S

E

W

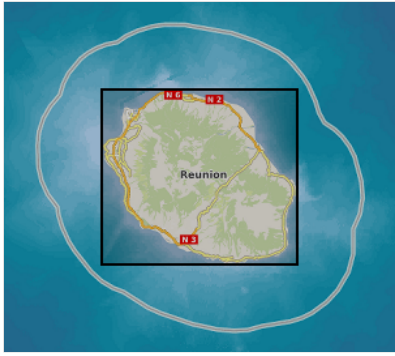


N

S

E

W



N

S

E

W

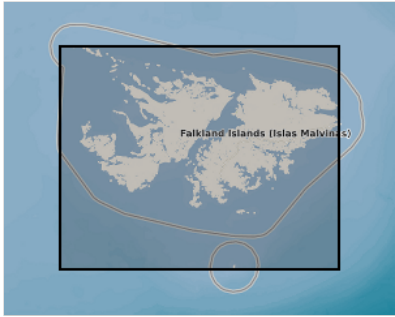


N

S

E

W



	N		S		E		W
--	---	--	---	--	---	--	---



CRS identifier	EPSG:3035
CRS identifier	EPSG:32740
CRS identifier	EPSG:32738
CRS identifier	EPSG:32620
CRS identifier	EPSG:32622
CRS identifier	EPSG:32721
Distribution format	<ul style="list-style-type: none"> GDB () SHP ()

OnLine resource

No information provided.

OnLine resource

No information provided.

Hierarchy level	Dataset
-----------------	---------

Conformance result

Date (Publication)	2010-12-08
Explanation	See the referenced specification

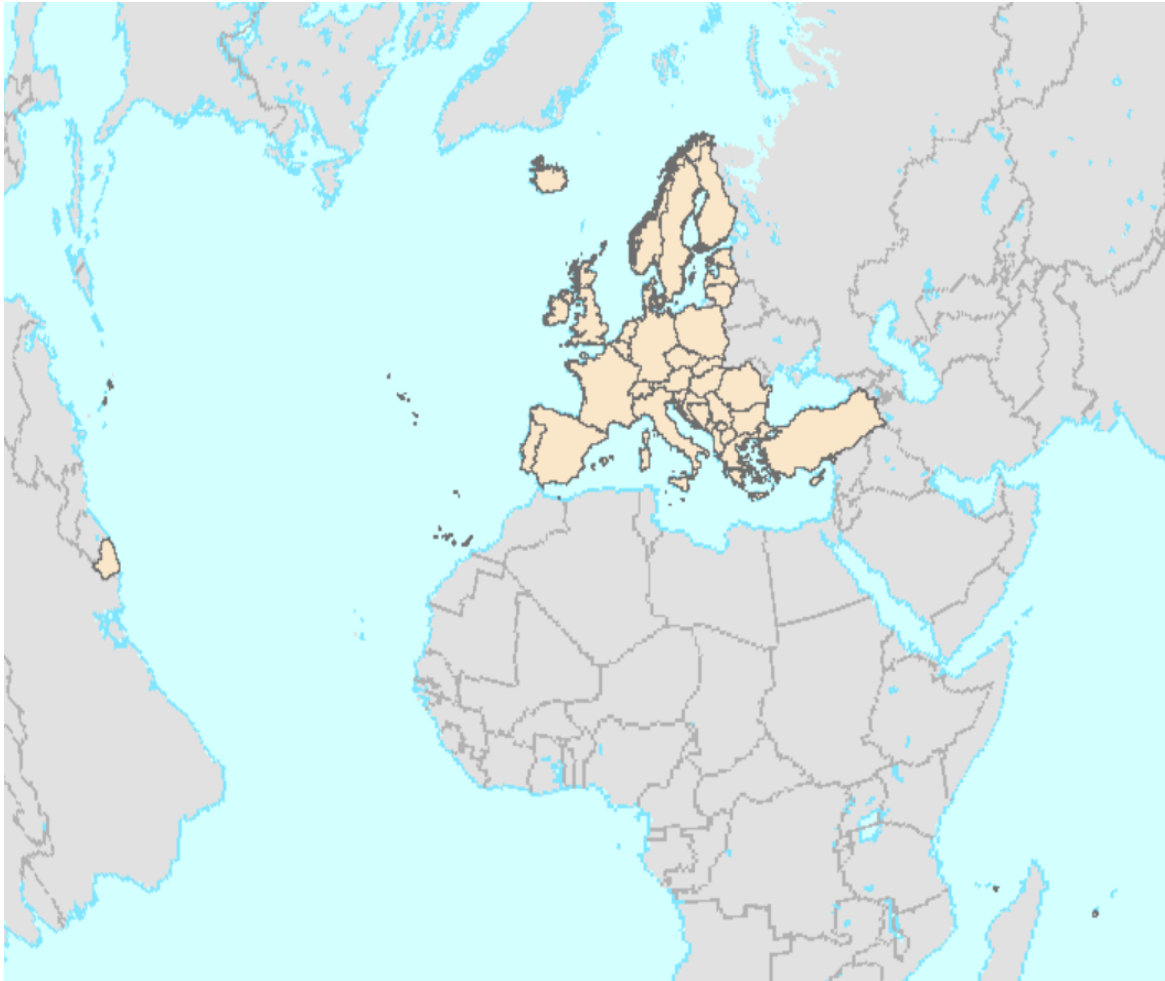
Statement	<p>The dataset is based on EU-Hydro Coastline Version 3 from EEA, the EEA coastline for analysis Version 2, the EBM GISCO Hybrid Layer from EEA, the EuroGeographics EuroBoundary Map Version 12, the "Water and Wetness High Resolution Layer 2015" from EEA and the JRC-Global Surface Water Occurrence layer.</p> <p>The production process is explained in the document provided with the dataset.</p>
Source	<ul style="list-style-type: none"> EEA coastline for analysis (raw) - version 2.0, Jun. 2015 EU-Hydro Coastal Line (vector), Jun. 2016 EuroBoundaryMap - version 12, Jan. 2018 High Resolution Layer: Water and Wetness 2015 (raster 20m), Mar. 2018

Metadata

File identifier	bda52886-fc81-44e0-8616-2fcd957af80 XML
Metadata language	English
Character set	UTF8
Hierarchy level	Dataset
Date stamp	2023-02-03T12:14:14.245Z

Metadata standard name	ISO 19115/19139		
Metadata standard version	1.0		
Metadata author	Organisation name	Individual name	Electronic mail address
	European Environment Agency		sdi@eea.europa.eu Point of contact

Overviews



Provided by

