

## pm25, European air quality data for 2021, (interpolated data), August 2023

The data set provides values for the human health related indicator of PM2.5 (annual average concentration) at 1 km2 grid combining monitoring air quality data in a 'regression-interpolation-merging mapping' methodology and the observational values of the air quality monitoring stations used in the interpolation. It covers Europe for the year 2021.

This data set is used to estimate population exposure to air pollution and for the health impact assessments published by the EEA (see, for example, Health impacts of air pollution in Europe, 2022 — European Environment Agency (europa.eu) at <https://www.eea.europa.eu/publications/air-quality-in-europe-2022/health-impacts-of-air-pollution>). The methodology and the corresponding maps can be found in the 2023 ETC HE report 2023/3 "Air quality maps of EEA member and cooperating countries for 2021. PM10, PM2.5, O3, NO2, NOx and BaP spatial estimates and their uncertainties" <https://www.eionet.europa.eu/etcs/etc-he/products/etc-he-products/etc-he-reports/etc-he-report-2023-3-air-quality-maps-of-eea-member-and-cooperating-countries-for-2021-pm10-pm2-5-o3-no2-nox-and-bap-spatial-estimates-and-their-uncertainties>.

### Simple

<b>Date (Creation)</b>	2023-08-21		
<b>Date (Publication)</b>	2023-08-21		
<b>Edition</b>	01.00		
<b>Citation identifier</b>	eea_r_3035_1_km_aq-interpolated-pm25_p_2021_v01_r00		
<b>Point of contact</b>	<b>Organisation name</b>	<b>Individual name</b>	<b>Electronic mail address</b> <b>Website</b> <b>Role</b>
	European Environment Agency		sdi@eea.europa.eu <a href="http://www.eea.europa.eu">http://www.eea.europa.eu</a> Point of contact
	European Environment Agency		sdi@eea.europa.eu Custodian

### Point of contact

No information provided.

<b>Maintenance and update frequency</b>	Annually
<b>GEMET - INSPIRE themes, version 1.0</b>	<ul style="list-style-type: none"> <li>• <a href="#">Atmospheric conditions</a></li> <li>• <a href="#">Environmental monitoring facilities</a></li> <li>• <a href="#">Human health and safety</a></li> </ul>
<b>Keywords</b>	
<b>Keywords</b>	
<b>GEMET</b>	<ul style="list-style-type: none"> <li>• traffic</li> <li>• troposphere</li> <li>• atmospheric composition</li> <li>• atmospheric pollution</li> <li>• atmospheric particulate</li> <li>• air quality monitoring</li> <li>• transboundary pollution</li> <li>• air quality</li> </ul>
<b>Continents, countries, sea regions of the world.</b>	<ul style="list-style-type: none"> <li>• EEA38 (from 2020)</li> </ul>

	<ul style="list-style-type: none"> <li>• San Marino</li> <li>• Monaco</li> <li>• Andorra</li> <li>• United Kingdom</li> </ul>
<b>Spatial scope</b>	<ul style="list-style-type: none"> <li>• European</li> </ul>
<b>INSPIRE priority data set</b>	<ul style="list-style-type: none"> <li>• Monitoring stations (Air Quality Directive)</li> <li>• Measurement and modelling data (Air Quality Directive)</li> <li>• Directive 2008/50/EC</li> </ul>
<b>EEA topics</b>	<ul style="list-style-type: none"> <li>• Air pollution</li> </ul>
<b>Temporal resolution</b>	<ul style="list-style-type: none"> <li>• Annually</li> </ul>
<b>Access constraints</b>	Other restrictions
<b>Other constraints</b>	<a href="#">no limitations to public access</a>
<b>Use constraints</b>	Other restrictions
<b>Other constraints</b>	EEA standard re-use policy: unless otherwise indicated, re-use of content on the EEA website for commercial or non-commercial purposes is permitted free of charge, provided that the source is acknowledged ( <a href="http://www.eea.europa.eu/legal/copyright">http://www.eea.europa.eu/legal/copyright</a> ). Copyright holder: European Environment Agency (EEA).
<b>Aggregate Dataset identifier</b>	282ed4e9-d58a-44ae-8c48-e688bdfed281
<b>Association Type</b>	Cross reference
<b>Spatial representation type</b>	Grid
<b>Spatial resolution</b>	
No information provided.	
<b>Distance</b>	1 1 km
<b>Language of dataset</b>	English
<b>Topic category</b>	<ul style="list-style-type: none"> <li>• Environment</li> </ul>

	N		S		E		W
--	---	--	---	--	---	--	---



<b>Begin date</b>	2021-01-01		
<b>End date</b>	2021-12-31		
<b>Coordinate reference system identifier</b>	<a href="#">EPSG:3035</a>		
<b>Distribution format</b>	<ul style="list-style-type: none"> <li>• GeoTIFF ( )</li> </ul>		
<b>OnLine resource</b>	<b>Protocol</b> EEA:FOLDERPATH  WWW:URL	<b>Linkage</b> <a href="https://sdi.eea.europa.eu/webdav/datastore/public/eea_r_3035_1_km_aq-interpolated-pm25_p_2021_v01_r00/">https://sdi.eea.europa.eu/webdav/datastore/public/eea_r_3035_1_km_aq-interpolated-pm25_p_2021_v01_r00/</a> <a href="https://sdi.eea.europa.eu/data/c0ca09a4-d9fe-4772-bc48-90cf31639442">https://sdi.eea.europa.eu/data/c0ca09a4-d9fe-4772-bc48-90cf31639442</a>	<b>Name</b>   Direct download

## OnLine resource

No information provided.

<b>Hierarchy level</b>	Dataset
------------------------	---------

## Conformance result

<b>Date (Publication)</b>	2010-12-08
<b>Explanation</b>	See the referenced specification

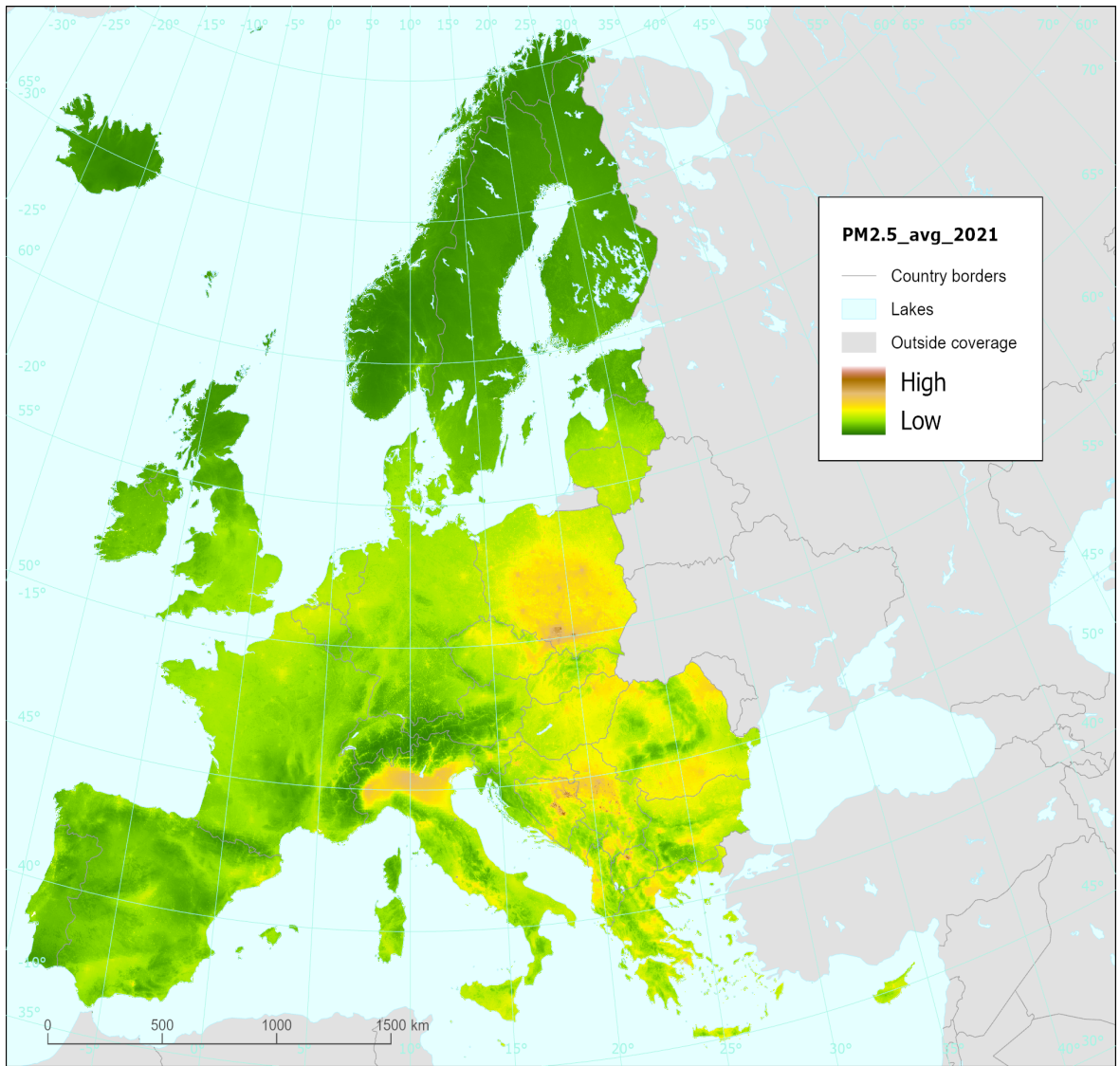
<b>Statement</b>	<p>The data set and corresponding maps are derived primarily from the e-reporting Air Quality database, consisting of monitoring stations data reported to EEA, and some additional EMEP (European Monitoring and Evaluation Programme) station monitoring data, supplemented with, among others, altitude, meteorological ECMWF data, EMEP concentration modelling data and satellite data. These data sets and the corresponding maps are assessment tools for use at the European scale. They may show results which differ from assessments made at national scale and should not be used to check formal compliance with regulated standards.</p> <p>The methodology and the corresponding maps can be found in the 2021 Eionet report "European air quality maps for 2019. PM10, PM2.5, Ozone, NO2 and NOx Spatial estimates and their uncertainties" (ETC/ATNI Report 1/2021) available at <a href="https://www.eionet.europa.eu/etcs/etc-atni/products/etc-atni-reports/etc-atni-report-1-2021-european-air-quality-maps-for-2019-pm10-pm2-5-ozone-no2-and-nox-spatial-estimates-and-their-uncertainties">https://www.eionet.europa.eu/etcs/etc-atni/products/etc-atni-reports/etc-atni-report-1-2021-european-air-quality-maps-for-2019-pm10-pm2-5-ozone-no2-and-nox-spatial-estimates-and-their-uncertainties</a> .</p>
------------------	---

## Metadata

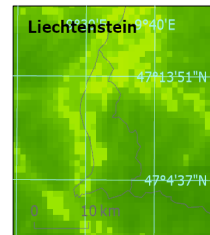
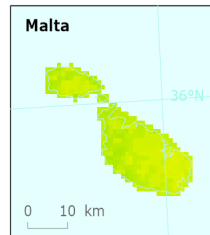
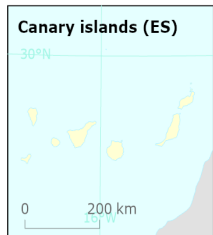
<b>File identifier</b>	c0ca09a4-d9fe-4772-bc48-90cf31639442 <a href="#">XML</a>
<b>Metadata language</b>	English
<b>Character set</b>	UTF8

<b>Hierarchy level</b>	Dataset		
<b>Date stamp</b>	2024-02-02T08:58:30.778Z		
<b>Metadata standard name</b>	ISO 19115/19139		
<b>Metadata standard version</b>	1.0		
<b>Metadata author</b>	<b>Organisation name</b>	<b>Individual name</b>	<b>Electronic mail address</b> <b>Website Role</b>
	European Environment Agency		sdi@eea.europa.eu Point of contact

## Overviews



Reference data: © EuroGeographics, © FAO (UN), © TurkStat Source: European Commission – Eurostat/GISCO



Provided by

