

EU-Hydro Coastal Line (vector), Jun. 2016

EU-Hydro is a dataset for all EEA39 countries providing photo-interpreted river network, consistent of surface interpretation of water bodies (lakes and wide rivers), and a drainage model (also called Drainage Network), derived from EU-DEM, with catchments and drainage lines and nodes. EU-Hydro Coastal Line is a separate layer extracted from EU-Hydro.

The production of EU-Hydro public beta and the derived layers was coordinated by the European Environment Agency in the frame of the EU Copernicus programme.

Simple

Date (Creation)	2016-06-02
Date (Publication)	2016-06-02
Edition	xx.xx
Citation identifier	copernicus_v_3035_50_k_hydro-cl_p_2006-2012_vxx_rxx
Status	Obsolete

Point of contact

No information provided.

Point of contact

No information provided.

Point of contact

No information provided.

Point of contact

No information provided.

Maintenance and update frequency	Continual
GEMET - INSPIRE themes, version 1.0	<ul style="list-style-type: none"> • Land cover • Hydrography
Keywords	
Continents, countries, sea regions of the world.	<ul style="list-style-type: none"> • EEA39
Keywords	
GEMET	<ul style="list-style-type: none"> • coastal area • drainage system • landscape alteration • hydrographic network
Spatial scope	<ul style="list-style-type: none"> • European

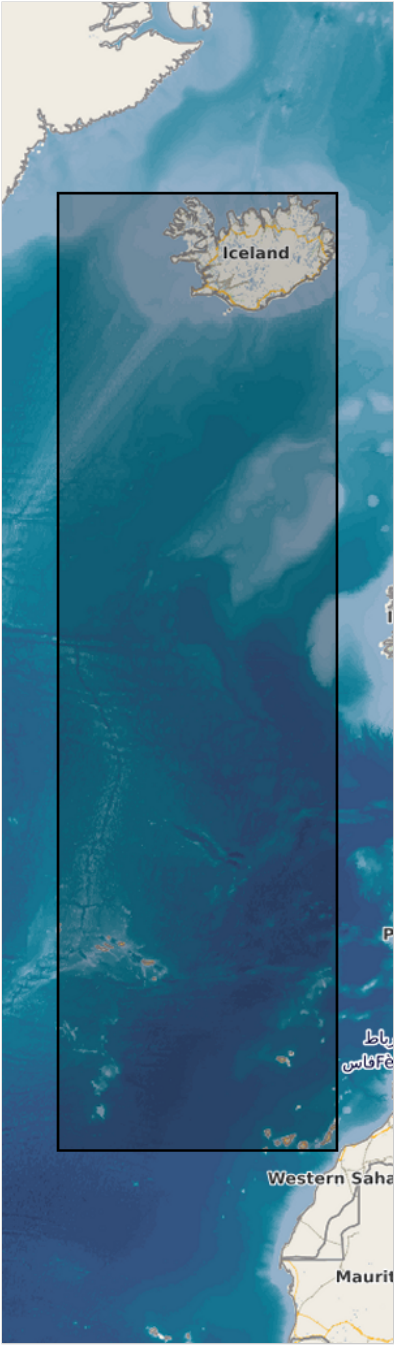
EEA topics	<ul style="list-style-type: none"> • Land use
Use limitation	<p>Access to data is based on a principle of full, open and free access as established by the Copernicus data and information policy Regulation (EU) No 1159/2013 of 12 July 2013. This regulation establishes registration and licensing conditions for GMES/Copernicus users.</p> <p>Free, full and open access to this data set is made on the conditions that:</p> <ol style="list-style-type: none"> 1. When distributing or communicating Copernicus dedicated data and Copernicus service information to the public, users shall inform the public of the source of that data and information. 2. Users shall make sure not to convey the impression to the public that the user's activities are officially endorsed by the Union. 3. Where that data or information has been adapted or modified, the user shall clearly state this. 4. The data remain the sole property of the European Union. Any information and data produced in the framework of the action shall be the sole property of the European Union. Any communication and publication by the beneficiary shall acknowledge that the data were produced "with funding by the European Union".
Access constraints	Other restrictions
Other constraints	no limitations to public access
Spatial representation type	Vector
Denominator	50000
Language of dataset	English
Character set	UTF8
Topic category	<ul style="list-style-type: none"> • Environment • Imagery base maps earth cover
Begin date	2006-01-01
End date	2012-12-31

N

S

E

W





CRS identifier	EPSG:3035
Distribution format	<ul style="list-style-type: none"> GDB (9.3)

Distributor

Ordering instructions	<p>This dataset is no longer accessible from the website of the Copernicus Land Monitoring Service. You can request access to this dataset by contacting the service desk of the Copernicus Land Monitoring Service at copernicus@eea.europa.eu. copernicus@eea.europa.eu</p> <p>This dataset is no longer accessible from the website of the Copernicus Land Monitoring Service. You can request access to this dataset by contacting the service desk of the Copernicus Land Monitoring Service at copernicus@eea.europa.eu.</p>
------------------------------	--

OnLine resource	Protocol	Linkage	Name
	ESRI:REST	https://image.discomap.eea.europa.eu/arcgis/rest/services/EUHydro/Coastal/MapServer	
	OGC:WMS	https://image.discomap.eea.europa.eu/arcgis/services/EUHydro/Coastal/MapServer/WMSServer?request=GetCapabilities&service=WMS	Coastal

Hierarchy level	Dataset
------------------------	---------

Conformance result

Date (Publication)	2010-12-08
Explanation	See the referenced specification

Statement	Space imagery SP05 (resolution 2.5 m) and SP06 (resolution 2.5 m), space imagery IMAGE2009 (resolution 20 m), EEA member countries WFD reporting data on water bodies: for Türkiye (EEA member), Albania, Bosnia-Herzegovina, FYROM, Montenegro, Kosovo (UNSCR 1244/99) and Serbia (all EEA cooperating countries) no spatial data for any category of water bodies was available, European Catchments and Rivers Network System (ECRINS); ancillary data: European Lakes and Reservoirs database (Eldred), Russian topographic maps.
------------------	---

Metadata

File identifier	da419ff3-5ae7-46a0-b0c0-ebf2d487f964 XML
Metadata language	English
Character set	UTF8
Hierarchy level	Dataset

Date stamp	2022-08-15T10:04:33.015Z		
Metadata standard name	ISO 19115/19139		
Metadata standard version	1.0		
Metadata author	Organisation name	Individual name	Electronic mail address Role
	European Environment Agency		sdi@eea.europa.eu Point of contact

Overviews



Provided by

