

Imperviousness

High Resolution Layer Imperviousness product at pan-European level captures the spatial distribution of artificially sealed areas including the level of sealing of the soil per area unit.

The product has a three years cycle and is available for the 2006, 2009, 2012, 2015 and 2018 reference years including change layers available for 2006-2009, 2009-2012, 2012-2015, 2015-2018, and in addition a change layer available for 2006-2012 and aligned with the CORINE Land Cover periodicity. For the 2018 reference year the product is complemented with the binary Impervious-Built up product, which also includes the aggregated Share of Built-up product showing the percentage of built-up areas across Europe.

High Resolution Layer Imperviousness product is part of the European Union's Copernicus Land Monitoring Service.

Simple

Date (Publication)	2020-08-28
Citation identifier	copernicus_hrl-imperviousness_s
Citation identifier	DAT-14-en

Point of contact

No information provided.

Continents, countries, sea regions of the world.	<ul style="list-style-type: none"> • EEA38 (from 2020) • United Kingdom • EEA39
EEA Management Plan	<ul style="list-style-type: none"> • 2018 3.6.1
Keywords	
Keywords	
EEA topics	<ul style="list-style-type: none"> • Buildings and construction • Land use • Soil
GEMET	<ul style="list-style-type: none"> • urban area • sealing • land cover • soil surface sealing • built-up area • land use • built environment • landscape alteration
GEMET - INSPIRE themes, version 1.0	<ul style="list-style-type: none"> • Land cover • Land use
Spatial scope	<ul style="list-style-type: none"> • European

Aggregate Datasetidentifier	e3284161-abef-4a2e-a291-cd8ce1cab54e
Association Type	Is composed of
Aggregate Datasetidentifier	f6628606-6552-4d3b-8d3a-df19f827ac56
Association Type	Is composed of
Aggregate Datasetidentifier	53eb2a55-4537-41ef-938f-603a52a5eb39
Association Type	Is composed of
Aggregate Datasetidentifier	b1ccb4c2-be13-416c-ac17-246b3b5219cf
Association Type	Is composed of
Aggregate Datasetidentifier	3eccb338-d7d4-43e5-be77-ac0b6afc9aa7
Association Type	Is composed of
Aggregate Datasetidentifier	454f6cd4-d7b2-4dfb-be9f-8ba1d667d69b
Association Type	Is composed of
Aggregate Datasetidentifier	3bf542bd-eebd-4d73-b53c-a0243f2ed862
Association Type	Is composed of
Aggregate Datasetidentifier	524fa72f-61d7-4364-801e-3e271d7b10bc
Association Type	Is composed of
Aggregate Datasetidentifier	d6152a22-cc3f-4353-8989-14528c0a713d
Association Type	Is composed of
Aggregate Datasetidentifier	bb32d49d-71ce-4a89-884a-e7e6fb118333
Association Type	Is composed of
Aggregate Datasetidentifier	62ab826c-9411-4dbf-b516-beb1db681830
Association Type	Is composed of
Aggregate Datasetidentifier	8b83d30f-4731-4de3-bead-1c6432d9d30a
Association Type	Is composed of
Aggregate Datasetidentifier	463f357e-6419-461b-9ed1-c38948a75f09
Association Type	Is composed of
Aggregate Datasetidentifier	c389689b-38b7-4e3d-bc7b-a403da0cac47
Association Type	Is composed of
Aggregate Datasetidentifier	899550c5-55fb-4291-87ad-6354b9b43e07
Association Type	Is composed of
Aggregate Datasetidentifier	73f0e3eb-ea21-4083-9b49-9c345c766775
Association Type	Is composed of

Aggregate Datasetidentifier	4023528f-430d-402b-be16-91b6a6487be6
Association Type	Is composed of
Aggregate Datasetidentifier	dd62f02d-a9e0-4e4f-906c-d5a913062deb
Association Type	Is composed of
Aggregate Datasetidentifier	61a2a6c8-9f9a-407d-a01d-d2101e9dcd65
Association Type	Is composed of
Aggregate Datasetidentifier	532f0b73-66c3-46f6-b5a5-d1cccd140433
Association Type	Is composed of
Aggregate Datasetidentifier	56b5c27b-ffaa-45c7-9b39-085dcbe725e4
Association Type	Is composed of
Aggregate Datasetidentifier	3de1ca12-d9a2-40bf-ae55-5c5026b8b90e
Association Type	Is composed of
Aggregate Datasetidentifier	9d131e52-0ce9-41a1-9a96-0310eb97c415
Association Type	Is composed of
Aggregate Datasetidentifier	bd1c6abc-a413-489a-91c7-e2690e01ff0e
Association Type	Is composed of
Aggregate Datasetidentifier	3e412def-a4e6-4413-98bb-42b571afd15e
Association Type	Is composed of
Aggregate Datasetidentifier	53eb2a55-4537-41ef-938f-603a52a5eb39
Association Type	Is composed of
Aggregate Datasetidentifier	17b26358-df10-4def-9991-fb395ce64933
Association Type	Is composed of
Spatial representation type	Grid
Language of dataset	English
Character set	UTF8
Topic category	<ul style="list-style-type: none"> • Environment • Imagery base maps earth cover

N

S

E

W

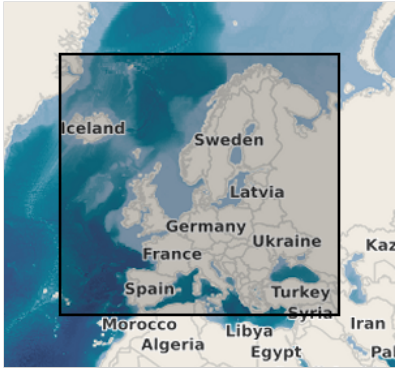


N

S

E

W

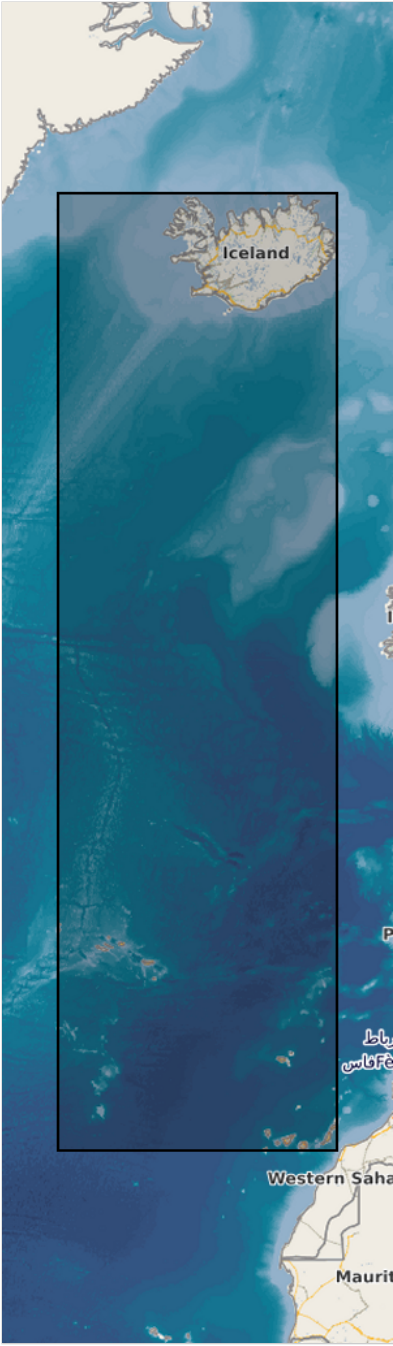


N

S

E

W



	N		S		E		W
--	---	--	---	--	---	--	---



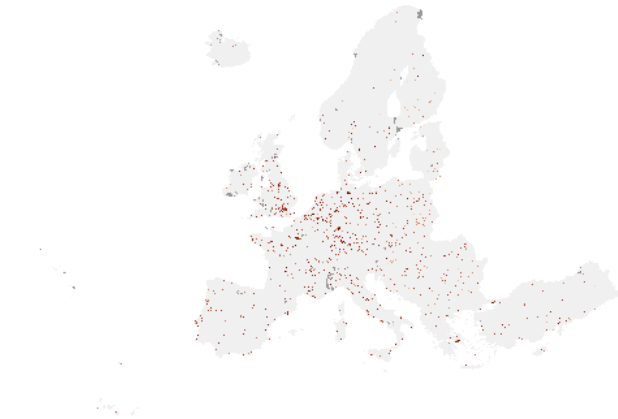
Begin date	2005-01-01
End date	2007-12-31
Begin date	2006-01-01
End date	2009-12-31
Begin date	2006-01-01
End date	2012-12-31
Begin date	2008-01-01
End date	2010-12-31
Begin date	2008-01-01
End date	2013-12-31
Begin date	2011-01-01
End date	2013-12-31
Begin date	2011-01-01
End date	2016-12-31
Begin date	2014-01-01
End date	2016-12-31
Begin date	2015-01-01
End date	2018-12-31
Begin date	2017-01-01
End date	2019-12-31

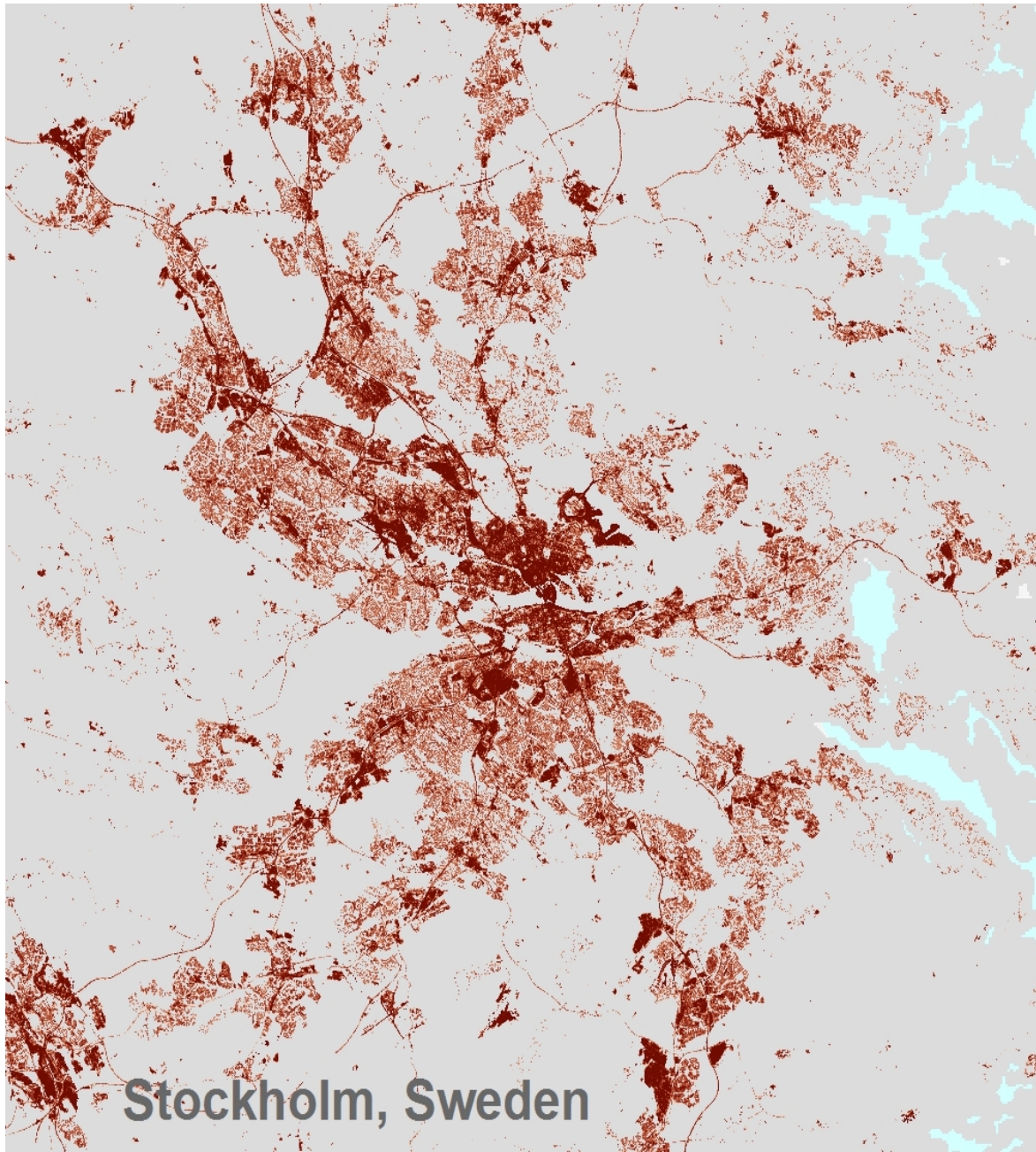
Metadata

File identifier	e613abf4-c655-4bd2-a5d4-7770dc32da9c XML
Metadata language	English
Character set	UTF8

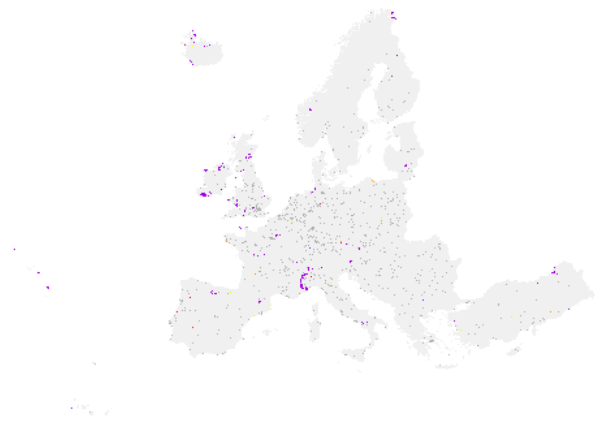
Hierarchy level	Series		
Date stamp	2024-02-14T12:17:59.935Z		
Metadata standard name	ISO 19115:2003/19139		
Metadata standard version	1.0		
Metadata author	Organisation name	Individual name	Electronic mail address Website Role
	European Environment Agency		sdi@eea.europa.eu Point of contact

Overviews



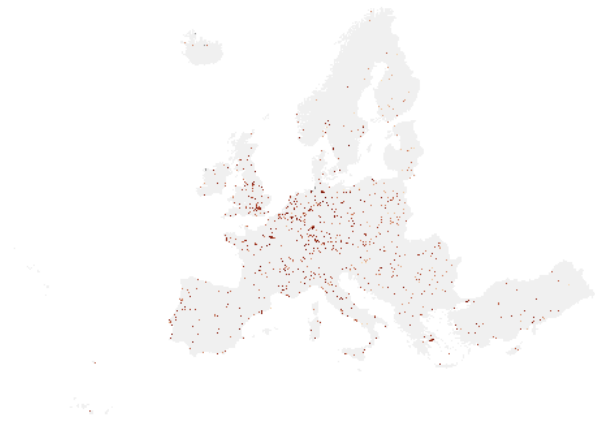
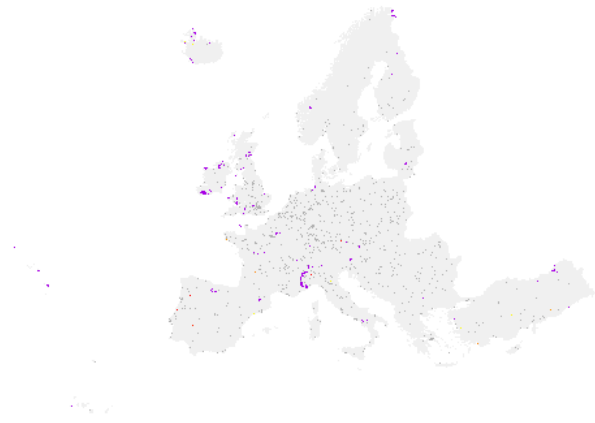


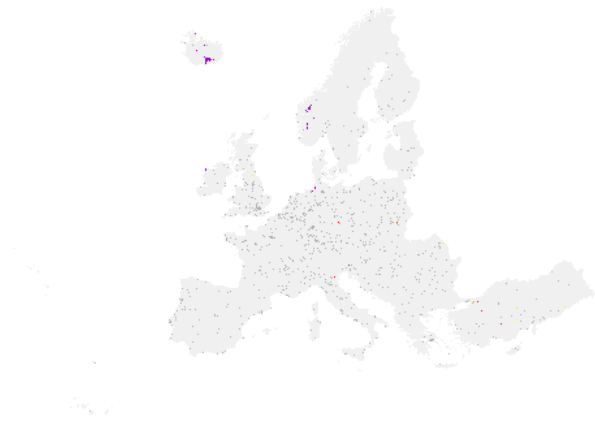
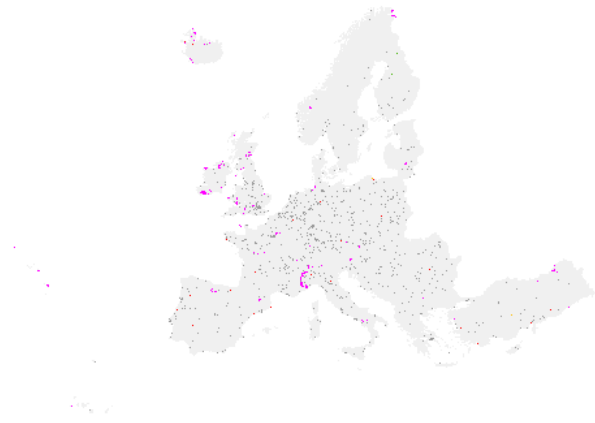
Stockholm, Sweden

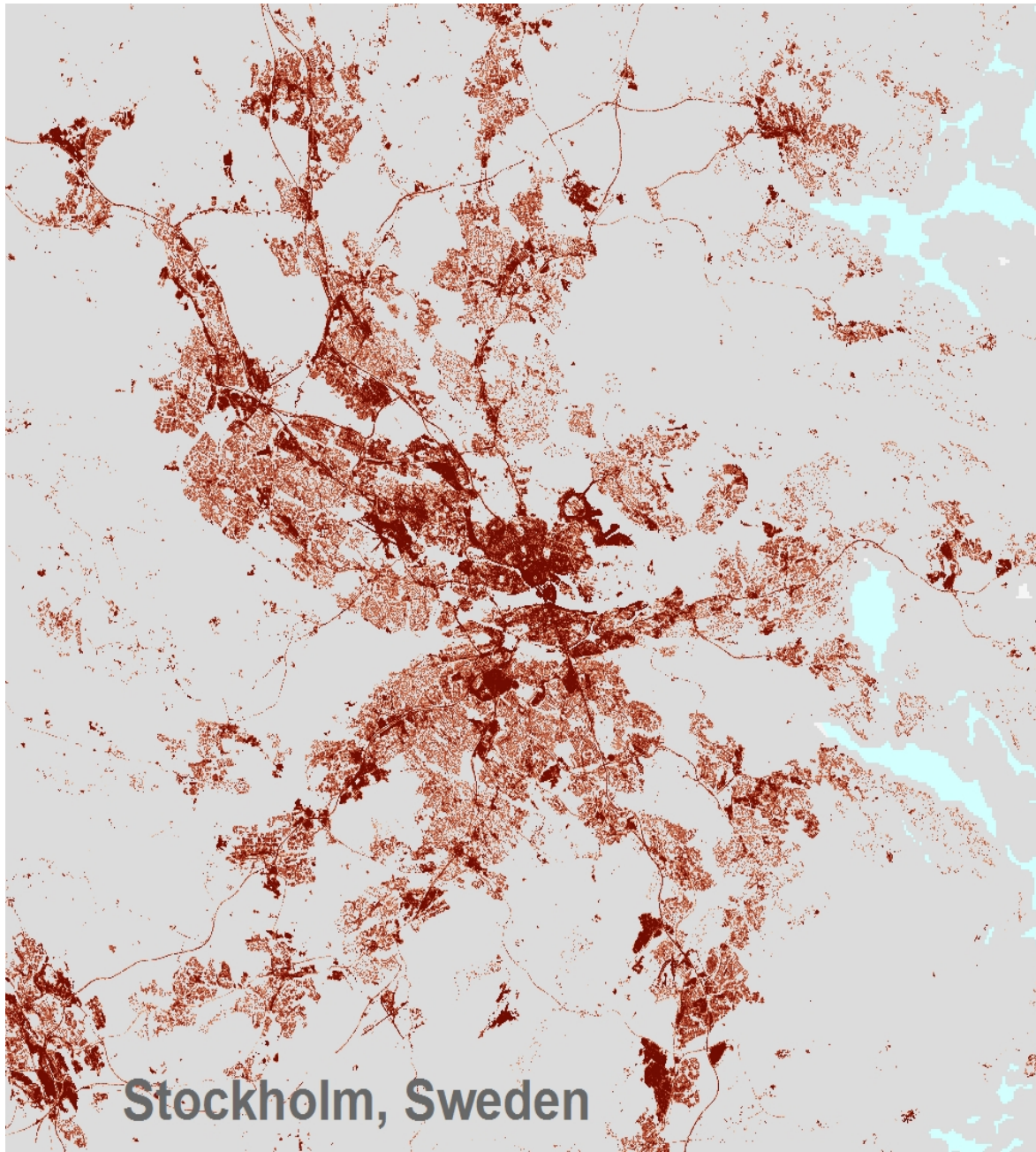




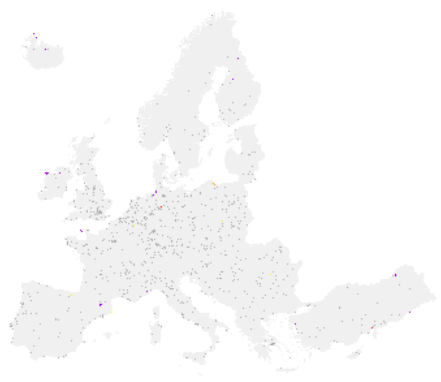
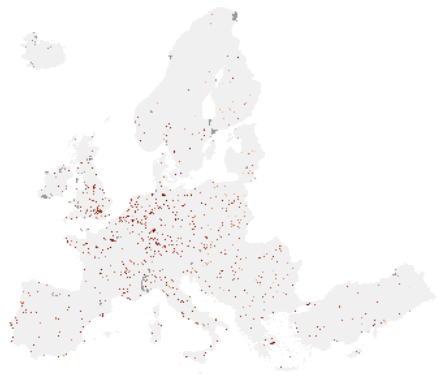
Stockholm, Sweden

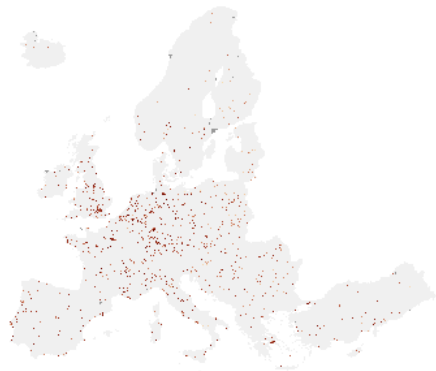
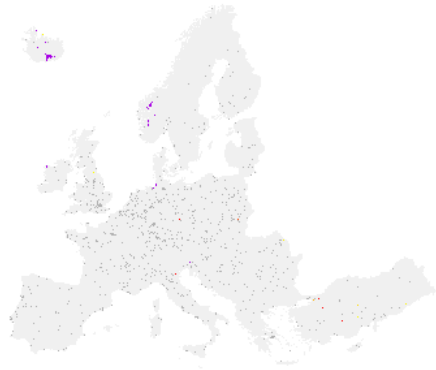


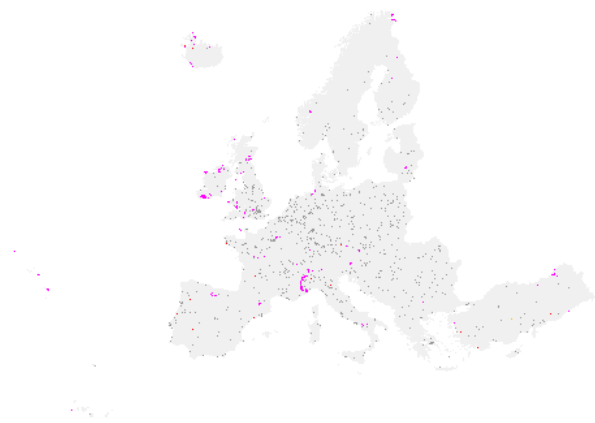




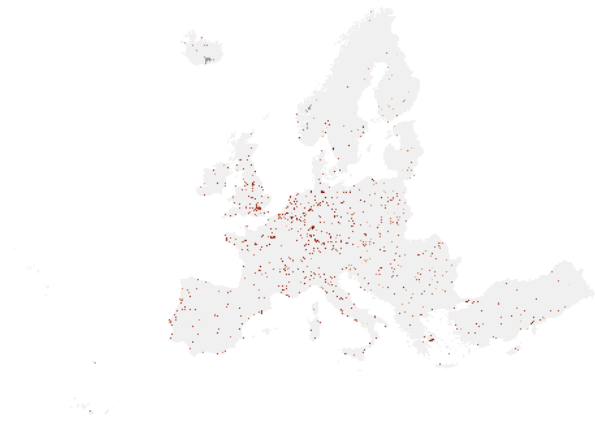
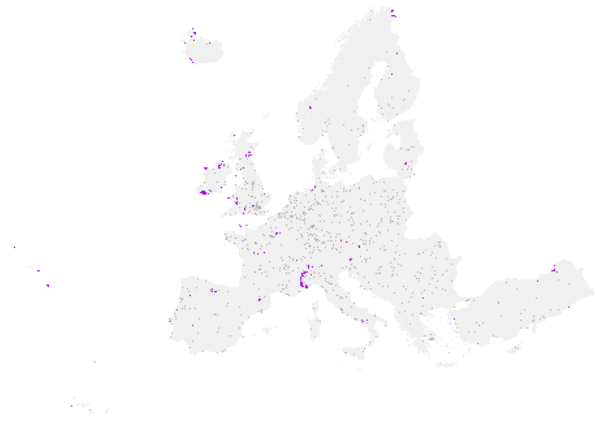
Stockholm, Sweden

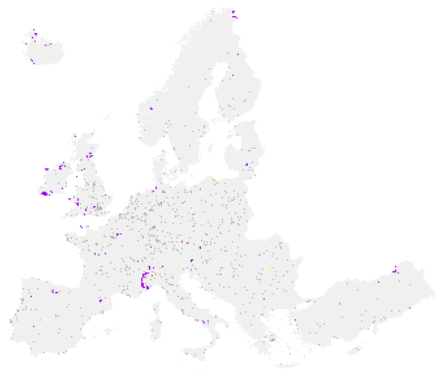
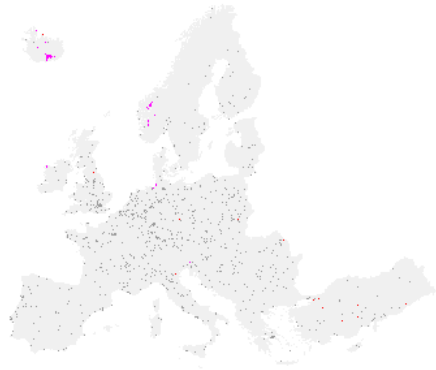


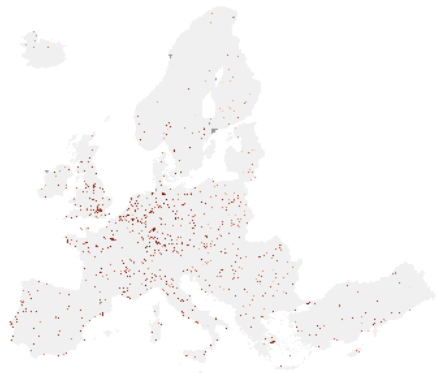
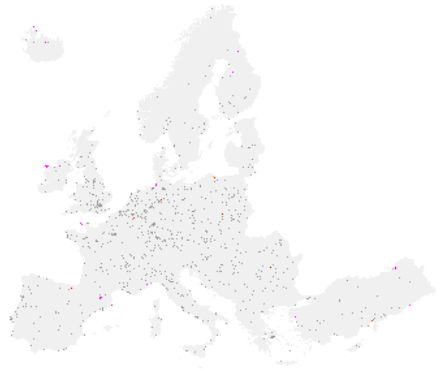


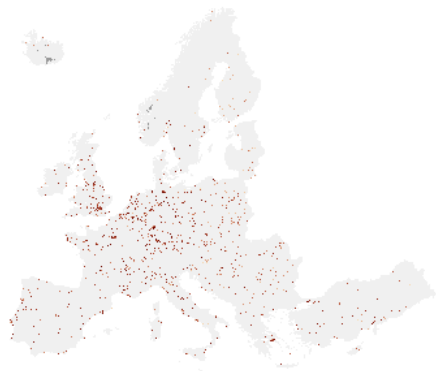
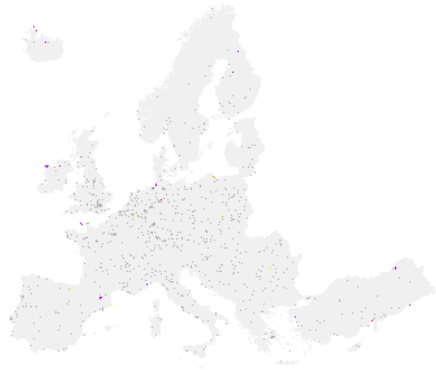


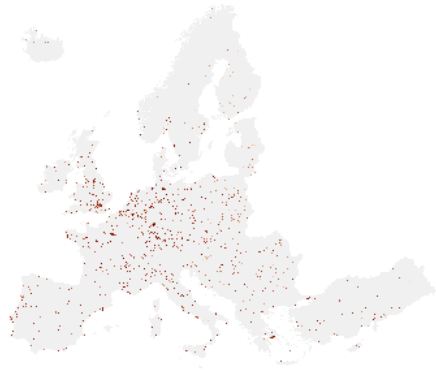


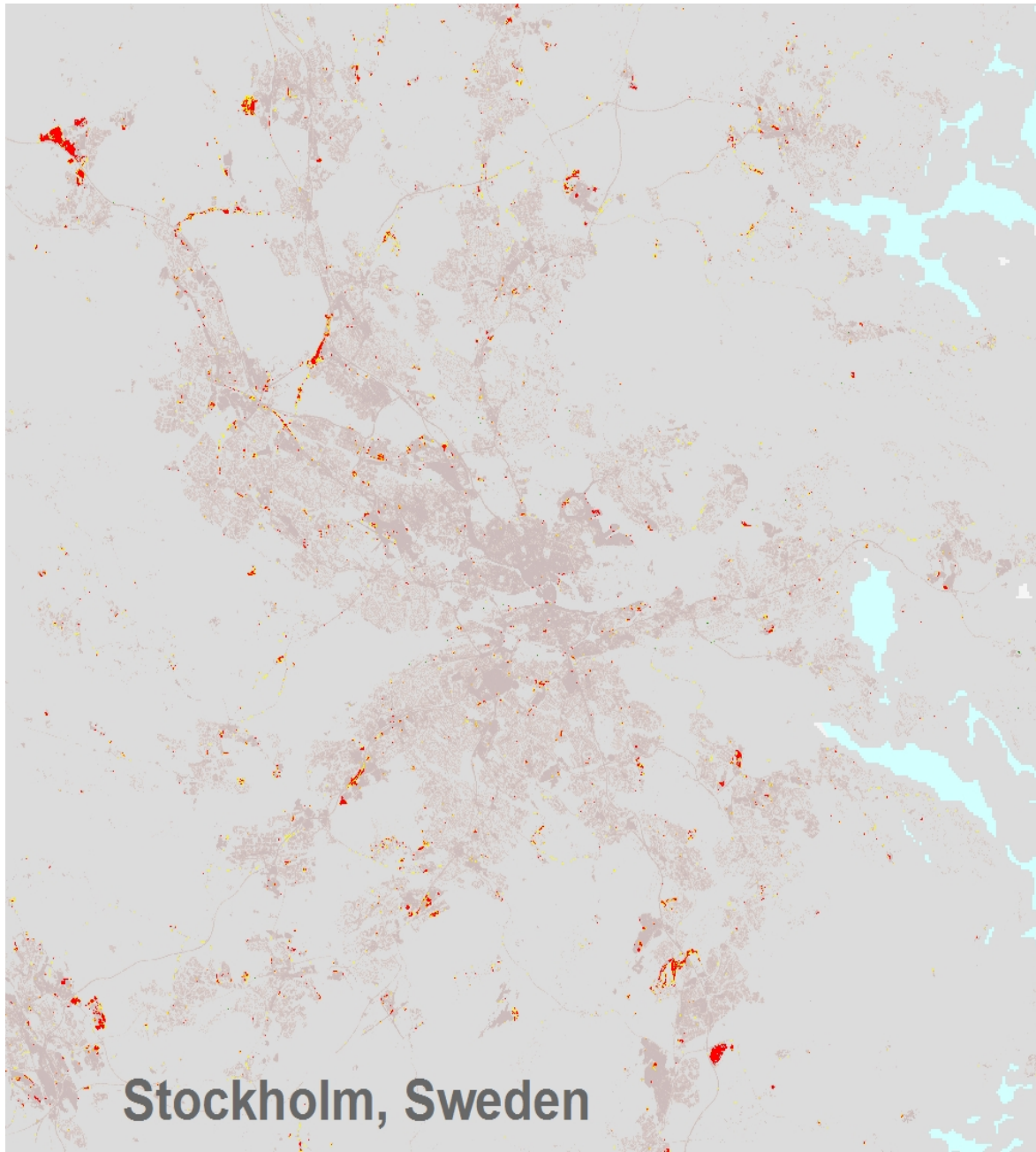


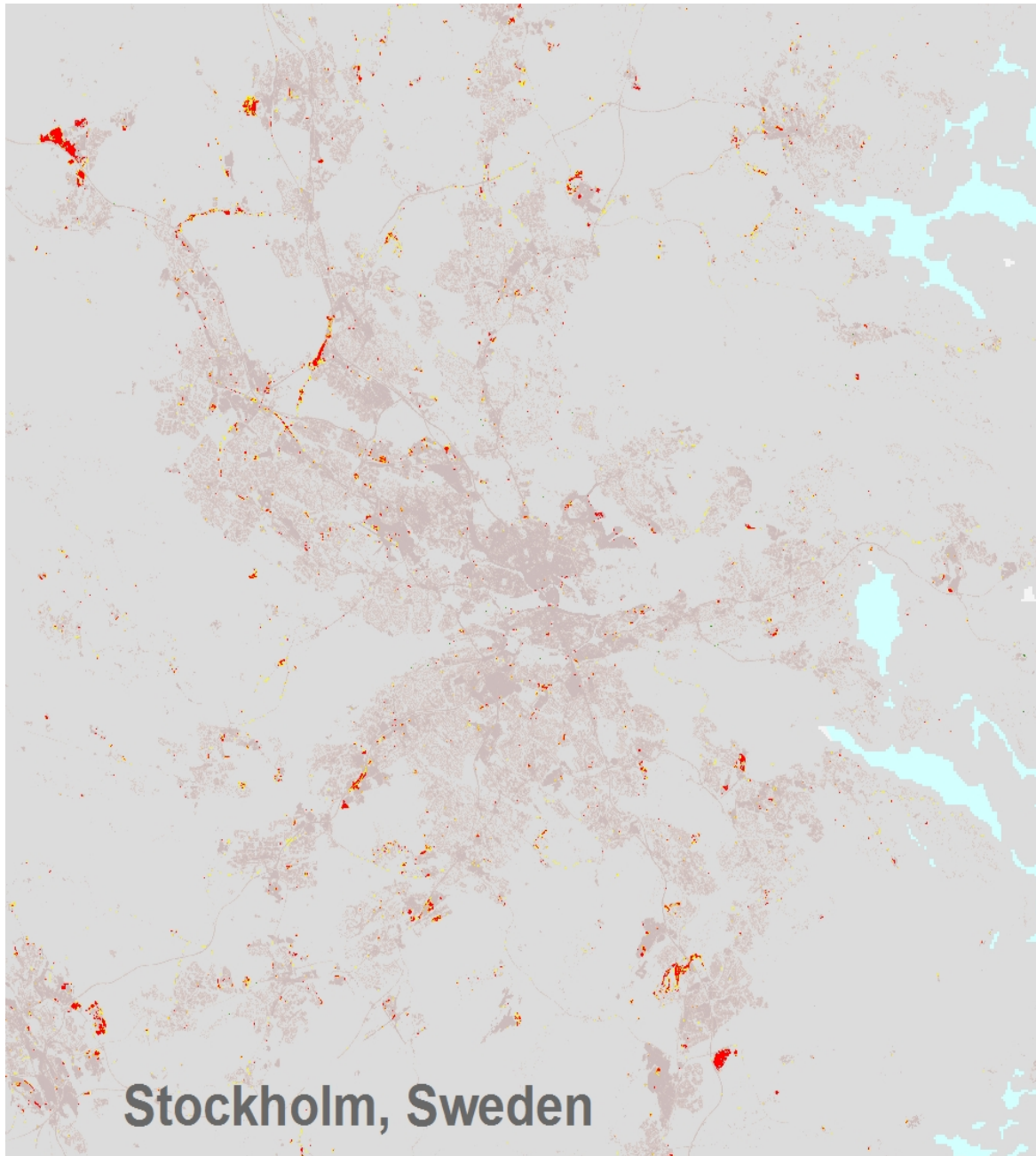












Provided by

