

Corine Land Cover 2018 (raster) in Eastern Partnership Countries (ENI CLC Pilot), Jun. 2020

This metadata describes the Corine Land Cover 2018 status layer dataset in raster format developed for the capital regions in five European Partnership countries (Armenia, Azerbaijan, Georgia, Republic of Moldova and Ukraine) under the ENI CLC (European Neighbourhood Initiative - Corine Land Cover) pilot project. This raster dataset was created following the methodology and rules of the European CLC project, namely computer assisted photointerpretation of satellite imagery, standard European level-3 nomenclature, 25 ha minimum mapping unit (MMU) for status layer, 5 ha MMU for change layer, minimum width of linear elements is 100 meters.

This pilot has been created in the context of the cooperation between the EEA and the six Eastern Partnership countries (Armenia, Azerbaijan, Belarus, Georgia, Republic of Moldova and Ukraine), which was implemented through the EU-funded regional project "Implementation of the Shared Environmental Information System principles and practices in the Eastern Partnership countries" (the ENI SEIS II East Project). The period of implementation of the ENI SEIS II East project was 48 months, 1 February 2016 - 31 January 2020 (extended until 30 June 2020). The Republic of Belarus did not express an interest to participate but was regularly kept informed on the process and has full access to all the results.

Additional information about CLC product description including mapping guides as well as the corresponding CLC class descriptions can be found at the Copernicus Land website and the metadata of the relevant Corine Land Cover layers.

Simple

Date (Creation)	2016-02-01				
Date (Publication)	2020-06-22				
Edition	01.00				
Citation identifier	eea_r_3035_100_m_eni-clc-2018_p_2017-2019_v01_r00				
Point of contact	Organisation name	Individual name	Electronic mail address	Website	Role
	European Environment Agency		copernicus@eea.europa.eu	https://land.copernicus.eu	Distributor
	European Environment Agency		copernicus@eea.europa.eu	https://land.copernicus.eu	Custodian
	European Environment Agency		copernicus@eea.europa.eu	https://land.copernicus.eu	Point of contact
Maintenance and update frequency	Not planned				
GEMET - INSPIRE themes, version 1.0	<ul style="list-style-type: none"> Land use Land cover 				
Keywords					
Continents, countries, sea regions of the world.	<ul style="list-style-type: none"> Moldova Georgia Ukraine Azerbaijan Armenia 				
Keywords					
GEMET	<ul style="list-style-type: none"> land use landscape landscape alteration 				

	<ul style="list-style-type: none"> • land cover • land
Spatial scope	<ul style="list-style-type: none"> • European
EEA topics	<ul style="list-style-type: none"> • Land use • Water
Access constraints	Other restrictions
Other constraints	no limitations to public access
Use constraints	Other restrictions
Other constraints	<p>Access to data is based on a principle of full, open and free access as established by the Copernicus data and information policy Regulation (EU) No 1159/2013 of 12 July 2013. This regulation establishes registration and licensing conditions for GMES/Copernicus users.</p> <p>Free, full and open access to this data set is made on the conditions that:</p> <ol style="list-style-type: none"> 1. When distributing or communicating Copernicus dedicated data and Copernicus service information to the public, users shall inform the public of the source of that data and information. 2. Users shall make sure not to convey the impression to the public that the user's activities are officially endorsed by the Union. 3. Where that data or information has been adapted or modified, the user shall clearly state this. 4. The data remain the sole property of the European Union. Any information and data produced in the framework of the action shall be the sole property of the European Union. Any communication and publication by the beneficiary shall acknowledge that the data were produced "with funding by the European Union".
Spatial representation type	Grid
Distance	100 m
Language of dataset	English
Character set	UTF8
Topic category	<ul style="list-style-type: none"> • Environment • Imagery base maps earth cover

N

S

E

W



Begin date	2017-01-01
End date	2019-12-31

N

S

E

W

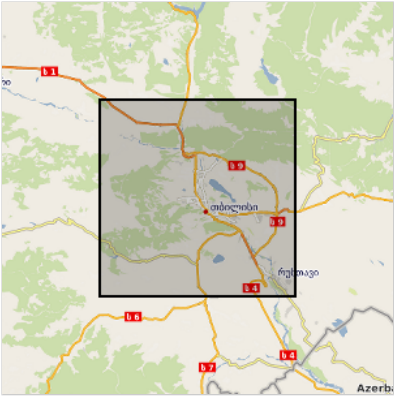


	N
--	---

	S
--	---

	E
--	---

	W
--	---



N

S

E

W



	N		S		E		W
--	---	--	---	--	---	--	---



Coordinate reference system identifier	EPSG:3035		
Distribution format	<ul style="list-style-type: none"> • Geopackage () • GeoTIFF () 		
OnLine resource	Protocol EEA:FOLDERPATH EEA:FOLDERPATH ESRI:REST OGC:WMS WWW:URL	Linkage https://sdi.eea.europa.eu/webdav/datastore/public/eea_r_3035_100_m_eni-clc-2018_p_2017-2019_v01_r00/TIFF/ https://sdi.eea.europa.eu/webdav/datastore/public/eea_r_3035_100_m_eni-clc-2018_p_2017-2019_v01_r00/GPKG/ https://image.discomap.eea.europa.eu/arcgis/rest/services/ENI_CLC_Pilot/ENI_CLC_Pilot_2018_WM/MapServer https://image.discomap.eea.europa.eu/arcgis/services/ENI_CLC_Pilot/ENI_CLC_Pilot_2018_WM/MapServer/WMServer?request=GetCapabilities&service=WMS https://sdi.eea.europa.eu/data/e640a22b-8dde-423e-b051-991bcb383f2f	Name Geo TIFF Geo package ESRI Rest service WMS Web Map Service Direct download
Hierarchy level	Dataset		

Conformance result

Date (Publication)	2010-12-08
Explanation	See the referenced specification

Statement	<p>This dataset was created following the methodology and rules of the European CLC project: Computer assisted photointerpretation of satellite imagery, standard European level-3 nomenclature, 25 ha minimum mapping unit (MMU) for status layer, 5 ha MMU for change layer, minimum width of linear elements is 100 meters. The pilot included mapping the recent status layer (CLC2018), a CLC Change layer between the 2000s' and 2018 and the back-dated status layer for the 2000s'. Sentinel-2 imagery was available for 2018, and Landsat TM/ETM data for the 2000s'.</p> <p>Additional information about CLC product description including mapping guides as well as the corresponding CLC class descriptions can be found at the Copernicus Land website and the metadata of the relevant Corine Land Cover layers.</p> <p>The ENI SEIS II East project built on the regional EU-funded project 'Towards a Shared Environmental Information System (SEIS) in the European Neighbourhood (ENPI-SEIS executed in the period December 2009 - March 2015), also implemented by the European Environment Agency (EEA). The project supported the environmental and statistical authorities in the six Eastern Partnership countries in gradually developing and extending their national environmental information systems in line with the SEIS principles in terms of institutional cooperation, content and infrastructure.</p> <p>The second phase of SEIS cooperation through the ENI SEIS II East project(https://eni-seis.eionet.europa.eu/east) aimed to help the countries find solutions to better respond to regional/ international commitments related to environmental reporting; to improve their capacities to manage and use environmental statistics, data and information in support to decision-making; and prepare regular State of the Environment Reports (SoER) and indicator-based assessments. At national level, the project was coordinated by two National Focal Points (NFP), representing the Ministry of Environment and the National Bureau of Statistics.</p>
-----------	--

This dataset is a direct output from the activity 2.3 of the ENI SEIS II East Description of Action (<https://eni-seis.eionet.europa.eu/east/governance/project-documents>) "Pilots on extending CORINE Land Cover (CLC) methodology to areas of the partner countries", which was a step to facilitate the access to, and use of, some spatial data required for SEIS implementation at national level. This activity also allowed direct links to related initiatives and programmes at the European level; namely the just completed work to produce the 2018 update of the CLC layers in the EEA38 member countries and United Kingdom, and services provided through the Copernicus Programme. The pilot included mapping the recent status layer (CLC2018), a CLC Change layer between the 2000s' and 2018 and the back-dated status layer for the 2000s. Sentinel-2 imagery was available for 2018, and Landsat TM/ETM data for the 2000s.

The European Topic Centre on Urban, Land and Soil Systems (ETC/ULS) assisted the EEA for the implementation of Activity 2.3 of the ENI SEIS II East. Experts from the ETC/ULS have conducted feasibility missions to propose technical partner institutions in each partner countries, provided training courses and quality control for each of the CLC pilot projects.

CLC and CLC Change layers have been developed for the capital regions in five ENI countries with size around 2500 km2.

In Armenia first the CLC2018 status layer was produced, then CLC Changes between 2000 and 2018 have been mapped and finally the CLC2000 layer has been computed.

In Azerbaijan first the CLC2018 status layer was produced, then CLC Changes between 2000 and 2018 have been mapped and finally the CLC2000 layer has been computed.

In Georgia first the CLC2018 status layer was produced, then CLC Changes between 2001 and 2017 have been mapped and finally the CLC2000 layer has been computed.

In Ukraine first the CLC2018 status layer was produced, then CLC Changes between 2005 and 2018 have been mapped and finally the CLC2006 layer has been computed.

In Moldova, as an exception the existing CLC2000 layer has been revised and CLC changes between 2000 and 2018 have been mapped and finally the CLC2018 layer has been computed.

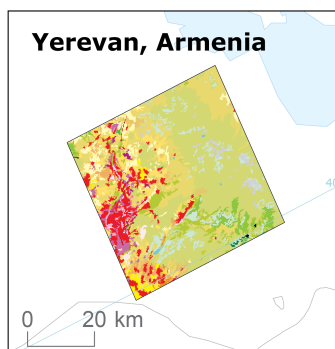
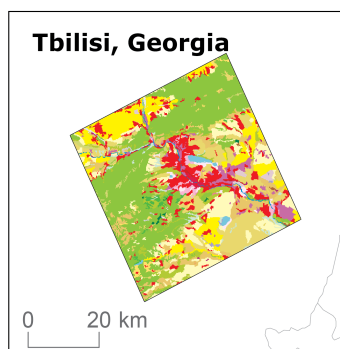
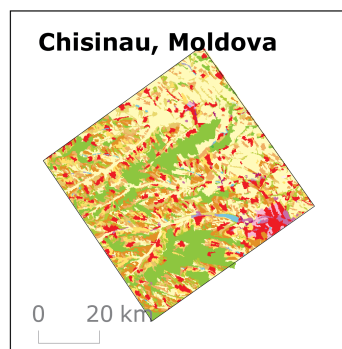
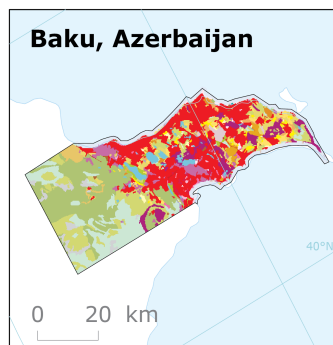
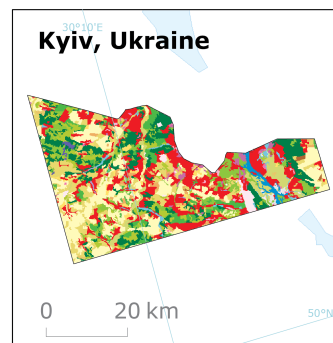
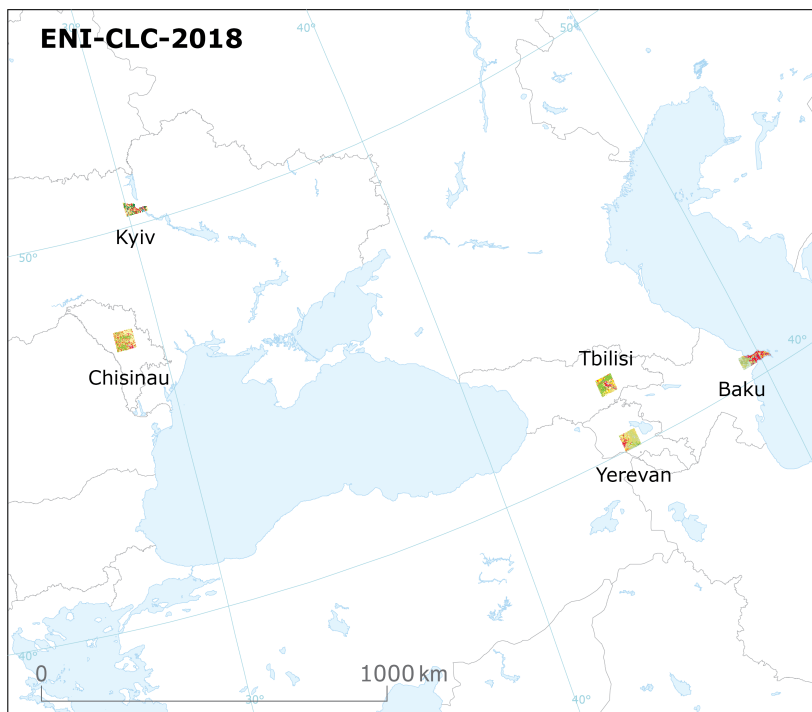
Before publishing ENI CLC results on the Copernicus portal, data underwent on the standard technical quality control of EEA.

For the sake of simplicity all the five CLC layers referring to years 2000-2005 are considered as CLC2000.

Metadata

File identifier	e640a22b-8dde-423e-b051-991bcb383f2f XML		
Metadata language	English		
Character set	UTF8		
Hierarchy level	Dataset		
Date stamp	2023-01-24T12:00:50.882Z		
Metadata standard name	ISO 19115/19139		
Metadata standard version	1.0		
Metadata author	Organisation name	Individual name	Electronic mail address Website Role
	European Environment Agency		sdi@eea.europa.eu Point of contact

Overviews



Reference data: © EuroGeographics, © FAO (UN), © TurkStat Source: European Commission – Eurostat/GISCO

Provided by

