

Potential quiet areas in Europe, based upon Quietness Suitability Index (QSI), Aug. 2016

Within the European Union, the Environmental Noise Directive (END, 2002/49/EC) defines quiet areas outside cities as those areas delimited by national authorities that are undisturbed by noise from traffic, industry or recreational activities. The report 'Quiet areas in Europe: the environment unaffected by noise pollution,' provides a first mapping assessment of potential quiet areas in Europe's rural regions. Approximately 18% of Europe's area can be considered quiet, but 33% is potentially affected by noise pollution, the report finds. This dataset underpins the assessment and is based on the quietness suitability index (QSI), which provides the overview with the highest (QSI=1) and lowest (QSI=0) proportion of potential quiet areas in Europe. The data set is provided in both GDB and TIFF formats.

Simple

Date (Creation)	2016-03-11		
Date (Publication)	2016-08-25		
Edition	01.00		
Citation identifier	eea_r_3035_100_m_quietareas-qi_p_2016_v01_r00		
Citation identifier	DAT-210-en		
Citation identifier	DAT-209-en		
Point of contact	Organisation name	Individual name	Electronic mail address Website Role
	European Environment Agency		sdi@eea.europa.eu http://www.eea.europa.eu Point of contact
	European Environment Agency		sdi@eea.europa.eu http://www.eea.europa.eu Custodian
Maintenance and update frequency	Not planned		
EEA topics	<ul style="list-style-type: none"> Environmental health impacts 		
GEMET - INSPIRE themes, version 1.0	<ul style="list-style-type: none"> Area management/restriction/regulation zones and reporting units 		
Keywords			
Keywords			
GEMET	<ul style="list-style-type: none"> noise type noise, vibrations noise 		
Continents, countries, sea regions of the world.	<ul style="list-style-type: none"> EEA33 (2013-2020) 		
Spatial scope	<ul style="list-style-type: none"> European 		
EEA Management Plan	<ul style="list-style-type: none"> 2016 1.1.1 		
Use limitation	EEA standard re-use policy: unless otherwise indicated, re-use of content on the EEA website for commercial or non-commercial purposes is permitted free of charge, provided that the source is acknowledged (http://www.eea.europa.eu/legal/copyright). Copyright holder: European Environment Agency (EEA).		

Access constraints	Other restrictions
Other constraints	no limitations to public access
Spatial representation type	Grid
Distance	100 100 m
Language of dataset	English
Topic category	<ul style="list-style-type: none">• Environment



Begin date	2016-01-01		
End date	2016-12-31		
Coordinate reference system identifier	EPSG:3035		
Distribution format	<ul style="list-style-type: none"> • GDB (1.0) • GeoTIFF () 		
OnLine resource	Protocol	Linkage	Name
	EAA:FOLDERPATH	https://sdi.eea.europa.eu/webdav/datastore/public/eea_r_3035_100_m_quietareas-qi_p_2016_v01_r00	QuietAreas_GDB
	EAA:FOLDERPATH	https://sdi.eea.europa.eu/webdav/datastore/public/eea_r_3035_100_m_quietareas-qi_p_2016_v01_r00	QuietAreas_TIF
	WWW:URL	https://sdi.eea.europa.eu/data/e9151c34-da65-48b9-a2ca-b9b835480812	Direct download
Hierarchy level	Dataset		

Conformance result

Date (Publication)	2010-12-08
Explanation	See the referenced specification

Statement	<p>Suitable distance layer from noise sources built following a fuzzy approach (*), calculating the 'membership' to the quietness range (0–1) by means of a linear relationship, considering the mean value obtained as no suitable (= 0) and maximum distance obtained as suitable (= 1). The distance values between not suitable (mean value) and suitable (maximum value) will be reassigned with a new value between 0 and 1 following a linear equation.</p> <p>(*) The production of threshold distance layers around noise sources has been made following a fuzzy approach rather than obtaining a buffer with sharp limits. Membership to a 0-1 range has been obtained according to a linear function.</p> <p>Data sources:</p> <ul style="list-style-type: none"> - END: major roads, major railways and major airports noise contour maps (2012) - END: location of major roads and major railways and major airports - Urban morphological zones (UMZ) from CLC 2006
------------------	---

- E-PRTR register: industries' location and attributes: Europe-wide register that provides easily accessible key environmental data from industrial facilities in European Union Member States and in Iceland, Liechtenstein, Norway, Serbia and Switzerland. It replaced and improved upon the previous European Pollutant Emission Register (EPER). Access 2014.

- Corine Land Cover and Land Use data 2006 (CLC) (100 x 100 m grid)

- Corine Land Cover 2000 for Greece

- EuroRegionalMap v. 6.0: roads, railways and airports infrastructure. (Version 6.0, 18.12.2012)

- The population of each UMZ in 2000 (year of reference) was added by using the last version (v. 5) of the population density grid constructed by the European Commission research centre (Gallego, 2010). Raster data on population density using Corine Land Cover 2000 inventory.

Full methodology: Good practice guide on quiet areas. Technical report No 4/2014

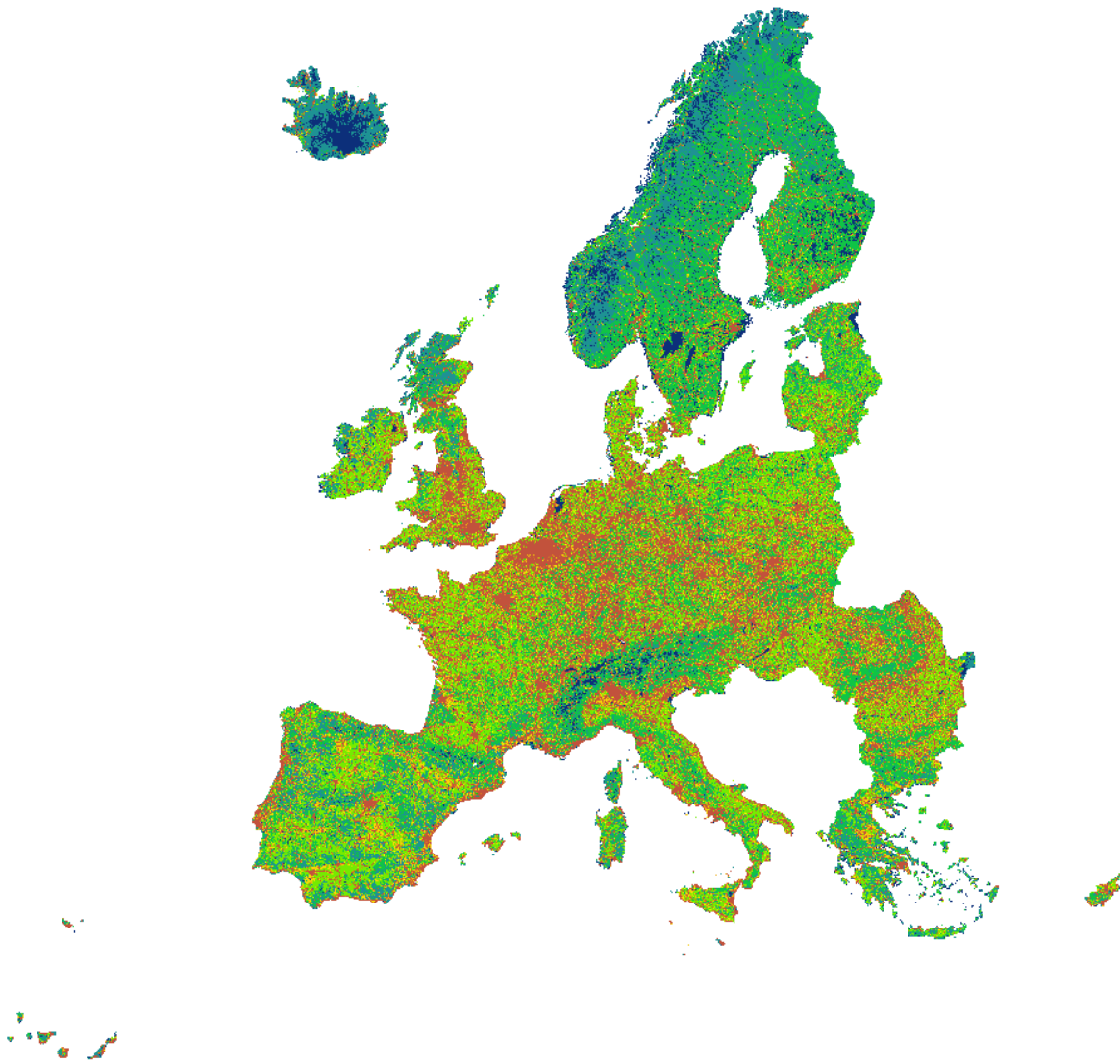
<http://www.eea.europa.eu/publications/good-practice-guide-on-quiet-areas>

Source	•
---------------	---

Metadata

File identifier	e9151c34-da65-48b9-a2ca-b9b835480812 XML		
Metadata language	English		
Character set	UTF8		
Hierarchy level	Dataset		
Date stamp	2020-12-02T14:10:01		
Metadata standard name	ISO 19115/19139		
Metadata standard version	1.0		
Metadata author	Organisation name	Individual name	Electronic mail address Website Role
	European Environment Agency		sdi@eea.europa.eu Point of contact

Overviews



Provided by

