

## Potential quiet areas in Europe, based upon Quietness Suitability Index (QSI), Aug. 2016

Within the European Union, the Environmental Noise Directive (END, 2002/49/EC) defines quiet areas outside cities as those areas delimited by national authorities that are undisturbed by noise from traffic, industry or recreational activities. The report 'Quiet areas in Europe: the environment unaffected by noise pollution,' provides a first mapping assessment of potential quiet areas in Europe's rural regions. Approximately 18% of Europe's area can be considered quiet, but 33% is potentially affected by noise pollution, the report finds. This dataset underpins the assessment and is based on the quietness suitability index (QSI), which provides the overview with the highest (QSI=1) and lowest (QSI=0) proportion of potential quiet areas in Europe. The data set is provided in both GDB and TIFF formats.

### Simple

<b>Date (Creation)</b>	2016-03-11		
<b>Date (Publication)</b>	2016-08-25		
<b>Edition</b>	01.00		
<b>Citation identifier</b>	eea_r_3035_100_m_quietareas-qi_p_2016_v01_r00		
<b>Citation identifier</b>	DAT-210-en		
<b>Citation identifier</b>	DAT-209-en		
<b>Point of contact</b>	<b>Organisation name</b>	<b>Individual name</b>	<b>Electronic mail address</b> <b>Role</b>
	European Environment Agency		info@eea.eur info@eea.europa.eu      Point of contact
	European Environment Agency		info@eea.eur info@eea.europa.eu      Custodian
<b>Maintenance and update frequency</b>	Not planned		
<a href="#">EEA topics</a>	<ul style="list-style-type: none"> <li>• Environmental health impacts</li> </ul>		
<b>GEMET - INSPIRE themes, version 1.0</b>	<ul style="list-style-type: none"> <li>• Area management/restriction/regulation zones and reporting units</li> </ul>		
<b>Keywords</b>			
<b>Keywords</b>			
<b>GEMET</b>	<ul style="list-style-type: none"> <li>• noise type</li> <li>• noise, vibrations</li> <li>• noise</li> </ul>		
<b>Continents, countries, sea regions of the world.</b>	<ul style="list-style-type: none"> <li>• EEA33 (2013-2020)</li> </ul>		
<a href="#">Spatial scope</a>	<ul style="list-style-type: none"> <li>• <a href="#">European</a></li> </ul>		

<b>EEA Management Plan</b>	<ul style="list-style-type: none"><li>• 2016 1.1.1</li></ul>
<b>Use limitation</b>	EEA standard re-use policy: unless otherwise indicated, re-use of content on the EEA website for commercial or non-commercial purposes is permitted free of charge, provided that the source is acknowledged ( <a href="http://www.eea.europa.eu/legal/copyright">http://www.eea.europa.eu/legal/copyright</a> ). Copyright holder: European Environment Agency (EEA).
<b>Access constraints</b>	Other restrictions
<b>Other constraints</b>	<a href="#">no limitations to public access</a>
<b>Spatial representation type</b>	Grid
<b>Distance</b>	100 m
<b>Language of dataset</b>	English
<b>Topic category</b>	<ul style="list-style-type: none"><li>• Environment</li></ul>

	N		S		E		W
--	---	--	---	--	---	--	---



<b>Begin date</b>	2016-01-01
<b>End date</b>	2016-12-31
<b>CRS identifier</b>	<a href="#">EPSG:3035</a>
<b>Distribution format</b>	<ul style="list-style-type: none"> <li>• GDB ( 1.0 )</li> <li>• GeoTIFF ( )</li> </ul>

### OnLine resource

No information provided.

### OnLine resource

No information provided.

<b>Hierarchy level</b>	Dataset
------------------------	---------

### Conformance result

<b>Date (Publication)</b>	2010-12-08
<b>Explanation</b>	See the referenced specification

<b>Statement</b>	<p>Suitable distance layer from noise sources built following a fuzzy approach (*), calculating the 'membership' to the quietness range (0–1) by means of a linear relationship, considering the mean value obtained as no suitable (= 0) and maximum distance obtained as suitable (= 1). The distance values between not suitable (mean value) and suitable (maximum value) will be reassigned with a new value between 0 and 1 following a linear equation.</p> <p>(*) The production of threshold distance layers around noise sources has been made following a fuzzy approach rather than obtaining a buffer with sharp limits. Membership to a 0-1 range has been obtained according to a linear function.</p> <p>Data sources:</p> <ul style="list-style-type: none"> <li>- END: major roads, major railways and major airports noise contour maps (2012)</li> <li>- END: location of major roads and major railways and major airports</li> <li>- Urban morphological zones (UMZ) from CLC 2006</li> </ul>
------------------	---

- E-PRTR register: industries' location and attributes: Europe-wide register that provides easily accessible key environmental data from industrial facilities in European Union Member States and in Iceland, Liechtenstein, Norway, Serbia and Switzerland. It replaced and improved upon the previous European Pollutant Emission Register (EPER). Access 2014.

- Corine Land Cover and Land Use data 2006 (CLC) (100 x 100 m grid)

- Corine Land Cover 2000 for Greece

- EuroRegionalMap v. 6.0: roads, railways and airports infrastructure. (Version 6.0, 18.12.2012)

- The population of each UMZ in 2000 (year of reference) was added by using the last version (v. 5) of the population density grid constructed by the European Commission research centre (Gallego, 2010). Raster data on population density using Corine Land Cover 2000 inventory.

Full methodology: Good practice guide on quiet areas. Technical report No 4/2014

<http://www.eea.europa.eu/publications/good-practice-guide-on-quiet-areas>

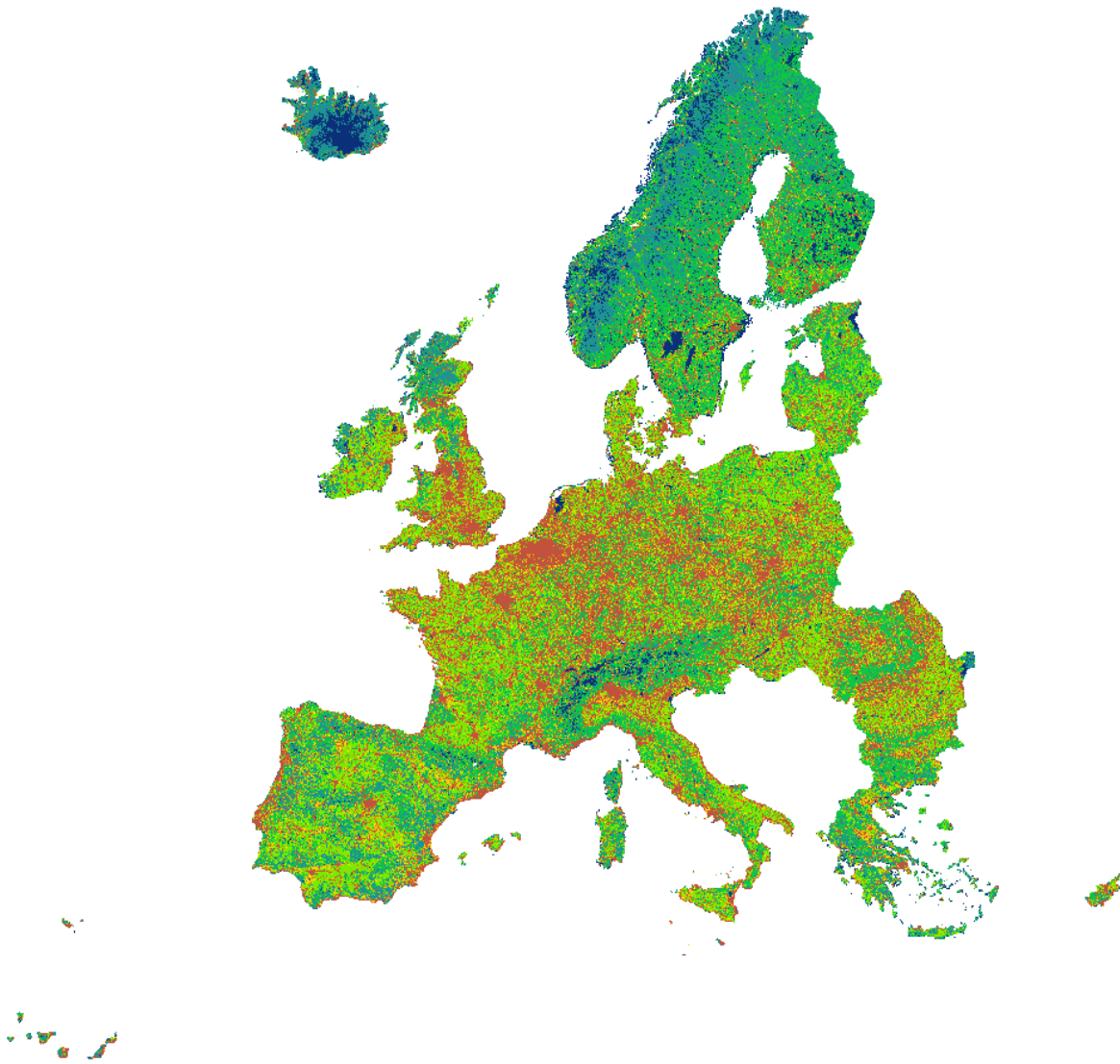
**Source**

- [Urban Morphological Zones 2006 \(vector\) - series](#)
- [Corine Land Cover 2006 \(raster 100m\) - series](#)
- [Corine Land Cover 2000 \(raster 100m\) - version 16, Apr. 2012](#)

**Metadata**

<b>File identifier</b>	e9151c34-da65-48b9-a2ca-b9b835480812 <a href="#">XML</a>										
<b>Metadata language</b>	English										
<b>Character set</b>	UTF8										
<b>Hierarchy level</b>	Dataset										
<b>Date stamp</b>	2020-12-02T14:10:01										
<b>Metadata standard name</b>	ISO 19115/19139										
<b>Metadata standard version</b>	1.0										
<b>Metadata author</b>	<table border="1"> <thead> <tr> <th>Organisation name</th> <th>Individual name</th> <th>Electronic mail address</th> <th>Role</th> </tr> </thead> <tbody> <tr> <td>European Environment Agency</td> <td></td> <td>sdi@eea.eur sdi@eea.europa.eu</td> <td>Point of contact</td> </tr> </tbody> </table>	Organisation name	Individual name	Electronic mail address	Role	European Environment Agency		sdi@eea.eur sdi@eea.europa.eu	Point of contact		
Organisation name	Individual name	Electronic mail address	Role								
European Environment Agency		sdi@eea.eur sdi@eea.europa.eu	Point of contact								

**Overviews**



Provided by

