

## LandScan Global Population Database

LandScan is the community standard for global population distribution. At approximately 1 km resolution, LandScan is the finest resolution global population distribution data available and represents an “ambient population” (average over 24 hours).

### Simple

<b>Citation identifier</b>	ornl_landscan_s
<b>Point of contact</b>	No information provided.
<b>Point of contact</b>	No information provided.
<b>Continents, countries, sea regions of the world.</b>	<ul style="list-style-type: none"> <li>World</li> </ul>
<b>Keywords</b>	
<b>Keywords</b>	
<b>GEMET</b>	<ul style="list-style-type: none"> <li>population distribution</li> <li>population density</li> <li>demography</li> </ul>
<a href="#">GEMET - INSPIRE themes, version 1.0</a>	<ul style="list-style-type: none"> <li>Population distribution — demography</li> </ul>
<a href="#">Spatial scope</a>	<ul style="list-style-type: none"> <li><a href="#">Global</a></li> </ul>
<b>EEA topics</b>	<ul style="list-style-type: none"> <li>Land use</li> </ul>
<b>Aggregate Datasetidentifier</b>	9806e8e2-dc31-4ef9-9244-8c0ba457b6d8
<b>Association Type</b>	Is composed of
<b>Aggregate Datasetidentifier</b>	ee86deb3-5981-4373-a257-ddc28b2cf7a8
<b>Association Type</b>	Is composed of
<b>Aggregate Datasetidentifier</b>	0b7f34af-0202-4ae4-aa06-ae4d91b8c9fa
<b>Association Type</b>	Is composed of
<b>Aggregate Datasetidentifier</b>	659c2707-f35d-40ce-86cc-684c00dc91b1
<b>Association Type</b>	Is composed of
<b>Aggregate Datasetidentifier</b>	abf380b4-818d-42c6-8de5-5230978124e5
<b>Association Type</b>	Is composed of

<b>Aggregate DatasetIdentifier</b>	ceba8505-c9ee-4cdd-a939-b135c7691203
<b>Association Type</b>	Is composed of
<b>Aggregate DatasetIdentifier</b>	39e6a1fb-5217-4e22-ab2e-68d50d11faeb
<b>Association Type</b>	Is composed of
<b>Association Type</b>	Is composed of
<b>Spatial representation type</b>	Grid
<b>Language of dataset</b>	English
<b>Character set</b>	UTF8
<b>Topic category</b>	<ul style="list-style-type: none"><li>• Geoscientific information</li><li>• Society</li></ul>

N

S

E

W



N

S

E

W



	N		S		E		W
--	---	--	---	--	---	--	---

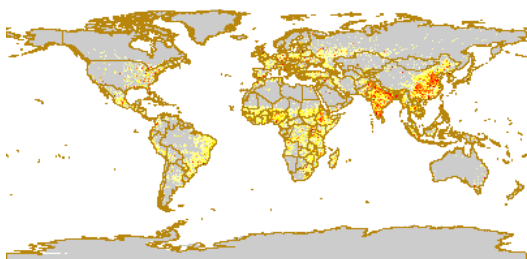
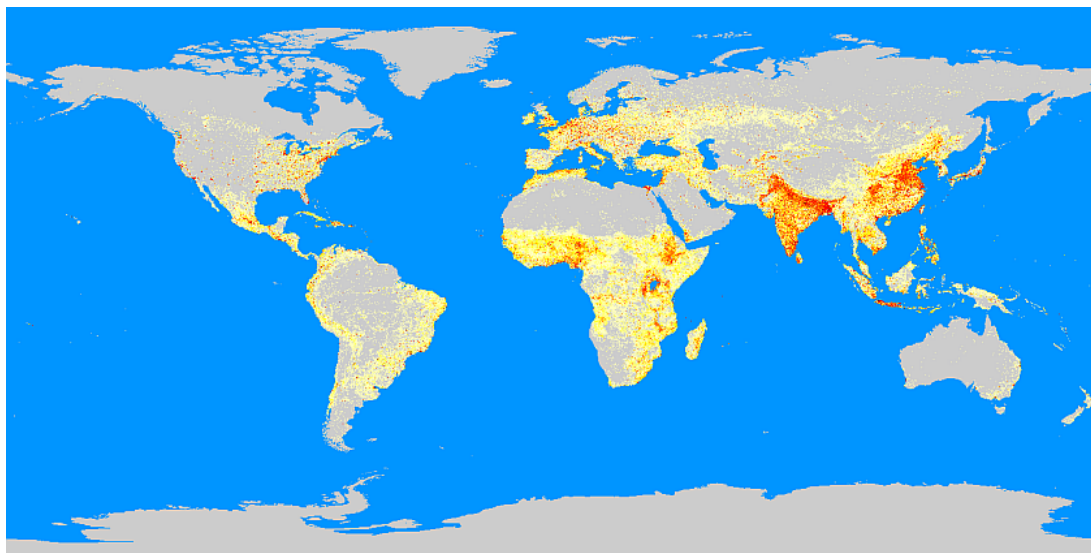
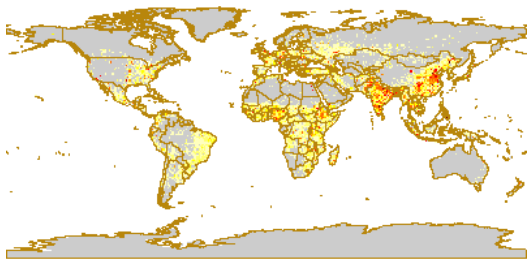


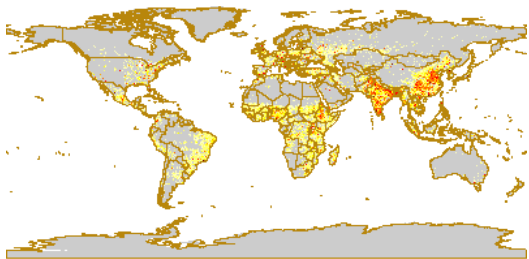
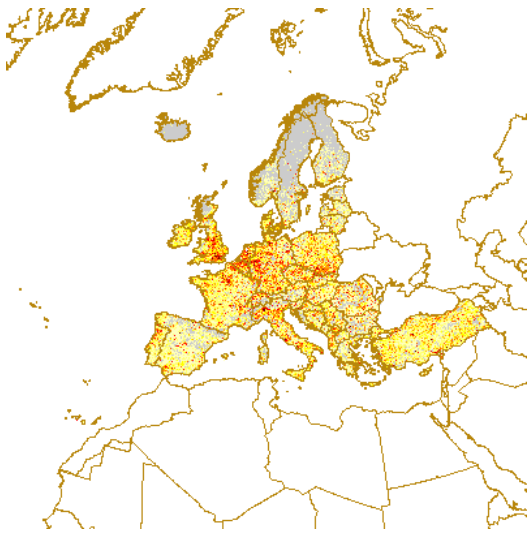
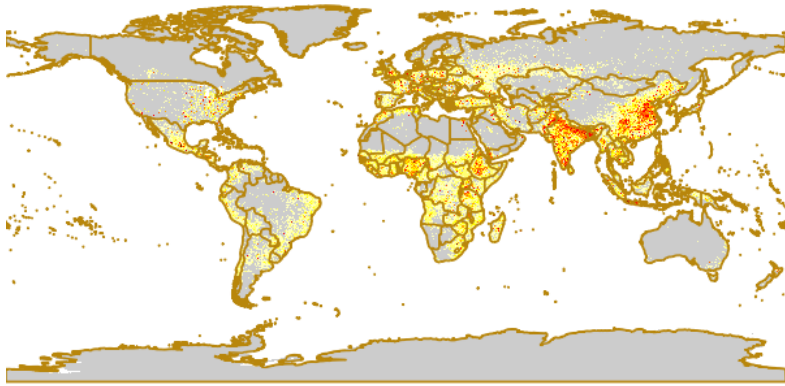
<b>Begin date</b>	2008-01-01
<b>End date</b>	2008-12-31
<b>Begin date</b>	2009-07-01
<b>End date</b>	2009-07-01
<b>Begin date</b>	2010-07-01
<b>End date</b>	2010-07-01
<b>Begin date</b>	2012-07-01
<b>End date</b>	2012-07-01
<b>Begin date</b>	2013-07-01
<b>End date</b>	2013-07-01

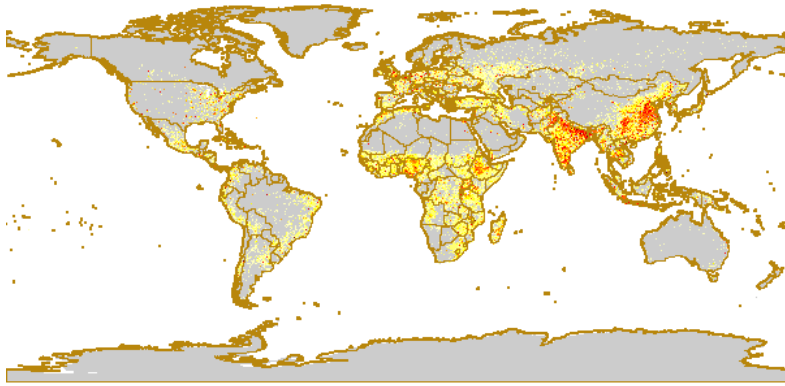
## Metadata

<b>File identifier</b>	eea383c1-e3df-449c-b5b7-8198c5a38759 <a href="#">XML</a>		
<b>Metadata language</b>	English		
<b>Character set</b>	UTF8		
<b>Hierarchy level</b>	Series		
<b>Date stamp</b>	2023-01-06T10:28:09.056Z		
<b>Metadata standard name</b>	ISO 19115:2003/19139		
<b>Metadata standard version</b>	1.0		
<b>Metadata author</b>	<b>Organisation name</b>	<b>Individual name</b>	<b>Electronic mail address</b> <b>Role</b>
	European Environment Agency		sdi@eea.eu sdi@eea.europa.eu Point of contact

## Overviews







Provided by

