

WISE EIONET Spatial Datasets - INTERNAL VERSION - version 1.6, Mar. 2022

The dataset contains information on European groundwater bodies, monitoring sites, river basin districts, river basin districts sub-units and surface bodies reported to the European Environment Agency between 29-11-2001 and 24-03-2022.

This data set is available only for internal use of the European Environment Agency and may contain objects that are deprecated (i.e. that have been retired or superseded) and objects were marked confidential by data providers. Please search for "PUBLIC VERSION" in the dataset title to access the publicly available version.

The information was reported to the European Environment Agency under the State of Environment reporting obligations. For the EU27 countries, Iceland, Norway and the United Kingdom, the EIONET spatial data was consolidated with the spatial data reported under the Water Framework Directive reporting obligations. For these countries, the reference spatial data set is the "WISE WFD Reference Spatial Datasets reported under Water Framework Directive".

Relevant concepts:

Groundwater body: 'Body of groundwater' means a distinct volume of groundwater within an aquifer or aquifers.

Groundwater: All water which is below the surface of the ground in the saturation zone and in direct contact with the ground or subsoil.

Aquifer: Subsurface layer or layers of rock or other geological strata of sufficient porosity and permeability to allow either a significant flow of groundwater or the abstraction of significant quantities of groundwater.

Surface water body: Body of surface water means a discrete and significant element of surface water such as a lake, a reservoir, a stream, river or canal, part of a stream, river or canal, a transitional water or a stretch of coastal water.

Surface water: Inland waters, except groundwater; transitional waters and coastal waters, except in respect of chemical status for which it shall also include territorial waters.

Inland water: All standing or flowing water on the surface of the land, and all groundwater on the landward side of the baseline from which the breadth of territorial waters is measured.

River: Body of inland water flowing for the most part on the surface of the land but which may flow underground for part of its course.

Lake: Body of standing inland surface water.

River basin district: The area of land and sea, made up of one or more neighbouring river basins together with their associated groundwaters and coastal waters, which is the main unit for management of river basins.

River basin: The area of land from which all surface run-off flows through a sequence of streams, rivers and, possibly, lakes into the sea at a single river mouth, estuary or delta.

Sub-basin: The area of land from which all surface run-off flows through a series of streams, rivers and, possibly, lakes to a particular point in a water course (normally a lake or a river confluence).

Sub-unit [Operational definition. Not in the WFD]: Reporting unit. River basin districts larger than 50000 square kilometre should be divided into comparable sub-units with an area between 5000 and 50000 square kilometre. The sub-units should be created using river basins (if more than one river basin exists in the RBD), set of contiguous river basins, or sub-basins, for example. If the RBD area is less than 50000 square kilometre, the RBD itself should be used as a sub-unit.

Simple

Date (Creation)	2018-09-15																	
Date (Revision)	2022-03-24																	
Date (Publication)	2022-03-24																	
Edition	01.06																	
Citation identifier	eea_v_4326_250_k_wise-eionet_i_2001-2022_v01_r06																	
Status	Superseded																	
Point of contact	<table border="1"> <thead> <tr> <th>Organisation name</th> <th>Individual name</th> <th>Electronic mail address</th> <th>Website</th> <th>Role</th> </tr> </thead> <tbody> <tr> <td>European Environment Agency</td> <td></td> <td>sdi@eea.europa.eu</td> <td>http://www.eea.europa.eu</td> <td>Point of contact</td> </tr> <tr> <td>European Environment Agency</td> <td></td> <td>sdi@eea.europa.eu</td> <td>http://www.eea.europa.eu</td> <td>Publisher</td> </tr> </tbody> </table>	Organisation name	Individual name	Electronic mail address	Website	Role	European Environment Agency		sdi@eea.europa.eu	http://www.eea.europa.eu	Point of contact	European Environment Agency		sdi@eea.europa.eu	http://www.eea.europa.eu	Publisher		
Organisation name	Individual name	Electronic mail address	Website	Role														
European Environment Agency		sdi@eea.europa.eu	http://www.eea.europa.eu	Point of contact														
European Environment Agency		sdi@eea.europa.eu	http://www.eea.europa.eu	Publisher														

Point of contact

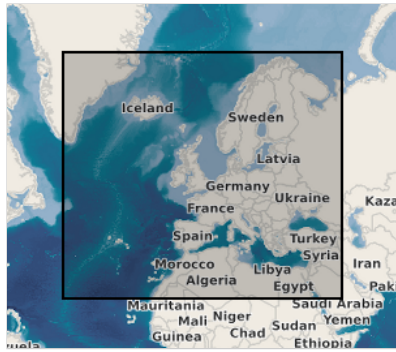
No information provided.

Point of contact

No information provided.

Maintenance and update frequency	As needed
GEMET - INSPIRE themes, version 1.0	<ul style="list-style-type: none">• Environmental monitoring facilities• Area management/restriction/regulation zones and reporting units
WISE metadata keywords, version 1.0, 2009-10-01	<ul style="list-style-type: none">• Water Information System for Europe (WISE)• Groundwater body• Water body• Surface water• Surface water body• Monitoring station• River basin district• Sub unit
Keywords	
GEMET	<ul style="list-style-type: none">• monitoring station• groundwater• water (geographic)• water resources management• aquifer• surface water• water body
Continents, countries, sea regions of the world.	<ul style="list-style-type: none">• EEA38 (from 2020)• United Kingdom
INSPIRE - Feature Concept Dictionary, version 3	<ul style="list-style-type: none">• River Basin• Surface Water
Spatial scope	<ul style="list-style-type: none">• European
EEA topics	<ul style="list-style-type: none">• Water
Access constraints	Other restrictions
Other constraints	public access limited according to Article 13(1)(b) of the INSPIRE Directive
Use constraints	Other restrictions
Other constraints	The dataset contains parts which are restricted by the data providers and not to be made public.
Aggregate DatasetIdentifier	https://sdi.eea.europa.eu/catalogue/srv/eng/catalog.search#/metadata/425a2c27-7101-4201-87b6-c10bdba28485
Association Type	Source
Aggregate DatasetIdentifier	5a23b24d-558f-4fa9-90cb-6f94e688a483

Association Type	Cross reference
Aggregate Dataset Identifier	3bc108fa-1155-452b-b3c0-fb2b08965156
Association Type	Cross reference
Spatial representation type	Vector
Denominator	250000
Language of dataset	English
Character set	UTF8
Topic category	<ul style="list-style-type: none">• Environment• Inland waters• Geoscientific information



Begin date	2001-11-29
End date	2022-03-24
Coordinate reference system identifier	EPSG:4326
Distribution format	<ul style="list-style-type: none"> • SHP (1) • Geopackage (1)

OnLine resource

No information provided.

Hierarchy level	Dataset
------------------------	---------

Conformance result

Date (Publication)	2010-12-08
Explanation	See the referenced specification

Statement	<p>1) Data model</p> <p>The data set follows the WISE spatial data model described in the WISE GIS guidance, available at https://cdr.eionet.europa.eu/help/WFD/WFD_780_2022/GISGuidance/WISE_GIS_Guidance.pdf</p> <p>The formal XSD schemas are available at https://dd.eionet.europa.eu/schemaset/WFD20_22</p> <p>The formal UML model is available at https://cdr.eionet.europa.eu/help/WFD/WFD_780_2022/UML%20Data%20specification/WFD2022_EAP</p> <p>Refer to the WISE GIS guidance for the mapping between the GML elements in the XML schema and the corresponding fields in Shapefile format.</p> <p>Some additional fields are present in the shapefiles: cYear, country, lat, lon, statusCode, statusDate, remarks and qcCheck.</p> <p>cYear: Integer field containing the value 2013 for the objects that have never been reported in WISE-5</p> <p>country: Two-letter ISO code of the country (ISO 3166 alpha-2), except for Greece and the United Kingdom, for which the abbreviations EL and UK are used.</p> <p>lat: Latitude, in decimal degrees, of an arbitrary point located within the geometry of the object (if available)</p> <p>lon: Longitude, in decimal degrees, of an arbitrary point located within the geometry of the object (if available)</p> <p>statusCode: Status code of the thematic identifier in the WISE register (refer to Status for further information).</p>
------------------	---

statusDate: Date of reference for the status code (typically the date when the data was extracted for publication).

remarks: Additional information about the status code of the superseding object, if any.

qcCheck: Additional information about checks performed in the data.

2) Data sources

Information reported until 2013 was compiled by the European Topic Centre on Inland, Coastal and Marine waters. The legacy records can be selected using the criteria cYear = 2013.

Additional information was reported under the "WISE - Spatial Data (WISE-5)" data flow. See <https://rod.eionet.europa.eu/obligations/806> and <http://rod.eionet.europa.eu/obligations/716> for further information on the reporting .

For the EU27 countries, Iceland, Norway and the United Kingdom, the EIONET data was consolidated with the full national datasets reported under the "Water Framework Directive - River Basin Management Plans - 2016 Spatial data" (hereafter WFD2016). See <http://rod.eionet.europa.eu/obligations/717> for further information on the reporting.

3) Data processing

The EIONET data were updated using data reported in WFD2016, whenever the spatial objects could be matched.

For EIONET objects, some information may be missing, if the objects have not been reported since 2013. Objects that no longer exist or were replaced have wiseEvolutionType = 'deletion'.

4) Data quality

THIS DATASET DOES NOT FULLY COMPLY WITH THE WISE SPATIAL DATA MODEL SPECIFICATION.

The reason for non-compliance is that not all the information required by the WISE spatial data model is available for the legacy data reported before 2013.

The geometry of the objects was obtained from the spatial data files, where available. A conventional geometry was included for the objects for which only the location of the representative point was available.

Traceability from a spatial object in the dataset to a specific data element and data file in a Central Data Repository delivery is not possible.

No geometric or topological error correction was performed.

Basic automated editing of string values (upper-casing, trimming, removal of invalid characters or values) was performed.

The compliance of the identifiers of the spatial objects with the requirements of the WISE-5 model was verified.

Thematic identifiers must start with the ISO 3166-1 alpha-2 country code, except for Greece ('EL') and the United Kingdom ('UK').

Thematic identifiers must comply with the following Regex pattern: `^[A-Z]{2}[0-9A-Z]{1}([0-9A-Z_-]{0,38}[0-9A-Z]{1}){0,1}$`

A valid identifier was proposed for each invalid identifier. The changes can be traced via the WISE registers.

5) WISE registers

For river basin districts and sub-units, the register of WISE thematic identifiers is kept in <http://dd.eionet.europa.eu/vocabulary/wise/SpatialUnit>

For surface water bodies and groundwater bodies, the register of WISE thematic identifiers is kept in <http://dd.eionet.europa.eu/vocabulary/wise/WaterBody>

For monitoring sites, the register of WISE thematic identifiers is kept in <http://dd.eionet.europa.eu/vocabulary/wise/MonitoringSite>

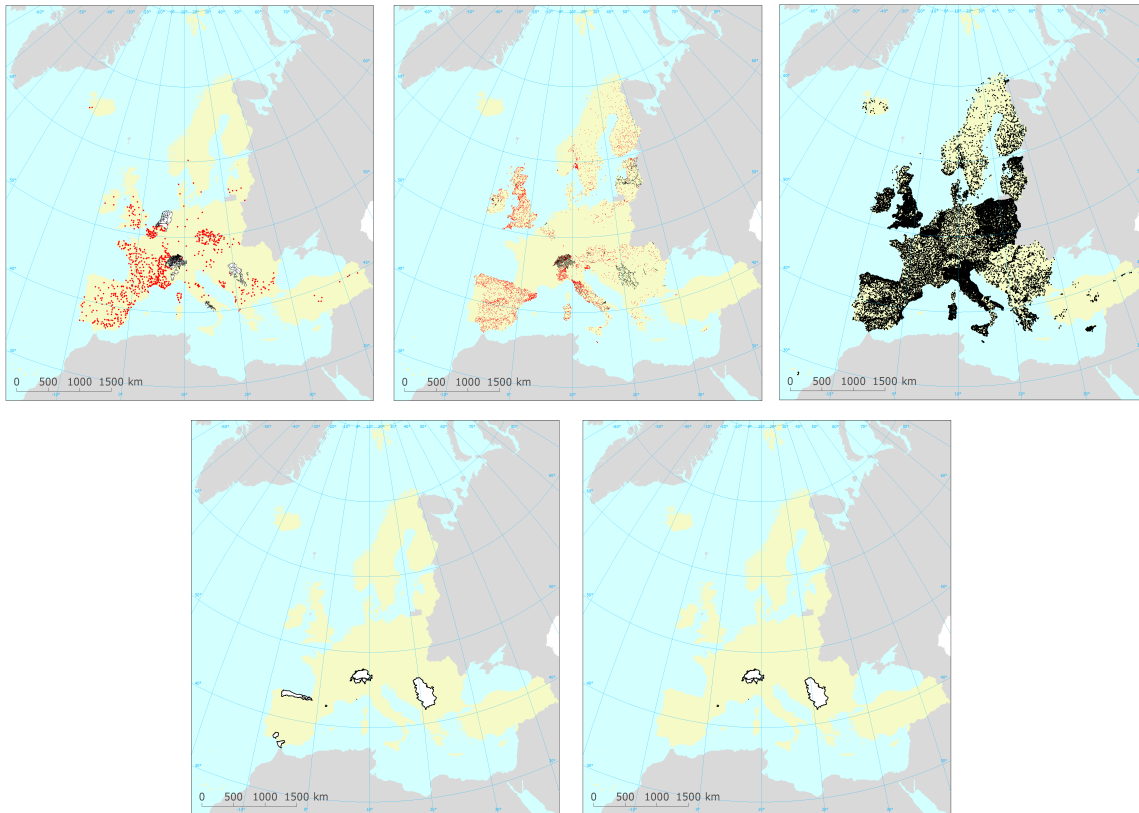
Source

•

Metadata

File identifier	eea93f72-844a-49ef-97a5-0471e01d9de2 XML		
Metadata language	English		
Character set	UTF8		
Hierarchy level	Dataset		
Date stamp	2024-04-26T08:49:39.925977Z		
Metadata standard name	ISO 19115/19139		
Metadata standard version	1.0		
Metadata author	Organisation name	Individual name	Electronic mail address sdi@eea.europa.eu
	European Environment Agency		Website Role Point of contact

Overviews



Provided by

