

WISE WFD Reference Spatial Datasets reported under Water Framework Directive 2016 - INTERNAL VERSION - version 1.4, Apr. 2020

The dataset contains information on the European river basin districts, the river basin district sub-units, the surface water bodies and the groundwater bodies delineated for the 2nd River Basin Management Plans (RBMP) under the Water Framework Directive (WFD) as well as the European monitoring sites used for the assessment of the status of the above mentioned surface water bodies and groundwater bodies.

This data set is available only for internal use of the European Commission and the European Environment Agency. Please search for "PUBLIC VERSION" in the dataset title to access the publicly available version.

The information was reported to the European Commission under the Water Framework Directive (WFD) reporting obligations.

The dataset compiles the available spatial data related to the 2nd RBMPs due in 2016 (hereafter WFD2016).

See <http://rod.eionet.europa.eu/obligations/715> for further information on the WFD2016 reporting .

Relevant concepts:

River basin district (RBD): The area of land and sea, made up of one or more neighbouring river basins together with their associated groundwaters and coastal waters, which is the main unit for management of river basins.

River basin: The area of land from which all surface run-off flows through a sequence of streams, rivers and, possibly, lakes into the sea at a single river mouth, estuary or delta.

Sub-basin: The area of land from which all surface run-off flows through a series of streams, rivers and, possibly, lakes to a particular point in a water course (normally a lake or a river confluence).

Sub-unit [Operational definition. Not in the WFD]: Reporting unit. River basin districts larger than 50000 square kilometre should be divided into comparable sub-units with an area between 5000 and 50000 square kilometre. The sub-units should be created using river basins (if more than one river basin exists in the RBD), set of contiguous river basins, or sub-basins, for example. If the RBD area is less than 50000 square kilometre, the RBD itself should be used as a sub-unit.

Surface water body: Body of surface water means a discrete and significant element of surface water such as a lake, a reservoir, a stream, river or canal, part of a stream, river or canal, a transitional water or a stretch of coastal water.

Surface water: Inland waters, except groundwater; transitional waters and coastal waters, except in respect of chemical status for which it shall also include territorial waters.

Inland water: All standing or flowing water on the surface of the land, and all groundwater on the landward side of the baseline from which the breadth of territorial waters is measured.

River: Body of inland water flowing for the most part on the surface of the land but which may flow underground for part of its course.

Lake: Body of standing inland surface water.

Transitional waters: Bodies of surface water in the vicinity of river mouths which are partly saline in character as a result of their proximity to coastal waters but which are substantially influenced by freshwater flows.

Coastal water: Surface water on the landward side of a line, every point of which is at a distance of one nautical mile on the seaward side from the nearest point of the baseline from which the breadth of territorial waters is measured, extending where appropriate up to the outer limit of transitional waters.

Territorial sea: The territorial waters, or territorial sea as defined by the 1982 United Nations Convention on the Law of the Sea, extend up to a limit not exceeding 12 nautical miles (22.2 km), measured from the baseline. The normal baseline is the low-water line along the coast.

Territorial waters [Operational definition. Not in WFD.]: Reporting unit. The zone between the limit of the coastal water bodies and the limit of the territorial sea, geometrically subdivided in Thiessen polygons according to the adjacent coastal sub-unit (or using any alternative delineation provided by the national competent authorities), and assigned to an adjacent sub-unit for the purpose of reporting the chemical status of the territorial waters under the Water Framework Directive.

Groundwater body: 'Body of groundwater' means a distinct volume of groundwater within an aquifer or aquifers.

Groundwater: All water which is below the surface of the ground in the saturation zone and in direct contact with the ground or subsoil. Aquifer: Subsurface layer or layers of rock or other geological strata of sufficient porosity and permeability to allow either a significant flow of groundwater or the abstraction of significant quantities of groundwater.

Monitoring site: [Operational definition. Not in the WFD] Monitoring point included in a WFD surveillance, operational or investigative monitoring programme.

Simple

Date (Creation)	2017-07-14				
Date (Revision)	2020-03-23				
Date (Publication)	2020-04-02				
Edition	01.04				
Citation identifier	eea_v_4326_250_k_wise-wfd2016_i_2016-2020_v01_r04				
Point of contact	Organisation name	Individual name	Electronic mail address	Website	Role
	European Environment Agency		sdi@eea.europa.eu	http://www.eea.europa.eu	Point of contact

Point of contact

No information provided.

Point of contact

No information provided.

Point of contact

No information provided.

Point of contact

No information provided.

Point of contact

No information provided.

Maintenance and update frequency	As needed
GEMET - INSPIRE themes, version 1.0	<ul style="list-style-type: none">Area management/restriction/regulation zones and reporting unitsEnvironmental monitoring facilities
WISE metadata keywords, version 1.0, 2009-10-01	<ul style="list-style-type: none">Water Information System for Europe (WISE)Water Framework Directive (WFD)River basin districtSub unitMonitoring stationGroundwater bodySurface water body

	<ul style="list-style-type: none"> • Surface water • Water body
Keywords	
GEMET	<ul style="list-style-type: none"> • water resources management • monitoring station • water (geographic) • groundwater • aquifer • water body • river basin • surface water • river basin management
Continents, countries, sea regions of the world.	<ul style="list-style-type: none"> • Iceland • Norway • EU28 (2013-2020)
INSPIRE - Feature Concept Dictionary, version 3	<ul style="list-style-type: none"> • River Basin • WFD Surface Water Body • WFD Ground Water Body • Surface Water • WFD Coastal Water • WFD Lake • WFD River • WFD Transitional Water
Spatial scope	<ul style="list-style-type: none"> • European
INSPIRE priority data set	<ul style="list-style-type: none"> • Surface water bodies (Water Framework Directive) • Groundwater bodies (Water Framework Directive) • Coastal waters (Water Framework Directive) • Lakes (Water Framework Directive) • Rivers (Water Framework Directive) • River basin districts sub-units (Water Framework Directive) • River network (Water Framework Directive) • River basin districts (Water Framework Directive) • Water bodies (Water Framework Directive) • Monitoring stations (Water Framework Directive) • Directive 2000/60/EC • Transitional waters (Water Framework Directive)
EEA topics	<ul style="list-style-type: none"> • Water
Access constraints	Other restrictions

Other constraints	public access limited according to Article 13(1)(b) of the INSPIRE Directive
Use constraints	Other restrictions
Other constraints	The dataset contains parts which are restricted by the data providers and not to be made public. For further information and specification regarding the use limitations and constraints please consult the file WISE_WFD_ReferenceSpatialDataSets_2020-04-02.pdf which is provided together with the data.
Aggregate Datasetidentifier	01875b2b-b0d6-40d2-934b-e4f3dae3cb8b
Association Type	revision of
Aggregate Datasetidentifier	1f91bcac-2d39-4ce3-b684-8612e4b3ed1b
Association Type	Cross reference
Spatial representation type	Vector
Denominator	250000
Language of dataset	English
Character set	UTF8
Topic category	<ul style="list-style-type: none"> • Environment • Inland waters • Geoscientific information

N

S

E

W

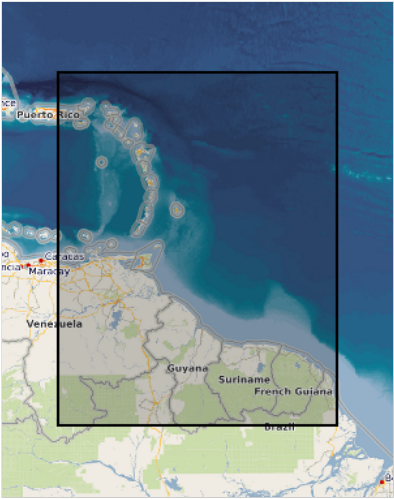


N

S

E

W



	N		S		E		W
--	---	--	---	--	---	--	---



Begin date	2016-05-05
End date	2020-02-12
Coordinate reference system identifier	EPSG:4326
Distribution format	<ul style="list-style-type: none"> • SHP (1.0) • Geopackage ()

OnLine resource

No information provided.

Hierarchy level	Dataset
-----------------	---------

Conformance result

Date (Publication)	2010-12-08
Explanation	See the referenced specification

Statement	<p>1) Data model</p> <p>The data set follows the WISE spatial data model described in the WISE GIS guidance, available at http://cdr.eionet.europa.eu/help/WFD/WFD_521_2016/GISGuidance/WISE_GISGuidance.pdf</p> <p>The formal specification is available at http://cdr.eionet.europa.eu/help/WFD/WFD_521_2016/UML/GML_Schemas_6.0.6.zip</p> <p>The shapefile templates are available at http://cdr.eionet.europa.eu/help/WFD/WFD_521_2016/Shapes/Shapefiles_6.0.6.zip</p> <p>Refer to the WISE GIS guidance for the mapping between the GML elements in the XML schema and the corresponding fields in Shapefile format.</p> <p>Refer to the Technical Report which accompanies the data set for information on the additional fields present in the shapefiles: cYear, country, lat, lon, statusCode, statusDate, remarks and qcCheck.</p> <p>2) Data sources</p> <p>For the 2nd River Basin Management Plans, spatial data was reported under the "Water Framework Directive - River Basin Management Plans - 2016 Spatial data" (hereafter WFD2016). See http://rod.eionet.europa.eu/obligations/717_for_further_information_on_the_reporting .</p> <p>Refer to the Technical Report which accompanies the data set the full list of CDR data sets.</p> <p>3) Data processing</p>
-----------	---

Refer to the Technical Report which accompanies the data set for further information.

4) Data quality

No geometric or topological error correction was performed.

Basic automated editing of string values (upper-casing, trimming, removal of invalid characters or values) was performed.

Refer to the Data Quality report of the CDR deliveries (<http://rod.eionet.europa.eu/obligations/717/deliveries>) for further information.

5) WISE registers

For river basin districts and sub-units, the register of WISE thematic identifiers is kept in <http://dd.eionet.europa.eu/vocabulary/wise/SpatialUnit>

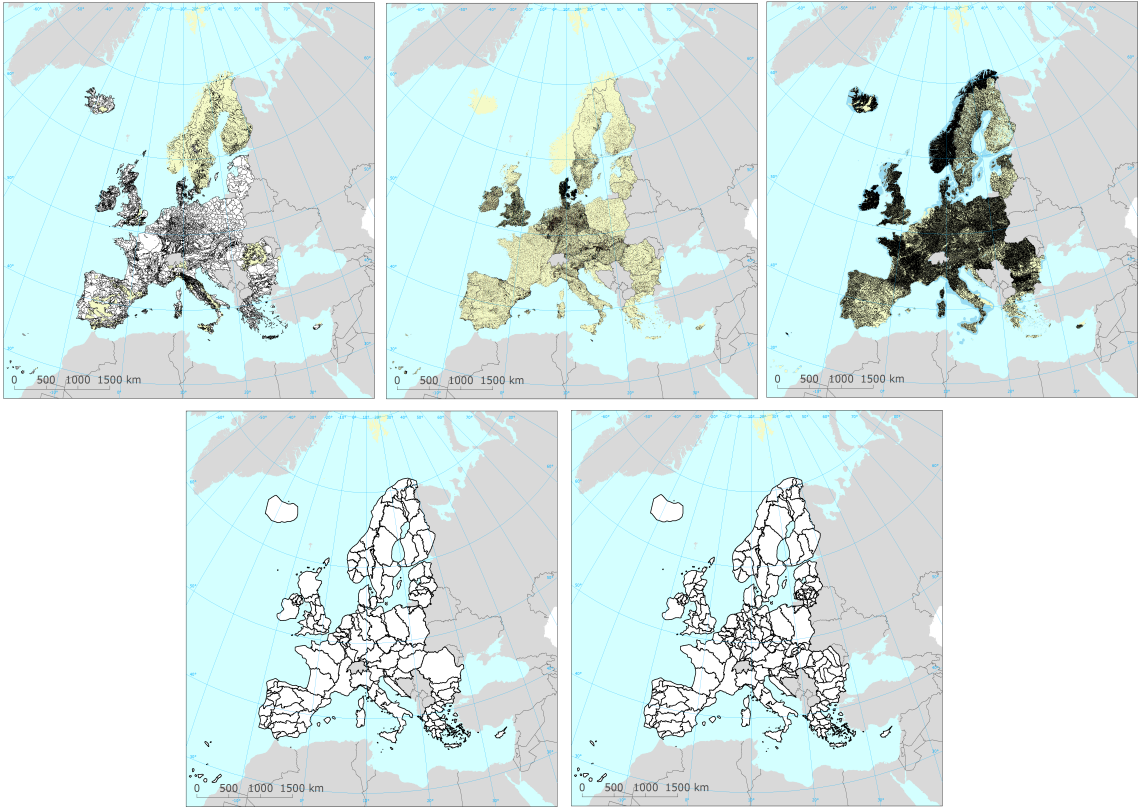
For surface water bodies and groundwater bodies, the register of WISE thematic identifiers is kept in <http://dd.eionet.europa.eu/vocabulary/wise/WaterBody>

For monitoring sites, the register of WISE thematic identifiers is kept in <http://dd.eionet.europa.eu/vocabulary/wise/MonitoringSite>

Metadata

File identifier	eeda7b9e-afa5-4938-a592-08e5c987f6f5 XML		
Metadata language	English		
Character set	UTF8		
Hierarchy level	Dataset		
Date stamp	2020-07-10T17:23:38		
Metadata standard name	ISO 19115/19139		
Metadata standard version	1.0		
Metadata author	Organisation name	Individual name	Electronic mail address Website Role
	European Environment Agency		sdi@eea.europa.eu Point of contact

Overviews



Provided by

