

Pan-European High Resolution Image Mosaic 2018 - False Colour, Coverage 1 (10 m), Sept. 2019

The pan-European High Resolution (HR) Image Mosaic 2018 provides cloud-free high resolution false colour imagery for EEA39 countries. The mosaic has been produced using Sentinel-2 data in 10 meter resolution, at a Sentinel 2 tile level, and consists of 1079 Sentinel-2 tiles. The imagery for each state is acquired within a predefined window corresponding to the vegetation season in 2018.

The false colour composite consists of a three band stack and includes the following bands:

Band 8 – NIR (0.842 m)

Band 4 – Red (0.665 m)

Band 3 – Green (0.560 m)

The mosaic primarily is used as input data in the production of various Copernicus Land Monitoring Service (CLMS) datasets and services, such as land cover maps and high resolution layers on land cover characteristic and can be also useful for CLMS users for visualizations and classifications on land.

Since the pan-European High Resolution Mosaic 2018 is created exclusively from Sentinel-2 data, the imagery can be downloaded from The Copernicus Open Access Hub (mission ongoing since 2015) at <https://scihub.copernicus.eu/>. Global Sentinel-2 Image Mosaics Hub at <https://land.copernicus.eu/imagery-in-situ/global-image-mosaics/> can be also used to automatically create mosaics over the area of interest .

Simple

Date (Creation)	2019-09-05T00:00:00			
Date (Publication)	2019-09-05T00:00:00			
Edition	01.00			
Citation identifier	copernicus_r_3035_10_m_hrim-fc-cov1-2018_p_2017-2019_v01_r00			
Point of contact	Organisation name	Individual name	Electronic mail address	Website Role
	European Environment Agency		copernicus@eea.europa.eu	http://www.eea.europa.eu Point of contact
	European Environment Agency		copernicus@eea.europa.eu	Custodian
	European Environment Agency		copernicus@eea.europa.eu	https://land.copernicus.eu Distributor

Point of contact

No information provided.

Maintenance and update frequency	As needed
GEMET - INSPIRE themes, version 1.0	<ul style="list-style-type: none"> Orthoimagery
Keywords	
Keywords	
GEMET	<ul style="list-style-type: none"> satellite image general environmental policy raster

	<ul style="list-style-type: none"> • mosaic
Continents, countries, sea regions of the world.	<ul style="list-style-type: none"> • EEA38 (from 2020) • United Kingdom
Spatial scope	<ul style="list-style-type: none"> • European
Temporal resolution	<ul style="list-style-type: none"> • As needed
EEA topics	<ul style="list-style-type: none"> • Land use
Access constraints	Other restrictions
Other constraints	no limitations to public access
Use constraints	Other restrictions
Other constraints	<p>Access to data is based on a principle of full, open and free access as established by the Copernicus data and information policy Regulation (EU) No 1159/2013 of 12 July 2013. This regulation establishes registration and licensing conditions for GMES/Copernicus users.</p> <p>Free, full and open access to this data set is made on the conditions that:</p> <ol style="list-style-type: none"> 1. When distributing or communicating Copernicus dedicated data and Copernicus service information to the public, users shall inform the public of the source of that data and information. 2. Users shall make sure not to convey the impression to the public that the user's activities are officially endorsed by the Union. 3. Where that data or information has been adapted or modified, the user shall clearly state this. 4. The data remain the sole property of the European Union. Any information and data produced in the framework of the action shall be the sole property of the European Union. Any communication and publication by the beneficiary shall acknowledge that the data were produced "with funding by the European Union".
Spatial representation type	Grid
Distance	10 10 m
Language of dataset	English
Topic category	<ul style="list-style-type: none"> • Environment • Imagery base maps earth cover

	N		S		E		W
--	---	--	---	--	---	--	---



Begin date	2017-01-01		
End date	2019-12-31		
Coordinate reference system identifier	EPSG:3035		
Distribution format	<ul style="list-style-type: none"> GeoTIFF () 		
OnLine resource	Protocol	Linkage	Name
	WWW:LINK-1.0-http--link	https://land.copernicus.eu/imagery-in-situ/european-image-mosaics/high-resolution/high-resolution-image-mosaics-2018/high-resolution-image-mosaic-2018-false-colour-10m	
	OGC:WMS	https://image.discomap.eea.europa.eu/arcgis/services/GioLand/HRIM_HR_FalseColour_2018/ImageServer/WMServer?request=GetCapabilities&service=WMS	
	WWW:LINK-1.0-http--link		Download (requires authentication)
OnLine resource	Protocol	Linkage	Name
	ESRI:REST	https://image.discomap.eea.europa.eu/arcgis/rest/services/GioLand/HRIM_HR_FalseColour_2018/ImageServer	
Hierarchy level	Dataset		

Conformance result

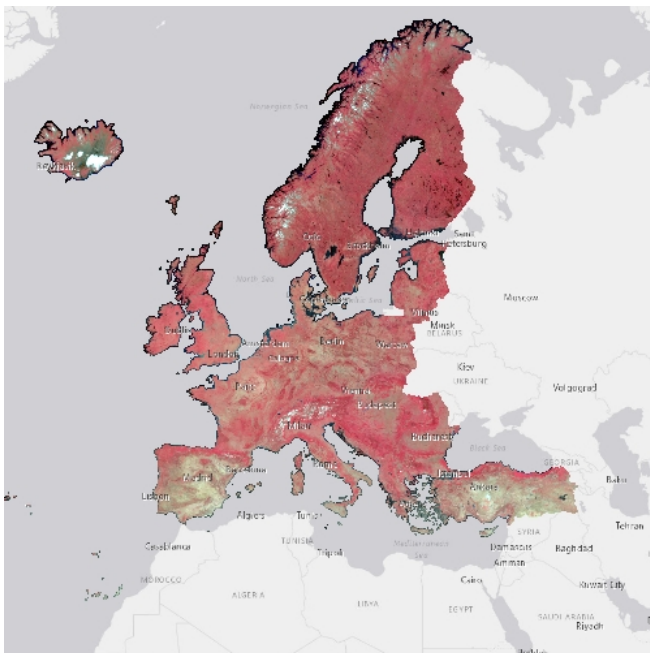
Date (Publication)	2010-12-08
Explanation	See the referenced specification

Statement	<p>Presence of perennial snow and glaciers is to be expected in products.</p> <p>Haze: acceptability assessed by EEA.</p> <p>The sun elevation angle is higher than 20° to ensure sufficient illumination and to minimize the effect of shadows</p> <p>The off-nadir viewing angle is less than 25°.</p> <p>Pixel alignment: The values of the coordinates for the upper-left corner (x and y) of the upper-left pixel of an image dataset shall be an integer multiple of the pixel size (resolution) in the corresponding direction (x and y)</p> <p>Time window:</p> <p>A narrow time window for the 2018 growing season was respected where possible. If too many clouds, gaps, or cloud shadow artefacts were observed in the tile, the time window was extended to utilize a slightly wider time window. This was fully utilized in Iceland and the UK and Ireland. Various other tiles within the dataset were also processed using the wide time window. Iceland was an extreme case, and around Vatnajökull National Park data from 2017 was used to gapfill. In this area the 2018 composite was overlaid on top of a clearest image from 2017 to avoid no-data gaps. The 2017 and 2019 data usage is minimal throughout the coverage.</p>
------------------	--

Metadata

File identifier	f0fd46fb-bd19-4e37-b6be-a3f75c84ccb9 XML		
Metadata language	English		
Character set	UTF8		
Hierarchy level	Dataset		
Date stamp	2021-11-25T08:55:27.323Z		
Metadata standard name	ISO 19115/19139		
Metadata standard version	1.0		
Metadata author	Organisation name	Individual name	Electronic mail address Website Role
	European Environment Agency		sdi@eea.europa.eu Point of contact

Overviews



Provided by

