

European catchments and Rivers network system (Ecrins), functional elementary catchments (fec) - version 1, Jun. 2012

This dataset contains the "functional elementary catchments" datasets of Ecrins v1.0

The FECs apportion into two big categories: the coastal FECs and the continental FECs. Coastal FECs have the following characteristics: they may have 0 to several outlets, they have no upstream FEC and they touch a terminal recipient (sea or endorheic lake). They ID starts by 'W'. The continental FECs may have an outlet, but at least one upstream if the FEC is terminal. Continental FECs belong to three categories: upstream (no upstream FEC), intermediates (upstream(s) and one downstream or terminal (upstream(s) and no downstream).

The database contains a single table of features, named C_Zhyd that contains the Ecrins version to which these FECs refer, the FEC ID and attribute values. Special mention to field Code_Arbo, specially designed to circulate upstream with flat algorithm instead of recursive algorithm.

Full documentation is in EEA technical report 9/2012, downloadable from the EEA website.

Simple

Date (Creation)	2012-06-08		
Edition	01.00		
Citation identifier	eea_v_3035_250_k_ecrins-fec_p_1990-2006_v01_r00		
Citation identifier	DAT-120-en		
Point of contact	Organisation name	Individual name	Electronic mail address Website Role
	European Environment Agency		sdi@eea.europa.eu http://www.eea.europa.eu Point of contact
	European Environment Agency		sdi@eea.europa.eu Custodian
Maintenance and update frequency	Irregular		
GEMET - INSPIRE themes, version 1.0	<ul style="list-style-type: none"> Hydrography 		
Keywords			
Keywords			
GEMET	<ul style="list-style-type: none"> hydrography 		
Spatial scope	<ul style="list-style-type: none"> European 		
EEA topics	<ul style="list-style-type: none"> Water 		
	<ul style="list-style-type: none"> 2012 1.4.1 		
EEA Management Plan	EEA standard re-use policy: unless otherwise indicated, re-use of content on the EEA website for commercial or non-commercial purposes is permitted free of charge, provided that the source is acknowledged (http://www.eea.europa.eu/legal/copyright). Copyright holder: European Environment Agency (EEA).		
Use limitation			
Access constraints	Other restrictions		
Other constraints	no limitations to public access		
Aggregate DatasetIdentifier	88bc8c56-55d6-45a4-91bf-a03843b3e3e7		

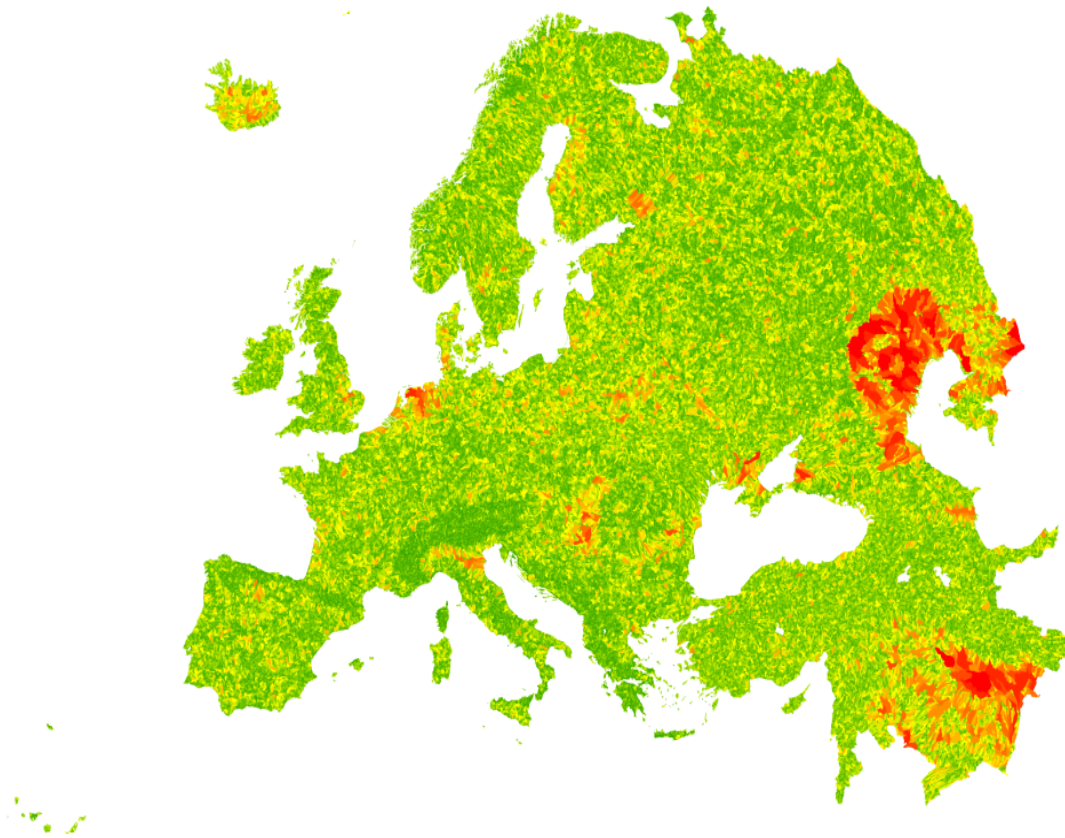
Association Type	Larger work citation
Spatial representation type	Vector
Denominator	250000
Language of dataset	English
Character set	UTF8
Topic category	<ul style="list-style-type: none">• Inland waters



Begin date	1990-01-01		
End date	2006-12-31		
Coordinate reference system identifier	EPSG:3035		
Distribution format	<ul style="list-style-type: none"> • Spatialite () • Microsoft Access (.mdb, .accdb) () 		
OnLine resource	Protocol	Linkage	Name
	EEA:FOLDERPATH	https://sdi.eea.europa.eu/webdav/datastore/public/eea_v_3035_250_k_ecrins_p_1990-2006_v01_r00/eea_v_3035_250_k_ecrins-fec_p_1990-2006_v01_r00/	
	WWW:URL	https://sdi.eea.europa.eu/data/f41103f0-73ba-4fe7-8cb6-12b7e3c4f189	Direct download
	ESRI:REST	https://water.discomap.eea.europa.eu/arcgis/rest/services/ECrins/ECRINS_FunctionalElementaryCatchments/MapServer	
	OGC:WMS	https://water.discomap.eea.europa.eu/arcgis/services/ECrins/ECRINS_FunctionalElementaryCatchments/MapServer/WMServer?request=GetCapabilities&service=WMS	0
	WWW:DOWNLOAD-1.0-http--download	https://sdi.eea.europa.eu/catalogue/srv/api/records/88bc8c56-55d6-45a4-91bf-a03843b3e3e7/attachments/EEA%20Catchments%20and%20Rivers%20Network%20System%20ECRINSv1_1.pdf	GIS data documentation
Hierarchy level	Dataset		
Conformance result			
Date (Publication)	2010-12-08		
Explanation	See the referenced specification		
Statement	<p>Product is based on CCM River and Catchment Database, version 2.1</p> <p>Some hundreds of source CCM elementary catchments have been discarded or reattached. All source CCM catchments have been reallocated to sea shores.</p> <p>Processing consisted of dissolving, under strict control of topology, the 1,409,644 CCM elementary catchments into more homogeneous 181,071 FECS covering the same geographical area, based on size criteria (shrink the range) and Strahler order.</p>		
Metadata			

File identifier	f41103f0-73ba-4fe7-8cb6-12b7e3c4f189 XML		
Metadata language	English		
Character set	UTF8		
Hierarchy level	Dataset		
Date stamp	2023-03-07T15:38:14.131Z		
Metadata standard name	ISO 19115/19139		
Metadata standard version	1.0		
Metadata author	Organisation name	Individual name	Electronic mail address
	European Environment Agency		sdi@eea.europa.eu
			Website Role
			Point of contact

Overviews



Provided by

