

WISE WFD Protected Areas under the Water Framework Directive 2016 - INTERNAL VERSION - version 1.0, Oct. 2019

The data set contains the location of areas which have been designated as requiring special protection of their surface water and groundwater, or for the conservation of habitats and species directly depending on water, including economically significant aquatic species (e.g. shellfish).

According to the Article 6 of the Water Framework Directive (WFD, Directive 2000/60/EC), Member States shall ensure the establishment of a register of all areas lying within each River Basin District which have been designated as requiring special protection under specific Community legislation for the protection of their surface water and groundwater, or for the conservation of habitats and species directly depending on water, including the protection of Natura 2000 sites and economically significant aquatic species (e.g. shellfish).

According to Annex IV of the Water Framework Directive, the register shall include the following types of protected areas:

- (i) areas designated for the abstraction of water intended for human consumption under WFD Article 7;
- (ii) areas designated for the protection of economically significant aquatic species;
- (iii) bodies of water designated as recreational waters, including areas designated as bathing waters under the Bathing Water Directive (BWD, Directive 76/160/EEC);
- (iv) nutrient-sensitive areas, including areas designated as vulnerable zones under the Nitrates Directive (Directive 91/676/EEC) and areas designated as sensitive areas under Urban Waste Water Treatment Directive (UWWTD, Directive 91/271/EEC); and

The register shall also include "(v) areas designated for the protection of habitats or species where the maintenance or improvement of the status of water is an important factor in their protection, including relevant Natura 2000 sites designated under the Habitats Directive (Directive 92/43/EEC) and Birds Directive (Directive 79/409/EEC)."

The Natura 2000 protected sites are not included in the current data set.

This data set is available only for internal use of the European Commission and the European Environment Agency. Please search for "PUBLIC VERSION" in the dataset title to access the publicly available version.

The internal data set includes areas that are no longer designated. The internal data set includes drinking water protection areas for which file access has been restricted by the data providers.

Simple

Date (Creation)	2019-10-15		
Date (Publication)	2019-10-15		
Edition	01.00		
Citation identifier	eea_v_4326_250_k_wise-pareas-wfd2016_i_2016-2019_v01_r00		
Status	Superseded		
Point of contact	Organisation name	Individual name	Electronic mail address
	European Environment Agency		sdi@eea.europa.eu
			http://www.eea.europa.eu
			Point of contact

Point of contact

No information provided.

Point of contact

No information provided.

Point of contact

No information provided.

Maintenance and update frequency	As needed
GEMET - INSPIRE themes, version 1.0	<ul style="list-style-type: none">• Area management/restriction/regulation zones and reporting units
Keywords	
Keywords	
Continents, countries, sea regions of the world.	<ul style="list-style-type: none">• Norway• Lithuania• Croatia• Bulgaria• Spain• Albania• France• Germany• Ireland• Poland• Czechia• United Kingdom• Austria• Belgium• Romania• Sweden• Netherlands• Greece• Hungary• Slovenia• Denmark• Montenegro• Italy• Portugal• Switzerland• Finland• Cyprus• Malta• Estonia• Latvia• Luxembourg• Iceland• Slovakia
GEMET	<ul style="list-style-type: none">• urban waste water• drinking water protection area

	<ul style="list-style-type: none"> • Water Framework Directive • nitrate directive • bathing water
Spatial scope	<ul style="list-style-type: none"> • European
INSPIRE priority data set	<ul style="list-style-type: none"> • Drinking water protection areas (Water Framework Directive) • Protected areas (Water Framework Directive) • Designated waters (Water Framework Directive) • Nitrate vulnerable zones - nutrient sensitive areas (Water Framework Directive) • Bathing water sites (Bathing Water Directive) • Urban waste water sensitive areas - nutrient sensitive areas (Water Framework Directive) • Directive 91/271/EEC • Directive 2006/7/EC • Directive 2000/60/EC • Bathing waters - recreational waters (Water Framework Directive) • Directive 91/676/EEC
EEA topics	<ul style="list-style-type: none"> • Water
Access constraints	Other restrictions
Other constraints	public access limited according to Article 13(1)(b) of the INSPIRE Directive
Other constraints	public access limited according to Article 13(1)(h) of the INSPIRE Directive
Use constraints	Other restrictions
Other constraints	The dataset contains parts which are restricted by the data providers and not to be made public. For further information and specification regarding the use limitations and constraints please consult the file WISE_WFDProtectedArea_SpatialDataSets_2019-10-15_v1.0.pdf which is provided together with the data.
Aggregate DatasetIdentifier	923aee45-1779-40bb-b90c-8e4d5c51350f
Association Type	revision of
Aggregate DatasetIdentifier	3fcdc6b0-97ea-4f88-9041-445275434fcd
Association Type	revision of
Aggregate DatasetIdentifier	c805fb20-1f54-4e25-8f90-21f8faeea3fa
Association Type	revision of
Aggregate DatasetIdentifier	bd3a76cb-ce0d-4464-a17e-befcfff761be
Association Type	revision of
Aggregate DatasetIdentifier	5b35f06e-8c6b-4907-b8f4-39541d170360
Association Type	revision of
Aggregate DatasetIdentifier	cdb7af74-b12d-49f5-b716-bd64c7a0f864
Association Type	revision of
Aggregate DatasetIdentifier	664b1fe6-1436-49a4-b95e-add885aacec0

Association Type	Cross reference
Spatial representation type	Vector
Denominator	250000
Language of dataset	English
Character set	UTF8
Topic category	<ul style="list-style-type: none">• Environment• Inland waters• Geoscientific information

N

S

E

W



N

S

E

W





Begin date	2016-01-01
End date	2019-09-30
Coordinate reference system identifier	EPSG:4326
Distribution format	<ul style="list-style-type: none"> • SHP (1.0) • Geopackage ()

OnLine resource

No information provided.

Hierarchy level	Dataset
------------------------	---------

Conformance result

Date (Publication)	2010-12-08
Explanation	See the referenced specification

Statement	<p>1. The WISE Water Framework Directive (WFD) Protected Area spatial data set includes:</p> <ul style="list-style-type: none"> * Drinking water protected areas. * Designated areas, such as Fish protected areas and Shellfish protected areas. * Nitrates vulnerable zones. * Urban waste water sensitive areas. * Bathing water protected areas. <p>2. The data source varies according to the type of Protected Area:</p> <ol style="list-style-type: none"> The drinking water protected areas and designated areas were reported to the European Commission during the second River Basin Management Plans WFD reporting process, due in 2016. The nitrates vulnerable zones were reported to the European Commission under the Nitrates Directive 91/676/EEC reporting process, for the reference period 2012-2015. The urban waste water sensitive areas were reported to the European Commission under the Urban Waste Water Treatment Directive (UWWTD) reporting process, for the reference period 2016 and complemented with information reported in previous years or under the WFD reporting process. The bathing water protected areas are reported under the Bathing Water Directive (BWD) annual reporting process. The data set includes information reported up to 2018. <p>3. The information from the different data sources was converted to the WFD Protected Area data model. Detailed information about the structure and content of the spatial data sets reported in WFD2016 can be found in the WISE GIS Guidance. Note that some of the information that is mandatory in the WFD Protected Area data model is not available for all data sources.</p>
------------------	--

4. The geometry of protected areas can be reported using polygons, polylines or points. Separate shapefiles are provided for each geometry type, due to the limitations of the shapefile format. Polygonal geometries are published in the ProtectedArea shapefile, linear geometries in ProtectedAreaLine shapefile and point geometries in the ProtectedAreaPoint shapefile. The ProtectedAreaPoint shapefile may also contain records for which the geometry is not available.

5. The geometry of the spatial objects is published in WGS 84 (urn:ogc:def:crs:EPSG::4326). The geometry of the objects was not edited or corrected. Topological and positional errors may exist. If more than one geometry type was reported for the same protected area, then polygons were preferred to polylines or points, and polylines were preferred to points. If more one geometry of the same type was reported for the same protected area, a geometry aggregate was created which may contain overlapping parts.

6. The size of spatial objects was calculated from the projected geometries in ETRS89-LAEA (urn:ogc:def:crs:EPSG::3035). For objects without proper geometry, the reported size is used if available.

7. The following access and use limitations are applicable to the WFD Protected Area data sets:

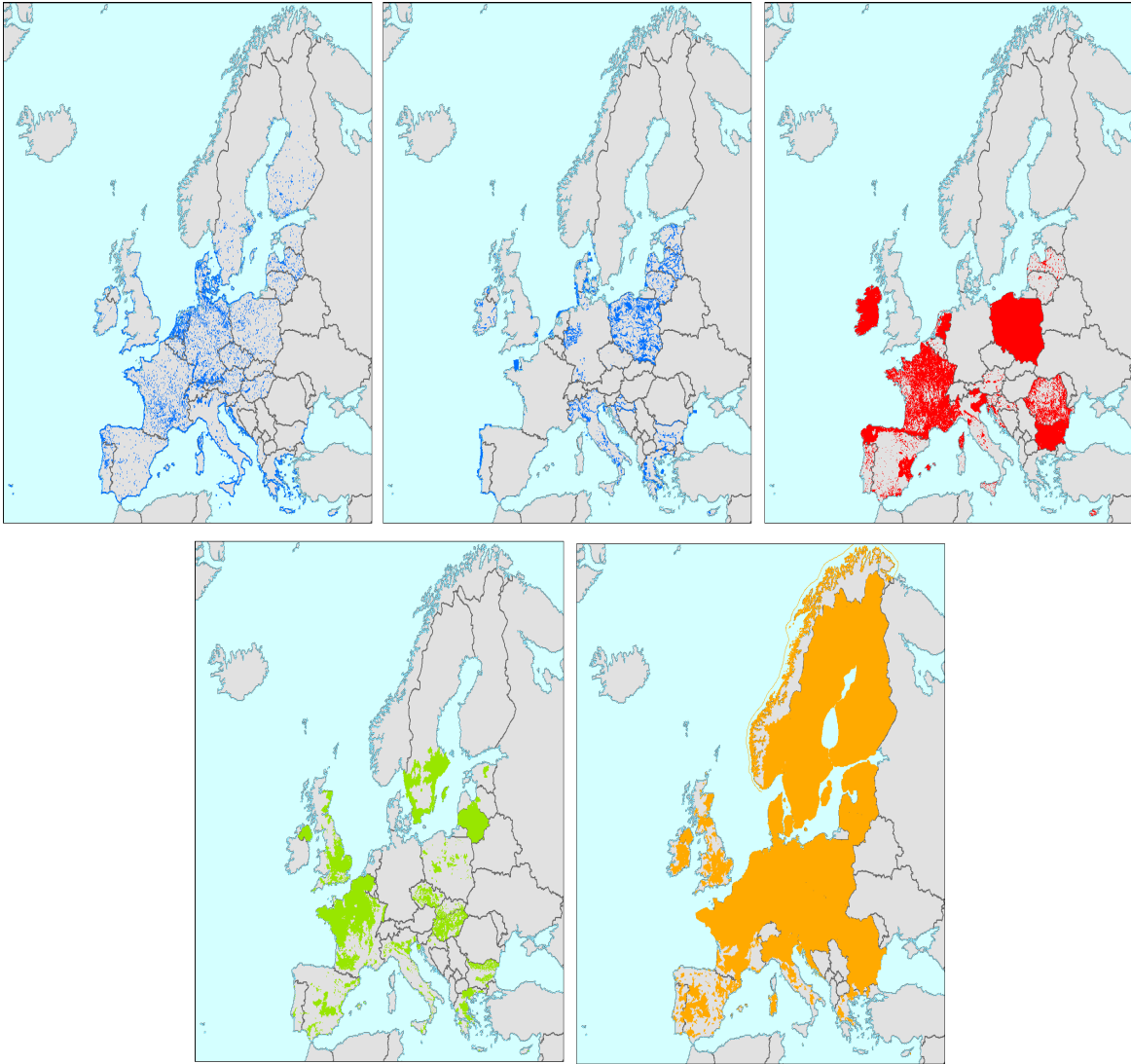
a. The information about drinking water protected areas is not published if the source file in the Central Data Repository (CDR) has been restricted by the Data Provider.

b. The use limitations and the access limitations and other constraints set by the Data Providers are described in the metadata files associated with each delivery in CDR.

Metadata

File identifier	f80004d5-00b9-4736-b465-bf3ebbd88406 XML		
Metadata language	English		
Character set	UTF8		
Hierarchy level	Dataset		
Date stamp	2023-02-20T08:46:57.722Z		
Metadata standard name	ISO 19115/19139		
Metadata standard version	1.0		
Metadata author	Organisation name	Individual name	Electronic mail address Website Role
	European Environment Agency		sdi@eea.europa.eu Point of contact

Overviews



Provided by

