



## WISE WFD Reference Spatial Datasets reported under Water Framework Directive 2016

The dataset contains information on the European river basin districts, the river basin district sub-units, the surface water bodies and the groundwater bodies delineated for the 2nd River Basin Management Plans (RBMP) under the Water Framework Directive (WFD) as well as the European monitoring sites used for the assessment of the status of the above mentioned surface water bodies and groundwater bodies.

The dataset compiles the available spatial data related to the 2nd RBMPs due in 2016 (hereafter WFD2016).

See <http://rod.eionet.europa.eu/obligations/715> for further information on the WFD2016 reporting.

### Simple

#### Identification info

Date (Publication)	2025-10-23
Citation identifier	eea_wise-wfd-reference-spatial-dataset-2016_s
Citation identifier	DAT-30-en
Spatial representation type	Vector

#### Spatial resolution

#### Equivalent scale

Denominator	250000
Topic category	<ul style="list-style-type: none"><li>• Environment</li><li>• Geoscientific information</li><li>• Inland waters</li></ul>

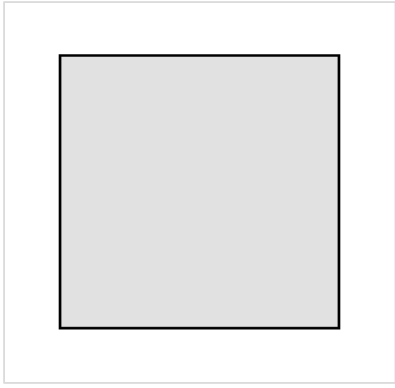
#### Extent

N

S

E

W

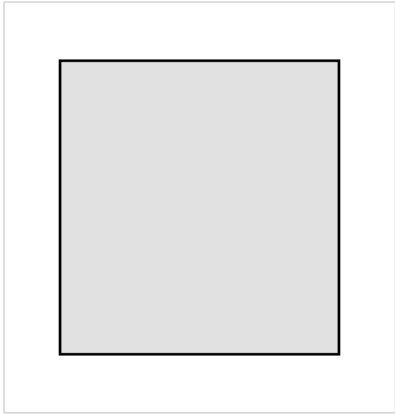


N

S

E

W

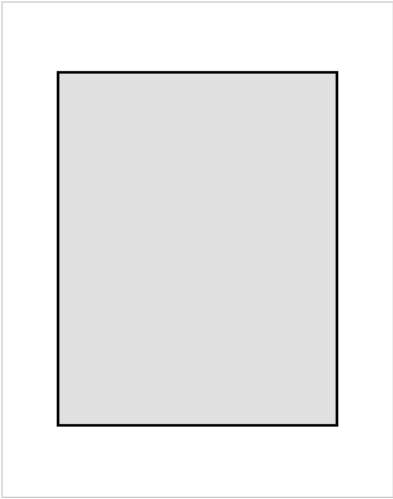


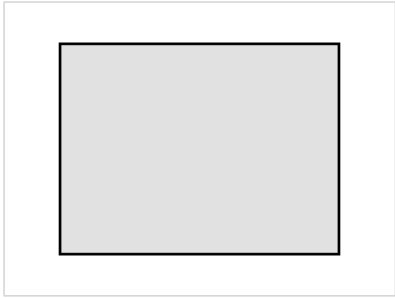
N

S

E

W





**Temporal extent**

<b>Time period</b>	2016-05-05 2020-02-12
--------------------	-----------------------

**Temporal extent**

<b>Time period</b>	2016-05-05 2023-03-10
--------------------	-----------------------

**Temporal extent**

<b>Time period</b>	2016-05-05 2024-03-11
--------------------	-----------------------

**Temporal extent**

<b>Time period</b>	2016-05-05 2024-07-04
--------------------	-----------------------

**Temporal extent**

<b>Time period</b>	2016-05-05 2025-07-09
--------------------	-----------------------

**Continents, countries, sea regions of the world.**

- Iceland
- Norway
- EU28 (2013-2020)
- Slovenia
- Ireland
- Greece
- Cyprus
- Belgium
- Slovakia
- Sweden
- Finland
- Romania
- Czechia
- Croatia
- Poland
- Luxembourg
- Denmark
- Germany
- Italy
- Latvia
- Malta
- Spain
- Portugal

	<ul style="list-style-type: none"> <li>• Estonia</li> <li>• Austria</li> <li>• Bulgaria</li> <li>• France</li> <li>• Hungary</li> <li>• Netherlands</li> <li>• Lithuania</li> <li>• United Kingdom</li> </ul>
<b>EEA Management Plan</b>	<ul style="list-style-type: none"> <li>• 2023 1.1.2</li> <li>• 2024 1.1.6</li> <li>• 2020 1.5.5</li> <li>• 2022 1.1.2</li> <li>• 2025 EEA/DATA/2025/029</li> </ul>
<b>EEA topics</b>	<ul style="list-style-type: none"> <li>• Water</li> <li>• <a href="#">Water</a></li> </ul>
<b>GEMET</b>	<ul style="list-style-type: none"> <li>• water resources management</li> <li>• monitoring station</li> <li>• water (geographic)</li> <li>• groundwater</li> <li>• aquifer</li> <li>• water body</li> <li>• river basin</li> <li>• surface water</li> <li>• river basin management</li> <li>• <a href="#">groundwater</a></li> <li>• <a href="#">monitoring station</a></li> <li>• <a href="#">water resources management</a></li> <li>• <a href="#">river basin</a></li> <li>• <a href="#">river basin management</a></li> <li>• <a href="#">water (geographic)</a></li> <li>• <a href="#">aquifer</a></li> <li>• <a href="#">water body</a></li> <li>• <a href="#">surface water</a></li> <li>• <a href="#">in situ</a></li> </ul>
<b>GEMET - INSPIRE themes, version 1.0</b>	<ul style="list-style-type: none"> <li>• Area management/restriction/regulation zones and reporting units</li> <li>• Environmental monitoring facilities</li> <li>• <a href="#">Area management/restriction/regulation zones and reporting units</a></li> <li>• <a href="#">Environmental monitoring facilities</a></li> </ul>
<b>INSPIRE - Feature Concept Dictionary, version 3</b>	<ul style="list-style-type: none"> <li>• River Basin</li> <li>• WFD Surface Water Body</li> <li>• WFD Ground Water Body</li> <li>• Surface Water</li> <li>• WFD Coastal Water</li> <li>• WFD Lake</li> <li>• WFD River</li> <li>• WFD Transitional Water</li> </ul>
<b>INSPIRE priority data set</b>	<ul style="list-style-type: none"> <li>• Surface water bodies (Water Framework Directive)</li> <li>• Groundwater bodies (Water Framework Directive)</li> <li>• Coastal waters (Water Framework Directive)</li> <li>• Lakes (Water Framework Directive)</li> <li>• Rivers (Water Framework Directive)</li> <li>• River basin districts sub-units (Water Framework Directive)</li> <li>• River network (Water Framework Directive)</li> </ul>

	<ul style="list-style-type: none"> <li>• River basin districts (Water Framework Directive)</li> <li>• Water bodies (Water Framework Directive)</li> <li>• Monitoring stations (Water Framework Directive)</li> <li>• Directive 2000/60/EC</li> <li>• Transitional waters (Water Framework Directive)</li> </ul>
<b>Reporting obligations</b>	<ul style="list-style-type: none"> <li>• <a href="#">Environmental Quality Standards Directive - Preliminary programmes of measures and supplementary monitoring</a></li> <li>• <a href="#">Water Framework Directive - Monitoring Programmes</a></li> <li>• <a href="#">Water Framework Directive - River Basin Management Plans - 2016 RBD XML data</a></li> <li>• <a href="#">Water Framework Directive - River Basin Management Plans - 2016 Spatial data</a></li> <li>• <a href="#">Water Framework Directive - River Basin Districts and Competent Authorities</a></li> <li>• <a href="#">Water Framework Directive - River Basin Management Plans - 2016 RBDSUCA XML data</a></li> <li>• <a href="#">Water Framework Directive - River Basin Management Plans - 2010 Reporting</a></li> <li>• <a href="#">Water Framework Directive - River Basin Management Plans - 2016 Reporting</a></li> <li>• <a href="#">Water Framework Directive - Characterisation of River Basin Districts</a></li> <li>• <a href="#">Water Framework Directive - River Basin Management Plans - 2022 Spatial data</a></li> </ul>
<b>Spatial scope</b>	<ul style="list-style-type: none"> <li>• <a href="#">European</a></li> </ul>
<b>WISE metadata keywords, version 1.0, 2009-10-01</b>	<ul style="list-style-type: none"> <li>• Water Information System for Europe (WISE)</li> <li>• Water Framework Directive (WFD)</li> <li>• River basin district</li> <li>• Sub unit</li> <li>• Monitoring station</li> <li>• Groundwater body</li> <li>• Surface water body</li> <li>• Surface water</li> <li>• Water body</li> </ul>

## Associated resource

<b>Association Type</b>	Is composed of
<b>Metadata Reference</b>	<ul style="list-style-type: none"> <li>• <a href="#">WISE WFD Reference Spatial Datasets reported under Water Framework Directive 2016 - INTERNAL VERSION - version 1.4. Apr. 2020</a></li> </ul>

## Associated resource

<b>Association Type</b>	Is composed of
<b>Metadata Reference</b>	<ul style="list-style-type: none"> <li>• <a href="#">WISE WFD Reference Spatial Datasets reported under Water Framework Directive 2016 - INTERNAL VERSION - version 1.5. Mar. 2023</a></li> </ul>

## Associated resource

<b>Association Type</b>	Is composed of
<b>Metadata Reference</b>	<ul style="list-style-type: none"> <li>• <a href="#">WISE WFD Reference Spatial Datasets reported under Water Framework Directive 2016 - INTERNAL VERSION - version 1.6. Mar. 2024</a></li> </ul>

## Associated resource

<b>Association Type</b>	Is composed of
<b>Metadata Reference</b>	<ul style="list-style-type: none"> <li>• <a href="#">WISE WFD Reference Spatial Datasets reported under Water Framework Directive 2016 - INTERNAL VERSION - version 1.7. Jul. 2024</a></li> </ul>

## Associated resource

<b>Association Type</b>	Is composed of
<b>Metadata Reference</b>	<ul style="list-style-type: none"> <li>• <a href="#">WISE WFD Reference Spatial Datasets reported under Water Framework Directive 2016 - PUBLIC VERSION - version 1.4. Apr. 2020</a></li> </ul>

## Associated resource

Association Type	Is composed of
Metadata Reference	<ul style="list-style-type: none"><li>• <a href="#">WISE WFD Reference Spatial Datasets reported under Water Framework Directive 2016 - PUBLIC VERSION - version 1.5, Mar. 2023</a></li></ul>

## Associated resource

Association Type	Is composed of
Metadata Reference	<ul style="list-style-type: none"><li>• <a href="#">WISE WFD Reference Spatial Datasets reported under Water Framework Directive 2016 - PUBLIC VERSION - version 1.6, Mar. 2024</a></li></ul>

## Associated resource

Association Type	Is composed of
Metadata Reference	<ul style="list-style-type: none"><li>• <a href="#">WISE WFD Reference Spatial Datasets reported under Water Framework Directive 2016 - PUBLIC VERSION - version 1.7, Jul. 2024</a></li></ul>

## Associated resource

Association Type	Is composed of
Metadata Reference	<ul style="list-style-type: none"><li>• <a href="#">WISE WFD Reference Spatial Datasets reported under Water Framework Directive 2016 - INTERNAL VERSION - version 1.9, Sep. 2025</a></li></ul>

## Associated resource

Association Type	Is composed of
Metadata Reference	<ul style="list-style-type: none"><li>• <a href="#">WISE WFD Reference Spatial Datasets reported under Water Framework Directive 2016 - PUBLIC VERSION - version 1.9, Sep. 2025</a></li></ul>

## Metadata

Metadata identifier	ff3e1971-494d-4fa5-a57c-660e0f35d451
Language	English
Character encoding	UTF8

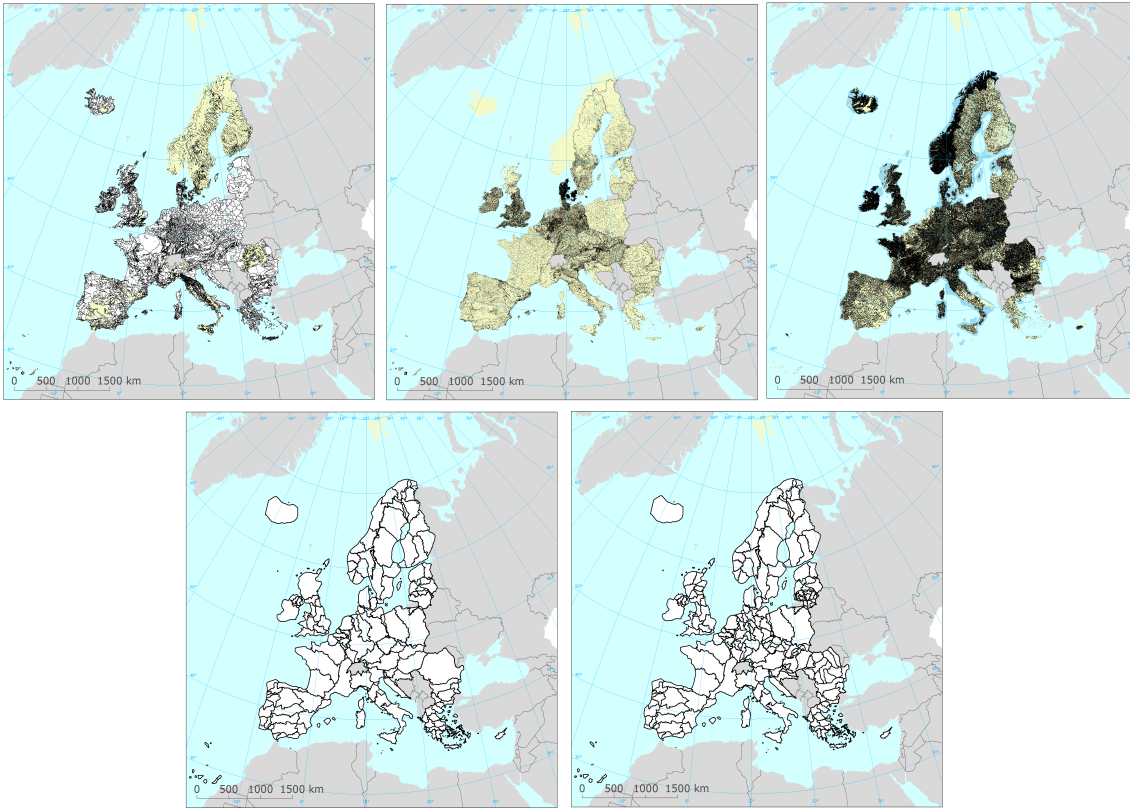
## Type of resource

Resource type	Series
Metadata linkage	<a href="https://sdi.eea.europa.eu/catalogue/srv/api/records/ff3e1971-494d-4fa5-a57c-660e0f35d451">https://sdi.eea.europa.eu/catalogue/srv/api/records/ff3e1971-494d-4fa5-a57c-660e0f35d451</a>
Date info (Creation)	2024-11-04T10:07:24.884394Z
Date info (Revision)	2026-01-08T12:31:20.005557Z

## Metadata standard

Title	ISO 19115-3:2018
Edition	1.0

## Overviews



Provided by

