

Pan-European High Resolution Image Mosaic 2012 - False Colour, Coverage 1 (20 m), July 2015

The pan-European High Resolution (HR) Image Mosaic 2012 provides HR2 (High Resolution: 20 meter) coverage over Europe.

The surface covered by the image dataset is 5.8 million square kilometres and has a spatial resolution of 20 meters. The imagery is composed during specific acquisition windows between 2011 and 2013. Images are derived from the following satellite sensors:

Resourcesat-1/-2

SPOT-4/-5

The mosaic primarily is used as input data in the production of various Copernicus Land Monitoring Service (CLMS) datasets and services, such as land cover maps and high resolution layers on land cover characteristic and can be also useful for CLMS users for visualizations and classifications on land.

The input imagery for the creation of the mosaic is provided by ESA. Due to license restrictions, HR Image Mosaic 2012 is only available as a web service (WMS), and not for data download.

Simple

| | | | | | |
|----------------------------|--|------------------------|--------------------------------|---|------------------|
| Date (Creation) | 2015-07-02T00:00:00 | | | | |
| Date (Publication) | 2015-07-02T00:00:00 | | | | |
| Edition | 01.00 | | | | |
| Citation identifier | copernicus_r_3035_20_m_hrim-fc-cov1-2012_i_2011-2013_v01_r00 | | | | |
| Point of contact | Organisation name | Individual name | Electronic mail address | Website | Role |
| | European Environment Agency | | copernicus@eea.europa.eu | http://www.eea.europa.eu | Point of contact |
| | European Environment Agency | | copernicus@eea.europa.eu | | Custodian |
| | European Environment Agency | | copernicus@eea.europa.eu | https://land.copernicus.eu | Distributor |

Point of contact

No information provided.

| | |
|---|--|
| Maintenance and update frequency | As needed |
| GEMET - INSPIRE themes, version 1.0 | <ul style="list-style-type: none"> • Orthoimagery |
| Keywords | |
| Keywords | |
| GEMET | <ul style="list-style-type: none"> • general • environmental policy • mosaic • raster • satellite image |

| | |
|---|---|
| Continents, countries, sea regions of the world. | <ul style="list-style-type: none"> • EEA38 (from 2020) • United Kingdom |
| Spatial scope | <ul style="list-style-type: none"> • European |
| Temporal resolution | <ul style="list-style-type: none"> • As needed |
| EEA topics | <ul style="list-style-type: none"> • Land use |
| Access constraints | Other restrictions |
| Other constraints | Public access limited according to Article 13(1)(e) of the INSPIRE Directive |
| Use constraints | Other restrictions |
| Other constraints | <p>This dataset is based on inputs from several Copernicus Contributing Missions. Hence, the following license conditions apply: ESA-User license for the use of Copernicus Contributing Missions data - Data Warehouse phase 2 (2014-2020):</p> <p>https://spacedata.copernicus.eu/documents/20126/0/CSCDA_ESA_User_Licence_last_uploaded_2020_02_10.pdf/b879907e-bd00-688e-bf42-bf27a00d70cb?t=15813353917_52</p> |
| Spatial representation type | Grid |
| Distance | 20 20 m |
| Language of dataset | English |
| Topic category | <ul style="list-style-type: none"> • Environment • Imagery base maps earth cover |



| | | | |
|---|---|---|------------------------------------|
| Begin date | 2011-01-01 | | |
| End date | 2013-12-31 | | |
| Coordinate reference system identifier | EPSG:3035 | | |
| Distribution format | <ul style="list-style-type: none"> GeoTIFF () | | |
| OnLine resource | Protocol | Linkage | Name |
| | WWW:LINK-1.0-http--link | https://land.copernicus.eu/imagery-in-situ/european-image-mosaics/high-resolution/Image%202012/COV%201 | |
| | OGC:WMS | https://copernicus.discomap.eea.europa.eu/arcgis/services/GioLand/2012_Coverage1_20m/MapServer/WMServer?request=GetCapabilities&service=WMS | |
| | WWW:LINK-1.0-http--link | | Download (requires authentication) |
| OnLine resource | Protocol | Linkage | Name |
| | ESRI:REST | https://copernicus.discomap.eea.europa.eu/arcgis/rest/services/GioLand/2012_Coverage1_20m/MapServer | |
| Hierarchy level | Dataset | | |

Conformance result

| | |
|---------------------------|----------------------------------|
| Date (Publication) | 2010-12-08 |
| Explanation | See the referenced specification |
| Statement | |

Original narrow and extended acquisition windows have been progressively reviewed in 2012 and in 2013, in order to meet user requirements:

- Cloud coverage: 5% per country.
- 20m RMSE/ Geolocation accuracy after orthorectification.

In addition, products should mostly be:

- Without haze
- Snow coverage < 10%: [only for glaciers/perennial snow]
- Instrument incidence/Pointing angle < 30%.

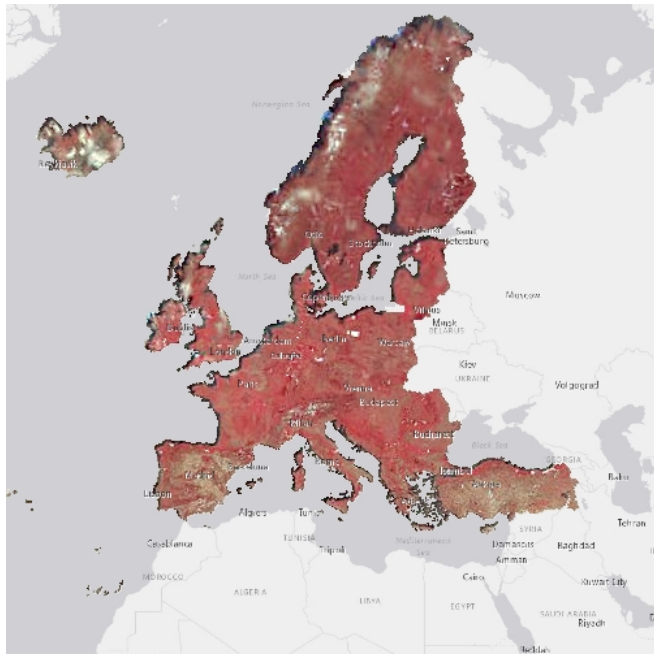
Note: SPOT products are:

- Not atmospherically corrected
- 1% saturated pixels.

Metadata

| | | | |
|----------------------------------|--|------------------------|--|
| File identifier | 08b8793b-2815-4902-9163-d353baeb7c96 XML | | |
| Metadata language | English | | |
| Character set | UTF8 | | |
| Hierarchy level | Dataset | | |
| Date stamp | 2021-11-25T09:06:34.94Z | | |
| Metadata standard name | ISO 19115/19139 | | |
| Metadata standard version | 1.0 | | |
| Metadata author | Organisation name | Individual name | Electronic mail address Website Role |
| | European Environment Agency | | sdi@eea.europa.eu Point of contact |

Overviews



Provided by

