

## Water and Wetness 2015 (raster 20 m), Europe, 3-yearly, Nov. 2020

The Copernicus High Resolution Water and Wetness (WAW) 2015 layer is a thematic product showing the occurrence of water and wet surfaces over the period from 2009 to 2015 for the EEA38 area and the United Kingdom. This metadata corresponds to the 20m classified Water and Wetness product. The production of the High Resolution Water and Wetness layers was coordinated by the European Environment Agency (EEA) in the frame of the EU Copernicus programme.

Two WAW products are available:

- The main Water and Wetness (WAW) product, with defined classes of (1) permanent water, (2) temporary water, (3) permanent wetness and (4) temporary wetness.
- The additional expert product: Water and Wetness Probability Index (WWPI).

The products show the occurrence of water and indicate the degree of wetness in a physical sense, assessed independently of the actual vegetation cover and are thus not limited to a specific land cover class and their relative frequencies.

Data is provided as a mosaic of the full area, and as tiles with a side length of 1000 km x 1000 km. In 2020, and due to methodological improvements, the temporary wet class has been reprocessed during the update for the 2018 reference year.

You can read more about the product here: <https://land.copernicus.eu/en/products/high-resolution-layer-water-and-wetness/water-and-wetness-status-20> 15.

### Simple

<b>Date (Creation)</b>	2018-03-22		
<b>Date (Publication)</b>	2018-03-22		
<b>Date (Revision)</b>	2020-11-19		
<b>Edition</b>	07.00		
<b>Citation identifier</b>	copernicus_r_3035_20_m_waw-2015_p_2009-2015_v07_r00		
<b>Citation identifier</b>	DAT-202-en		
<b>Code</b>	<a href="https://land.copernicus.eu/en/products/high-resolution-layer-water-and-wetness/water-and-wetness-status-20">10.2909/25ed7a97-e3a6-42ed-a403-d636d6880e6d</a>		
<b>Point of contact</b>	<b>Organisation name</b>	<b>Individual name</b>	<b>Electronic mail address</b> <b>Website</b> <b>Role</b>
	European Environment Agency		copernicus@eea.europa.eu <a href="https://land.copernicus.eu">https://land.copernicus.eu</a> Distributor
	European Environment Agency		copernicus@eea.europa.eu <a href="https://land.copernicus.eu">https://land.copernicus.eu</a> Custodian
	European Environment Agency		copernicus@eea.europa.eu <a href="https://land.copernicus.eu">https://land.copernicus.eu</a> Point of contact

### Point of contact

No information provided.

<b>Maintenance and update frequency</b>	Continual
<b>GEMET - INSPIRE themes, version 1.0</b>	<ul style="list-style-type: none"> <li>• Land cover</li> </ul>
<b>Keywords</b>	
<b>Continents, countries, sea regions of the world.</b>	<ul style="list-style-type: none"> <li>• EEA38 (from 2020)</li> </ul>

	<ul style="list-style-type: none"> <li>• United Kingdom</li> </ul>
<b>Keywords</b>	
<b>GEMET</b>	<ul style="list-style-type: none"> <li>• forest management</li> <li>• landscape alteration</li> <li>• land use</li> <li>• water</li> <li>• land cover</li> </ul>
<b>Spatial scope</b>	<ul style="list-style-type: none"> <li>• <a href="#">European</a></li> </ul>
<b>EEA topics</b>	<ul style="list-style-type: none"> <li>• Land use</li> </ul>
<b>EEA Management Plan</b>	<ul style="list-style-type: none"> <li>• 2018 3.6.1</li> </ul>
<b>Access constraints</b>	Other restrictions
<b>Other constraints</b>	<a href="#">no limitations to public access</a>
<b>Use constraints</b>	Other restrictions
<b>Other constraints</b>	<p>Access to data is based on a principle of full, open and free access as established by the Copernicus data and information policy Regulation (EU) No 1159/2013 of 12 July 2013. This regulation establishes registration and licensing conditions for GMES/Copernicus users.</p> <p>Free, full and open access to this data set is made on the conditions that:</p> <ol style="list-style-type: none"> <li>1. When distributing or communicating Copernicus dedicated data and Copernicus service information to the public, users shall inform the public of the source of that data and information.</li> <li>2. Users shall make sure not to convey the impression to the public that the user's activities are officially endorsed by the Union.</li> <li>3. Where that data or information has been adapted or modified, the user shall clearly state this.</li> <li>4. The data remain the sole property of the European Union. Any information and data produced in the framework of the action shall be the sole property of the European Union. Any communication and publication by the beneficiary shall acknowledge that the data were produced "with funding by the European Union".</li> </ol>
<b>Aggregate Datasetidentifier</b>	98fed314-cc2a-4744-a4c9-1ee7473d58cb
<b>Association Type</b>	revision of
<b>Aggregate Datasetidentifier</b>	7992f641-bf77-47b7-b0c1-74fc832b78b1
<b>Association Type</b>	Cross reference
<b>Spatial representation type</b>	Grid
<b>Distance</b>	20 20 m
<b>Language of dataset</b>	English
<b>Character set</b>	UTF8
<b>Topic category</b>	<ul style="list-style-type: none"> <li>• Environment</li> <li>• Imagery base maps earth cover</li> </ul>
<b>Begin date</b>	2009-01-01
<b>End date</b>	2015-12-31

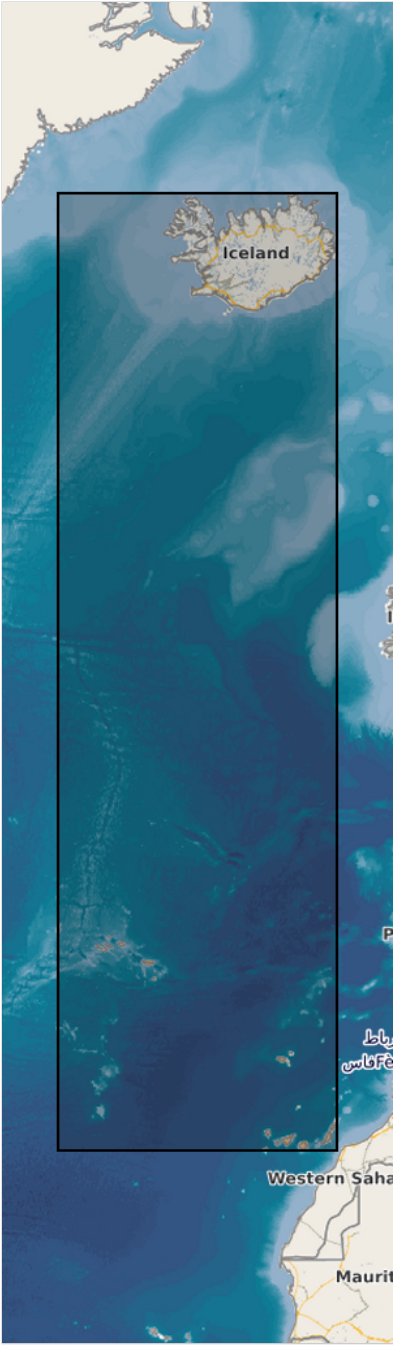


N

S

E

W





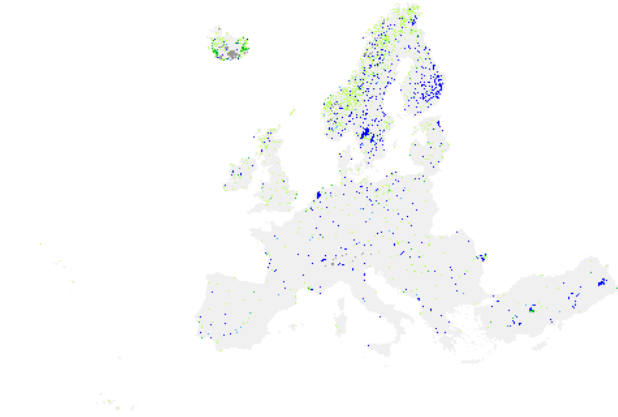
<b>Coordinate reference system identifier</b>	<a href="#">EPSG:3035</a>		
<b>Distribution format</b>	<ul style="list-style-type: none"> <li>GeoTIFF ( 1.0 )</li> </ul>		
<b>OnLine resource</b>	<b>Protocol</b>	<b>Linkage</b>	<b>Name</b>
	ESRI:REST	<a href="https://image.discomap.eea.europa.eu/arcgis/rest/services/GioLandPublic/URL_WaterWetness_2015/MapServer">https://image.discomap.eea.europa.eu/arcgis/rest/services/GioLandPublic/URL_WaterWetness_2015/MapServer</a>	
	OGC:WMS	<a href="https://image.discomap.eea.europa.eu/arcgis/services/GioLandPublic/URL_WaterWetness_2015/MapServer/WMServer?service=WMS&amp;request=GetCapabilities&amp;version=1.3.0">https://image.discomap.eea.europa.eu/arcgis/services/GioLandPublic/URL_WaterWetness_2015/MapServer/WMServer?service=WMS&amp;request=GetCapabilities&amp;version=1.3.0</a>	0
	WWW:LINK-1.0-http--link	<a href="https://land.copernicus.eu/en/products/high-resolution-layer-water-and-wetness/water-and-wetness-status-2015#Download">https://land.copernicus.eu/en/products/high-resolution-layer-water-and-wetness/water-and-wetness-status-2015#Download</a>	Download (requires authentication)
<b>OnLine resource</b>	<b>Protocol</b>	<b>Linkage</b>	<b>Name</b>
	DOI	<a href="https://doi.org/10.2909/25ed7a97-e3a6-42ed-a403-d636d6880e6d">https://doi.org/10.2909/25ed7a97-e3a6-42ed-a403-d636d6880e6d</a>	
<b>Hierarchy level</b>	Dataset		
<b>Conformance result</b>			
<b>Date (Publication)</b>	2010-12-08		
<b>Explanation</b>	See the referenced specification		
<b>Statement</b>	<p>Quality assurance follows the ISO9000 standards for Quality Management and comprises of dedicated procedures of on-going quality checks (QA breakpoints) during implementation of the production chain, in order to keep persistent control over the various stages of production, assure fitness-for-purpose of the end-products and that all quality requirements are fulfilled. Priority will be given to the target thematic accuracies to be achieved by each product, as well as to the issues of product consistency (spatial, thematic, temporal) and homogeneity.</p> <p>Quality Assessment: The quality assessment has been performed according to INSPIRE Data Specifications. The data quality elements considered are:</p> <ul style="list-style-type: none"> <li>(i) Completeness,</li> <li>(ii) Logical Consistency,</li> <li>(iii) Thematic Accuracy,</li> <li>(iv) Temporal quality and (v) Usability.</li> </ul> <p>Each of them (excl. the Thematic Accuracy hereafter) forms a section in the QA/QC Procedures.</p>		

In 2020, due to methodological improvements, the temporary wet class has been reprocessed during the update for the 2018 reference year.

## Metadata

<b>File identifier</b>	25ed7a97-e3a6-42ed-a403-d636d6880e6d <a href="#">XML</a>			
<b>Metadata language</b>	English			
<b>Character set</b>	UTF8			
<b>Hierarchy level</b>	Dataset			
<b>Date stamp</b>	2024-02-06T16:45:14.967Z			
<b>Metadata standard name</b>	ISO 19115/19139			
<b>Metadata standard version</b>	1.0			
<b>Metadata author</b>	<b>Organisation name</b>	<b>Individual name</b>	<b>Electronic mail address</b> sdi@eea. europa.eu	<b>Website Role</b> Point of contact
	European Environment Agency			

## Overviews



Provided by

