

## Riparian Zones Land Cover/Land Use 2018 (vector), Europe, 6-yearly, Dec. 2021

Riparian zones represent transitional areas occurring between land and freshwater ecosystems, characterised by distinctive hydrology, soil and biotic conditions and strongly influenced by the stream water. They provide a wide range of riparian functions (e.g. chemical filtration, flood control, bank stabilization, aquatic life and riparian wildlife support, etc.) and ecosystem services.

The Riparian Zones products support the objectives of several European legal acts and policy initiatives, such as the EU Biodiversity Strategy to 2020, the Habitats and Birds Directives and the Water Framework Directive.

This metadata refers to the Riparian Zones 2018 Land Cover/Land Use (LC/LU), which LC/LU classification is tailored to the needs of biodiversity monitoring in a variable buffer zone of selected rivers (Strahler levels 2-9 derived from EU-Hydro) for the reference year 2018. LC/LU is extracted from Very High Resolution (VHR) satellite data and other available data in a buffer zone of selected rivers for supporting biodiversity monitoring and mapping and assessment of ecosystems and their services. The class definitions follow the pre-defined nomenclature on the basis of Mapping and Assessment of Ecosystems and their Services (MAES) typology of ecosystems (Level 1 to Level 4) and CORINE Land Cover. The classification provides 55 distinct thematic classes with a Minimum Mapping Unit (MMU) of 0.5 ha and a Minimum Mapping Width (MMW) of 10 m.

The production of the Riparian Zones products was coordinated by the European Environment Agency in the frame of the EU Copernicus programme.

### Simple

<b>Date (Creation)</b>	2021-12-14				
<b>Date (Publication)</b>	2021-12-15				
<b>Edition</b>	01.00				
<b>Citation identifier</b>	copernicus_v_3035_10_m_rz-lclu-2018_p_2017-2018_v01_r00				
<b>Citation identifier</b>	DAT-191-en				
<b>Code</b>	<a href="https://doi.org/10.2909/2afca4ec-76e2-4155-b4e6-7460f9f6ae01">10.2909/2afca4ec-76e2-4155-b4e6-7460f9f6ae01</a>				
<b>Point of contact</b>	<b>Organisation name</b>	<b>Individual name</b>	<b>Electronic mail address</b>	<b>Website</b>	<b>Role</b>
	European Environment Agency		copernicus@eea.europa.eu	<a href="https://land.copernicus.eu">https://land.copernicus.eu</a>	Distributor
	European Environment Agency		copernicus@eea.europa.eu	<a href="https://land.copernicus.eu">https://land.copernicus.eu</a>	Custodian
	European Environment Agency		copernicus@eea.europa.eu	<a href="https://land.copernicus.eu">https://land.copernicus.eu</a>	Point of contact

### Point of contact

No information provided.

<b>Maintenance and update frequency</b>	Continual
<b>GEMET - INSPIRE themes, version 1.0</b>	<ul style="list-style-type: none"> <li>Land cover</li> </ul>
<b>Keywords</b>	
<b>Continents, countries, sea regions of the world.</b>	<ul style="list-style-type: none"> <li>United Kingdom</li> <li>EEA38 (from 2020)</li> </ul>
<b>Keywords</b>	

<b>GEMET</b>	<ul style="list-style-type: none"> <li>• riparian zone</li> <li>• landscape alteration</li> <li>• ecosystem services</li> <li>• land use</li> <li>• land cover</li> <li>• hedge</li> <li>• tree</li> </ul>
<b>Spatial scope</b>	<ul style="list-style-type: none"> <li>• <a href="#">European</a></li> </ul>
<b>EEA topics</b>	<ul style="list-style-type: none"> <li>• Land use</li> </ul>
<b>EEA Management Plan</b>	<ul style="list-style-type: none"> <li>• 2017 3.6.2</li> </ul>
<b>Access constraints</b>	Other restrictions
<b>Other constraints</b>	<a href="#">no limitations to public access</a>
<b>Use constraints</b>	Other restrictions
<b>Other constraints</b>	<p>Access to data is based on a principle of full, open and free access as established by the Copernicus data and information policy Regulation (EU) No 1159/2013 of 12 July 2013. This regulation establishes registration and licensing conditions for GMES/Copernicus users.</p> <p>Free, full and open access to this data set is made on the conditions that:</p> <ol style="list-style-type: none"> <li>1. When distributing or communicating Copernicus dedicated data and Copernicus service information to the public, users shall inform the public of the source of that data and information.</li> <li>2. Users shall make sure not to convey the impression to the public that the user's activities are officially endorsed by the Union.</li> <li>3. Where that data or information has been adapted or modified, the user shall clearly state this.</li> <li>4. The data remain the sole property of the European Union. Any information and data produced in the framework of the action shall be the sole property of the European Union. Any communication and publication by the beneficiary shall acknowledge that the data were produced "with funding by the European Union".</li> </ol>
<b>Aggregate DatasetIdentifier</b>	393359a7-7ebd-4a52-80ac-1a18d5f3db9c
<b>Association Type</b>	Cross reference
<b>Spatial representation type</b>	Vector
<b>Distance</b>	10 10 m
<b>Language of dataset</b>	English
<b>Character set</b>	UTF8
<b>Topic category</b>	<ul style="list-style-type: none"> <li>• Environment</li> <li>• Imagery base maps earth cover</li> </ul>
<b>Begin date</b>	2017-01-01
<b>End date</b>	2018-12-31



<b>Additional Information</b>	Spatial Resolution information: The Minimum Mapping Width is 10 m		
<b>Coordinate reference system identifier</b>	<a href="#">EPSG:3035</a>		
<b>Distribution format</b>	<ul style="list-style-type: none"> <li>• SHP ( 1.1 )</li> </ul>		
<b>OnLine resource</b>	<b>Protocol</b>	<b>Linkage</b>	<b>Name</b>
	WWW:LINK-1.0-http--link	<a href="https://land.copernicus.eu/local/riparian-zones/riparian-zones-2018">https://land.copernicus.eu/local/riparian-zones/riparian-zones-2018</a>	
	OGC:WMS	<a href="https://copernicus.discomap.eea.europa.eu/arcgis/services/RiparianZones/RZ_2018/MapServer/WMServer?request=GetCapabilities&amp;service=WMS">https://copernicus.discomap.eea.europa.eu/arcgis/services/RiparianZones/RZ_2018/MapServer/WMServer?request=GetCapabilities&amp;service=WMS</a>	
	ESRI:REST	<a href="https://copernicus.discomap.eea.europa.eu/arcgis/rest/services/RiparianZones/RZ_2018/MapServer">https://copernicus.discomap.eea.europa.eu/arcgis/rest/services/RiparianZones/RZ_2018/MapServer</a>	
	WWW:LINK-1.0-http--link	<a href="https://land.copernicus.eu/en/products/riparian-zones/rz-land-cover-land-use-2018#Download">https://land.copernicus.eu/en/products/riparian-zones/rz-land-cover-land-use-2018#Download</a>	Download (requires authentication)
<b>OnLine resource</b>	<b>Protocol</b>	<b>Linkage</b>	<b>Name</b>
	DOI	<a href="https://doi.org/10.2909/2afca4ec-76e2-4155-b4e6-7460f9f6ae01">https://doi.org/10.2909/2afca4ec-76e2-4155-b4e6-7460f9f6ae01</a>	
<b>Hierarchy level</b>	Dataset		

## Conformance result

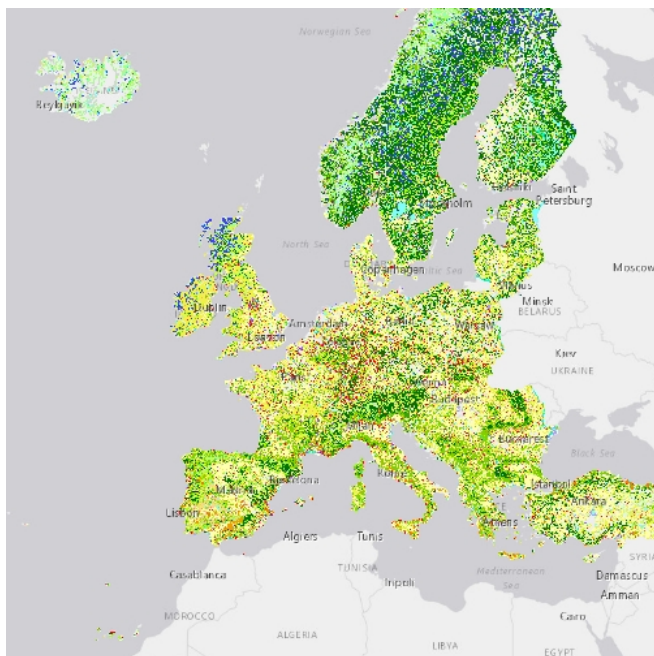
<b>Date (Publication)</b>	2010-12-08
<b>Explanation</b>	See the referenced specification

<b>Statement</b>	<p>Computer assisted visual interpretation of the status 2018 data compared to the LC/LU product for reference year 2012. The main dataset for visual image interpretation was the VHR_IMAGE_2018 dataset (Optical VHR coverage of EEA-39 2017-2019), consisting of 2m Pleiades, Kompsat 3/3A, SuperView-1 and 4m SPOT-6/7, TripleSat, PlanetScope and Deimos satellite data. Subsequently, intersection of classification results with additional data (Urban Atlas 2012) was performed.</p> <p>The current LC/LU layer differentiates 55 thematic LC/LU classes covering Strahler levels 2 to 9 for the reference year 2018.</p> <p>Positional Accuracy: less than 5 m (according to geo-location accuracy of satellite imagery delivered by ESA: less than 5m RMSE). Thematic accuracy (area-corrected Overall Accuracy, internal validation): 95.56% (at CODE_4 level) for status layer 2018 and 98.97% (at CODE_1 level) for change layer 2012-2018. Accuracy Assessment approach: Stratified Random Point Sampling with 1669 sampling points for both, 2018 status layer and 2012-2018 change layer. Interpretation of sampling points has been performed on the best available reference data.</p>
<b>Source</b>	<ul style="list-style-type: none"> <li>•</li> </ul>

## Metadata

File identifier	2afca4ec-76e2-4155-b4e6-7460f9f6ae01 <a href="#">XML</a>			
Metadata language	English			
Character set	UTF8			
Hierarchy level	Dataset			
Date stamp	2023-08-15T14:57:18.867Z			
Metadata standard name	ISO 19115/19139			
Metadata standard version	1.0			
Metadata author	Organisation name	Individual name	Electronic mail address	Website Role
	European Environment Agency		sdi@eea.europa.eu	Point of contact

## Overviews



Provided by

