

## N2K 2006 (vector), Europe, 6-yearly, Jul. 2021

This metadata refers to CLMS N2K 2006 product, the Copernicus Land Cover/Land Use (LC/LU) status map, with 2006 as reference year for the classification, tailored to the needs of biodiversity monitoring in selected Natura2000 sites: 4790 sites of natural and semi-natural grassland formations listed in Annex I of the Habitats Directive, including a 2 km buffer zone surrounding the sites and covering an area of 631.820 km² across Europe (EU27, the United Kingdom and Switzerland). The product includes three Emerald sites in Switzerland. LC/LU has been extracted from VHR satellite data and other available data.

This metadata specifically refers to the revision of the 2006 N2K status map carried out during the production of the 2018 update.

The production of N2K updates was coordinated by the European Environment Agency (EEA) in the frame of the EU Copernicus programme.

You can read more about the product here: <https://land.copernicus.eu/en/products/n2k/n2k-2006>.

### Simple

Date (Creation)	2021-07-16				
Date (Publication)	2021-07-16				
Edition	03.00				
Citation identifier	copernicus_v_3035_10_m_n2k-2006_p_2004-2008_v03_r00				
Citation identifier	DAT-192-en				
Code	<a href="#">10.2909/2e98c4d3-45dc-4b30-81ec-6ad4903f04cb</a>				
Point of contact	<b>Organisation name</b>	<b>Individual name</b>	<b>Electronic mail address</b>	<b>Website</b>	<b>Role</b>
	European Environment Agency		copernicus@eea.europa.eu	<a href="https://land.copernicus.eu">https://land.copernicus.eu</a>	Distributor
	European Environment Agency		copernicus@eea.europa.eu	<a href="https://land.copernicus.eu">https://land.copernicus.eu</a>	Custodian
	European Environment Agency		copernicus@eea.europa.eu	<a href="https://land.copernicus.eu">https://land.copernicus.eu</a>	Point of contact

### Point of contact

No information provided.

<b>Maintenance and update frequency</b>	Continual
<b>GEMET - INSPIRE themes, version 1.0</b>	<ul style="list-style-type: none"> <li>Land cover</li> <li>Protected sites</li> </ul>
<b>Keywords</b>	
<b>Continents, countries, sea regions of the world.</b>	<ul style="list-style-type: none"> <li>Switzerland</li> <li>United Kingdom</li> <li>EU27 (from 2020)</li> </ul>
<b>Keywords</b>	
<b>GEMET</b>	<ul style="list-style-type: none"> <li>species</li> </ul>

	<ul style="list-style-type: none"> <li>land use</li> <li>natural area</li> <li>landscape alteration</li> <li>natural areas protection</li> <li>habitat</li> <li>protected area</li> </ul>
<a href="#">Spatial scope</a>	<ul style="list-style-type: none"> <li><a href="#">European</a></li> </ul>
EEA topics	<ul style="list-style-type: none"> <li>Land use</li> <li>Biodiversity</li> </ul>
EEA Management Plan	<ul style="list-style-type: none"> <li>2017 3.6.2</li> </ul>

## Resource constraints

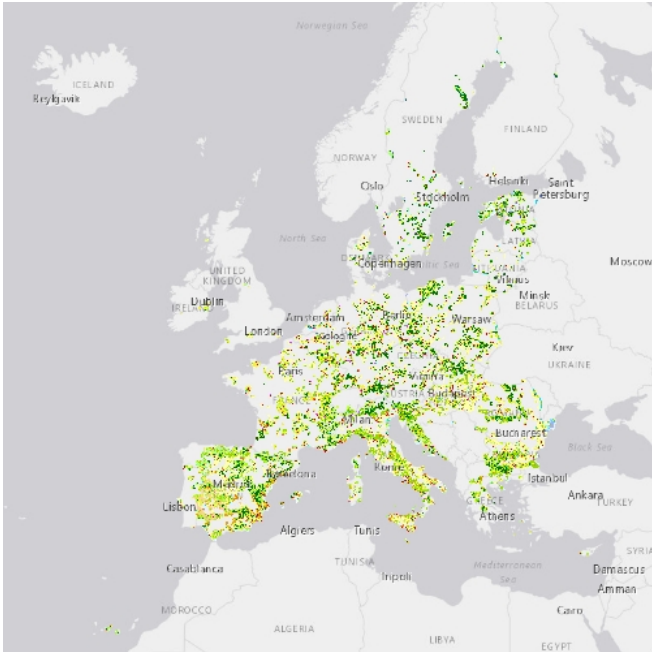
No information provided.

Access constraints	Other restrictions
Other constraints	<a href="#">no limitations to public access</a>
Use constraints	Other restrictions
Other constraints	<p>Access to data is based on a principle of full, open and free access as established by the Copernicus data and information policy Regulation (EU) No 1159/2013 of 12 July 2013. This regulation establishes registration and licensing conditions for GMES/Copernicus users.</p> <p>Free, full and open access to this data set is made on the conditions that:</p> <ol style="list-style-type: none"> <li>When distributing or communicating Copernicus dedicated data and Copernicus service information to the public, users shall inform the public of the source of that data and information.</li> <li>Users shall make sure not to convey the impression to the public that the user's activities are officially endorsed by the Union.</li> <li>Where that data or information has been adapted or modified, the user shall clearly state this.</li> <li>The data remain the sole property of the European Union. Any information and data produced in the framework of the action shall be the sole property of the European Union. Any communication and publication by the beneficiary shall acknowledge that the data were produced "with funding by the European Union".</li> </ol>
Aggregate DatasetIdentifier	2bdd7e1a-15c3-4eed-a460-3e98354cb405
Association Type	revision of
Spatial representation type	Vector
Distance	10 m
Language of dataset	English
Character set	UTF8
Topic category	<ul style="list-style-type: none"> <li>Environment</li> <li>Imagery base maps earth cover</li> </ul>
Begin date	2004-01-01
End date	2008-12-31



File identifier	2e98c4d3-45dc-4b30-81ec-6ad4903f04cb <a href="#">XML</a>		
Metadata language	English		
Character set	UTF8		
Hierarchy level	Dataset		
Date stamp	2024-02-06T16:44:50.942Z		
Metadata standard name	ISO 19115/19139		
Metadata standard version	1.0		
Metadata author	<div> <div>Organisation name</div> <div>European Environment Agency</div> </div>	<div>Individual name</div>	<div> <div>Electronic mail address</div> <div>sdi@eea.europa.eu</div> </div> <div> <div>Website Role</div> <div>Point of contact</div> </div>

Overviews



Provided by

