

N2K Change 2012-2018 (vector), Europe, 6-yearly, Jul. 2021

This metadata refers to the CLMS N2K Change 2012-2018 product, the Copernicus Land Cover/Land Use (LC/LU) change map tailored to the needs of biodiversity monitoring in selected Natura2000 sites: 4790 sites of natural and semi-natural grassland formations listed in Annex I of the Habitats Directive, including a 2km buffer zone surrounding the sites. The change mapping exercise between the reference years 2012 and 2018, was based on the comparison of VHR satellite data and occurred over an area of 631.800 km² across Europe (i.e. EU27, the United Kingdom and Switzerland). The change dataset only shows the areas that have changed between 2012 and 2018 and covers an area of 1.199.652 ha.

LC/LU is extracted from VHR satellite data and other available data. Change detection is based on the analysis of VHR satellite data from the reference years 2012 ±2 years and 2018 ±1 year.

The production of N2K updates was coordinated by the European Environment Agency (EEA) in the frame of the EU Copernicus programme.

You can read more about the product here: <https://land.copernicus.eu/en/products/n2k/n2k-change-2012-2018>.

Simple

Date (Creation)	2021-07-16				
Date (Publication)	2021-07-16				
Edition	01.00				
Citation identifier	copernicus_v_3035_10_m_n2k-cha-2012-2018_p_2010-2019_v01_r00				
Code	10.2909/2fff6d41-eeb6-430e-8740-090f0d4284a2				
Point of contact	Organisation name	Individual name	Electronic mail address	Website	Role
	European Environment Agency		copernicus@eea.europa.eu	https://land.copernicus.eu	Distributor
	European Environment Agency		copernicus@eea.europa.eu	https://land.copernicus.eu	Custodian
	European Environment Agency		copernicus@eea.europa.eu	https://land.copernicus.eu	Point of contact

Point of contact

No information provided.

Maintenance and update frequency	Continual
GEMET - INSPIRE themes, version 1.0	<ul style="list-style-type: none"> Land cover Protected sites
Keywords	
Continents, countries, sea regions of the world.	<ul style="list-style-type: none"> United Kingdom Switzerland EU27 (from 2020)
Keywords	
GEMET	<ul style="list-style-type: none"> natural area landscape alteration

	<ul style="list-style-type: none"> protected area land use habitat species natural areas protection
Spatial scope	<ul style="list-style-type: none"> European
EEA topics	<ul style="list-style-type: none"> Biodiversity Land use

Resource constraints

No information provided.

Access constraints	Other restrictions
Other constraints	no limitations to public access
Use constraints	Other restrictions
Other constraints	<p>Access to data is based on a principle of full, open and free access as established by the Copernicus data and information policy Regulation (EU) No 1159/2013 of 12 July 2013. This regulation establishes registration and licensing conditions for GMES/Copernicus users.</p> <p>Free, full and open access to this data set is made on the conditions that:</p> <ol style="list-style-type: none"> When distributing or communicating Copernicus dedicated data and Copernicus service information to the public, users shall inform the public of the source of that data and information. Users shall make sure not to convey the impression to the public that the user's activities are officially endorsed by the Union. Where that data or information has been adapted or modified, the user shall clearly state this. The data remain the sole property of the European Union. Any information and data produced in the framework of the action shall be the sole property of the European Union. Any communication and publication by the beneficiary shall acknowledge that the data were produced "with funding by the European Union".
Spatial representation type	Vector
Distance	10 10 m
Language of dataset	English
Character set	UTF8
Topic category	<ul style="list-style-type: none"> Environment Imagery base maps earth cover
Begin date	2010-01-01
End date	2019-12-31



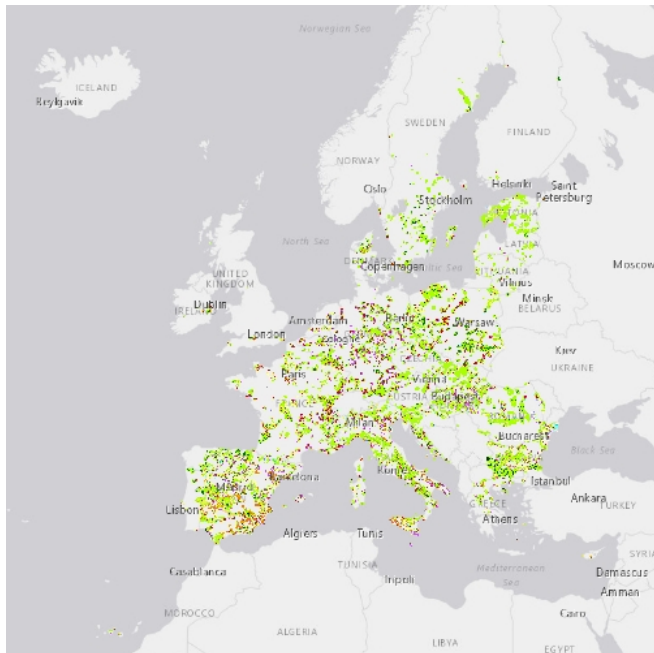
Additional Information	Spatial Resolution information: The Minimum Mapping Width is 10 m		
Coordinate reference system identifier	EPSG:3035		
Distribution format	<ul style="list-style-type: none"> • GDB (1.1) • Spatialite () 		
OnLine resource	Protocol	Linkage	Name
	ESRI:REST	https://copernicus.discomap.eea.europa.eu/arcgis/rest/services/Natura2000/N2K_Change_2012_2018/MapServer	
	OGC:WMS	https://copernicus.discomap.eea.europa.eu/arcgis/services/Natura2000/N2K_Change_2012_2018/MapServer/WMServer?request=GetCapabilities&service=WMS	
	WWW:LINK-1.0-http--link	https://land.copernicus.eu/en/products/n2k/n2k-change-2012-2018#Download	Download (requires authentication)
OnLine resource	Protocol	Linkage	Name
	DOI	https://doi.org/10.2909/2fff6d41-eeb6-430e-8740-090f0d4284a2	
Hierarchy level	Dataset		
Conformance result			
Date (Publication)	2010-12-08		
Explanation	See the referenced specification		

Statement	<p>Computer assisted change detection of LC/LU between the reference years 2012 and 2018 extracted from VHR satellite data and other available data. The change mapping exercise between the reference years 2012 and 2018, was based on the comparison of VHR satellite data and occurred over an area of 631.800 km² across Europe (i.e. within the selected Natura2000 sites and including a 2km buffer zone surrounding those). The change dataset only shows the areas that have changed between 2012 and 2018 and covers an area of 1.199.652 ha. The production of this dataset is the basis for the status map 2018 as well as for the revision of the previous time steps 2012 and 2006.</p> <p>The classification provides 55 distinct thematic classes. The class definitions follow a pre-defined nomenclature based on the Mapping and Assessment of Ecosystems and their Services (MAES) typology of ecosystems (at level 1) and are further harmonised with Corine Land Cover and adapted to the specific characteristics of grasslands habitats (levels 2 to 4). Each change polygon is identified with a change code that shows the initial class and the change class. The Minimum Mapping Unit (MMU) is 0.5 ha and the Minimum Mapping Width (MMW) is 10 m. The positional accuracy is less than 5 m (according to geo-location accuracy of satellite imagery delivered by ESA: less than 5m RMSE). Producer's accuracy assessment approach: stratified random point sampling. Interpretation of sampling points was performed on the best available reference data. The overall accuracy is higher than 80%.</p>
------------------	---

Metadata

File identifier	2ff6d41-eeb6-430e-8740-090f0d4284a2 XML		
Metadata language	English		
Character set	UTF8		
Hierarchy level	Dataset		
Date stamp	2024-02-06T16:45:00.994Z		
Metadata standard name	ISO 19115/19139		
Metadata standard version	1.0		
Metadata author	Organisation name	Individual name	Electronic mail address Website Role
	European Environment Agency		sdi@eea.europa.eu Point of contact

Overviews



Provided by

