

## Imperviousness Change 2006-2009 (raster 100 m), Europe, 3-yearly, Apr. 2018

The high resolution imperviousness products capture the percentage and change of soil sealing. Built-up areas are characterized by the substitution of the original (semi-) natural land cover or water surface with an artificial, often impervious cover. These artificial surfaces are usually maintained over long periods of time. A series of high resolution imperviousness datasets (for the 2006, 2009, 2012, 2015 and 2018 reference years) with all artificially sealed areas was produced using automatic derivation based on calibrated Normalized Difference Vegetation Index (NDVI). This series of imperviousness layers constitutes the main status layers. They are per-pixel estimates of impermeable cover of soil (soil sealing) and are mapped as the degree of imperviousness (0-100%). Imperviousness change layers were produced as a difference between the reference years (2006-2009, 2009-2012, 2012-2015, 2015-2018 and additionally 2006-2012, to fully match the CORINE Land Cover production cycle) and are presented 1) as degree of imperviousness change (-100% -- +100%), in 20m and 100m pixel size, and 2) a classified (categorical) 20m change product.

### Simple

Date (Creation)	2018-04-26				
Date (Publication)	2018-04-26				
Edition	03.00				
Citation identifier	copernicus_r_3035_100_m_imc-2006-2009_p_2006-2009_v03_r00				
Citation identifier	DAT-14-en				
Code	<a href="https://land.copernicus.eu/10.2909/3eccb338-d7d4-43e5-be77-ac0b6afc9aa7">10.2909/3eccb338-d7d4-43e5-be77-ac0b6afc9aa7</a>				
Point of contact	Organisation name	Individual name	Electronic mail address	Website	Role
	European Environment Agency		copernicus@eea.europa.eu	<a href="https://land.copernicus.eu">https://land.copernicus.eu</a>	Distributor
	European Environment Agency		copernicus@eea.europa.eu	<a href="https://land.copernicus.eu">https://land.copernicus.eu</a>	Custodian
	European Environment Agency		copernicus@eea.europa.eu	<a href="https://land.copernicus.eu">https://land.copernicus.eu</a>	Point of contact

### Point of contact

No information provided.

<b>Maintenance and update frequency</b>	Continual
<b>GEMET - INSPIRE themes, version 1.0</b>	<ul style="list-style-type: none"> <li>Land cover</li> </ul>
<b>Keywords</b>	
<b>Continents, countries, sea regions of the world.</b>	<ul style="list-style-type: none"> <li>EEA39</li> </ul>
<b>Keywords</b>	
<b>GEMET</b>	<ul style="list-style-type: none"> <li>built environment</li> <li>land cover</li> <li>land use</li> <li>soil surface sealing</li> <li>landscape alteration</li> <li>sealing</li> </ul>

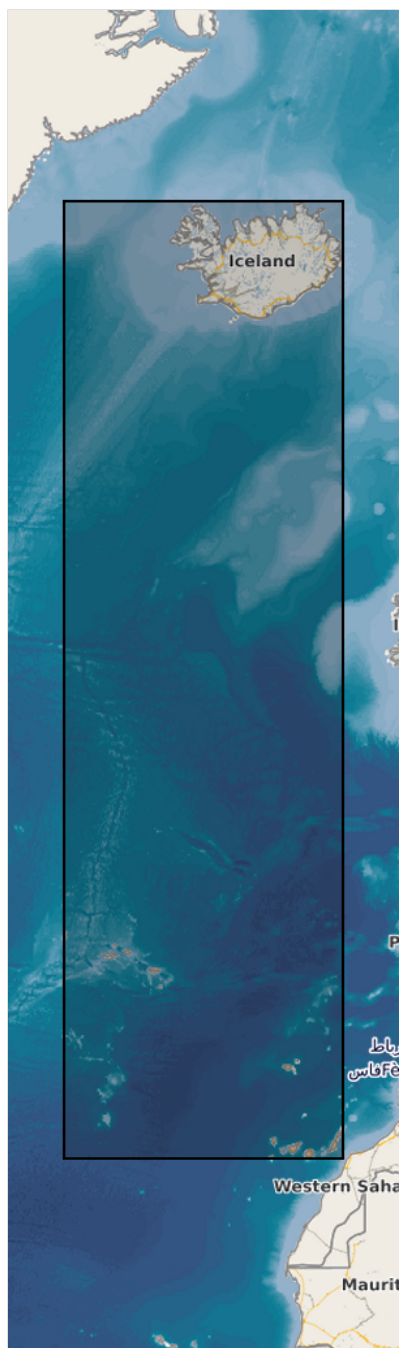
	<ul style="list-style-type: none"> <li>• urban area</li> </ul>
<a href="#">Spatial scope</a>	<ul style="list-style-type: none"> <li>• <a href="#">European</a></li> </ul>
EEA Management Plan	<ul style="list-style-type: none"> <li>• 2018 3.6.1</li> </ul>
EEA topics	<ul style="list-style-type: none"> <li>• Soil</li> <li>• Buildings and construction</li> <li>• Land use</li> </ul>
Access constraints	Other restrictions
Other constraints	<a href="#">no limitations to public access</a>
Use constraints	Other restrictions
Other constraints	<p>Access to data is based on a principle of full, open and free access as established by the Copernicus data and information policy Regulation (EU) No 1159/2013 of 12 July 2013. This regulation establishes registration and licensing conditions for GMES/Copernicus users.</p> <p>Free, full and open access to this data set is made on the conditions that:</p> <ol style="list-style-type: none"> <li>1. When distributing or communicating Copernicus dedicated data and Copernicus service information to the public, users shall inform the public of the source of that data and information.</li> <li>2. Users shall make sure not to convey the impression to the public that the user's activities are officially endorsed by the Union.</li> <li>3. Where that data or information has been adapted or modified, the user shall clearly state this.</li> <li>4. The data remain the sole property of the European Union. Any information and data produced in the framework of the action shall be the sole property of the European Union. Any communication and publication by the beneficiary shall acknowledge that the data were produced "with funding by the European Union".</li> </ol>
Spatial representation type	Grid
Distance	100 m
Language of dataset	English
Character set	UTF8
Topic category	<ul style="list-style-type: none"> <li>• Environment</li> <li>• Imagery base maps earth cover</li> </ul>
Begin date	2006-01-01
End date	2009-12-31

	<b>N</b>
--	----------

	S
--	---

	E
--	---

	<b>W</b>
--	----------



	N		S		E		W
--	---	--	---	--	---	--	---



<b>Coordinate reference system identifier</b>	<a href="#">EPSG:3035</a>		
<b>Distribution format</b>	<ul style="list-style-type: none"> <li>GeoTIFF ( 1.0 )</li> </ul>		
<b>OnLine resource</b>	<b>Protocol</b>  OGC:WMS   ESRI:REST   WWW:LINK-1.0-http--link	<b>Linkage</b>  <a href="https://image.discomap.eea.europa.eu/arcgis/services/GioLandPublic/HRL_ImperviousnessChange_06_09/MapServer/WMSServer?request=GetCapabilities&amp;service=WMS">https://image.discomap.eea.europa.eu/arcgis/services/GioLandPublic/HRL_ImperviousnessChange_06_09/MapServer/WMSServer?request=GetCapabilities&amp;service=WMS</a> <a href="https://image.discomap.eea.europa.eu/arcgis/rest/services/GioLandPublic/HRL_ImperviousnessChange_06_09/MapServer">https://image.discomap.eea.europa.eu/arcgis/rest/services/GioLandPublic/HRL_ImperviousnessChange_06_09/MapServer</a> <a href="https://land.copernicus.eu/en/products/high-resolution-layer-imperviousness/imperviousness-change-2006-2009#Download">https://land.copernicus.eu/en/products/high-resolution-layer-imperviousness/imperviousness-change-2006-2009#Download</a>	<b>Name</b>  1       Download (requires authentication)
<b>OnLine resource</b>	<b>Protocol</b>  DOI	<b>Linkage</b>  <a href="https://doi.org/10.2909/3eccb338-d7d4-43e5-be77-ac0b6afc9aa7">https://doi.org/10.2909/3eccb338-d7d4-43e5-be77-ac0b6afc9aa7</a>	<b>Name</b>
<b>Hierarchy level</b>	Dataset		

## Conformance result

<b>Date (Publication)</b>	2010-12-08
<b>Explanation</b>	See the referenced specification

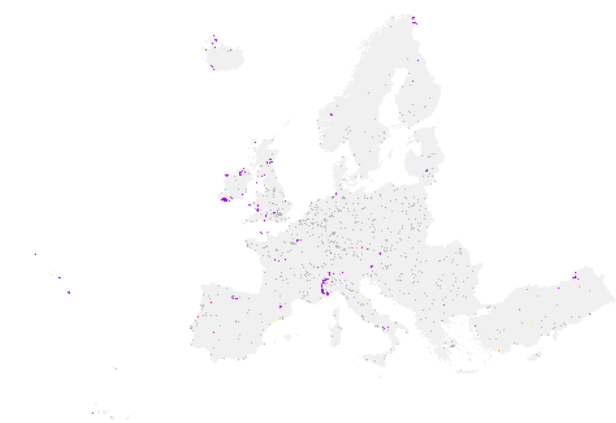
<b>Statement</b>	<p>Quality assurance follows the ISO9000 standards for Quality Management and comprises of dedicated procedures of ongoing quality checks (QA breakpoints) during implementation of the production chain, in order to keep persistent control over the various stages of production, assure fitness-for-purpose of the end-products and that all quality requirements are fulfilled. Priority has been given to the target thematic accuracies to be achieved by each product, as well as to the issues of product consistency (spatial, thematic, temporal) and homogeneity. Quality Assessment: The quality assessment has been performed according to INSPIRE Data Specifications. The data quality elements considered are:</p> <ul style="list-style-type: none"> <li>(i) Completeness,</li> <li>(ii) Logical Consistency,</li> <li>(iii) Thematic Accuracy,</li> <li>(iv) Temporal quality and</li> <li>(v) Usability.</li> </ul> <p>Each of them (excl. the Thematic Accuracy hereafter) forms a section in the QA/QC Procedures.</p>
------------------	--

Source	<ul style="list-style-type: none"><li><a href="#">Imperviousness Density 2006 (raster 100 m), Europe, 3-yearly, Apr. 2018</a></li><li><a href="#">Imperviousness Density 2009 (raster 100 m), Europe, 3-yearly, Apr. 2018</a></li></ul>
--------	---

Metadata

File identifier	3eccb338-d7d4-43e5-be77-ac0b6afc9aa7 <a href="#">XML</a>										
Metadata language	English										
Character set	UTF8										
Hierarchy level	Dataset										
Date stamp	2024-02-06T16:47:03.365Z										
Metadata standard name	ISO 19115/19139										
Metadata standard version	1.0										
Metadata author	<table><tr><th>Organisation name</th><th>Individual name</th><th>Electronic mail address</th><th>Website Role</th></tr><tr><td>European Environment Agency</td><td></td><td>sdi@eea.europa.eu</td><td>Point of contact</td></tr></table>	Organisation name	Individual name	Electronic mail address	Website Role	European Environment Agency		sdi@eea.europa.eu	Point of contact		
Organisation name	Individual name	Electronic mail address	Website Role								
European Environment Agency		sdi@eea.europa.eu	Point of contact								

Overviews



Provided by

