

Satellite Image Mosaic IR at the Key Landscapes for Conservation borders (raster) - version 1, Feb. 2023

This metadata refers to the Satellite Image Mosaics IR generated over the Key Landscapes for Conservation areas (KLC areas in Africa, Indonesia and Caribbean) in the framework of the Copernicus Global Land Hot Spot Mapping (C-GL-HSM) contract under the coordination of JRC.

The KLC areas for which mosaics are included in the dataset are the following:

Caribbean (CAR_01) specific reference time: 2015-2019
 Comoe-Mole (WAF_05) specific reference time: 2014-2018
 Cross River-Takamanda-Mt Cameroon-Korup (CAF_01) specific reference time: 2013-2019
 Garamba-Lantoto-Bili-Uere-Chinko-Southern (CAF_05) specific reference time: 2014-2018
 Great Limpopo (SAF_02) specific reference time: 2014-2018
 Grand Virunga (CAF_02) specific reference time: 2014-2018
 Kundelungu-Upemba (CAF_11) specific reference time: 2014-2018
 Lomami (CAF_15) specific reference time: 2013-2019
 Luangwa (SAF_14_15) specific reference time: 2014-2018
 Madagascar Forests (SAF_21) specific reference time: 2015-2019
 Manovo-Gounda-St Floris-Bamingui (CAF_06) specific reference time: 2013-2019
 Mbam Djerem (CAF_16) specific reference time: 2014-2018
 Niassa-Selous (EAF_04) specific reference time: 2015-2019
 Salonga (CAF_07) specific reference time: 2014-2018
 Tai-Sapo (WAF_10) specific reference time: 2014-2018
 Timor Leste (PAC_01) specific reference time: 2014-2018
 WAPOK (WAF_04) specific reference time: 2015-2019
 Yangambi (CAF_99) specific reference time: 2014-2018

Simple

Date (Creation)	2013-01-01T00:00:00
Date (Publication)	2013-01-01T00:00:00
Edition	01.00
Citation identifier	jrc_v_4326_30_m_c-gl-hsm-klc-borders_p_2013-2019_v01_r00

Point of contact

No information provided.

Point of contact

No information provided.

Point of contact

No information provided.

Point of contact

No information provided.

Maintenance and update frequency	Not planned
---	-------------

GEMET - INSPIRE themes, version 1.0	<ul style="list-style-type: none"> • Land cover • Orthoimagery • Human health and safety
Keywords	
Keywords	
GEMET	<ul style="list-style-type: none"> • land use • land access • land cover • satellite image • landscape alteration • mosaic • landscape
Continents, countries, sea regions of the world.	<ul style="list-style-type: none"> • Indonesia • Caribbean Sea • Africa
Spatial scope	<ul style="list-style-type: none"> • Regional
Temporal resolution	<ul style="list-style-type: none"> • Not planned
EEA topics	<ul style="list-style-type: none"> • Land use • Environmental health impacts
Access constraints	Other restrictions
Other constraints	no limitations to public access
Use constraints	Other restrictions
Other constraints	<p>Access to data is based on a principle of full, open and free access as established by the Copernicus data and information policy Regulation (EU) No 1159/2013 of 12 July 2013. This regulation establishes registration and licensing conditions for GMES/Copernicus users.</p> <p>Free, full and open access to this data set is made on the conditions that:</p> <ol style="list-style-type: none"> 1. When distributing or communicating Copernicus dedicated data and Copernicus service information to the public, users shall inform the public of the source of that data and information. 2. Users shall make sure not to convey the impression to the public that the user's activities are officially endorsed by the Union. 3. Where that data or information has been adapted or modified, the user shall clearly state this. 4. The data remain the sole property of the European Union. Any information and data produced in the framework of the action shall be the sole property of the European Union. Any communication and publication by the beneficiary shall acknowledge that the data were produced "with funding by the European Union".
Spatial representation type	Grid
Distance	30 30 m
Language of dataset	English

Topic category

- Imagery base maps earth cover

Begin date	2013-01-01		
End date	2019-12-31		
Additional Information	<p>The World Database on Protected Areas (WDPA 2019) has been used in the Copernicus Global Land Hot Spot mapping (C-GL-HSM) contract under the coordination of JRC to obtain statistics on land cover changes inside and outside the protected areas.</p> <p>To see how much of the Key Landscapes for Conservation area is a Protected Area, consult the WMS service found at the Service section of this metadata.</p>		
Coordinate reference system identifier	EPSG:4326		
Distribution format	<ul style="list-style-type: none"> GeoTIFF () 		
OnLine resource	Protocol	Linkage	Name
	WWW:LINK-1.0-http--link	https://hsm.land.copernicus.eu/	HotSpot Land Cover Change Explorer
	OGC:WMS	https://geospatial.jrc.ec.europa.eu/geoserver/hotspots/wms	Cross River-Takamanda-Mt Cameroon-Korup
	WWW:LINK-1.0-http--link	https://land.copernicus.eu/en/products/clcc-hot-spots/satellite_images#download	Satellite images
	OGC:WMS	https://geospatial.jrc.ec.europa.eu/geoserver/hotspots/wms	Caribbean
	OGC:WMS	https://geospatial.jrc.ec.europa.eu/geoserver/hotspots/wms	Comoe-Mole
	OGC:WMS	https://geospatial.jrc.ec.europa.eu/geoserver/hotspots/wms	Garamba-Lantoto-Bili-Uere-Chinko-Southern
	OGC:WMS	https://geospatial.jrc.ec.europa.eu/geoserver/hotspots/wms	Great Limpopo
	OGC:WMS	https://geospatial.jrc.ec.europa.eu/geoserver/hotspots/wms	Grand Virunga
	OGC:WMS	https://geospatial.jrc.ec.europa.eu/geoserver/hotspots/wms	Kundelungu-Upemba
	OGC:WMS	https://geospatial.jrc.ec.europa.eu/geoserver/hotspots/wms	Lomami
	OGC:WMS	https://geospatial.jrc.ec.europa.eu/geoserver/hotspots/wms	Luangwa
	OGC:WMS	https://geospatial.jrc.ec.europa.eu/geoserver/hotspots/wms	Madagascar Forests
	OGC:WMS	https://geospatial.jrc.ec.europa.eu/geoserver/hotspots/wms	Manovo-Gounda-St Floris-Bamingui
	OGC:WMS	https://geospatial.jrc.ec.europa.eu/geoserver/hotspots/wms	Mbam Djerem
	OGC:WMS	https://geospatial.jrc.ec.europa.eu/geoserver/hotspots/wms	Niassa-Selous
	OGC:WMS	https://geospatial.jrc.ec.europa.eu/geoserver/hotspots/wms	Salonga
	OGC:WMS	https://geospatial.jrc.ec.europa.eu/geoserver/hotspots/wms	Tai-Sapo
	OGC:WMS	https://geospatial.jrc.ec.europa.eu/geoserver/hotspots/wms	Timor Leste
	OGC:WMS	https://geospatial.jrc.ec.europa.eu/geoserver/hotspots/wms	WAPOK
	OGC:WMS	https://geospatial.jrc.ec.europa.eu/geoserver/hotspots/wms	Yangambi
		https://geospatial.jrc.ec.europa.eu/geoserver/hotspots/wms	

OnLine resource

No information provided.

Hierarchy level	Dataset
------------------------	---------

Conformance result

Date (Publication)	2010-12-08
Explanation	See the referenced specification
Pass	Yes

Statement	<p>The IR Satellite Image Mosaics (and also RGB mosaics) have been produced by e-GEOS through satellite analyses in the context of the Copernicus Global land Hot Spot Mapping (C-GL-HSM) framework.</p> <p>The Satellite Image Mosaics of each KLC are the cloud free composition result of a selection among the images set that have been produced for the automatic classification and for the visual refinement phases of the LC/LCC concerned vector layers. The Satellite Images used to compose the Mosaics have been priorly atmospherically corrected in order to perform the automatic classification, and are provided both in natural colour and infrared band combination version.</p> <p>These Satellite Image Mosaics can be considered as the geometrical reference for the features classes that are not influenced or subject to a seasonal variability.</p> <p>The Satellite Images used for the Mosaic composition are LANDSAT-7, LANDSAT-8, SPOT and SENTINEL-2.</p>
------------------	--

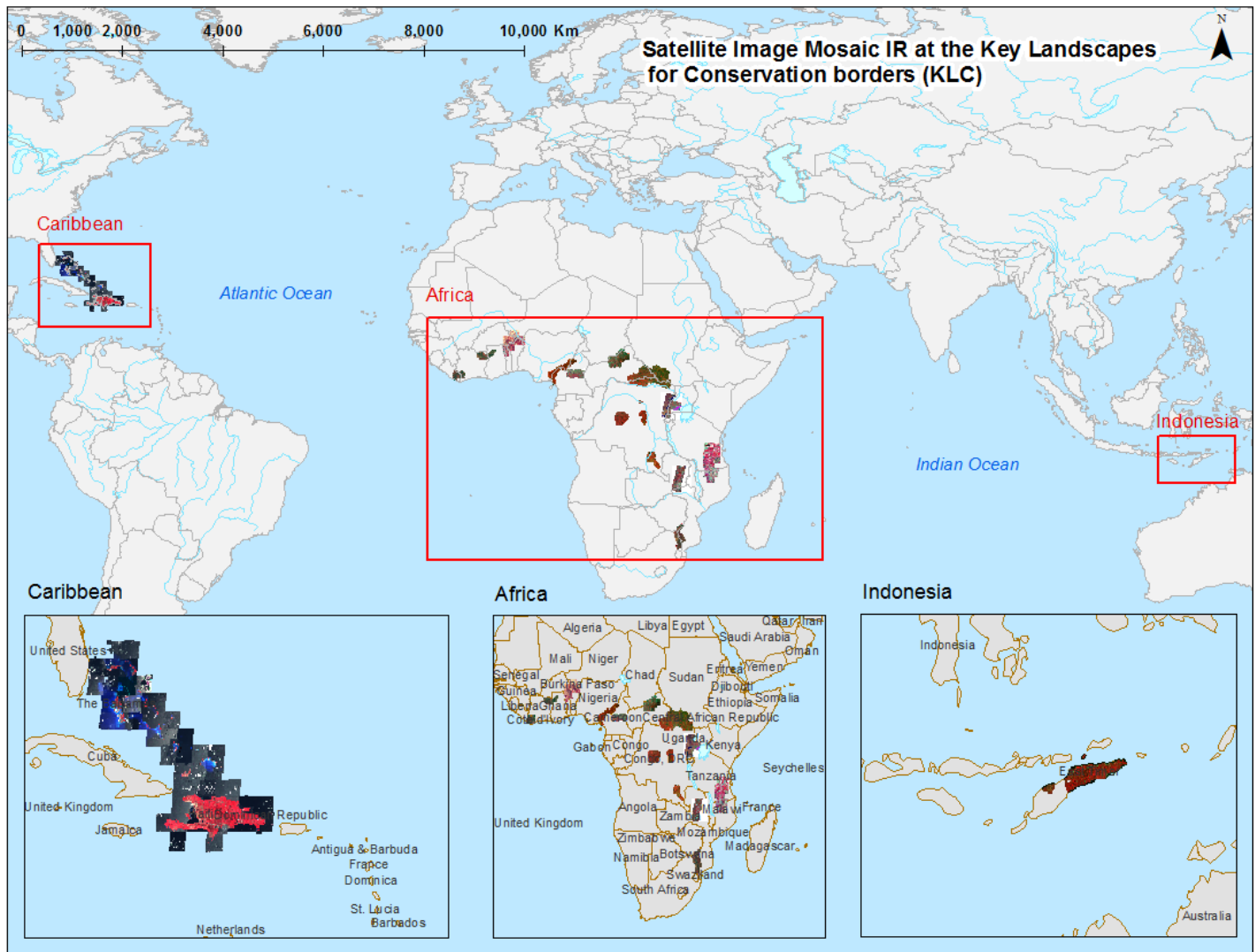
Metadata

File identifier	4967d0bb-75b5-4a22-9f4f-ddabad53bb4d XML
Metadata language	English
Character set	UTF8
Hierarchy level	Dataset
Date stamp	2024-07-22T09:25:19.858399Z
Metadata standard name	ISO 19115/19139
Metadata standard version	1.0

Metadata author

No information provided.

Overviews



Provided by

