

## Urban Atlas - Building Height 2012, version 2 (raster), Mar. 2020

The Copernicus Urban Atlas - Building Height 2012 product is a 10m high resolution raster layer containing height information generated for core urban areas of selected cities (capitals) in EEA38 (with the exception of Vaduz, Liechtenstein) and the United Kingdom as part of the Urban Atlas, with reference year 2012.

The height information is based on IRS-P5 stereo images and derived datasets like the digital surface model, the digital terrain model and the normalized DSM.

This metadata refers an update of this product, which includes the extension of previously published cities Amsterdam, Athens, Berlin, Copenhagen, London and Madrid (version 2.0) and capitals from countries not included in the previous version (Türkiye and EEA cooperating countries). The other core cities in the dataset remain unaltered (version 1.0), but may be updated in the near future.

There is one zip archive per area, which includes: (1) the actual raster data in GeoTIFF format (ETRS89-LAEA); (2) an XML-file with metadata and (3) document with results of quality checks.

### Simple

Date (Creation)	2018-04-19																								
Date (Publication)	2018-04-19																								
Date (Revision)	2020-03-19																								
Edition	02.00																								
Citation identifier	copernicus_r_3035_10_m_ua-bh-2012_p_2011-2014_v02_r00																								
Citation identifier	DAT-190-en																								
Status	Superseded																								
Point of contact	<table><thead><tr><th>Organisation name</th><th>Individual name</th><th>Electronic mail address</th><th>Website</th><th>Role</th></tr></thead><tbody><tr><td>European Environment Agency</td><td></td><td>copernicus@eea.europa.eu</td><td><a href="https://land.copernicus.eu">https://land.copernicus.eu</a></td><td>Distributor</td></tr><tr><td>European Environment Agency</td><td></td><td>copernicus@eea.europa.eu</td><td><a href="https://land.copernicus.eu">https://land.copernicus.eu</a></td><td>Custodian</td></tr><tr><td>European Environment Agency</td><td></td><td>copernicus@eea.europa.eu</td><td><a href="https://land.copernicus.eu">https://land.copernicus.eu</a></td><td>Point of contact</td></tr></tbody></table>					Organisation name	Individual name	Electronic mail address	Website	Role	European Environment Agency		copernicus@eea.europa.eu	<a href="https://land.copernicus.eu">https://land.copernicus.eu</a>	Distributor	European Environment Agency		copernicus@eea.europa.eu	<a href="https://land.copernicus.eu">https://land.copernicus.eu</a>	Custodian	European Environment Agency		copernicus@eea.europa.eu	<a href="https://land.copernicus.eu">https://land.copernicus.eu</a>	Point of contact
Organisation name	Individual name	Electronic mail address	Website	Role																					
European Environment Agency		copernicus@eea.europa.eu	<a href="https://land.copernicus.eu">https://land.copernicus.eu</a>	Distributor																					
European Environment Agency		copernicus@eea.europa.eu	<a href="https://land.copernicus.eu">https://land.copernicus.eu</a>	Custodian																					
European Environment Agency		copernicus@eea.europa.eu	<a href="https://land.copernicus.eu">https://land.copernicus.eu</a>	Point of contact																					

### Point of contact

No information provided.

### Point of contact

No information provided.

<b>Maintenance and update frequency</b>	Continual
<b>GEMET - INSPIRE themes, version 1.0</b>	<ul style="list-style-type: none"> <li>Land use</li> <li>Elevation</li> </ul>
<b>Keywords</b>	
<b>Continents, countries, sea regions of the world.</b>	<ul style="list-style-type: none"> <li>United Kingdom</li> <li>Iceland</li> <li>Türkiye</li> </ul>

	<ul style="list-style-type: none"> <li>• Serbia</li> <li>• Bosnia and Herzegovina</li> <li>• Kosovo (UNSCR 1244/99)</li> <li>• North Macedonia</li> <li>• Albania</li> <li>• Norway</li> <li>• Switzerland</li> <li>• Montenegro</li> <li>• EU27 (from 2020)</li> </ul>
<b>Keywords</b>	
<b>GEMET</b>	<ul style="list-style-type: none"> <li>• land cover</li> <li>• building</li> <li>• landscape alteration</li> <li>• urban area</li> <li>• model</li> <li>• land use</li> </ul>
<a href="#">Spatial scope</a>	<ul style="list-style-type: none"> <li>• <a href="#">European</a></li> </ul>
<b>EEA topics</b>	<ul style="list-style-type: none"> <li>• Land use</li> </ul>
<b>EEA Management Plan</b>	<ul style="list-style-type: none"> <li>• 2018 3.6.2</li> </ul>
<b>Access constraints</b>	Other restrictions
<b>Other constraints</b>	<a href="#">no limitations to public access</a>
<b>Use constraints</b>	Other restrictions
<b>Other constraints</b>	<p>Access to data is based on a principle of full, open and free access as established by the Copernicus data and information policy Regulation (EU) No 1159/2013 of 12 July 2013. This regulation establishes registration and licensing conditions for GMES/Copernicus users.</p> <p>Free, full and open access to this data set is made on the conditions that:</p> <ol style="list-style-type: none"> <li>1. When distributing or communicating Copernicus dedicated data and Copernicus service information to the public, users shall inform the public of the source of that data and information.</li> <li>2. Users shall make sure not to convey the impression to the public that the user's activities are officially endorsed by the Union.</li> <li>3. Where that data or information has been adapted or modified, the user shall clearly state this.</li> <li>4. The data remain the sole property of the European Union. Any information and data produced in the framework of the action shall be the sole property of the European Union. Any communication and publication by the beneficiary shall acknowledge that the data were produced "with funding by the European Union".</li> </ol>
<b>Aggregate Dataset identifier</b>	14c85db6-ac28-4a91-ad9c-e4356733976d
<b>Association Type</b>	revision of
<b>Spatial representation type</b>	Grid
<b>Distance</b>	10 m

Language of dataset	English
Character set	UTF8
Topic category	<ul style="list-style-type: none"><li>• Environment</li><li>• Imagery base maps earth cover</li><li>• Elevation</li></ul>
Begin date	2011-01-01
End date	2014-12-31

	N		S		E		W
--	---	--	---	--	---	--	---



Additional Information	Spatial Resolution information: The Minimum Mapping Width is 10 m		
Coordinate reference system identifier	<a href="#">EPSG:3035</a>		
Distribution format	<ul style="list-style-type: none"> <li>GeoTIFF ( 1.1 )</li> </ul>		
OnLine resource	<b>Protocol</b>  OGC:WMS  ESRI:REST  WWW:LINK-1.0-http--link	<b>Linkage</b>  <a href="https://copernicus.discomap.eea.europa.eu/arcgis/services/UrbanAtlas/UA_BuildingHeights_2012_10m/ImageServer/WMSServer?request=GetCapabilities&amp;service=WMS">https://copernicus.discomap.eea.europa.eu/arcgis/services/UrbanAtlas/UA_BuildingHeights_2012_10m/ImageServer/WMSServer?request=GetCapabilities&amp;service=WMS</a> <a href="https://copernicus.discomap.eea.europa.eu/arcgis/rest/services/UrbanAtlas/UA_BuildingHeights_2012_10m/ImageServer">https://copernicus.discomap.eea.europa.eu/arcgis/rest/services/UrbanAtlas/UA_BuildingHeights_2012_10m/ImageServer</a> <a href="https://land.copernicus.eu/en/products/urban-atlas/building-height-2012#Download">https://land.copernicus.eu/en/products/urban-atlas/building-height-2012#Download</a>	<b>Name</b>          Download (requires authentication)
Hierarchy level	Dataset		

Conformance result

Date (Publication)	2010-12-08
Explanation	See the referenced specification

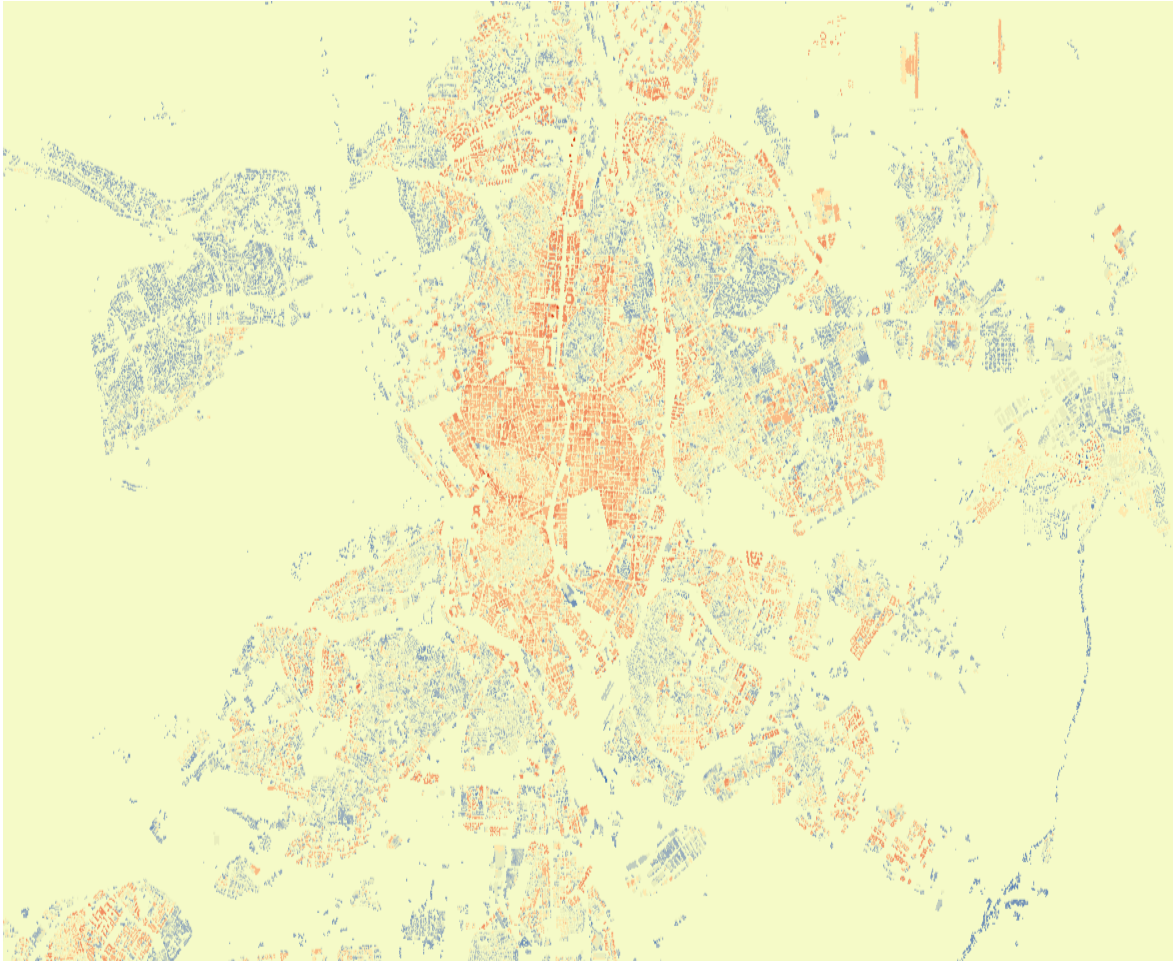
Statement	<p>This product is generated based on IRS-P5 stereo images acquired as close as possible to the defined reference year. Based on these stereo images a digital surface model is generated. Afterwards a digital terrain model is derived from the DSM with different filter algorithms and the assistance of Urban Atlas 2012 datasets. The calculation of the normalized DSM is done by a simple subtraction of the DTM from the DSM. The final product is then clipped based on UA 2012 building blocks and fully quality controlled.</p> <p>This update marks the extension of previously published cities Amsterdam, Athens, Berlin, Copenhagen, London and Madrid (version 2.0). Capitals from countries not included in the previous version (Türkiye and EEA cooperating countries) have also been added. The rest of the core cities (capitals) remain altered (version 1.0).</p> <p>Information about the validation of this product is available here: <a href="https://land.copernicus.eu/user-corner/technical-library/building-heights-2012-validation-report">https://land.copernicus.eu/user-corner/technical-library/building-heights-2012-validation-report</a></p>
-----------	--

Metadata

File identifier	55854f4a-19b7-49f3-abd3-4f974a683d6f <a href="#">XML</a>
Metadata language	English
Character set	UTF8
Hierarchy level	Dataset
Date stamp	2024-02-06T10:00:19.293Z

Metadata standard name	ISO 19115/19139			
Metadata standard version	1.0			
Metadata author	Organisation name	Individual name	Electronic mail address	Website Role
	European Environment Agency		sdi@eea.europa.eu	Point of contact

Overviews



Provided by

