

## Riparian Zones Land Cover/Land Use 2012 (vector), Europe, 6-yearly, Dec. 2021

Riparian zones represent transitional areas occurring between land and freshwater ecosystems, characterised by distinctive hydrology, soil and biotic conditions and strongly influenced by the stream water. They provide a wide range of riparian functions (e.g. chemical filtration, flood control, bank stabilization, aquatic life and riparian wildlife support, etc.) and ecosystem services.

The Riparian Zones products support the objectives of several European legal acts and policy initiatives, such as the EU Biodiversity Strategy to 2020, the Habitats and Birds Directives and the Water Framework Directive.

This metadata refers to the Riparian Zones 2012 Land Cover/Land Use (LC/LU), which LC/LU classification is tailored to the needs of biodiversity monitoring in a variable buffer zone of selected rivers (Strahler levels 2-9 derived from EU-Hydro) for the reference year 2012. LC/LU is extracted from Very High Resolution (VHR) satellite data and other available data in a buffer zone of selected rivers for supporting biodiversity monitoring and mapping and assessment of ecosystems and their services. The class definitions follow the pre-defined nomenclature on the basis of Mapping and Assessment of Ecosystems and their Services (MAES) typology of ecosystems (Level 1 to Level 4) and CORINE Land Cover. The classification provides 55 distinct thematic classes with a Minimum Mapping Unit (MMU) of 0.5 ha and a Minimum Mapping Width (MMW) of 10 m. The nomenclature has been revised in 2020 with the aim to harmonize the products of the local components (mainly Riparian Zones and NATURA 2000 products) while maintaining user requirements for both products. A revised version of the Riparian Zones 2012 has been subsequently released in December 2021, together with the reference year 2018.

The production of the Riparian Zones products was coordinated by the European Environment Agency in the frame of the EU Copernicus programme.

### Simple

Date (Creation)	2021-12-14				
Date (Publication)	2021-12-15				
Edition	01.00				
Citation identifier	copernicus_v_3035_10_m_rz-lclu-2012_p_2010-2014_v01_r00				
Citation identifier	DAT-191-en				
Code	<a href="https://doi.org/10.2909/6aeb0dea-9d8c-42bd-a357-cd859f148929">10.2909/6aeb0dea-9d8c-42bd-a357-cd859f148929</a>				
Point of contact	Organisation name	Individual name	Electronic mail address	Website	Role
	European Environment Agency		copernicus@eea.europa.eu	<a href="https://land.copernicus.eu">https://land.copernicus.eu</a>	Distributor
	European Environment Agency		copernicus@eea.europa.eu	<a href="https://land.copernicus.eu">https://land.copernicus.eu</a>	Custodian
	European Environment Agency		copernicus@eea.europa.eu	<a href="https://land.copernicus.eu">https://land.copernicus.eu</a>	Point of contact

### Point of contact

No information provided.

<b>Maintenance and update frequency</b>	Continual
<b>GEMET - INSPIRE themes, version 1.0</b>	<ul style="list-style-type: none"> <li>Land cover</li> </ul>
<b>Keywords</b>	
<b>Continents, countries, sea regions of the world.</b>	<ul style="list-style-type: none"> <li>United Kingdom</li> <li>EEA38 (from 2020)</li> </ul>

<b>Keywords</b>	
<b>GEMET</b>	<ul style="list-style-type: none"> <li>• tree</li> <li>• ecosystem services</li> <li>• land cover</li> <li>• land use</li> <li>• hedge</li> <li>• landscape alteration</li> <li>• riparian zone</li> </ul>
<b><a href="#">Spatial scope</a></b>	<ul style="list-style-type: none"> <li>• <a href="#">European</a></li> </ul>
<b>EEA topics</b>	<ul style="list-style-type: none"> <li>• Land use</li> </ul>
<b>EEA Management Plan</b>	<ul style="list-style-type: none"> <li>• 2017 3.6.2</li> </ul>
<b>Access constraints</b>	Other restrictions
<b>Other constraints</b>	<a href="#">no limitations to public access</a>
<b>Use constraints</b>	Other restrictions
<b>Other constraints</b>	<p>Access to data is based on a principle of full, open and free access as established by the Copernicus data and information policy Regulation (EU) No 1159/2013 of 12 July 2013. This regulation establishes registration and licensing conditions for GMES/Copernicus users.</p> <p>Free, full and open access to this data set is made on the conditions that:</p> <ol style="list-style-type: none"> <li>1. When distributing or communicating Copernicus dedicated data and Copernicus service information to the public, users shall inform the public of the source of that data and information.</li> <li>2. Users shall make sure not to convey the impression to the public that the user's activities are officially endorsed by the Union.</li> <li>3. Where that data or information has been adapted or modified, the user shall clearly state this.</li> <li>4. The data remain the sole property of the European Union. Any information and data produced in the framework of the action shall be the sole property of the European Union. Any communication and publication by the beneficiary shall acknowledge that the data were produced "with funding by the European Union".</li> </ol>
<b>Aggregate Datasetidentifier</b>	7afc7ba5-9b08-4983-9e6b-009b003d2cff
<b>Association Type</b>	revision of
<b>Aggregate Datasetidentifier</b>	393359a7-7ebd-4a52-80ac-1a18d5f3db9c
<b>Association Type</b>	Cross reference
<b>Spatial representation type</b>	Vector
<b>Distance</b>	10 10 m
<b>Language of dataset</b>	English
<b>Character set</b>	UTF8
<b>Topic category</b>	<ul style="list-style-type: none"> <li>• Environment</li> <li>• Imagery base maps earth cover</li> </ul>
<b>Begin date</b>	2010-01-01

End date

2014-12-31

	N		S		E		W
--	---	--	---	--	---	--	---



Additional Information	Spatial Resolution information: The Minimum Mapping Width is 10 m		
Coordinate reference system identifier	<a href="#">EPSG:3035</a>		
Distribution format	<ul style="list-style-type: none"> <li>SHP ( 1.1 )</li> </ul>		
OnLine resource	<b>Protocol</b> WWW:LINK-1.0-http--link  OGC:WMS  ESRI:REST  WWW:LINK-1.0-http--link	<b>Linkage</b> <a href="https://land.copernicus.eu/local/riparian-zones/riparian-zones-2012">https://land.copernicus.eu/local/riparian-zones/riparian-zones-2012</a> <a href="https://copernicus.discomap.eea.europa.eu/arcgis/services/RiparianZones/RZ_2012/MapServer/WMServer?request=GetCapabilities&amp;service=WMS">https://copernicus.discomap.eea.europa.eu/arcgis/services/RiparianZones/RZ_2012/MapServer/WMServer?request=GetCapabilities&amp;service=WMS</a> <a href="https://copernicus.discomap.eea.europa.eu/arcgis/rest/services/RiparianZones/RZ_2012/MapServer">https://copernicus.discomap.eea.europa.eu/arcgis/rest/services/RiparianZones/RZ_2012/MapServer</a> <a href="https://land.copernicus.eu/en/products/riparian-zones/rz-land-cover-land-use-2012#Download">https://land.copernicus.eu/en/products/riparian-zones/rz-land-cover-land-use-2012#Download</a>	<b>Name</b>         Download (requires authentication)
OnLine resource	<b>Protocol</b> DOI	<b>Linkage</b> <a href="https://doi.org/10.2909/6aeb0dea-9d8c-42bd-a357-cd859f148929">https://doi.org/10.2909/6aeb0dea-9d8c-42bd-a357-cd859f148929</a>	<b>Name</b>
Hierarchy level	Dataset		

## Conformance result

Date (Publication)	2010-12-08
Explanation	See the referenced specification

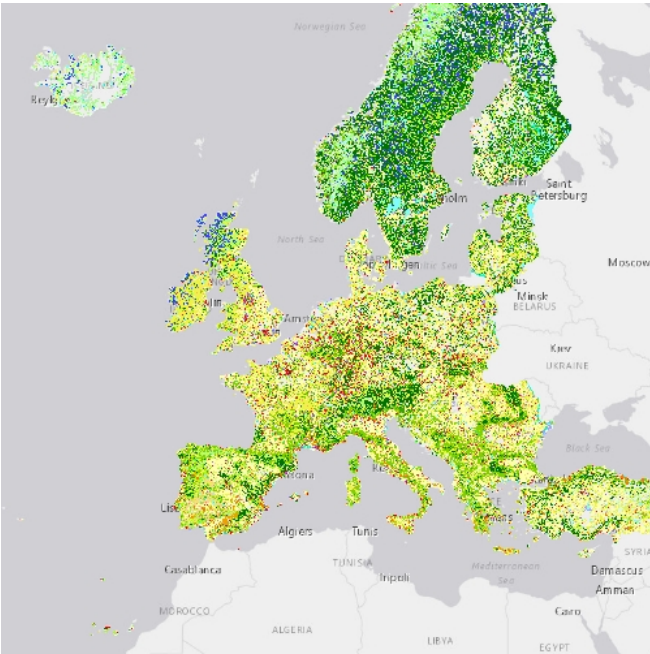
Statement	<p>Computer assisted visual refinement of the status 2012 data based on the precursor LC/LU product for reference year 2012. The main dataset for visual image interpretation was the DWH_MG2b_CORE_03 dataset (Optical VHR2 coverage over EU 2011-2013 and Riparian zones), mainly consisting of 1.5m VHR2 SPOT-6 and 2.5m VHR2 SPOT-5 HRG and 2m Pleiades satellite data. Subsequently, intersection of classification results with additional data (Urban Atlas 2012) was performed.</p> <p>The first version of the LC/LU dataset (produced in 2015 under the GMES Initial Operations phase) related to rivers pertaining to Strahler levels 3 to 8. The pre-defined nomenclature on the basis of the MAES typology of ecosystems was composed of 79 classes. In 2017, to allow for a harmonisation of the nomenclatures applied to the different local component products (Costal Zones and N2K), a revision of the nomenclature was undertaken which resulted in a reduction of classes (down to 56). A LC/LU dataset covering rivers pertaining to Strahler level 2 was produced applying the new nomenclature and the previous dataset (covering Strahler levels 3 to 8) was re-coded to the new nomenclature. The two datasets were merged together and a harmonised dataset covering rivers pertaining to Strahler levels 2 to 9 was produced. In 2020 an additional exercise of harmonisation of the nomenclature (re-naming and re-coding) took place. The current LC/LU layer differentiates 55 thematic LC/LU classes covering Strahler levels 2 to 9 for the reference year 2012.</p>
-----------	--

	Positional Accuracy: less than 5 m (according to geo-location accuracy of satellite imagery delivered by ESA: less than 5m RMSE). Thematic accuracy (area-corrected Overall Accuracy) 85% (at CODE_4 level). Accuracy Assessment approach: Stratified Random Point Sampling. Interpretation of sampling points has been performed on the best available reference data.
Source	<ul style="list-style-type: none"> <li></li> </ul>

### Metadata

File identifier	6aeb0dea-9d8c-42bd-a357-cd859f148929 <a href="#">XML</a>			
Metadata language	English			
Character set	UTF8			
Hierarchy level	Dataset			
Date stamp	2023-08-15T14:58:00.243Z			
Metadata standard name	ISO 19115/19139			
Metadata standard version	1.0			
Metadata author	<b>Organisation name</b>  European Environment Agency		<b>Individual name</b>  	<b>Electronic mail address</b>  sdi@eea.europa.eu  <b>Website Role</b>  Point of contact

### Overviews



Provided by

