

## N2K 2018 (vector), Europe, 6-yearly, Jul. 2021

This metadata refers to CLMS N2K 2018 product, the Copernicus Land Cover/Land Use (LC/LU) status map, with 2018 as reference year for the classification, tailored to the needs of biodiversity monitoring in selected Natura2000 sites: 4790 sites of natural and semi-natural grassland formations listed in Annex I of the Habitats Directive, including a 2 km buffer zone surrounding the sites and covering an area of 631.820 km<sup>2</sup> across Europe (EU27, the United Kingdom and Switzerland). The product includes three Emerald sites in Switzerland. LC/LU has been extracted from VHR satellite data and other available data.

The production of N2K updates was coordinated by the European Environment Agency (EEA) in the frame of the EU Copernicus programme.

You can read more about the product here: <https://land.copernicus.eu/en/products/n2k/n2k-2018>.

### Simple

<b>Date (Creation)</b>	2021-07-16				
<b>Date (Publication)</b>	2021-07-16				
<b>Edition</b>	01.00				
<b>Citation identifier</b>	copernicus_v_3035_10_m_n2k-2018_p_2017-2019_v01_r00				
<b>Citation identifier</b>	DAT-192-en				
<b>Code</b>	<a href="https://doi.org/10.2909/7d3b6dde-5884-45ee-82b2-611e7b2efd1f">10.2909/7d3b6dde-5884-45ee-82b2-611e7b2efd1f</a>				
<b>Point of contact</b>	<b>Organisation name</b>	<b>Individual name</b>	<b>Electronic mail address</b>	<b>Website</b>	<b>Role</b>
	European Environment Agency		copernicus@eea.europa.eu	<a href="https://land.copernicus.eu">https://land.copernicus.eu</a>	Distributor
	European Environment Agency		copernicus@eea.europa.eu	<a href="https://land.copernicus.eu">https://land.copernicus.eu</a>	Custodian
	European Environment Agency		copernicus@eea.europa.eu	<a href="https://land.copernicus.eu">https://land.copernicus.eu</a>	Point of contact

### Point of contact

No information provided.

<b>Maintenance and update frequency</b>	Continual
<b>GEMET - INSPIRE themes, version 1.0</b>	<ul style="list-style-type: none"> <li>Land cover</li> <li>Protected sites</li> </ul>
<b>Keywords</b>	
<b>Continents, countries, sea regions of the world.</b>	<ul style="list-style-type: none"> <li>Switzerland</li> <li>United Kingdom</li> <li>EU27 (from 2020)</li> </ul>
<b>Keywords</b>	
<b>GEMET</b>	<ul style="list-style-type: none"> <li>protected area</li> <li>natural areas protection</li> </ul>

	<ul style="list-style-type: none"> <li>• habitat</li> <li>• natural area</li> <li>• landscape alteration</li> <li>• land use</li> <li>• species</li> </ul>
<b>Spatial scope</b>	<ul style="list-style-type: none"> <li>• <a href="#">European</a></li> </ul>
<b>EEA topics</b>	<ul style="list-style-type: none"> <li>• Biodiversity</li> <li>• Land use</li> </ul>
<b>EEA Management Plan</b>	<ul style="list-style-type: none"> <li>• 2017 3.6.2</li> </ul>

## Resource constraints

No information provided.

<b>Access constraints</b>	Other restrictions
<b>Other constraints</b>	<a href="#">no limitations to public access</a>
<b>Use constraints</b>	Other restrictions
<b>Other constraints</b>	<p>Access to data is based on a principle of full, open and free access as established by the Copernicus data and information policy Regulation (EU) No 1159/2013 of 12 July 2013. This regulation establishes registration and licensing conditions for GMES/Copernicus users.</p> <p>Free, full and open access to this data set is made on the conditions that:</p> <ol style="list-style-type: none"> <li>1. When distributing or communicating Copernicus dedicated data and Copernicus service information to the public, users shall inform the public of the source of that data and information.</li> <li>2. Users shall make sure not to convey the impression to the public that the user's activities are officially endorsed by the Union.</li> <li>3. Where that data or information has been adapted or modified, the user shall clearly state this.</li> <li>4. The data remain the sole property of the European Union. Any information and data produced in the framework of the action shall be the sole property of the European Union. Any communication and publication by the beneficiary shall acknowledge that the data were produced "with funding by the European Union".</li> </ol>
<b>Spatial representation type</b>	Vector
<b>Distance</b>	10 10 m
<b>Language of dataset</b>	English
<b>Character set</b>	UTF8
<b>Topic category</b>	<ul style="list-style-type: none"> <li>• Environment</li> <li>• Imagery base maps earth cover</li> </ul>
<b>Begin date</b>	2017-01-01
<b>End date</b>	2019-12-31



<b>Additional Information</b>	Spatial Resolution information: The Minimum Mapping Width is 10 m		
<b>Coordinate reference system identifier</b>	<a href="#">EPSG:3035</a>		
<b>Distribution format</b>	<ul style="list-style-type: none"> <li>• GDB ( 1.1 )</li> <li>• Spatialite ( )</li> </ul>		
<b>OnLine resource</b>	<b>Protocol</b>	<b>Linkage</b>	<b>Name</b>
	ESRI:REST	<a href="https://copernicus.discomap.eea.europa.eu/arcgis/rest/services/Natura2000/N2K_2018/MapServer">https://copernicus.discomap.eea.europa.eu/arcgis/rest/services/Natura2000/N2K_2018/MapServer</a>	
	OGC:WMS	<a href="https://copernicus.discomap.eea.europa.eu/arcgis/services/Natura2000/N2K_2018/MapServer/WMServer?request=GetCapabilities&amp;service=WMS">https://copernicus.discomap.eea.europa.eu/arcgis/services/Natura2000/N2K_2018/MapServer/WMServer?request=GetCapabilities&amp;service=WMS</a>	
	WWW:LINK-1.0-http--link	<a href="https://land.copernicus.eu/en/products/n2k/n2k-2018#Download">https://land.copernicus.eu/en/products/n2k/n2k-2018#Download</a>	Download (requires authentication)
<b>OnLine resource</b>	<b>Protocol</b>	<b>Linkage</b>	<b>Name</b>
	DOI	<a href="https://doi.org/10.2909/7d3b6dde-5884-45ee-82b2-611e7b2efd1f">https://doi.org/10.2909/7d3b6dde-5884-45ee-82b2-611e7b2efd1f</a>	
<b>Hierarchy level</b>	Dataset		

## Conformance result

<b>Date (Publication)</b>	2010-12-08
<b>Explanation</b>	See the referenced specification

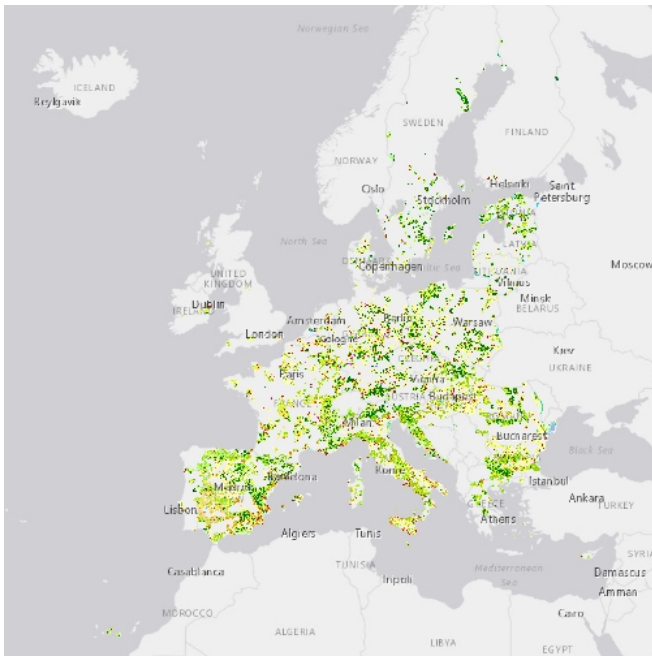
<b>Statement</b>	<p>Generation of a Land Cover/Land Use (LC/LU) dataset by visual image interpretation and delineation based on Very High Resolution (VHR) satellite data from 2018 ±1 year. Additional in-situ and ancillary datasets relevant for the production were also integrated into the workflow to support the LC/LU analysis. The classification provides 55 distinct thematic classes. The class definitions follow a pre-defined nomenclature based on the Mapping and Assessment of Ecosystems and their Services (MAES) typology of ecosystems (at level 1) and are further harmonised with Corine Land Cover and adapted to the specific characteristics of grasslands habitats (levels 2 to 4). The Minimum Mapping Unit (MMU) is 0.5 ha and the Minimum Mapping Width (MMW) is 10 m. The positional accuracy is less than 5 m (according to geo-location accuracy of satellite imagery delivered by ESA: less than 5m RMSE). Producer's accuracy assessment approach: stratified random point sampling. Interpretation of sampling points was performed on the best available reference data. The overall accuracy is higher than 85%.</p>
------------------	---

## Metadata

<b>File identifier</b>	7d3b6dde-5884-45ee-82b2-611e7b2efd1f <a href="#">XML</a>
------------------------	--

<b>Metadata language</b>	English		
<b>Character set</b>	UTF8		
<b>Hierarchy level</b>	Dataset		
<b>Date stamp</b>	2024-02-06T16:45:22.692Z		
<b>Metadata standard name</b>	ISO 19115/19139		
<b>Metadata standard version</b>	1.0		
<b>Metadata author</b>	<b>Organisation name</b>	<b>Individual name</b>	<b>Electronic mail address</b> <b>Website</b> <b>Role of contact</b>
	European Environment Agency		sdi@eea.europa.eu Point of contact

## Overviews



Provided by

