

## N2K 2018 (vector), Europe, 6-yearly, Jul. 2021

This metadata refers to CLMS N2K 2018 product, the Copernicus Land Cover/Land Use (LC/LU) status map, with 2018 as reference year for the classification, tailored to the needs of biodiversity monitoring in selected Natura2000 sites: 4790 sites of natural and semi-natural grassland formations listed in Annex I of the Habitats Directive, including a 2 km buffer zone surrounding the sites and covering an area of 631.820 km² across Europe (EU27, the United Kingdom and Switzerland). The product includes three Emerald sites in Switzerland. LC/LU has been extracted from VHR satellite data and other available data.

The production of N2K updates was coordinated by the European Environment Agency (EEA) in the frame of the EU Copernicus programme.

You can read more about the product here: <https://land.copernicus.eu/en/products/n2k/n2k-2018>.

### Simple

Date (Creation)	2021-07-16				
Date (Publication)	2021-07-16				
Edition	01.00				
Citation identifier	copernicus_v_3035_10_m_n2k-2018_p_2017-2019_v01_r00				
Citation identifier	DAT-192-en				
Code	<a href="https://land.copernicus.eu/en/products/n2k/n2k-2018">10.2909/7d3b6dde-5884-45ee-82b2-611e7b2efd1f</a>				
Point of contact	Organisation name	Individual name	Electronic mail address	Website	Role
	European Environment Agency		<a href="mailto:copernicus@eea.europa.eu">copernicus@eea.europa.eu</a>	<a href="https://land.copernicus.eu">https://land.copernicus.eu</a>	Distributor
	European Environment Agency		<a href="mailto:copernicus@eea.europa.eu">copernicus@eea.europa.eu</a>	<a href="https://land.copernicus.eu">https://land.copernicus.eu</a>	Custodian
	European Environment Agency		<a href="mailto:copernicus@eea.europa.eu">copernicus@eea.europa.eu</a>	<a href="https://land.copernicus.eu">https://land.copernicus.eu</a>	Point of contact

### Point of contact

No information provided.

Maintenance and update frequency	Continual
GEMET - INSPIRE themes, version 1.0	<ul style="list-style-type: none"> <li>Land cover</li> <li>Protected sites</li> </ul>
Keywords	
Continents, countries, sea regions of the world.	<ul style="list-style-type: none"> <li>Switzerland</li> <li>United Kingdom</li> <li>EU27 (from 2020)</li> </ul>
Keywords	
GEMET	<ul style="list-style-type: none"> <li>protected area</li> <li>natural areas protection</li> </ul>

	<ul style="list-style-type: none"> <li>• habitat</li> <li>• natural area</li> <li>• landscape alteration</li> <li>• land use</li> <li>• species</li> </ul>
<a href="#">Spatial scope</a>	<ul style="list-style-type: none"> <li>• <a href="#">European</a></li> </ul>
EEA topics	<ul style="list-style-type: none"> <li>• Biodiversity</li> <li>• Land use</li> </ul>
EEA Management Plan	<ul style="list-style-type: none"> <li>• 2017 3.6.2</li> </ul>

## Resource constraints

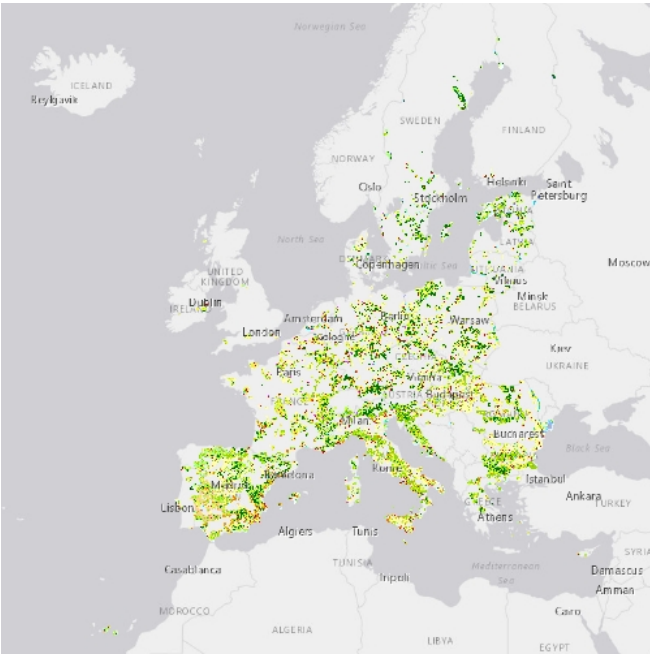
No information provided.

Access constraints	Other restrictions
Other constraints	<a href="#">no limitations to public access</a>
Use constraints	Other restrictions
Other constraints	<p>Access to data is based on a principle of full, open and free access as established by the Copernicus data and information policy Regulation (EU) No 1159/2013 of 12 July 2013. This regulation establishes registration and licensing conditions for GMES/Copernicus users.</p> <p>Free, full and open access to this data set is made on the conditions that:</p> <ol style="list-style-type: none"> <li>1. When distributing or communicating Copernicus dedicated data and Copernicus service information to the public, users shall inform the public of the source of that data and information.</li> <li>2. Users shall make sure not to convey the impression to the public that the user's activities are officially endorsed by the Union.</li> <li>3. Where that data or information has been adapted or modified, the user shall clearly state this.</li> <li>4. The data remain the sole property of the European Union. Any information and data produced in the framework of the action shall be the sole property of the European Union. Any communication and publication by the beneficiary shall acknowledge that the data were produced "with funding by the European Union".</li> </ol>
Spatial representation type	Vector
Distance	10 10 m
Language of dataset	English
Character set	UTF8
Topic category	<ul style="list-style-type: none"> <li>• Environment</li> <li>• Imagery base maps earth cover</li> </ul>
Begin date	2017-01-01
End date	2019-12-31



Metadata language	English		
Character set	UTF8		
Hierarchy level	Dataset		
Date stamp	2024-02-06T16:45:22.692Z		
Metadata standard name	ISO 19115/19139		
Metadata standard version	1.0		
Metadata author	Organisation name	Individual name	Electronic mail addressWebsite Role
	European Environment Agency		sdi@eea.europa.euPoint of contact

Overviews



Provided by

