

Small Woody Features 2018 (raster 100 m), Europe, 3-yearly, May 2023

High Resolution land cover characteristics for the 2018 reference year. Small woody landscape features are important vectors of biodiversity and provide information on fragmentation of habitats with a direct potential for restoration while also providing a link to hazard protection and green infrastructure, amongst others. VHR_IMAGE_2018 made available in the ESA Copernicus DWH will be the main data source for the detection of small woody features identifiable within the given image resolution. The Small Woody Features (SWFs) layer contains woody linear and patchy elements but will not be further differentiated into trees, hedges, bushes and scrub. The spatial pattern shall be limited to linear structures and isolated patches on the basis of geometric characteristics.

Simple

Date (Publication)	2023-05-10																							
Edition	01.00																							
Citation identifier	copernicus_r_3035_100_m_swf-2018_p_2017-2019_v01_r00																							
Code	10.2909/89eeb6c1-ee72-44b3-b0e3-83c74f2c306d																							
Point of contact	<table> <tr> <th>Organisation name</th><th>Individual name</th><th>Electronic mail address</th><th>Website</th><th>Role</th></tr> <tr> <td>European Environment Agency</td><td></td><td>copernicus@eea.europa.eu</td><td>https://land.copernicus.eu</td><td>Distributor</td></tr> <tr> <td>European Environment Agency</td><td></td><td>copernicus@eea.europa.eu</td><td>https://land.copernicus.eu</td><td>Custodian</td></tr> <tr> <td>European Environment Agency</td><td></td><td>copernicus@eea.europa.eu</td><td>https://land.copernicus.eu</td><td>Point of contact</td></tr> </table>	Organisation name	Individual name	Electronic mail address	Website	Role	European Environment Agency		copernicus@eea.europa.eu	https://land.copernicus.eu	Distributor	European Environment Agency		copernicus@eea.europa.eu	https://land.copernicus.eu	Custodian	European Environment Agency		copernicus@eea.europa.eu	https://land.copernicus.eu	Point of contact			
Organisation name	Individual name	Electronic mail address	Website	Role																				
European Environment Agency		copernicus@eea.europa.eu	https://land.copernicus.eu	Distributor																				
European Environment Agency		copernicus@eea.europa.eu	https://land.copernicus.eu	Custodian																				
European Environment Agency		copernicus@eea.europa.eu	https://land.copernicus.eu	Point of contact																				

Point of contact

No information provided.

Point of contact

No information provided.

Maintenance and update frequency	Continual
GEMET - INSPIRE themes, version 1.0	<ul style="list-style-type: none"> Land cover
Keywords	
Continents, countries, sea regions of the world.	<ul style="list-style-type: none"> EEA39
Keywords	
GEMET	<ul style="list-style-type: none"> land cover land use landscape land landscape alteration
Spatial scope	<ul style="list-style-type: none"> European
EEA topics	<ul style="list-style-type: none"> Land use

Access constraints	Other restrictions
Other constraints	no limitations to public access
Use constraints	Other restrictions
Other constraints	<p>Access to data is based on a principle of full, open and free access as established by the Copernicus data and information policy Regulation (EU) No 1159/2013 of 12 July 2013. This regulation establishes registration and licensing conditions for GMES/Copernicus users.</p> <p>Free, full and open access to this data set is made on the conditions that:</p> <ol style="list-style-type: none"> 1. When distributing or communicating Copernicus dedicated data and Copernicus service information to the public, users shall inform the public of the source of that data and information. 2. Users shall make sure not to convey the impression to the public that the user's activities are officially endorsed by the Union. 3. Where that data or information has been adapted or modified, the user shall clearly state this. 4. The data remain the sole property of the European Union. Any information and data produced in the framework of the action shall be the sole property of the European Union. Any communication and publication by the beneficiary shall acknowledge that the data were produced "with funding by the European Union".
Spatial representation type	Grid
Distance	100 m
Language of dataset	English
Character set	UTF8
Topic category	<ul style="list-style-type: none"> • Environment • Imagery base maps earth cover

	N		S		E		W
--	---	--	---	--	---	--	---



Begin date	2017-01-01		
End date	2019-12-31		
Coordinate reference system identifier	EPSG:3035		
Distribution format	<ul style="list-style-type: none"> GeoTIFF () 		
OnLine resource	Protocol	Linkage	Name
	EEA:FOLDERPATH	https://sdi.eea.europa.eu/webdav/datastore/public/copernicus_r_3035_100_m_swf-2018_p_2017-2019_v01_r00/	
	WWW:URL	https://sdi.eea.europa.eu/data/89eeb6c1-ee72-44b3-b0e3-83c74f2c306d	Direct download
	WWW:LINK-1.0-http-link	https://land.copernicus.eu/pan-european/high-resolution-layers/small-woody-features/small-woody-features-2018?tab=download	Download (requires authentication)
OnLine resource	Protocol	Linkage	Name
	DOI	https://doi.org/10.2909/89eeb6c1-ee72-44b3-b0e3-83c74f2c306d	

OnLine resource

No information provided.

Hierarchy level	Dataset
------------------------	---------

Conformance result

Date (Publication)	
Explanation	See the referenced specification

Statement	<p>The HRL Small Woody Feature Raster Product is primarily based on a supervised classification of satellite image time-series from VHR_IMAGE_2018 acquired from May 2017 to September 2019.</p> <p>Geometric specifications: The Pixel resolution for the status product is 5m x 5 m. MMU, MML and MMW is applied on the vector product from which the raster product is derived. This aggregated product has a spatial resolution of 100 x 100 m.</p> <p>Vector product: For patchy structures of trees and scrub the MMU is >200 m2 (size limit of 50 000m2). The MMW for linear structures /elements is < 30m. The MML for linear structures/elements is of >30 m length.</p> <p>The positional accuracy is less than 5 m.</p>
------------------	---

Quality assurance follows the ISO 9001:2015 standards for Quality Management and comprises of dedicated procedures of quality checks (QA breakpoints) during implementation of the production chain, in order to keep persistent control over the various stages of production, assure fitness-for-purpose of the end-products and that all quality requirements are fulfilled. Priority has been given to the target thematic accuracy to be achieved by each product, as well as to the issues of product consistency (spatial, thematic, temporal) and homogeneity.

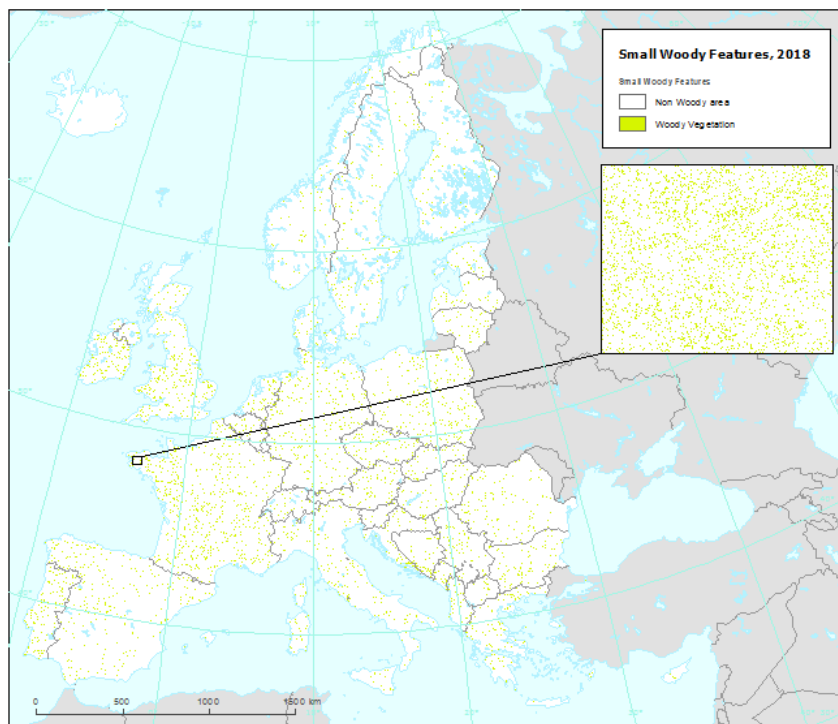
Quality Assessment: The quality assessment has been performed according to INSPIRE Data Specifications. The data quality elements considered are: (i) Completeness, (ii) Logical Consistency, (iii) positional accuracy, (iv) Thematic Accuracy, (v) Temporal quality and (vi) Usability.

Accuracy assessment approach: stratified random point sampling. Interpretation of sampling points has been performed on the best available reference data. The general accuracy level of the HRL SWF products shall be in the order of 80 % for Overall thematic Accuracy, User's Accuracy and Producer's Accuracy.

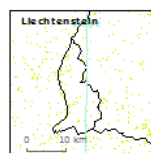
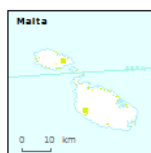
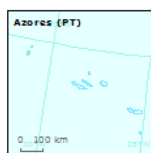
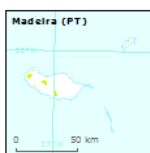
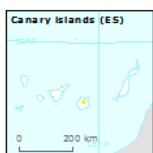
Metadata

File identifier	89eeb6c1-ee72-44b3-b0e3-83c74f2c306d XML		
Metadata language	English		
Character set	UTF8		
Hierarchy level	Dataset		
Date stamp	2024-03-04T12:53:59.994Z		
Metadata standard name	ISO 19115/19139		
Metadata standard version	1.0		
Metadata author	Organisation name	Individual name	Electronic mail addressWebsite Role
	European Environment Agency		sdi@eea.europa.euPoint of contact

Overviews



Reference data: © EuroGeographics, © FAO (UN), © TurkStat Source: European Commission - Eurostat/GISCO



Provided by

