

## Satellite Image Mosaic RGB at the Key Landscapes for Conservation borders (raster) - version 1, Feb. 2023

This metadata refers to the Satellite Image Mosaics RGB generated over the Key Landscapes for Conservation areas (KLC areas in Africa, Indonesia and Caribbean) in the framework of the Copernicus Global Land Hot Spot Mapping (C-GL-HSM) contract under the coordination of JRC.

The KLC areas for which mosaics are included in the dataset are the following:

Caribbean (CAR\_01) specific reference time: 2015-2019  
 Comoe-Mole (WAF\_05) specific reference time: 2014-2018  
 Cross River-Takamanda-Mt Cameroon-Korup (CAF\_01) specific reference time: 2013-2019  
 Garamba-Lantoto-Bili-Uere-Chinko-Southern (CAF\_05) specific reference time: 2014-2018  
 Great Limpopo (SAF\_02) specific reference time: 2014-2018  
 Grand Virunga (CAF\_02) specific reference time: 2014-2018  
 Kundelungu-Upemba (CAF\_11) specific reference time: 2014-2018  
 Lomami (CAF\_15) specific reference time: 2013-2019  
 Luangwa (SAF\_14\_15) specific reference time: 2014-2018  
 Madagascar Forests (SAF\_21) specific reference time: 2015-2019  
 Manovo-Gounda-St Floris-Bamingui (CAF\_06) specific reference time: 2013-2019  
 Mbam Djerem (CAF\_16) specific reference time: 2014-2018  
 Niassa-Selous (EAF\_04) specific reference time: 2015-2019  
 Salonga (CAF\_07) specific reference time: 2014-2018  
 Tai-Sapo (WAF\_10) specific reference time: 2014-2018  
 Timor Leste (PAC\_01) specific reference time: 2014-2018  
 WAPOK (WAF\_04) specific reference time: 2015-2019  
 Yangambi (CAF\_99) specific reference time: 2014-2018

### Simple

<b>Date (Creation)</b>	2013-01-01T00:00:00
<b>Date (Publication)</b>	2013-01-01T00:00:00
<b>Edition</b>	01.00
<b>Citation identifier</b>	jrc_v_4326_30_m_c-gl-hsm-klc-borders_p_2013-2019_v01_r00

### Point of contact

No information provided.

### Point of contact

No information provided.

### Point of contact

No information provided.

### Point of contact

No information provided.

<b>Maintenance and update frequency</b>	Not planned
---	-------------

<a href="#">GEMET - INSPIRE themes, version 1.0</a>	<ul style="list-style-type: none"> <li>• <a href="#">Orthoimagery</a></li> <li>• <a href="#">Land cover</a></li> <li>• <a href="#">Human health and safety</a></li> </ul>
<b>Keywords</b>	
<b>Keywords</b>	
<b>GEMET</b>	<ul style="list-style-type: none"> <li>• land cover</li> <li>• mosaic</li> <li>• satellite image</li> <li>• land access</li> <li>• land use</li> <li>• landscape alteration</li> <li>• landscape</li> </ul>
<b>Continents, countries, sea regions of the world.</b>	<ul style="list-style-type: none"> <li>• Africa</li> <li>• Indonesia</li> <li>• Caribbean Sea</li> </ul>
<b>Spatial scope</b>	<ul style="list-style-type: none"> <li>• Regional</li> </ul>
<b>Temporal resolution</b>	<ul style="list-style-type: none"> <li>• Not planned</li> </ul>
<b>EEA topics</b>	<ul style="list-style-type: none"> <li>• Land use</li> <li>• Environmental health impacts</li> </ul>
<b>Access constraints</b>	Other restrictions
<b>Other constraints</b>	<a href="#">no limitations to public access</a>
<b>Use constraints</b>	Other restrictions
<b>Other constraints</b>	<p>Access to data is based on a principle of full, open and free access as established by the Copernicus data and information policy Regulation (EU) No 1159/2013 of 12 July 2013. This regulation establishes registration and licensing conditions for GMES/Copernicus users.</p> <p>Free, full and open access to this data set is made on the conditions that:</p> <ol style="list-style-type: none"> <li>1. When distributing or communicating Copernicus dedicated data and Copernicus service information to the public, users shall inform the public of the source of that data and information.</li> <li>2. Users shall make sure not to convey the impression to the public that the user's activities are officially endorsed by the Union.</li> <li>3. Where that data or information has been adapted or modified, the user shall clearly state this.</li> <li>4. The data remain the sole property of the European Union. Any information and data produced in the framework of the action shall be the sole property of the European Union. Any communication and publication by the beneficiary shall acknowledge that the data were produced "with funding by the European Union".</li> </ol>
<b>Spatial representation type</b>	Grid
<b>Distance</b>	30 30 m
<b>Language of dataset</b>	English

Topic category

- Imagery base maps earth cover

<b>Begin date</b>	2013-01-01		
<b>End date</b>	2019-12-31		
<b>Additional Information</b>	<p>The World Database on Protected Areas (WDPA 2019) has been used in the Copernicus Global Land Hot Spot mapping (C-GL-HSM) contract under the coordination of JRC to obtain statistics on land cover changes inside and outside the protected areas.</p> <p>To see how much of the Key Landscapes for Conservation area is a Protected Area, consult the WMS service found at the Service section of this metadata.</p>		
<b>Coordinate reference system identifier</b>	<a href="#">EPSG:4326</a>		
<b>Distribution format</b>	<ul style="list-style-type: none"> <li>GeoTIFF ( )</li> </ul>		
<b>OnLine resource</b>	<b>Protocol</b>	<b>Linkage</b>	<b>Name</b>
	WWW:LINK-1.0-http--link	<a href="https://hsm.land.copernicus.eu/">https://hsm.land.copernicus.eu/</a>	HotSpot Land Cover Change Explorer
	OGC:WMS	<a href="https://geospatial.jrc.ec.europa.eu/geoserver/hotspots/wms">https://geospatial.jrc.ec.europa.eu/geoserver/hotspots/wms</a>	Cross River-Takamanda-Mt Cameroon-Korup
	WWW:LINK-1.0-http--link	<a href="https://land.copernicus.eu/en/products/clcc-hot-spots/satellite_images#download">https://land.copernicus.eu/en/products/clcc-hot-spots/satellite_images#download</a>	Satellite images
	OGC:WMS	<a href="https://geospatial.jrc.ec.europa.eu/geoserver/hotspots/wms">https://geospatial.jrc.ec.europa.eu/geoserver/hotspots/wms</a>	Caribbean
	OGC:WMS	<a href="https://geospatial.jrc.ec.europa.eu/geoserver/hotspots/wms">https://geospatial.jrc.ec.europa.eu/geoserver/hotspots/wms</a>	Comoe-Mole
	OGC:WMS	<a href="https://geospatial.jrc.ec.europa.eu/geoserver/hotspots/wms">https://geospatial.jrc.ec.europa.eu/geoserver/hotspots/wms</a>	Garamba-Lantoto-Bili-Uere-Chinko-Southern
	OGC:WMS	<a href="https://geospatial.jrc.ec.europa.eu/geoserver/hotspots/wms">https://geospatial.jrc.ec.europa.eu/geoserver/hotspots/wms</a>	Great Limpopo
	OGC:WMS	<a href="https://geospatial.jrc.ec.europa.eu/geoserver/hotspots/wms">https://geospatial.jrc.ec.europa.eu/geoserver/hotspots/wms</a>	Grand Virunga
	OGC:WMS	<a href="https://geospatial.jrc.ec.europa.eu/geoserver/hotspots/wms">https://geospatial.jrc.ec.europa.eu/geoserver/hotspots/wms</a>	Kundelungu-Upemba
	OGC:WMS	<a href="https://geospatial.jrc.ec.europa.eu/geoserver/hotspots/wms">https://geospatial.jrc.ec.europa.eu/geoserver/hotspots/wms</a>	Lomami
	OGC:WMS	<a href="https://geospatial.jrc.ec.europa.eu/geoserver/hotspots/wms">https://geospatial.jrc.ec.europa.eu/geoserver/hotspots/wms</a>	Luangwa
	OGC:WMS	<a href="https://geospatial.jrc.ec.europa.eu/geoserver/hotspots/wms">https://geospatial.jrc.ec.europa.eu/geoserver/hotspots/wms</a>	Madagascar Forests
	OGC:WMS	<a href="https://geospatial.jrc.ec.europa.eu/geoserver/hotspots/wms">https://geospatial.jrc.ec.europa.eu/geoserver/hotspots/wms</a>	Manovo-Gounda-St Floris-Bamingui
	OGC:WMS	<a href="https://geospatial.jrc.ec.europa.eu/geoserver/hotspots/wms">https://geospatial.jrc.ec.europa.eu/geoserver/hotspots/wms</a>	Mbam Djerem
	OGC:WMS	<a href="https://geospatial.jrc.ec.europa.eu/geoserver/hotspots/wms">https://geospatial.jrc.ec.europa.eu/geoserver/hotspots/wms</a>	Niassa-Selous
	OGC:WMS	<a href="https://geospatial.jrc.ec.europa.eu/geoserver/hotspots/wms">https://geospatial.jrc.ec.europa.eu/geoserver/hotspots/wms</a>	Salonga
	OGC:WMS	<a href="https://geospatial.jrc.ec.europa.eu/geoserver/hotspots/wms">https://geospatial.jrc.ec.europa.eu/geoserver/hotspots/wms</a>	Tai-Sapo
	OGC:WMS	<a href="https://geospatial.jrc.ec.europa.eu/geoserver/hotspots/wms">https://geospatial.jrc.ec.europa.eu/geoserver/hotspots/wms</a>	Timor Leste
	OGC:WMS	<a href="https://geospatial.jrc.ec.europa.eu/geoserver/hotspots/wms">https://geospatial.jrc.ec.europa.eu/geoserver/hotspots/wms</a>	WAPOK
	OGC:WMS	<a href="https://geospatial.jrc.ec.europa.eu/geoserver/hotspots/wms">https://geospatial.jrc.ec.europa.eu/geoserver/hotspots/wms</a>	Yangambi
		<a href="https://geospatial.jrc.ec.europa.eu/geoserver/hotspots/wms">https://geospatial.jrc.ec.europa.eu/geoserver/hotspots/wms</a>	

## OnLine resource

No information provided.

<b>Hierarchy level</b>	Dataset
------------------------	---------

## Conformance result

<b>Date (Publication)</b>	2010-12-08
<b>Explanation</b>	See the referenced specification
<b>Pass</b>	Yes

<b>Statement</b>	<p>The RGB Satellite Image Mosaics (and also IR mosaics) have been produced by e-GEOS through satellite analyses in the context of the Copernicus Global land Hot Spot Mapping (C-GL-HSM) framework.</p> <p>The Satellite Image Mosaics of each KLC are the cloud free composition result of a selection among the images set that have been produced for the automatic classification and for the visual refinement phases of the LC/LCC concerned vector layers. The Satellite Images used to compose the Mosaics have been priorly atmospherically corrected in order to perform the automatic classification, and are provided both in natural colour and infrared band combination version.</p> <p>These Satellite Image Mosaics can be considered as the geometrical reference for the features classes that are not influenced or subject to a seasonal variability.</p> <p>The Satellite Images used for the Mosaic composition are LANDSAT-7, LANDSAT-8, SPOT and SENTINEL-2.</p>
------------------	--

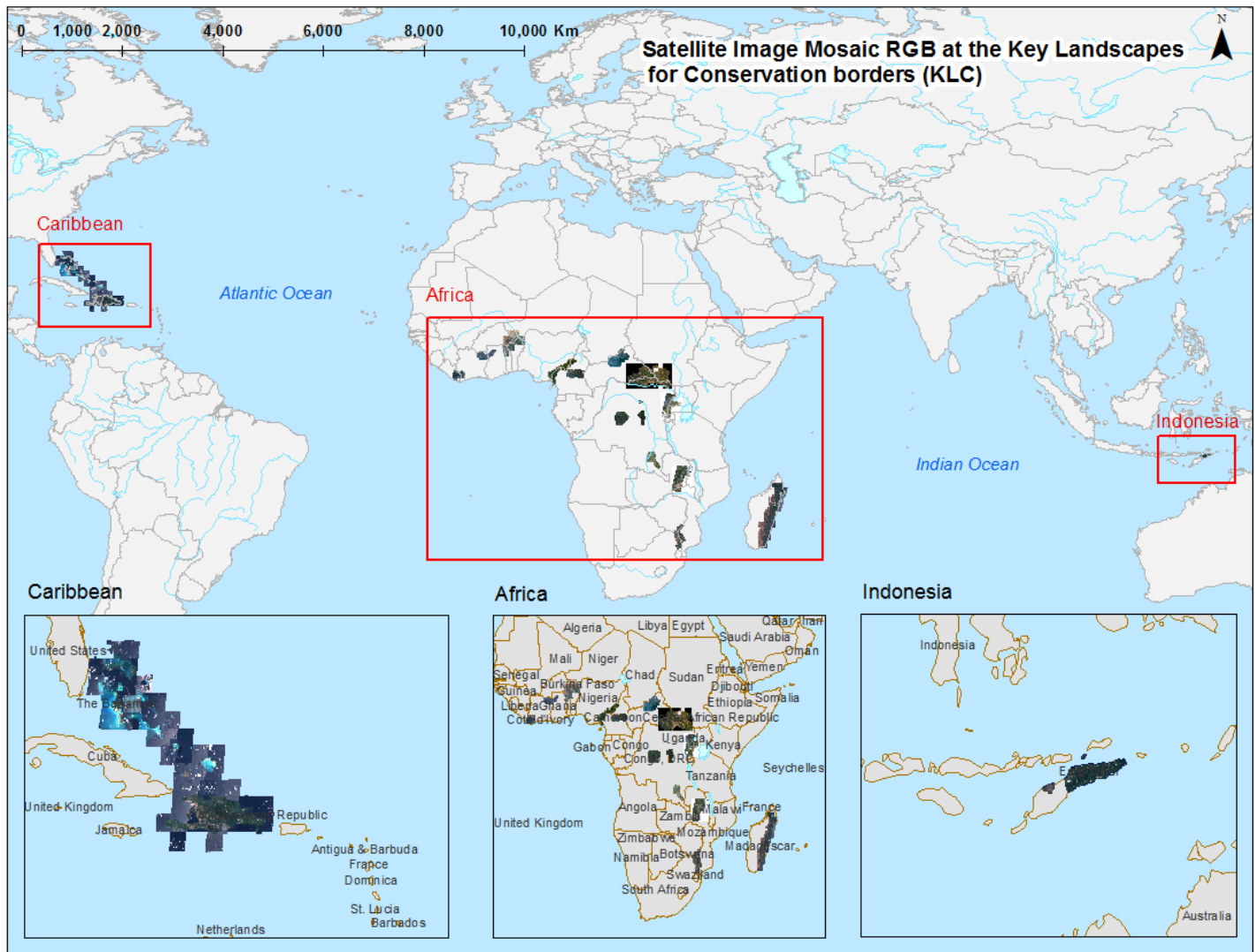
## Metadata

<b>File identifier</b>	8ff3d28c-4af9-4736-a2d1-01abd8c79d8c <a href="#">XML</a>
<b>Metadata language</b>	English
<b>Character set</b>	UTF8
<b>Hierarchy level</b>	Dataset
<b>Date stamp</b>	2024-07-22T09:25:01.542953Z
<b>Metadata standard name</b>	ISO 19115/19139
<b>Metadata standard version</b>	1.0

## Metadata author

No information provided.

## Overviews



Provided by

