

Grassland 2015 (raster 100 m), Europe, 3-yearly, Apr. 2018

The main high resolution grassland product is the Grassland layer, a grassland/non-grassland mask for the EEA39. This grassy and non-woody vegetation baseline product includes all kinds of grasslands: managed grassland, semi-natural grassland and natural grassy vegetation. It is a binary status layer for the 2015 reference year mapping grassland and all non-grassland areas in 20m and (aggregated) 100m pixel size and for the 2018 reference year - in 10m and (aggregated) 100m pixel size.

The production of the high resolution grassland layers was coordinated by the European Environment Agency (EEA) in the frame of the EU Copernicus programme.

Simple

Date (Creation)	2018-04-09				
Date (Publication)	2018-04-09				
Citation identifier	copernicus_r_3035_100_m_gra-2015_p_2014-2016_v01_r00				
Code	10.2909/b77b7ce3-04f8-44ae-aaae-b5e5af0f9682				
Point of contact	Organisation name	Individual name	Electronic mail address	Website	Role
	European Environment Agency		copernicus@eea.europa.eu	https://land.copernicus.eu	Distributor
	European Environment Agency		copernicus@eea.europa.eu	https://land.copernicus.eu	Custodian
	European Environment Agency		copernicus@eea.europa.eu	https://land.copernicus.eu/contact	Point of contact

Point of contact

No information provided.

Maintenance and update frequency	Continual
GEMET - INSPIRE themes, version 1.0	<ul style="list-style-type: none"> Land cover
Keywords	
Continents, countries, sea regions of the world.	<ul style="list-style-type: none"> EEA39
Keywords	
GEMET	<ul style="list-style-type: none"> grassland land cover landscape alteration land use forest management
Spatial scope	<ul style="list-style-type: none"> European
EEA topics	<ul style="list-style-type: none"> Land use
Access constraints	Other restrictions

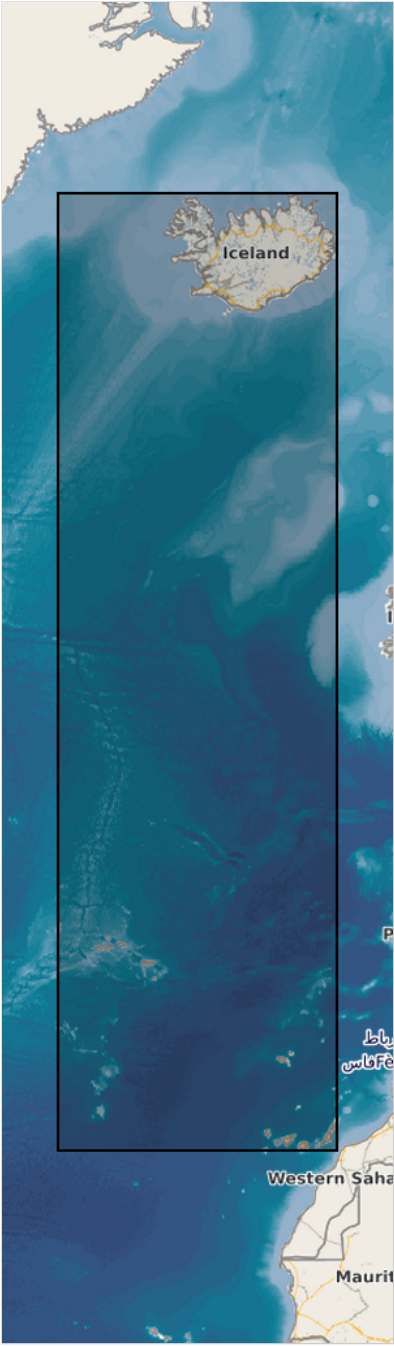
Other constraints	no limitations to public access
Use constraints	Other restrictions
Other constraints	<p>Access to data is based on a principle of full, open and free access as established by the Copernicus data and information policy Regulation (EU) No 1159/2013 of 12 July 2013. This regulation establishes registration and licensing conditions for GMES/Copernicus users.</p> <p>Free, full and open access to this data set is made on the conditions that:</p> <ol style="list-style-type: none"> 1. When distributing or communicating Copernicus dedicated data and Copernicus service information to the public, users shall inform the public of the source of that data and information. 2. Users shall make sure not to convey the impression to the public that the user's activities are officially endorsed by the Union. 3. Where that data or information has been adapted or modified, the user shall clearly state this. 4. The data remain the sole property of the European Union. Any information and data produced in the framework of the action shall be the sole property of the European Union. Any communication and publication by the beneficiary shall acknowledge that the data were produced "with funding by the European Union".
Spatial representation type	Grid
Distance	100 100 m
Language of dataset	English
Character set	UTF8
Topic category	<ul style="list-style-type: none"> • Environment • Imagery base maps earth cover
Begin date	2014-01-01
End date	2016-12-31

N

S

E

W



	N		S		E		W
--	---	--	---	--	---	--	---



Coordinate reference system identifier	EPSG:3035		
Distribution format	<ul style="list-style-type: none"> GeoTIFF (1.0) 		
OnLine resource	Protocol	Linkage	Name
	ESRI:REST	https://image.discomap.eea.europa.eu/arcgis/rest/services/GioLandPublic/HRL_Grassland_2015/MapServer	
	OGC:WMS	https://image.discomap.eea.europa.eu/arcgis/services/GioLandPublic/HRL_Grassland_2015/MapServer/WMServer?request=GetCapabilities&service=WMS	0
	WWW:LINK-1.0-http--link	https://land.copernicus.eu/en/products/high-resolution-layer-grassland/grassland-2015#Download	Download (requires authentication)

OnLine resource	Protocol	Linkage	Name
	DOI	https://doi.org/10.2909/b77b7ce3-04f8-44ae-aaae-b5e5af0f9682	

Hierarchy level	Dataset
------------------------	---------

Conformance result

Date (Publication)	2010-12-08
---------------------------	------------

Explanation	See the referenced specification
--------------------	----------------------------------

Statement	Thematic accuracy: The thematic accuracy assessment will be made on the primary layer, the grassland mask. The target will be set at 85 % to be achieved within each biogeographic region. A quantitative approach will be used based on a set of stratified random point samples compared to external datasets (e.g. GoogleEarth, national orthophotos or national grassland datasets). Achieved overall accuracy: 96.66%. Geometric accuracy (positioning accuracy): Less than half a pixel. According to ortho-rectified satellite image base delivered by ESA.
------------------	--------------------------------------------------------------------------------------------------------------------------------------------------------------------------------------------------------------------------------------------------------------------------------------------------------------------------------------------------------------------------------------------------------------------------------------------------------------------------------------------------------------------------------------------------------------------

Source	•
---------------	---

Metadata

File identifier	b77b7ce3-04f8-44ae-aaae-b5e5af0f9682 XML
------------------------	----------------------------------------------------------

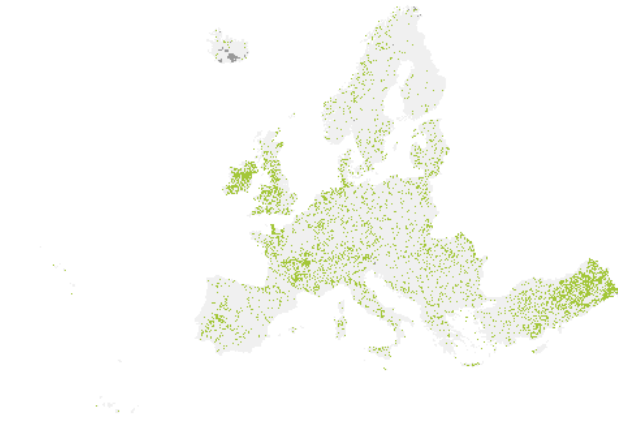
Metadata language	English
--------------------------	---------

Character set	UTF8
----------------------	------

Hierarchy level	Dataset
------------------------	---------

Date stamp	2024-02-06T16:46:44.327Z		
Metadata standard name	ISO 19115/19139		
Metadata standard version	1.0		
Metadata author	Organisation name	Individual name	Electronic mail address Website Role
	European Environment Agency		sdi@eea.europa.eu Point of contact

Overviews



Provided by

