

Urban Atlas Street Tree Layer 2012 (vector), Europe, 6-yearly, May 2016

The Urban Atlas provides pan-European comparable land use and land cover data for Functional Urban Areas (FUA). The Street Tree Layer (STL) is a separate layer from the Urban Atlas 2012 LU/LC layer produced within the level 1 urban mask for each FUA. It includes contiguous rows or patches of trees covering 500 m² or more and with a minimum width of 10 meter over "Artificial surfaces" (nomenclature class 1) inside FUA (i.e. rows of trees along the road network outside urban areas or forest adjacent to urban areas should not be included).

Urban Atlas is a joint initiative of the European Commission Directorate-General for Regional and Urban Policy and the Directorate-General for Enterprise and Industry in the frame of the EU Copernicus programme, with the support of the European Space Agency and the European Environment Agency.

Simple

Date (Creation)	2016-05-23			
Date (Publication)	2016-05-23			
Edition	01.00			
Citation identifier	copernicus_v_3035_10_m_ua-stl-2012_p_2011-2013_v01_r00			
Citation identifier	DAT-190-en			
Code	10.2909/d11f66eb-a6c5-4687-b32e-881d78ec879d			
Point of contact	Organisation name	Individual name	Electronic mail address	Website Role
	European Environment Agency		copernicus@eea.europa.eu	https://land.copernicus.eu Distributor
	European Environment Agency		copernicus@eea.europa.eu	https://land.copernicus.eu Custodian
	European Environment Agency		copernicus@eea.europa.eu	https://land.copernicus.eu Point of contact

Point of contact

No information provided.

Maintenance and update frequency	Continual
GEMET - INSPIRE themes, version 1.0	<ul style="list-style-type: none"> Land use
Keywords	
Continents, countries, sea regions of the world.	<ul style="list-style-type: none"> EEA39
Keywords	
GEMET	<ul style="list-style-type: none"> land cover land use landscape alteration urban area
Spatial scope	<ul style="list-style-type: none"> European

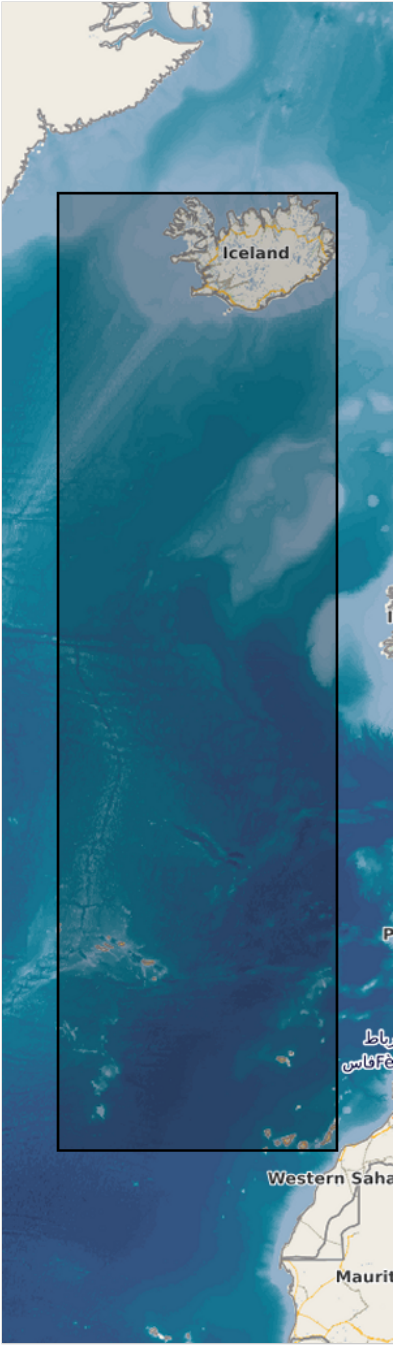
EEA Management Plan	<ul style="list-style-type: none"> • 2018 3.6.2
EEA topics	<ul style="list-style-type: none"> • Buildings and construction • Environmental health impacts • Urban sustainability • Land use
Access constraints	Other restrictions
Other constraints	no limitations to public access
Use constraints	Other restrictions
Other constraints	<p>Access to data is based on a principle of full, open and free access as established by the Copernicus data and information policy Regulation (EU) No 1159/2013 of 12 July 2013. This regulation establishes registration and licensing conditions for GMES/Copernicus users.</p> <p>Free, full and open access to this data set is made on the conditions that:</p> <ol style="list-style-type: none"> 1. When distributing or communicating Copernicus dedicated data and Copernicus service information to the public, users shall inform the public of the source of that data and information. 2. Users shall make sure not to convey the impression to the public that the user's activities are officially endorsed by the Union. 3. Where that data or information has been adapted or modified, the user shall clearly state this. 4. The data remain the sole property of the European Union. Any information and data produced in the framework of the action shall be the sole property of the European Union. Any communication and publication by the beneficiary shall acknowledge that the data were produced "with funding by the European Union".
Aggregate Datasetidentifier	13565c71-f48b-49eb-a96f-7db32a6c7f47
Association Type	Cross reference
Spatial representation type	Vector
Distance	10 10 m
Language of dataset	English
Character set	UTF8
Topic category	<ul style="list-style-type: none"> • Environment • Imagery base maps earth cover
Begin date	2011-01-01
End date	2013-12-31

N

S

E

W





Additional Information	Spatial Resolution information: The Minimum Mapping Width is 10 m		
Coordinate reference system identifier	EPSG:3035		
Distribution format	<ul style="list-style-type: none"> • SHP (1.1) 		
OnLine resource	Protocol	Linkage	Name
	ESRI:REST	https://image.discomap.eea.europa.eu/arcgis/rest/services/UrbanAtlas/STL/MapServer	
	OGC:WMS	https://image.discomap.eea.europa.eu/arcgis/services/UrbanAtlas/STL/MapServer/WMServer?service=WMS&request=GetCapabilities&version=1.3.0	STL Vector
	WWW:LINK-1.0-http--link	https://land.copernicus.eu/en/products/urban-atlas/street-tree-layer-stl-2012#Download	Download (requires authentication)
OnLine resource	Protocol	Linkage	Name
	DOI	https://doi.org/10.2909/d11f66eb-a6c5-4687-b32e-881d78ec879d	
Hierarchy level	Dataset		

Conformance result

Date (Publication)	2010-12-08
Explanation	See the referenced specification

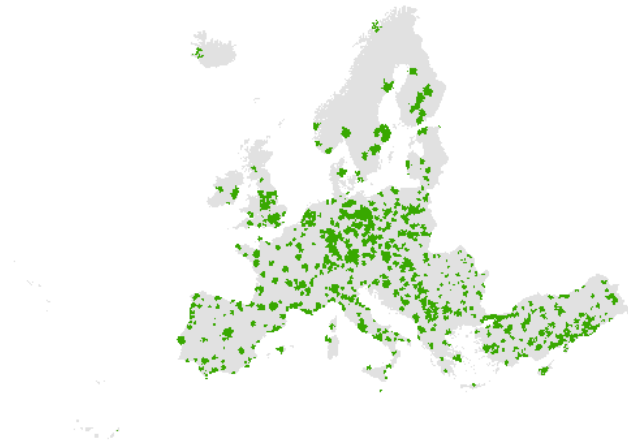
Statement	<p>The STL is a separate layer from the Urban Atlas 2012 LC/LU layer produced within the Urban Atlas 2012 LC/LU urban mask for each FUUA. The production of the Street Tree Layers was performed on the basis of SPOT 5 Supermode data used for the Urban Atlas 2012 production acquired between March and November months with a preference for spring and late summer imagery. An interactive automated classification approach was applied to identify contiguous rows or a patches of trees covering 500 m² or more and with a minimum width of 10 m. A post-processing routine was applied to provide the results in vector format.</p> <p>The Minimum Mapping Unit is 0.5 ha. The Minimum Mapping Width is 10 m.</p>
------------------	---

Metadata

File identifier	d11f66eb-a6c5-4687-b32e-881d78ec879d XML
Metadata language	English
Character set	UTF8

Hierarchy level	Dataset		
Date stamp	2024-02-06T16:47:18.916Z		
Metadata standard name	ISO 19115/19139		
Metadata standard version	1.0		
Metadata author	Organisation name	Individual name	Electronic mail address Website Role
	European Environment Agency		sdi@eea.europa.eu Point of contact

Overviews



Provided by

