

Urban Atlas Land Cover/Land Use 2018 (vector), Europe, 6-yearly, Jul. 2021

Urban Atlas 2018 provides reliable, inter-comparable, high-resolution land use and land cover data with integrated population estimates for 788 Functional Urban Areas (FUA) with more than 50,000 inhabitants for the 2018 reference year in EEA38 countries (EU, EFTA, Western Balkans countries, as well as Türkiye) and the United Kingdom.

Urban Atlas is a joint initiative of the European Commission Directorate-General for Regional and Urban Policy and the Directorate-General for Defence Industry and Space in the frame of the EU Copernicus programme, with the support of the European Space Agency and the European Environment Agency.

Per each of the FUAs, a ZIP is provided which includes: (1) the vector data in OGC GeoPackage SQLite format (ETRS89-LAEA, EPSG:3035); (2) PDF document with a high-resolution map of the area; (3) PDF document with the delivery report; (4) symbology files in .lyr, .qml and .sld formats; and (5) a xml document with metadata.

Simple

Date (Creation)	2020-04-16		
Date (Publication)	2020-04-16		
Date (Revision)	2021-07-16		
Edition	01.03		
Citation identifier	copernicus_v_3035_10_m_ua-2018_p_2017-2019_v01_r03		
Citation identifier	DAT-190-en		
Code	10.2909/fb4dffa1-6ceb-4cc0-8372-1ed354c285e6		
Point of contact	Organisation name	Individual name	Electronic mail address Role
	European Environment Agency		copernicus@eea.europa.eu Distributor
	European Environment Agency		copernicus@eea.europa.eu Custodian
	European Environment Agency		copernicus@eea.europa.eu Point of contact

Point of contact

No information provided.

Maintenance and update frequency	Continual
GEMET - INSPIRE themes, version 1.0	<ul style="list-style-type: none"> Land use
Keywords	

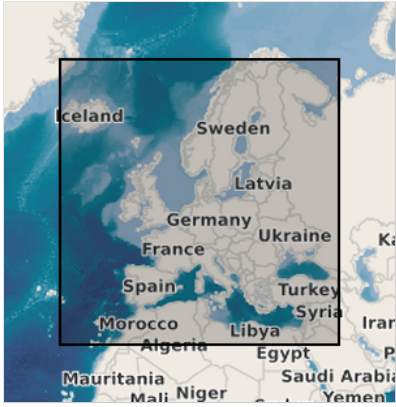
Continents, countries, sea regions of the world.	<ul style="list-style-type: none"> • EEA38 (from 2020) • United Kingdom
Keywords	
GEMET	<ul style="list-style-type: none"> • land • land use • landscape alteration • land cover • urban area
Spatial scope	<ul style="list-style-type: none"> • European
EEA topics	<ul style="list-style-type: none"> • Land use
EEA Management Plan	<ul style="list-style-type: none"> • 2018 3.6.2
Access constraints	Other restrictions
Other constraints	no limitations to public access
Use constraints	Other restrictions
Other constraints	<p>Access to data is based on a principle of full, open and free access as established by the Copernicus data and information policy Regulation (EU) No 1159/2013 of 12 July 2013. This regulation establishes registration and licensing conditions for GMES/Copernicus users.</p> <p>Free, full and open access to this data set is made on the conditions that:</p> <ol style="list-style-type: none"> 1. When distributing or communicating Copernicus dedicated data and Copernicus service information to the public, users shall inform the public of the source of that data and information. 2. Users shall make sure not to convey the impression to the public that the user's activities are officially endorsed by the Union. 3. Where that data or information has been adapted or modified, the user shall clearly state this. 4. The data remain the sole property of the European Union. Any information and data produced in the framework of the action shall be the sole property of the European Union. Any communication and publication by the beneficiary shall acknowledge that the data were produced "with funding by the European Union".
Aggregate DatasetIdentifier	c82fc17a-a100-4cc8-b1a8-9d3566f57581
Association Type	revision of
Spatial representation type	Vector
Distance	10 m
Language of dataset	English
Character set	UTF8
Topic category	<ul style="list-style-type: none"> • Environment • Imagery base maps earth cover
Begin date	2017-01-01
End date	2019-12-31

N

S

E

W



N

S

E

W





Additional Information	Spatial Resolution information: The Minimum Mapping Width is 10 m		
CRS identifier	EPSG:3035		
CRS identifier	EPSG:32740		
CRS identifier	EPSG:32620		
Distribution format	<ul style="list-style-type: none"> • Geopackage (1.1) 		
OnLine resource	Protocol	Linkage	Name
	ESRI:REST	https://image.discomap.eea.europa.eu/arcgis/rest/services/UrbanAtlas/UA_UrbanAtlas_2018/MapServer	
	OGC:WMS	https://image.discomap.eea.europa.eu/arcgis/services/UrbanAtlas/UA_UrbanAtlas_2018/MapServer/WMServer?service=WMS&request=GetCapabilities&version=1.3.0	
	WWW:LINK-1.0-http--link	https://land.copernicus.eu/en/products/urban-atlas/urban-atlas-2018/#Download	Download (requires authentication)
OnLine resource	Protocol	Linkage	Name
	DOI	https://doi.org/10.2909/fb4dffa1-6ceb-4cc0-8372-1ed354c285e6	
Hierarchy level	Dataset		

Conformance result

Date (Publication)	2010-12-08
Explanation	See the referenced specification

Statement	<p>Version v013 marks the Functional Urban Areas (FUA) where population estimates for reference year 2018 has been added to each polygon in the attribute table as Pop2018. Two FUAs (FR030L1 - Fort De France, FR028L1 - Saint Denis) are still in version v012 since no population estimates are available.</p> <p>Cartography based on satellite images Interpretation (Pléiades, KOMPSAT, Planet, SPOT6, SuperView, etc. - resolution 2 or 4 meters)</p> <p>Use of ancillary data (Google Earth, OpenStreet Map).</p> <p>Production land use/cover maps for Functional Urban Area in Europe.</p> <p>Typology:</p>
------------------	---

11100 Continuous Urban Fabric (S.L. > 80%)

11210 Discontinuous Dense Urban Fabric (S.L. : 50% - 80%)

11220 Discontinuous Medium Density Urban Fabric (S.L. : 30% - 50%)

11230 Discontinuous Low Density Urban Fabric (S.L. : 10% - 30%)

11240 Discontinuous Very Low Density Urban Fabric (S.L. < 10%)

11300 Isolated Structures

12100 Industrial, commercial, public, military and private units

12210 Fast transit roads and associated land

12220 Other roads and associated land

12230 Railways and associated land

12300 Port areas

12400 Airports

13100 Mineral extraction and dump sites

13300 Construction sites

13400 Land without current use

14100 Green urban areas

14200 Sports and leisure facilities

21000 Arable land (annual crops)

22000 Permanent crops (vineyards, fruit trees, olive groves)

23000 Pastures

24000 Complex and mixed cultivation patterns

25000 Orchards at the fringe of urban classes

31000 Forests

32000 Herbaceous vegetation associations (natural grassland, moors...)

33000 Open spaces with little or no vegetations (beaches, dunes, bare rocks, glaciers)

40000 Wetland

50000 Water bodies

External Quality control realized by IGNFI.

Class 1: 0.25 ha

Class 2 - 5: 1 ha.

The Minimum Mapping Width is 10 m.

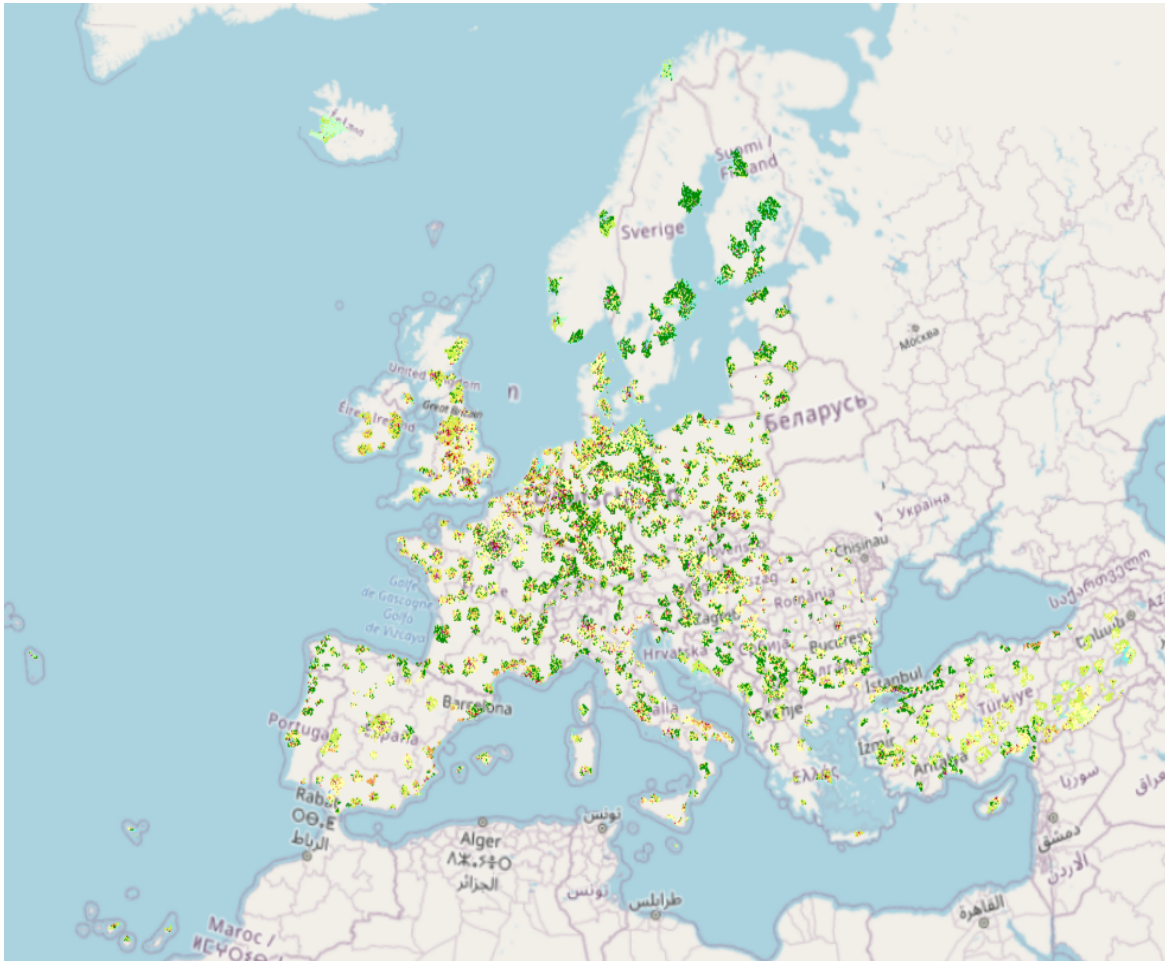
More information about the products can be found here: <https://land.copernicus.eu/local/urban-atlas/urban-atlas-2018/resolveuid/2174a220717c46a28865143c0592e790>.

Metadata

File identifier	fb4dffa1-6ceb-4cc0-8372-1ed354c285e6 XML
Metadata language	English
Character set	UTF8
Hierarchy level	Dataset
Date stamp	2023-08-15T14:59:28.358Z
Metadata standard name	ISO 19115/19139

Metadata standard version	1.0		
Metadata author	<p>Organisation name</p> <p>European Environment Agency</p>	<p>Individual name</p>	<p>Electronic mail address</p> <p>sdi@eea.europa.eu</p> <p>Role</p> <p>Point of contact</p>

Overviews



Provided by

