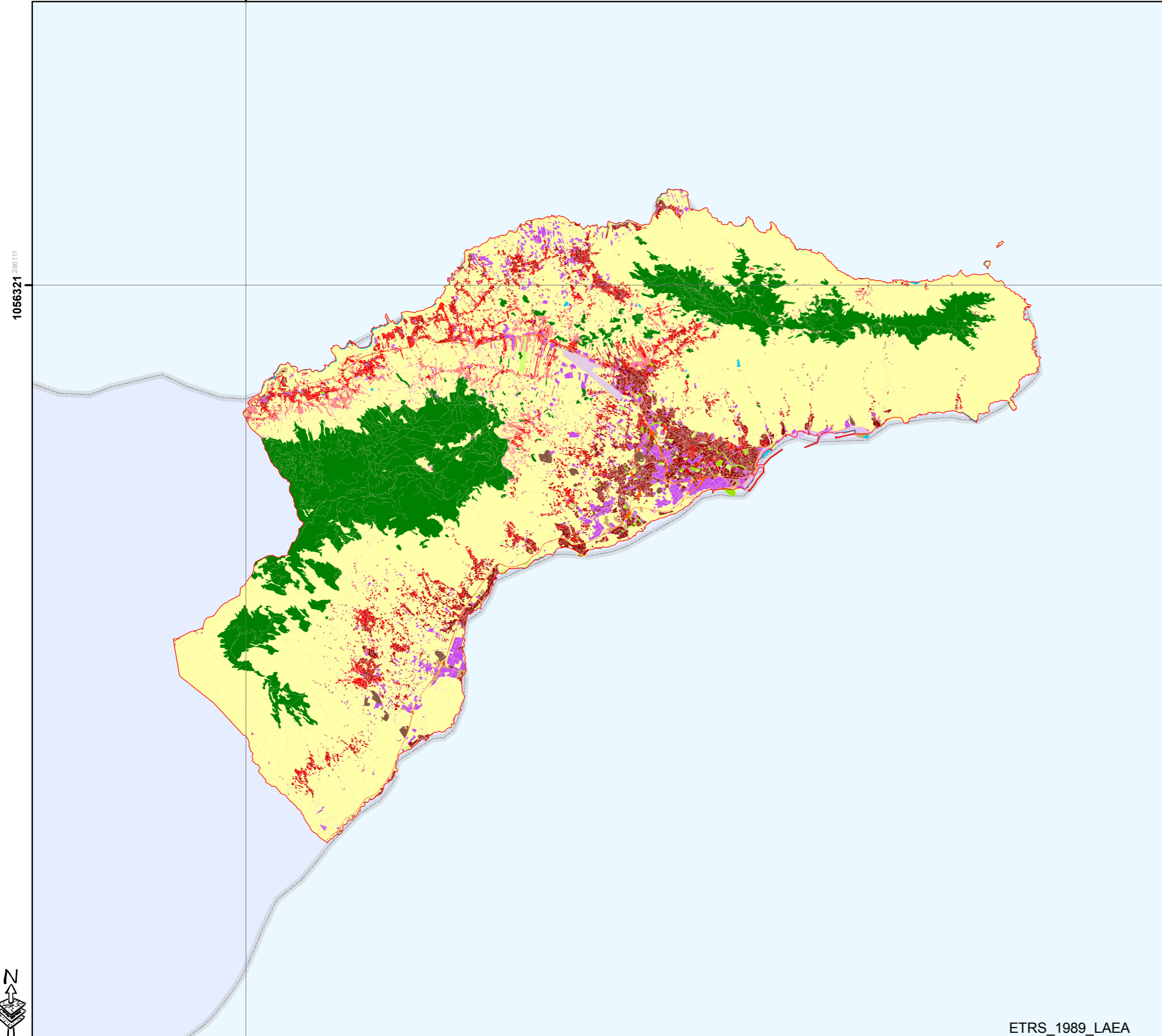
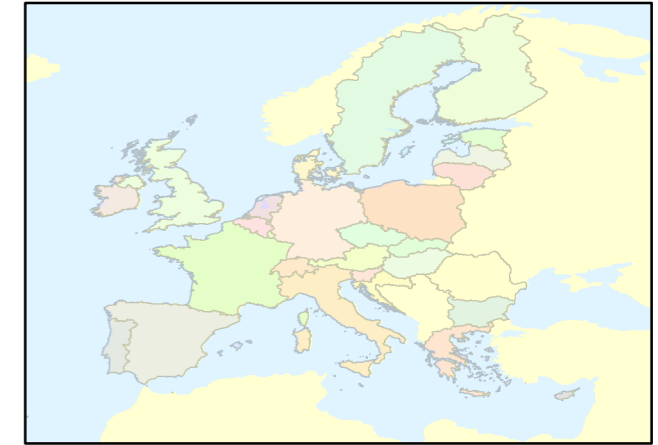


URBAN ATLAS - ES025L-Santa Cruz de Tenerife

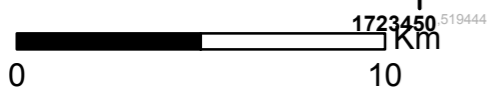
1723450,519444



Legend

| | |
|--|--|
| | 11100: Continuous Urban fabric (S.L. > 80%) |
| | 11210: Discontinuous Dense Urban Fabric (S.L.: 50% - 80%) |
| | 11220: Discontinuous Medium Density Urban Fabric (S.L.: 30% - 50%) |
| | 11230: Discontinuous Low Density Urban Fabric (S.L.: 10% - 30%) |
| | 11240: Discontinuous very low density urban fabric (S.L. < 10%) |
| | 11300: Isolated Structures |
| | 12100: Industrial, commercial, public, military and private units |
| | 12210: Fast transit roads and associated land |
| | 12220: Other roads and associated land |
| | 12230: Railways and associated land |
| | 12300: Port areas |
| | 12400: Airports |
| | 13100: Mineral extraction and dump sites |
| | 13300: Construction sites |
| | 13400: Land without current use |
| | 14100: Green urban areas |
| | 14200: Sports and leisure facilities |
| | 20000: Agricultural, semi-natural and wetland areas |
| | 30000: Forest |
| | 50000: Water |

févr 19, 2010



ETRS_1989_LAEA

