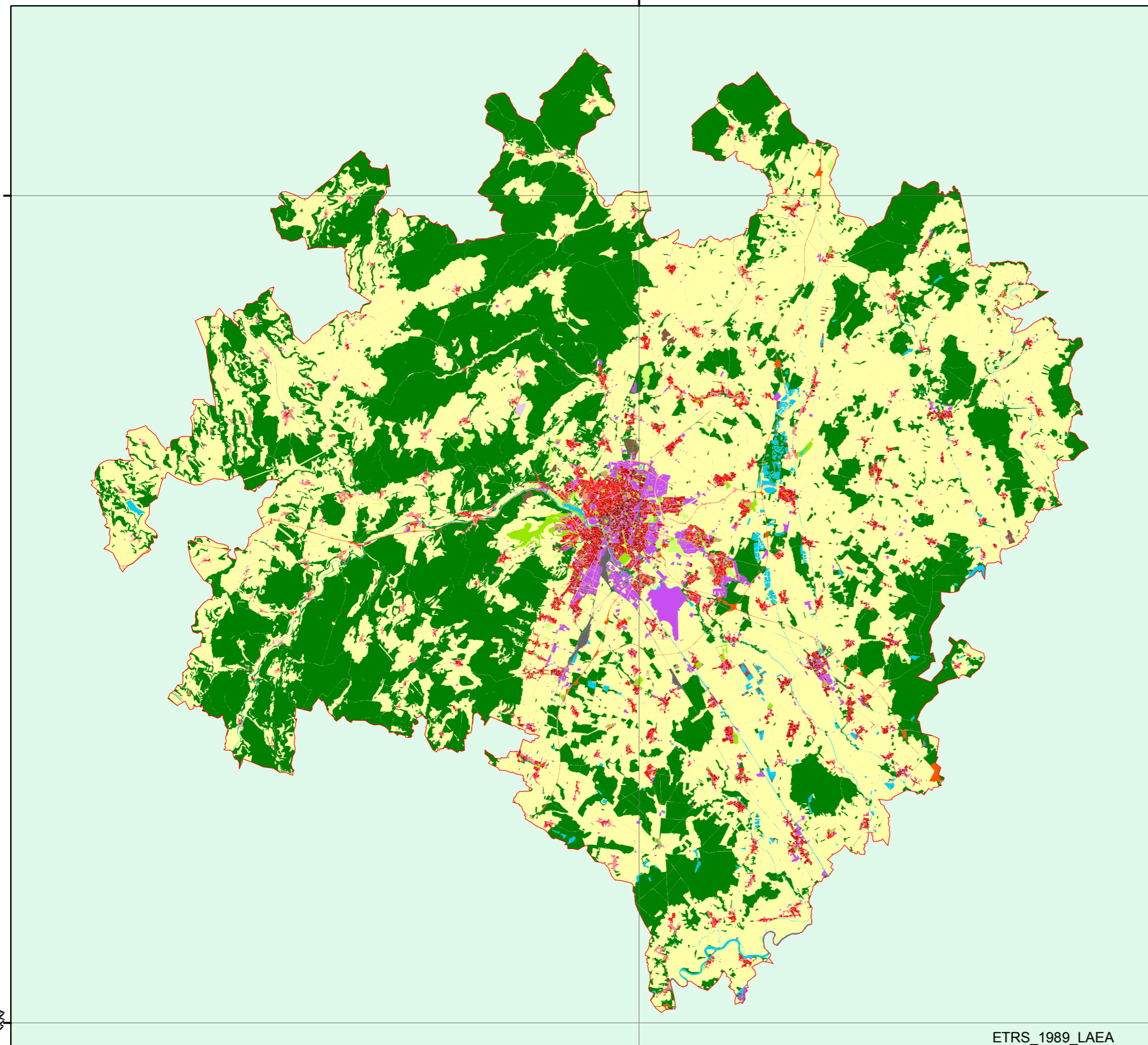


URBAN ATLAS - FR020L-Dijon

3947347.963889

2724244.969444

2724244.969444



Legend

	11100: Continuous Urban fabric (S.L. > 80%)
	11210: Discontinuous Dense Urban Fabric (S.L.: 50% - 80%)
	11220: Discontinuous Medium Density Urban Fabric (S.L.: 30% - 50%)
	11230: Discontinuous Low Density Urban Fabric (S.L.: 10% - 30%)
	11240: Discontinuous very low density urban fabric (S.L. < 10%)
	11300: Isolated Structures
	12100: Industrial, commercial, public, military and private units
	12210: Fast transit roads and associated land
	12220: Other roads and associated land
	12230: Railways and associated land
	12300: Port areas
	12400: Airports
	13100: Mineral extraction and dump sites
	13300: Construction sites
	13400: Land without current use
	14100: Green urban areas
	14200: Sports and leisure facilities
	20000: Agricultural, semi-natural and wetland areas
	30000: Forest
	50000: Water

juin 10, 2010



3947347.963889

ETRS_1989_LAEA

2668646.963333

