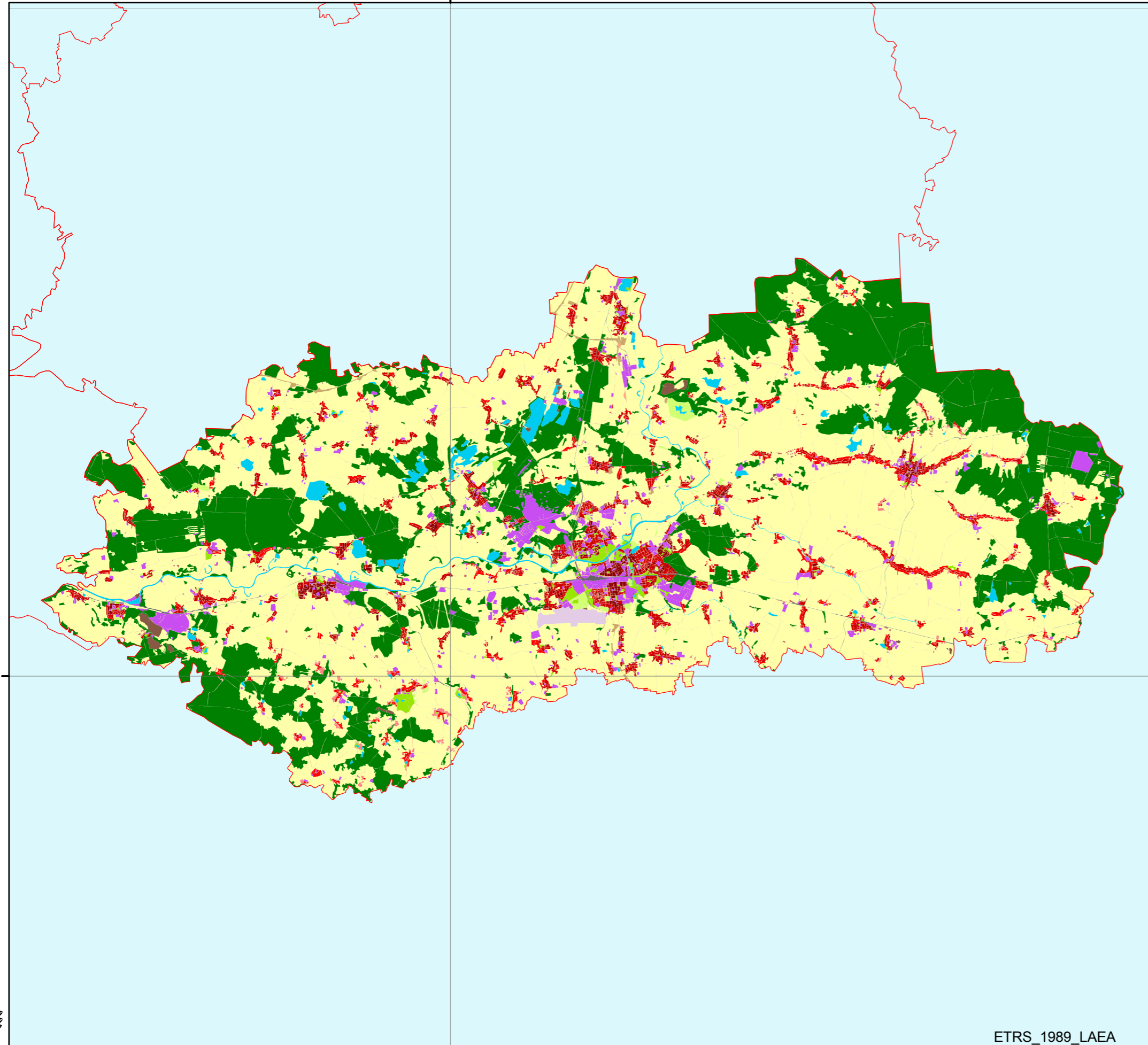


URBAN ATLAS - CZ010L-Pardubice

4725712 069444



Legend

- 11100: Continuous Urban fabric (S.L. > 80%)
- 11210: Discontinuous Dense Urban Fabric (S.L.: 50% - 80%)
- 11220: Discontinuous Medium Density Urban Fabric (S.L.: 30% - 50%)
- 11230: Discontinuous Low Density Urban Fabric (S.L.: 10% - 30%)
- 11240: Discontinuous very low density urban fabric (S.L. < 10%)
- 11300: Isolated Structures
- 12100: Industrial, commercial, public, military and private units
- 12210: Fast transit roads and associated land
- 12220: Other roads and associated land
- 12230: Railways and associated land
- 12300: Port areas
- 12400: Airports
- 13100: Mineral extraction and dump sites
- 13300: Construction sites
- 13400: Land without current use
- 14100: Green urban areas
- 14200: Sports and leisure facilities
- 20000: Agricultural, semi-natural and wetland areas
- 30000: Forest
- 50000: Water

févr 19, 2010



0 10 Km

4725712 069444

ETRS_1989_LAEA

