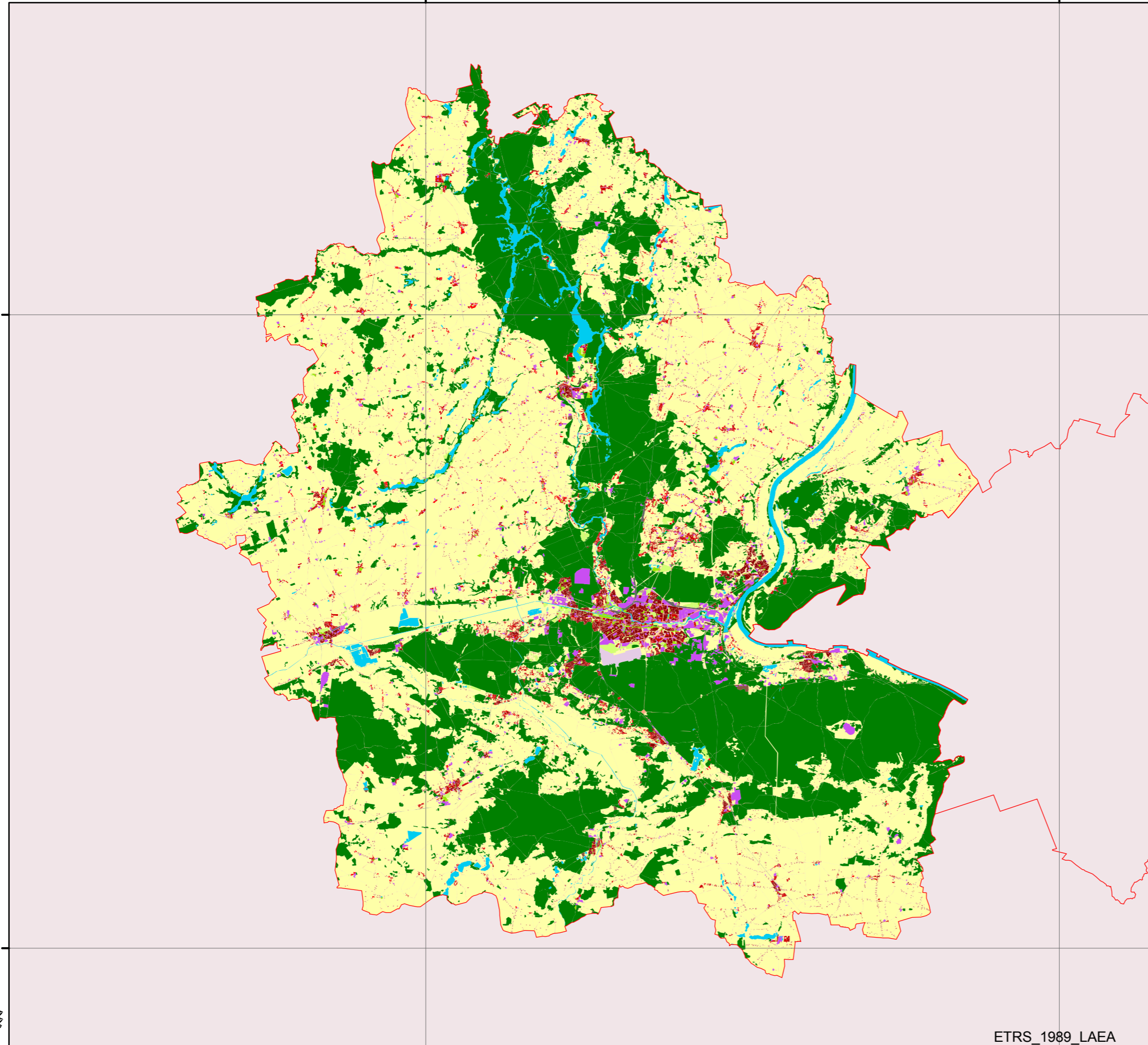
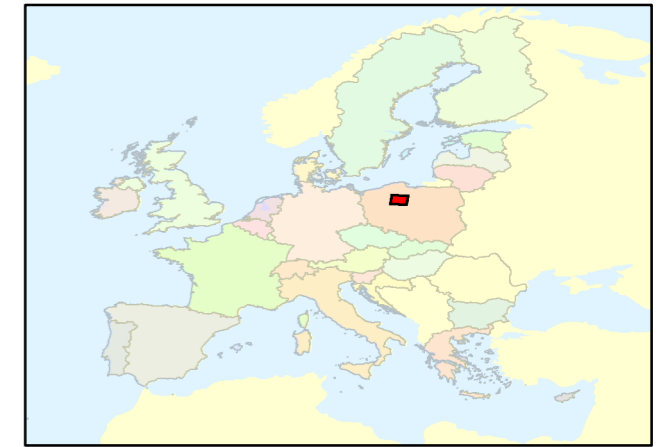


# URBAN ATLAS - PL008L-Bydgoszcz

4836906<sup>941667</sup>

4892504<sup>377778</sup>



3391413<sup>602778</sup>

3391413<sup>602778</sup>

3335816<sup>16667</sup>

3335816<sup>16667</sup>

### Legend

	11100: Continuous Urban fabric (S.L. > 80%)
	11210: Discontinuous Dense Urban Fabric (S.L.: 50% - 80%)
	11220: Discontinuous Medium Density Urban Fabric (S.L.: 30% - 50%)
	11230: Discontinuous Low Density Urban Fabric (S.L.: 10% - 30%)
	11240: Discontinuous very low density urban fabric (S.L. < 10%)
	11300: Isolated Structures
	12100: Industrial, commercial, public, military and private units
	12210: Fast transit roads and associated land
	12220: Other roads and associated land
	12230: Railways and associated land
	12300: Port areas
	12400: Airports
	13100: Mineral extraction and dump sites
	13300: Construction sites
	13400: Land without current use
	14100: Green urban areas
	14200: Sports and leisure facilities
	20000: Agricultural, semi-natural and wetland areas
	30000: Forest
	50000: Water

avr 26, 2010

ETRS\_1989\_LAEA

4836906<sup>941667</sup>

4892504<sup>377778</sup>

