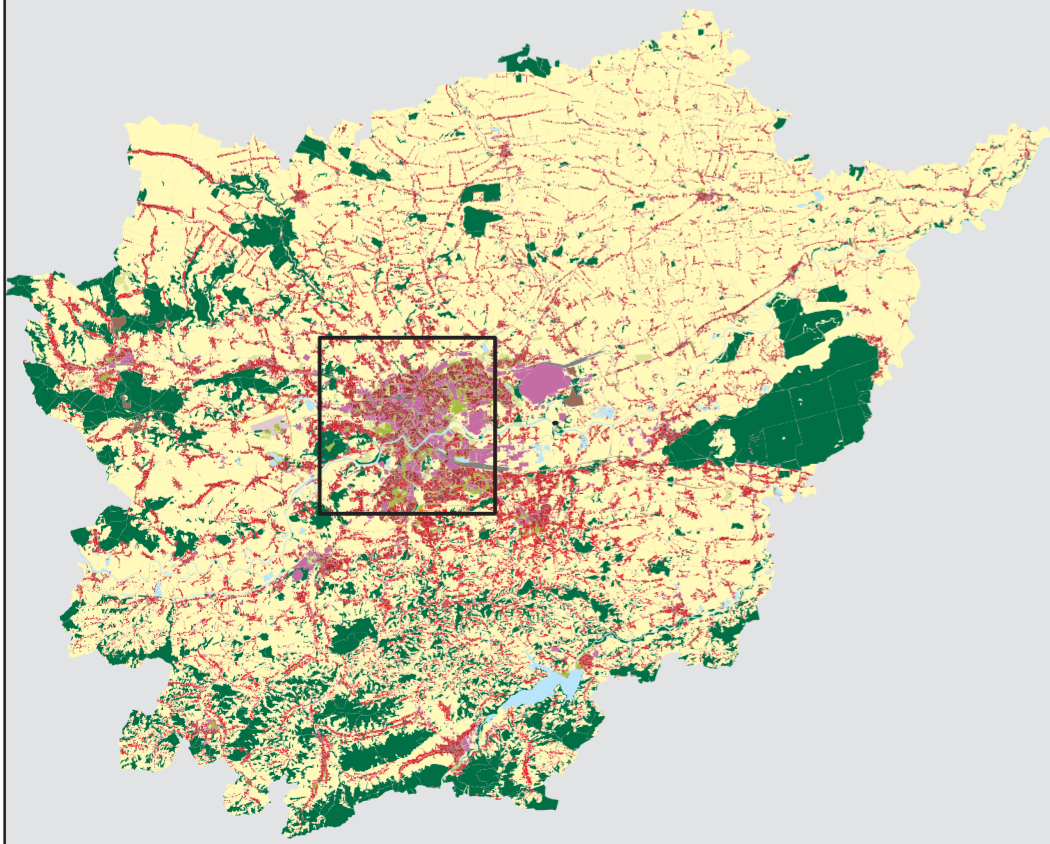


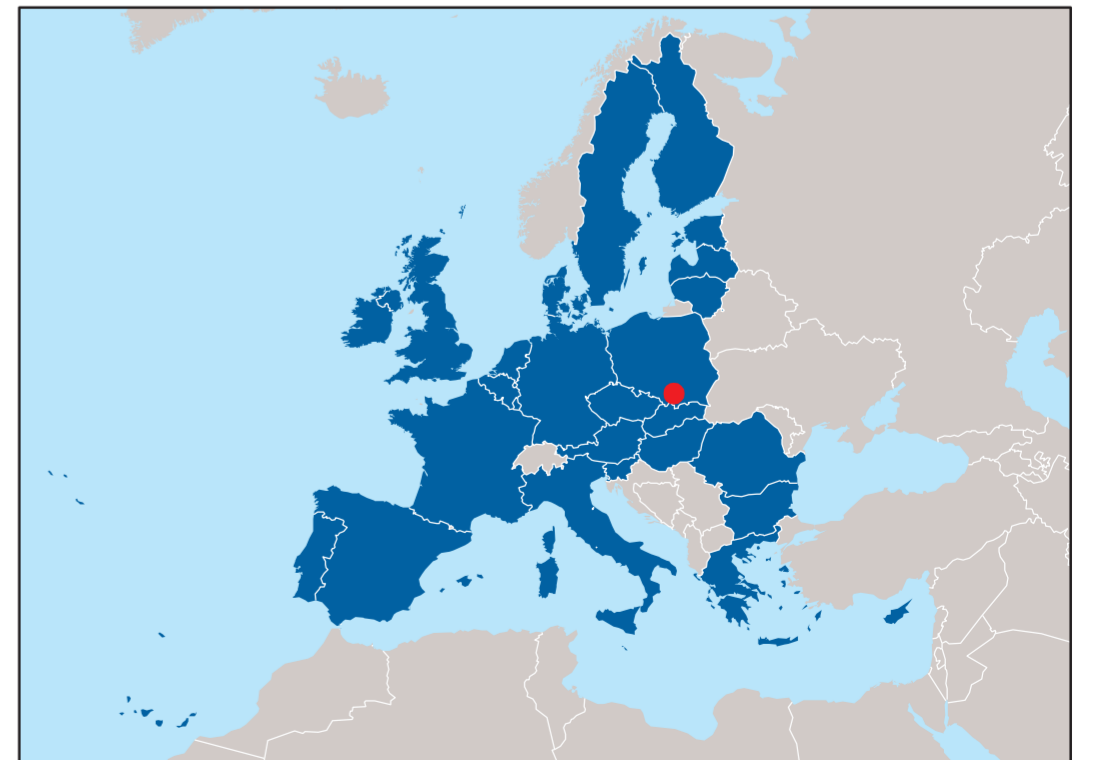
Kraków



Larger Urban Zone: Kraków



- Continuous Urban fabric (S.L. > 80%)
- Discontinuous Dense Urban Fabric (S.L.: 50% - 80%)
- Discontinuous Medium Density Urban Fabric (S.L.: 30% - 50%)
- Discontinuous Low Density Urban Fabric (S.L.: 10% - 30%)
- Discontinuous Very Low Density Urban Fabric (S.L. < 10%)
- Isolated Structures
- Industrial, commercial, public, military and private units
- Fast transit roads and associated land
- Other roads and associated land
- Railways and associated land
- Port areas
- Airports
- Mineral extraction and dump sites
- Construction sites
- Land without current use
- Green urban areas
- Sports and leisure facilities
- Agricultural Areas, semi-natural areas and wetlands
- Forests
- Water
- No data



REGIOgis

Gmes
Observing our planet for a safer world