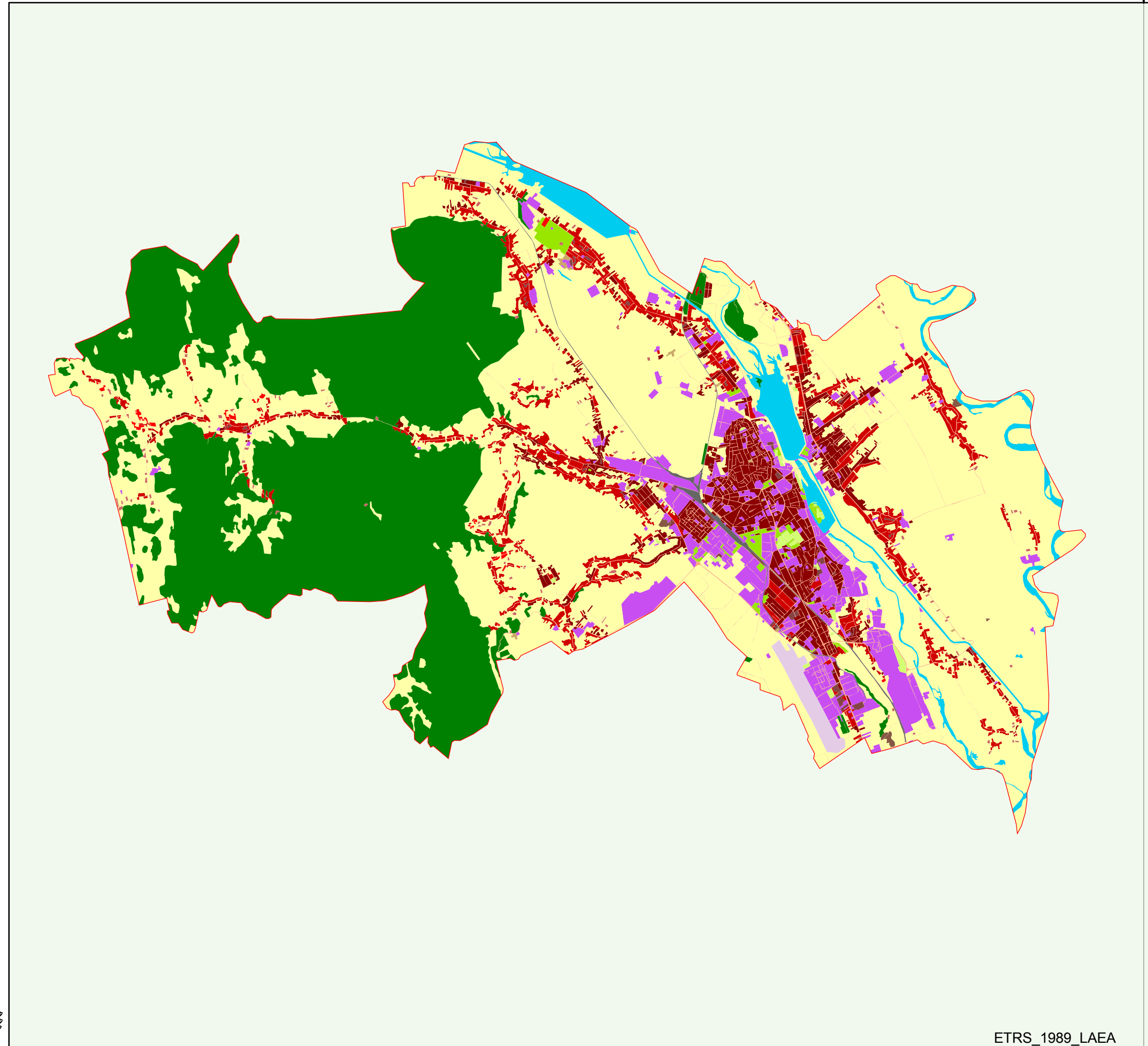


# URBAN ATLAS - RO007L-Bacau

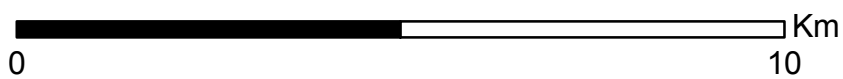
5615271 047222



### Legend

11100: Continuous Urban fabric (S.L. > 80%)
11210: Discontinuous Dense Urban Fabric (S.L.: 50% - 80%)
11220: Discontinuous Medium Density Urban Fabric (S.L.: 30% - 50%)
11230: Discontinuous Low Density Urban Fabric (S.L.: 10% - 30%)
11240: Discontinuous very low density urban fabric (S.L. < 10%)
11300: Isolated Structures
12100: Industrial, commercial, public, military and private units
12210: Fast transit roads and associated land
12220: Other roads and associated land
12230: Railways and associated land
12300: Port areas
12400: Airports
13100: Mineral extraction and dump sites
13300: Construction sites
13400: Land without current use
14100: Green urban areas
14200: Sports and leisure facilities
20000: Agricultural, semi-natural and wetland areas
30000: Forest
50000: Water

févr 19, 2010



ETRS\_1989\_LAEA

5615271 047222

